

Today's Meeting Schedule

1:00 to 2:00 – Open House

2:00-2:15 – Presentation

2:15-3:00 – Q&A

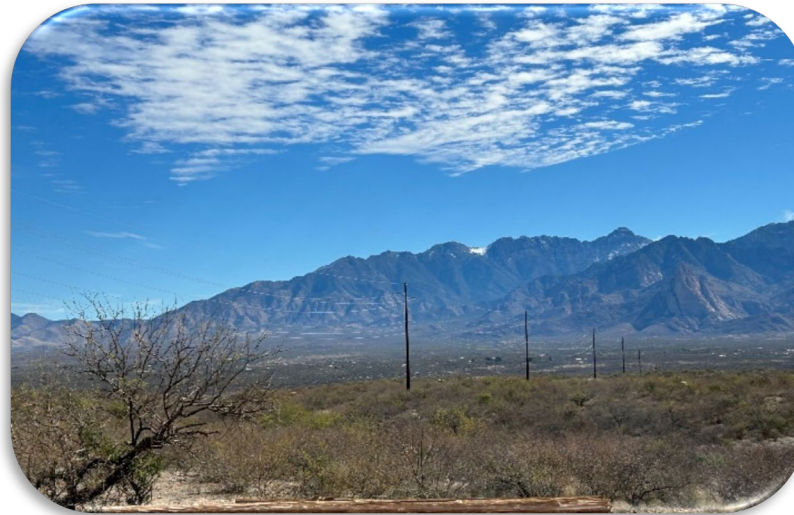
If you would like to ask a question to be answered during the Q&A, please write your question on a comment card and provide to a UNSE team member.

If you have a comment that you would like to be recorded verbatim for the project record, please fill out a comment form.

Santa Cruz Reliability Project South

PUBLIC OPEN HOUSE

TUBAC COMMUNITY CENTER, MAY 13, 2025, 1-3 P.M.



May 2025

Agenda

- Project History, Need and Benefits
- Santa Cruz Reliability Project – Three Phases
- How Power Gets to You
- What is Siting?
- Route Development & Evaluation
- Planning Process
- Project Study Area, Opportunities and Constraints
- Project Schedule
- Public Participation
- Q&A Session

History

- 1998, the City of Nogales filed a complaint with the Arizona Corporation Commission against Citizens Utilities Company (Citizens) concerning electrical outages in Santa Cruz County.
- Settlement Agreement required the development of a second transmission line to service the area.
- 2001, Citizens and TEP filed a joint application to construct a second transmission line to Nogales.
- 2003, UNS Energy acquired *Citizens* to provide electric service in the former Citizens' service territories, including Santa Cruz County.
- Between 2003 – 2013 UNSE made substantial improvements to operating procedures and significant investments in facilities improving reliability and reducing outage restoration time.
- 2012, UNSE reevaluated the need for a second transmission line and determined that it was not necessary to provide safe, reliable service to customers in Santa Cruz County.

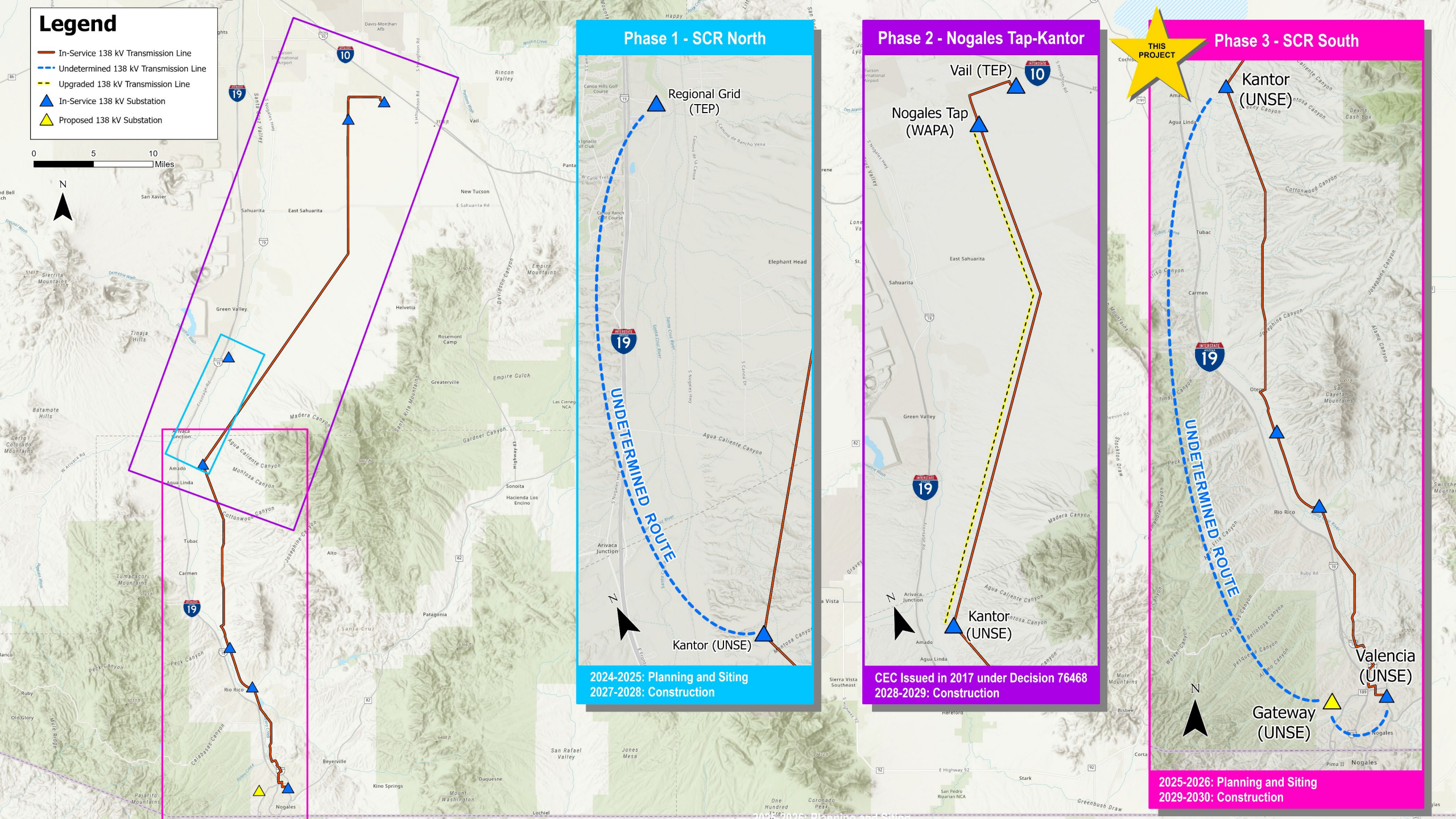
Need and Benefits

- Reduce the potential for a major and sustained outage in Santa Cruz County.
- Support maintenance and other upgrades, allowing work to be performed without interrupting system operations.
- Improve the reliability and resiliency of the electrical transmission system serving Santa Cruz County.
- Maintain and strengthen reliability for Santa Cruz County and its residents, businesses and industries, including hospitals, schools, ports of entry and federal facilities.
- Meet current and future energy needs without impacting service to existing customers.

Legend

- In-Service 138 kV Transmission Line
- Undetermined 138 kV Transmission Line
- Upgraded 138 kV Transmission Line
- In-Service 138 kV Substation
- Proposed 138 kV Substation

0 5 10 Miles



Phase 1 - SCR North

Regional Grid (TEP)

UNDETERMINED ROUTE

Kantor (UNSE)

2024-2025: Planning and Siting
2027-2028: Construction

Phase 2 - Nogales Tap-Kantor

Nogales Tap (WAPA)

Vail (TEP)

Kantor (UNSE)

CEC Issued in 2017 under Decision 76468
2028-2029: Construction

Phase 3 - SCR South

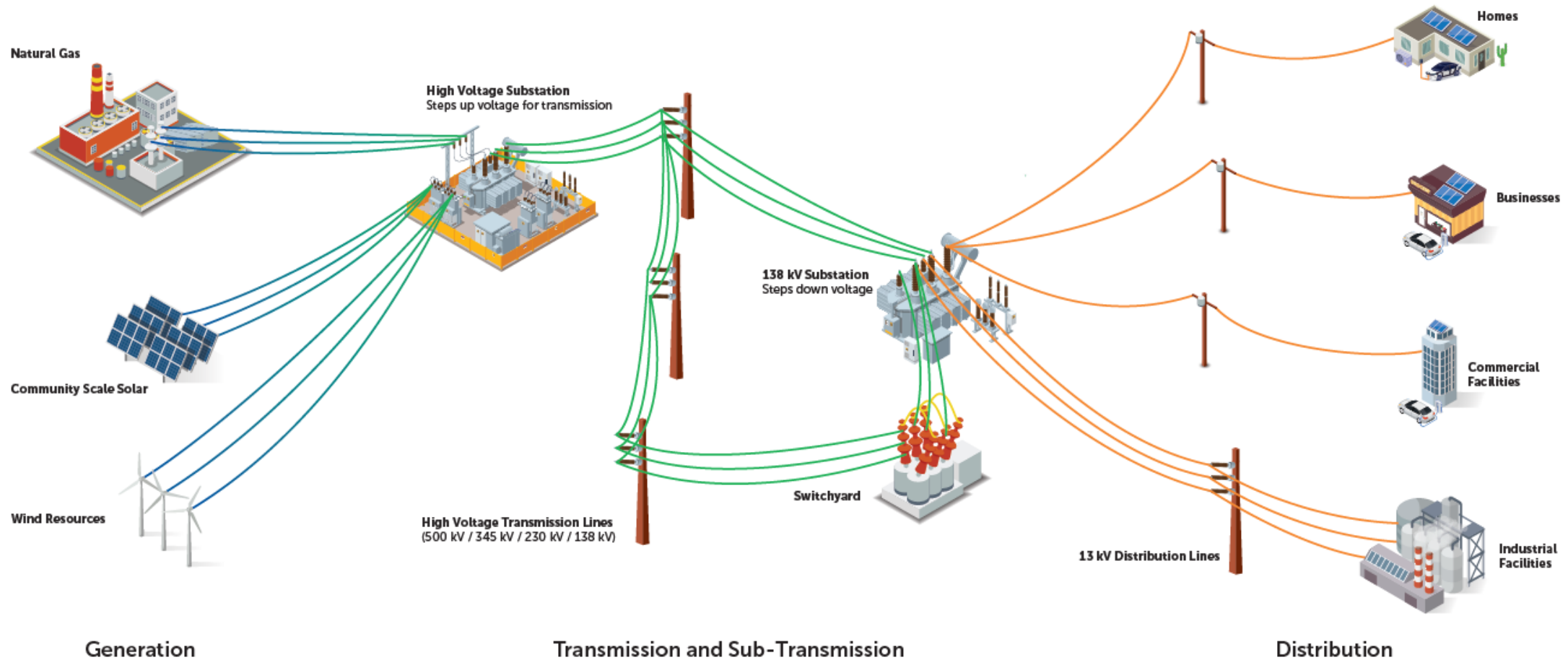
Kantor (UNSE)

Gateway (UNSE)

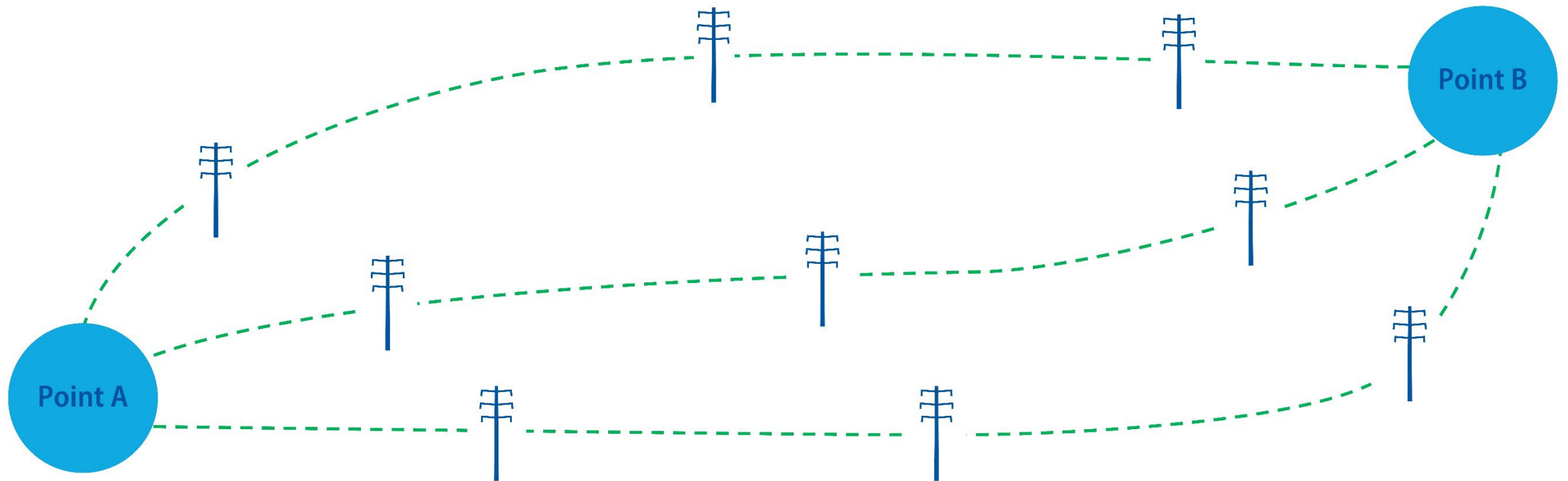
Valencia (UNSE)

2025-2026: Planning and Siting
2029-2030: Construction

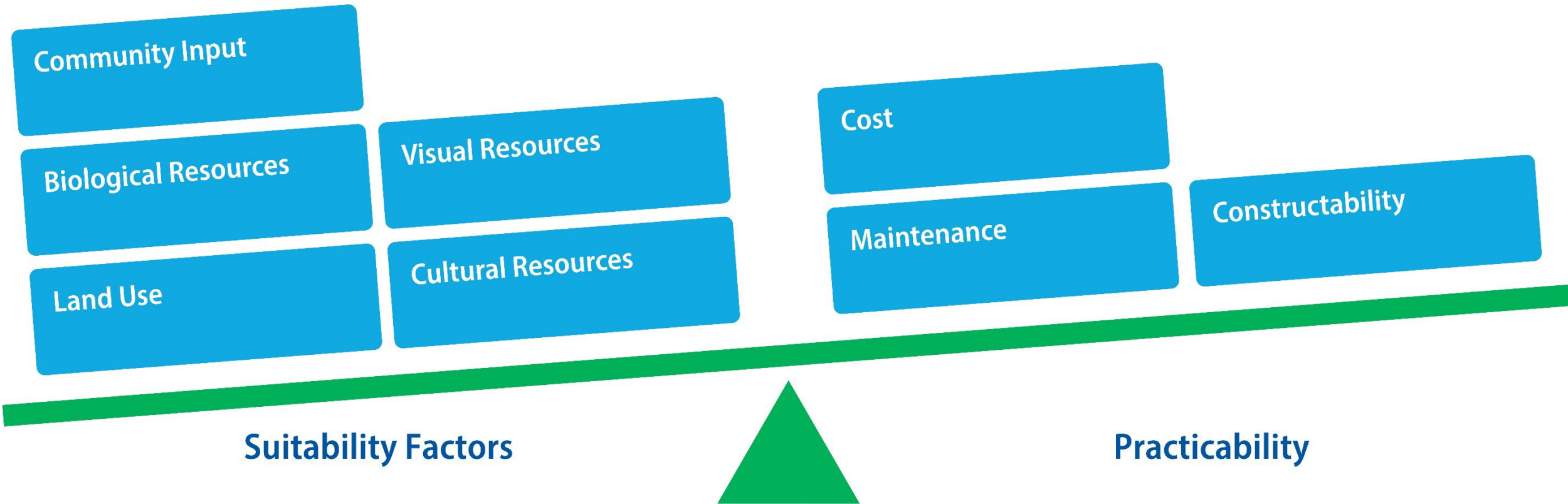
How We Deliver Energy Service to You



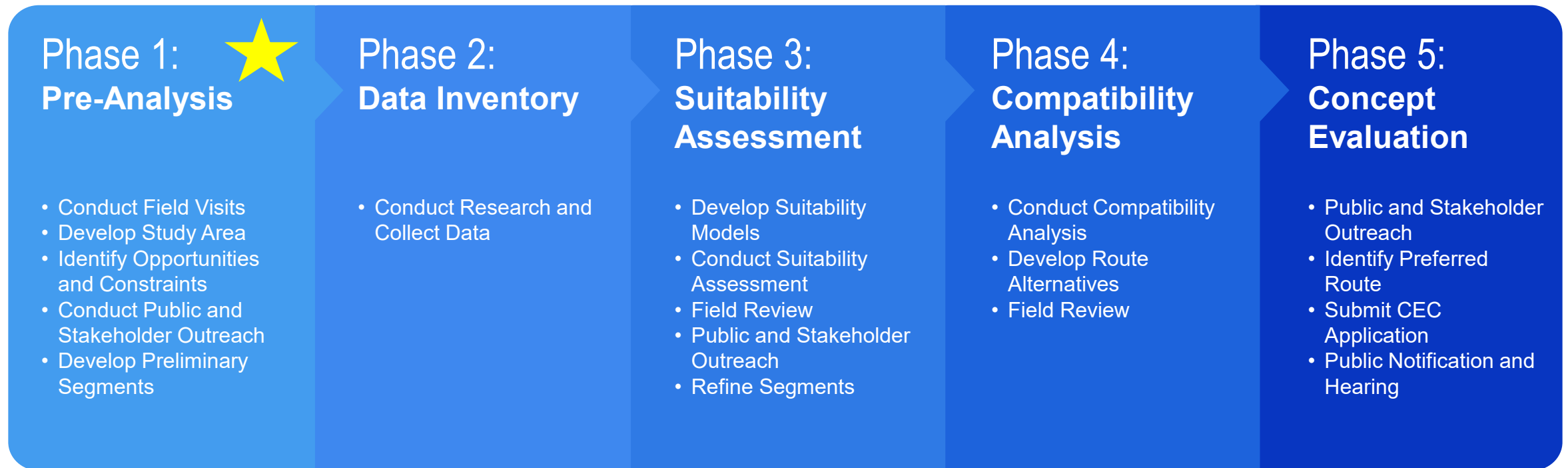
What is Siting?



Project Route Development and Evaluation

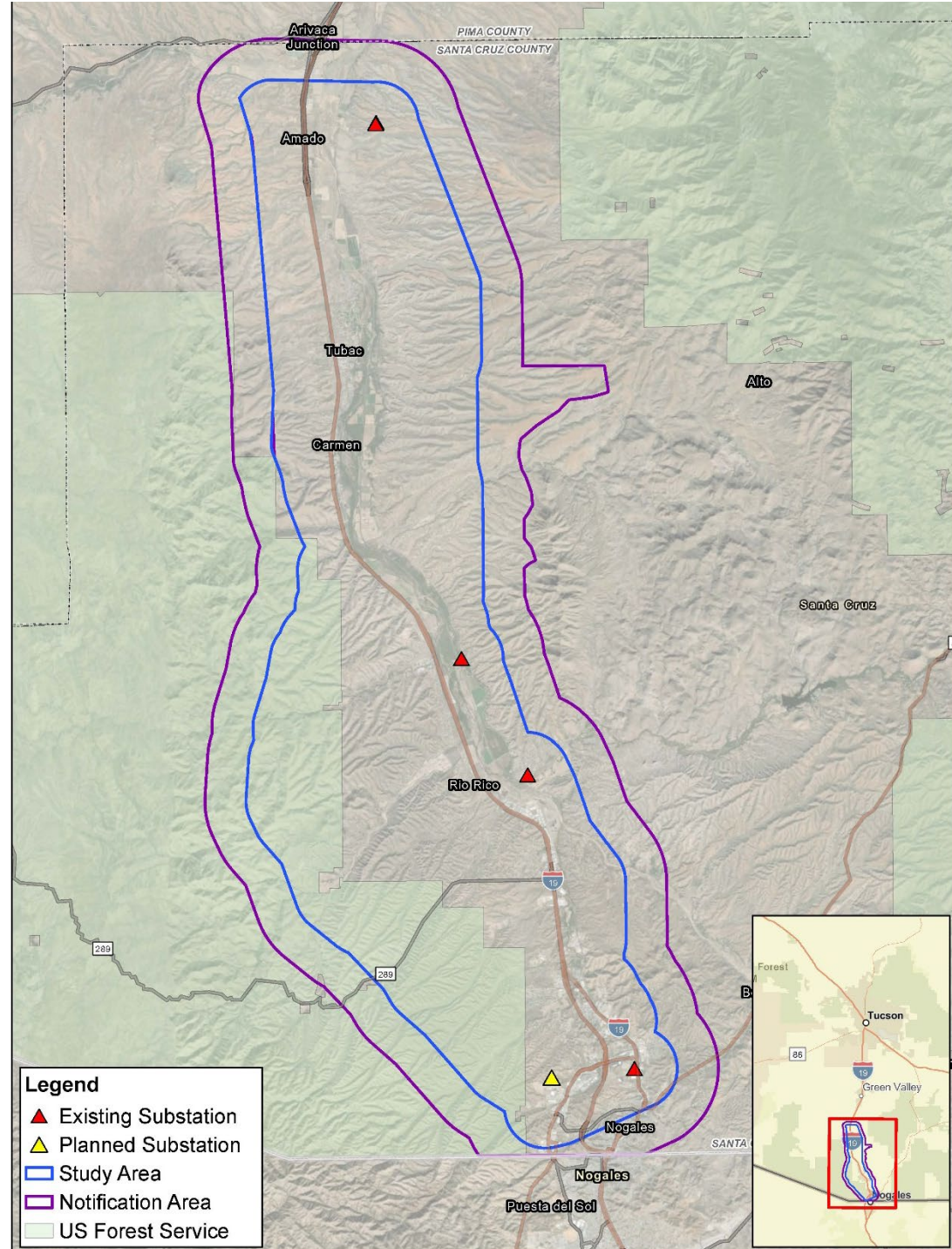


Planning and Siting Process Flowchart



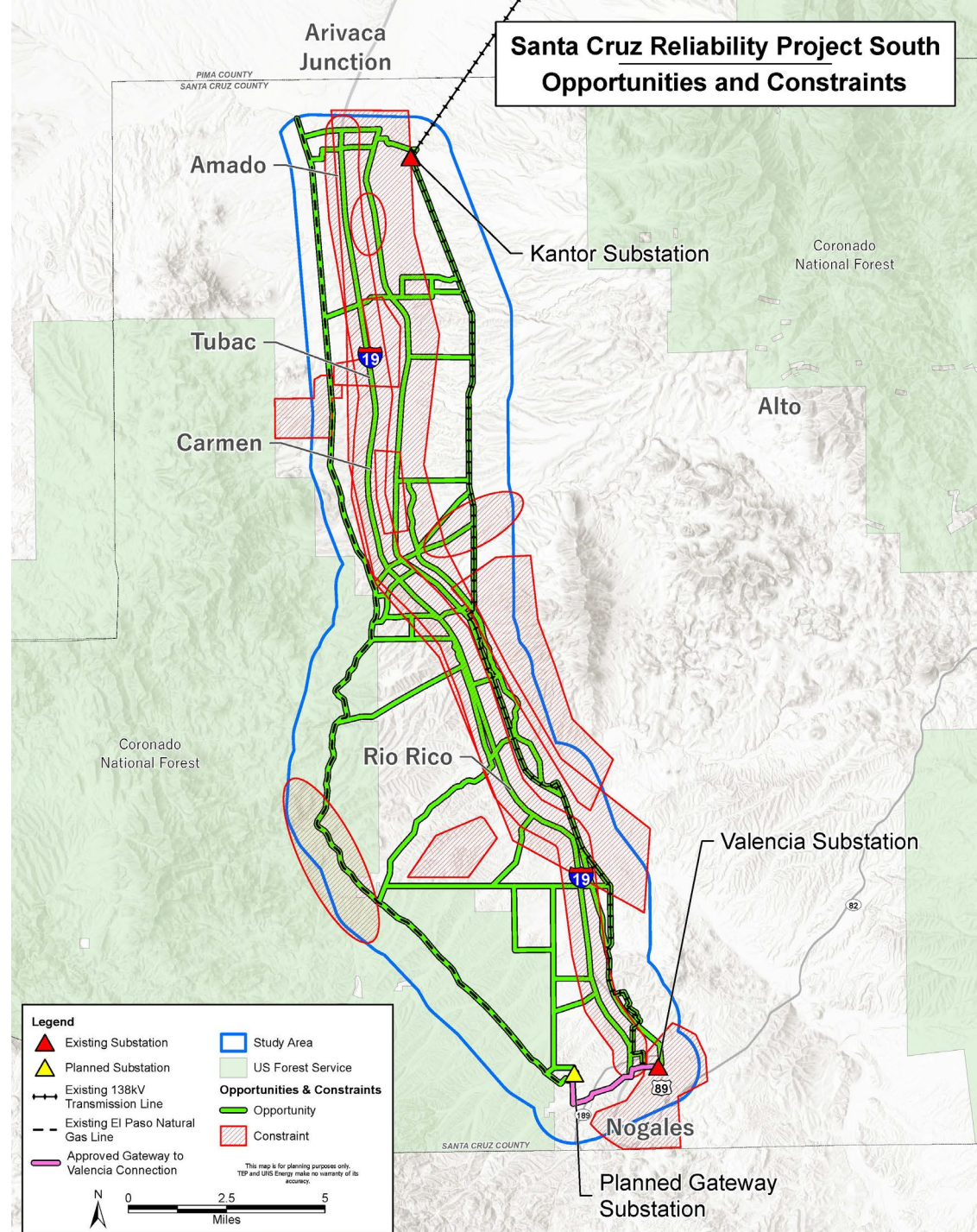
Study Area

- Provides boundaries on the area where options for transmission line routes will be identified and studied in detail.



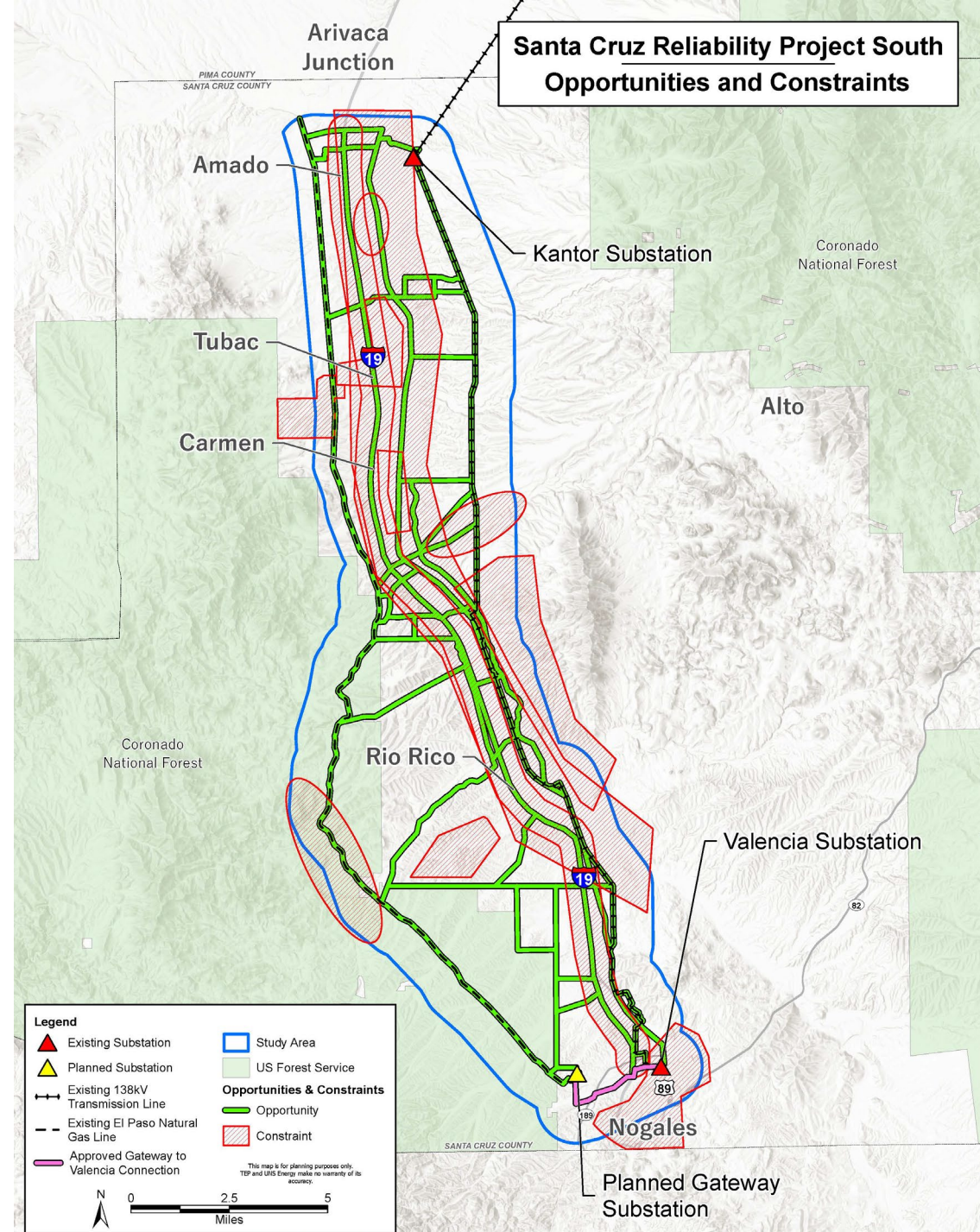
Opportunities

- Opportunities include established linear features like roadways, washes, and existing utility corridors within the study area.
- Opportunities are a starting point to determine where a transmission line could feasibly be constructed



Constraints

- Constraints represent areas that may be less compatible with a transmission line making it more challenging to construct and maintain.
- Constraints within the study area include conservation easements, residential areas, and areas of National Historic Significance such as the Tumacacori Historic Park.



Project Schedule*

- Q2 '25-Q4 '25 – Transmission Line Planning and Siting
- Q4 2025 – CEC Application Submittal
- Q1 2026 – Arizona Power Plant and Transmission Line Siting Committee Hearing
- Q2 2026 – Arizona Corporation Commission (ACC) Open Meeting

- 2027-28 – Phase 1: Construction
- 2028-29 – Phase 2: Construction
- 2029-30 – Phase 3: Construction

Public Involvement



Submit comments throughout the line siting process by a variety of means:

- Comment Forms (paper or electronic)
- Email
- Calls
- Attend future public open houses
 - Virtual Open Houses
 - May 21, 2025
 - Future – TBD
 - In-person Open Houses
 - May 13, 2025
 - August
 - October

Q&A



Q&A Format (Closed Session)

- UNSE collected comment cards.
- UNSE has sorted comment cards by topic.
- UNSE will answer the questions for each topic.
- Meeting will end promptly at 3:00 p.m.
- All questions and answers will be available on the project website.
- Any questions not covered during the time allowed will be on the website.

Project Webpage

<https://www.uesaz.com/santa-cruz-reliability-project-south/>

