

Santa Cruz Reliability Project North

PROJECT UPDATE PRESENTATION

CLARK BRYNER – MANAGER, SITING, OUTREACH AND ENGAGEMENT



Your input is important to us!

For questions or comments, we ask that you please use the provided comment cards to write down your question and we will provide a response to your questions at the end of this presentation.



August 2025

Agenda

- **Santa Cruz Reliability Project – Overview**
 - **Need and Benefits**
 - **Project Components**
- **Update - Planning and Siting Process**
- **Visual Simulations**
- **Project Schedule and Next Steps**
- **Public Participation**
- **Q&A Session**

Legend

- In-Service 138 kV Transmission Line
- Undetermined 138 kV Transmission Line
- Upgraded 138 kV Transmission Line
- In-Service 138 kV Substation
- Proposed 138 kV Substation

0 5 10 Miles



THIS PROJECT

Phase 1 - SCR North

Regional Grid (TEP)

Interstate 19

UNDETERMINED ROUTE

Kantor (UNSE)

2024-2025: Planning and Siting
2027-2028: Construction

Phase 2 - Nogales Tap-Kantor

Nogales Tap (WAPA)

Vail (TEP)

Interstate 10

Kantor (UNSE)

CEC Issued in 2017 under Decision 76468
2028-2029: Construction

Phase 3 - SCR South

Kantor (UNSE)

UNDETERMINED ROUTE

Valencia (UNSE)

Gateway (UNSE)

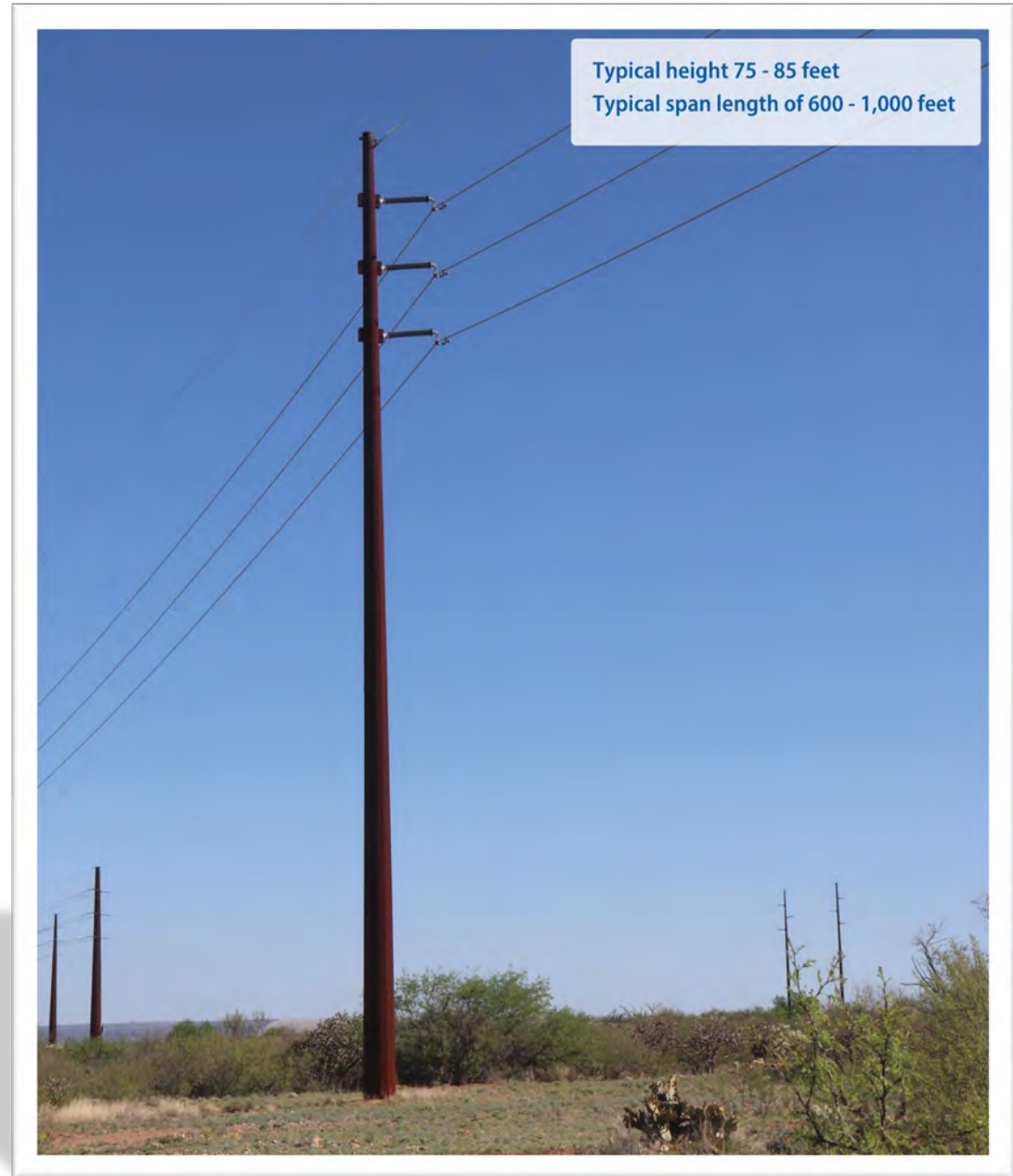
2025-2026: Planning and Siting
2029-2030: Construction

Need and Benefits

- **Improve the reliability and resiliency of the electrical transmission system serving Santa Cruz County.**
- **Maintain and strengthen reliability for Santa Cruz County and its residents, businesses and industries, including hospitals, schools, ports of entry and federal facilities.**
- **Reduce and eliminate the potential for a major and sustained outage in Santa Cruz County.**
- **Meet current and future energy needs without impacting service to existing customers.**
- **Support maintenance and other upgrades, allowing work to be performed without interrupting system operations.**


Example Pole Structure

- Tubular, Weathering Steel Monopoles
- Typical height 75 – 85 feet
- Typical span 600 – 1,000 feet



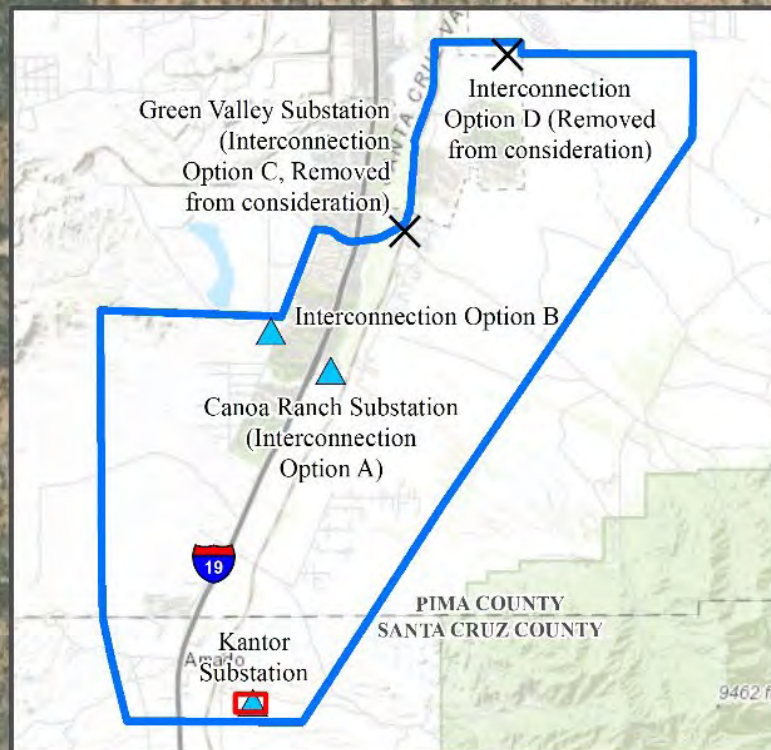
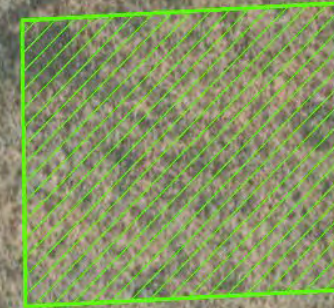
FS Road 184

KANTOR SUBSTATION EXPANSION

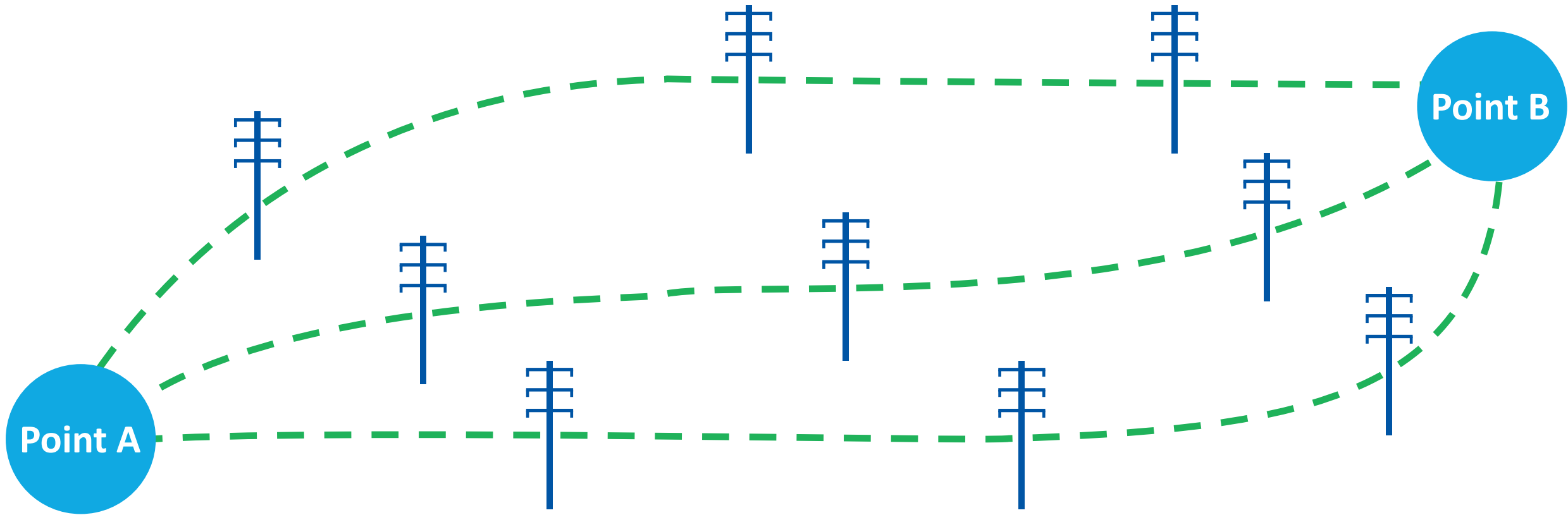
 Substation Expansion

 Project Study Area

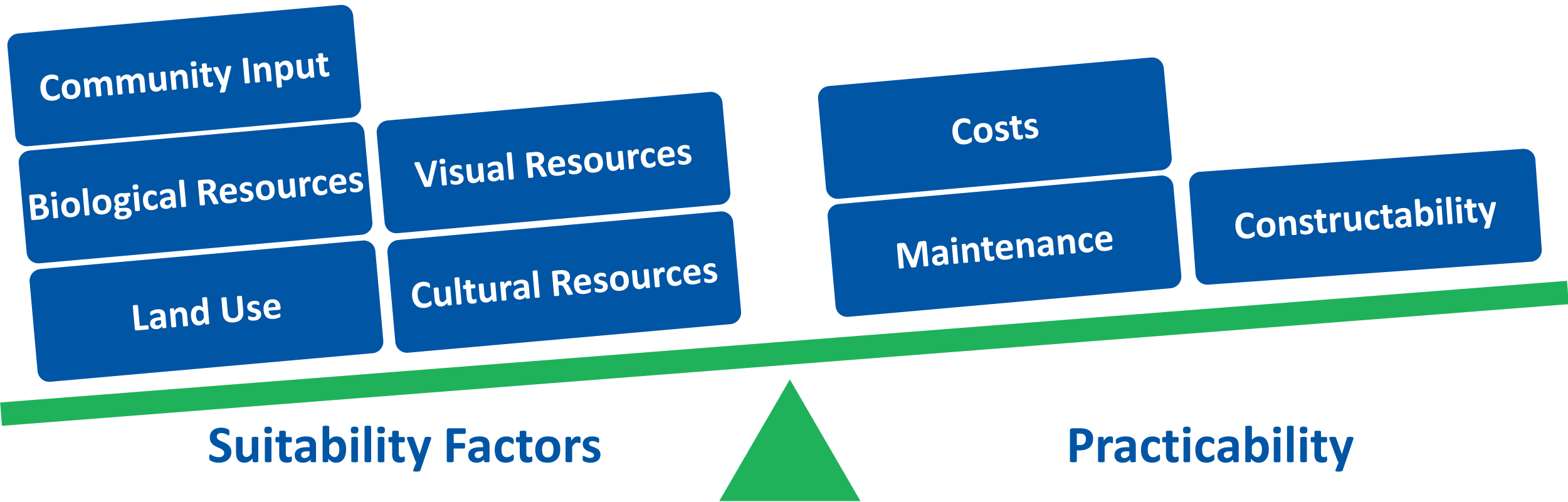
**Existing Kantor
Substation**



What is Siting?



Project Route Development and Evaluation



Planning and Siting Process Flowchart

Phase 1 Pre-Analysis

- Field Visits
- Study Area
- Opportunities & Constraints
- Outreach
- Preliminary Segments

Phase 2 Data Inventory

- Conduct Research
- Collect Data

Phase 3 Suitability

- Suitability Models
- Suitability Assessment
- Field Review
- Outreach
- Refined Segments

Phase 4 Compatibility Analysis

- Develop Route Alternatives
- Field Review

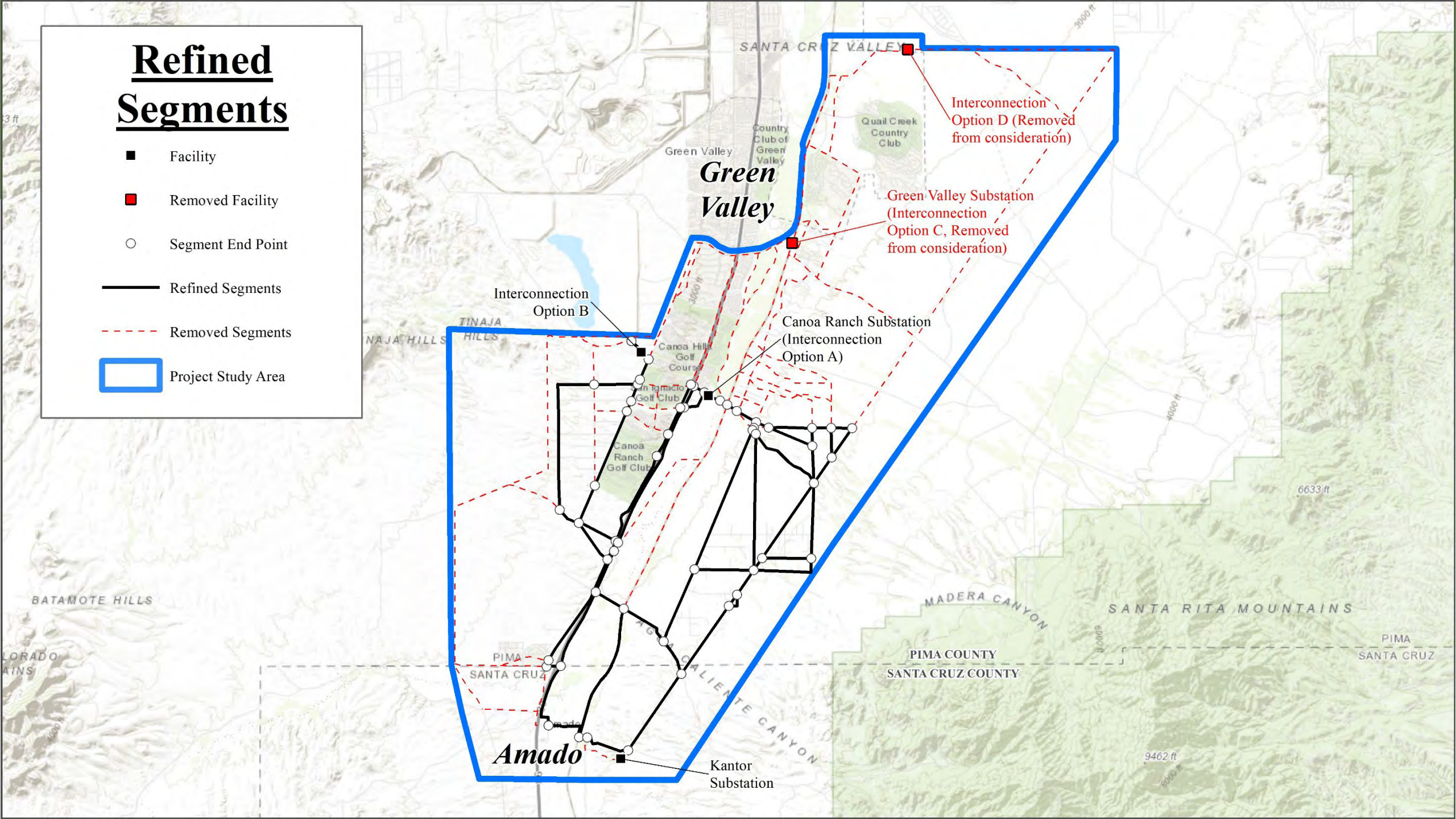
Phase 5 Concept Evaluation

- Outreach
- Identify Preferred Route
- CEC Application
- Public Notification and Hearing











Refined Segments

- Facility
- Removed Facility
- Segment End Point
- Refined Segments
- - - Removed Segments
- ▭ Project Study Area



Evaluation Criteria

- | | |
|---|--|
|  Wildlife & plant life |  Existing & planned land uses |
|  Scenic areas, historical sites & archaeological sites and structures |  Engineering feasibility and challenges |
|  Environment |  Project costs & potential impacts on customer rates |
|  Noise emission levels & interference with communication signals |  Potential public recreational uses |

Public Input *We hear you!*



Proximity to
residential areas



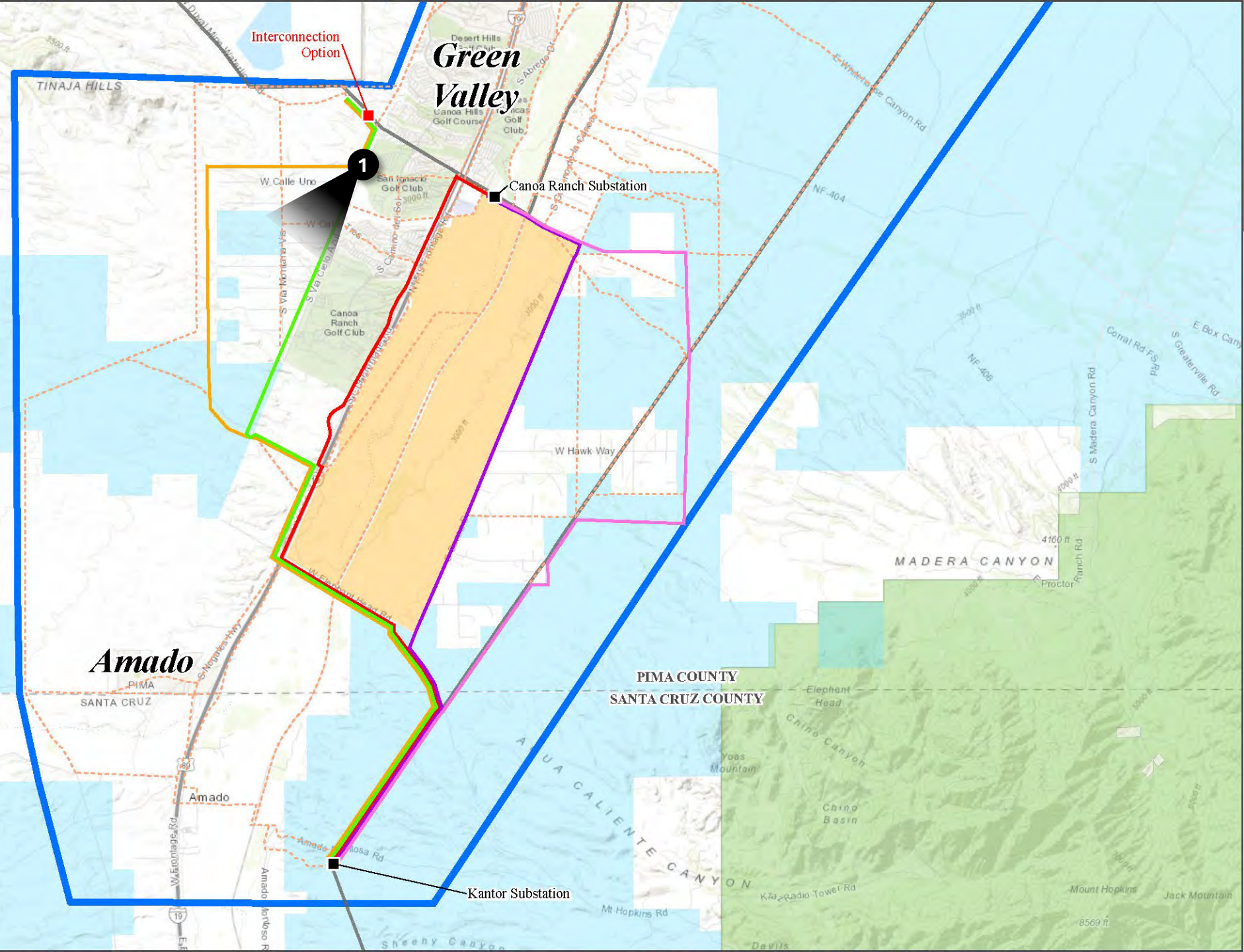
Impact on
mountain views
from residential areas



Public health,
welfare and safety

Route Alternatives

- Route 1
- Route 2
- Route 3
- Route 4
- Route 5
- Existing Substation
- Proposed Switchyard (option)
- Removed Segments
- Existing Transmission Line
- Land Surface Management**
 - US Forest Service
 - State Trust
 - Canoa Ranch Conservation Park



Visual Simulations










Key Observation Point 1

San Ignacio Ridge Estates

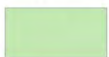
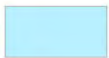

Via Nuevo Leon looking southwest along Via Cielo Azul

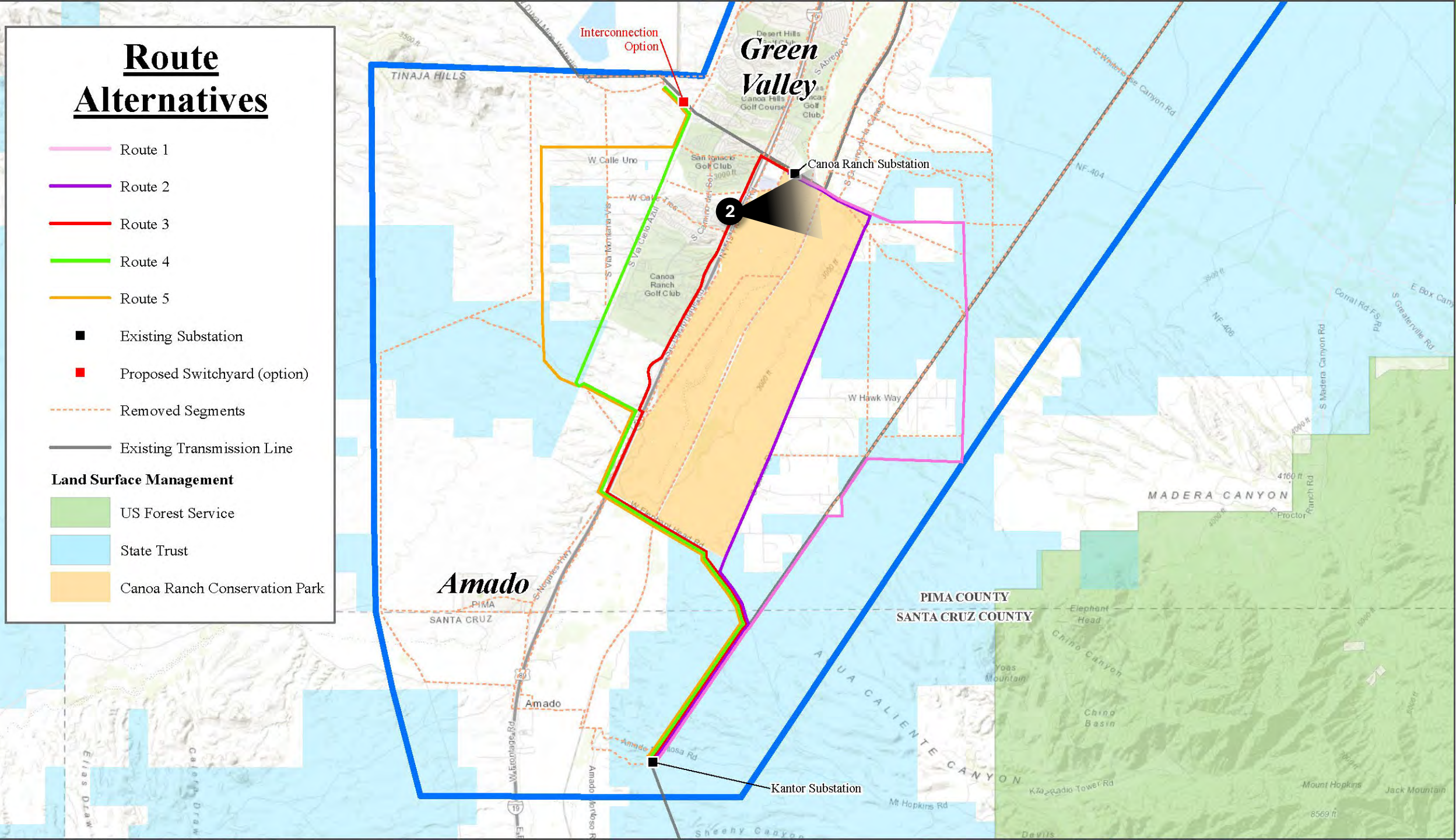


Route Alternatives

-  Route 1
-  Route 2
-  Route 3
-  Route 4
-  Route 5
-  Existing Substation
-  Proposed Switchyard (option)
-  Removed Segments
-  Existing Transmission Line

Land Surface Management

-  US Forest Service
-  State Trust
-  Canoa Ranch Conservation Park



Visual Simulations

Key Observation Point 2

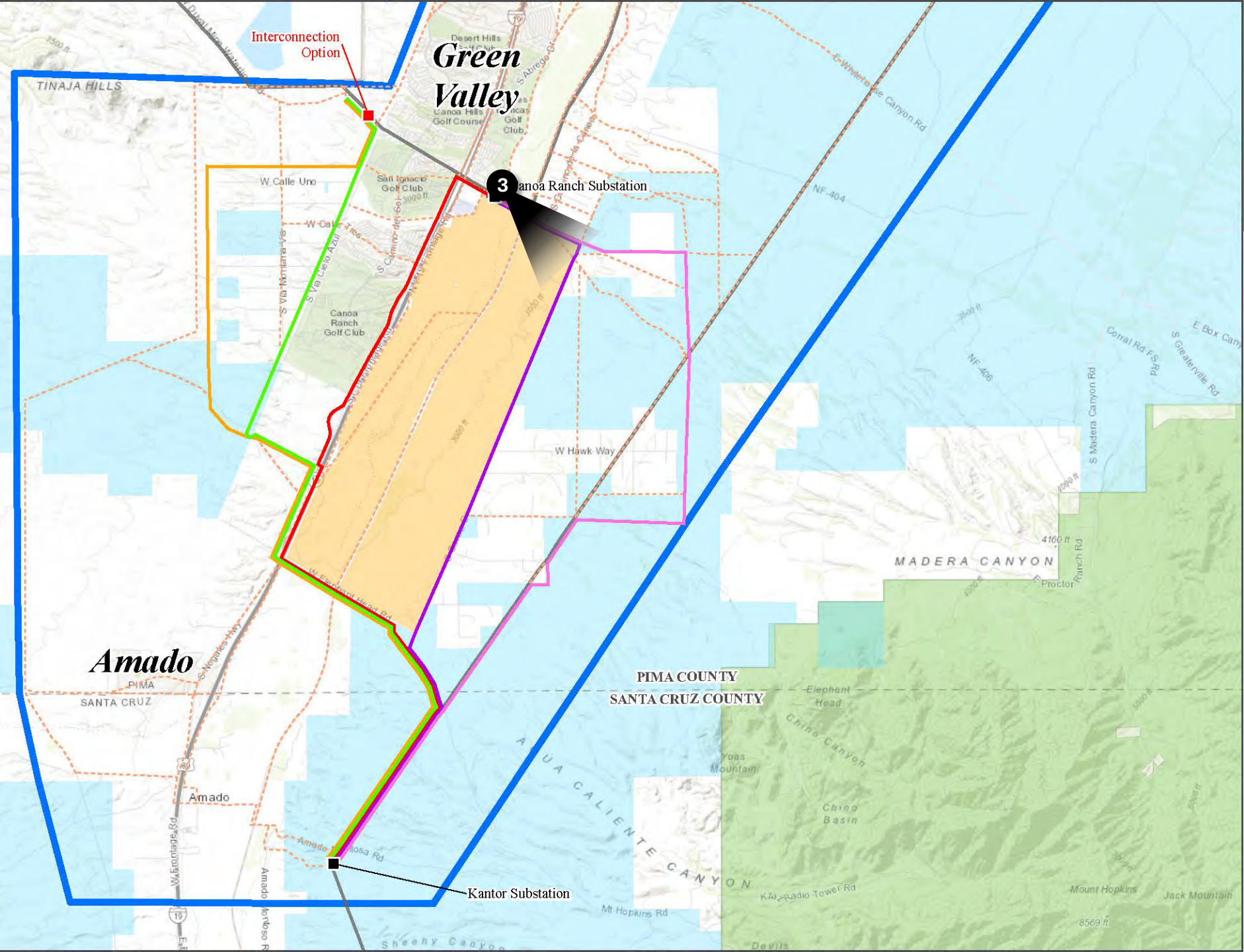
San Ignacio Vistas

Gloria View Court looking
east along I-19 frontage



Route Alternatives

- Route 1
- Route 2
- Route 3
- Route 4
- Route 5
- Existing Substation
- Proposed Switchyard (option)
- Removed Segments
- Existing Transmission Line
- Land Surface Management**
 - US Forest Service
 - State Trust
 - Canoa Ranch Conservation Park



Visual Simulations

Key Observation Point 3

The Springs

Ground Squirrel Road
looking southeast



Project Schedule and Next Steps*

Under Arizona law, certain transmission line configurations require a Certificate of Environmental Compatibility (CEC) before construction and operation along an approved route.

- **September 2025 – CEC Application Submittal**
- **November 2025 – Arizona Power Plant and Transmission Line Siting Committee Hearing**
- **Q1 2026 – Arizona Corporation Commission (ACC) Open Meeting**
- **2028 – Phase 1: Project in Service**
- **2029 – Phase 2: Project in Service**
- **2030 – Phase 3: Project in Service**

Public Participation

- Fill out an online comment form at: uesaz.com/santa-cruz-reliability-north
- Send comments via email to: scrnorth@uesaz.com
- Call (520) 917-6635 and leave a voicemail message
- Mail a letter with comments to:
ATTN: Santa Cruz Reliability North
P.O. Box 711
Mail Stop CB200
Tucson, AZ 85701-0711

Public Open House Opportunities

Tuesday, August 5, 2025. 9-11 a.m.
Hosted by the Green Valley Council
Green Valley Recreation East Center
7 S Abrego Drive
Green Valley, AZ 85614

Tuesday, August 5, 2025. 5-7 p.m.
Sopori Elementary School
5000 W. Arivaca Rd.
Amado, AZ 85645

Virtual Presentation Option

Thursday, August 7, 2025. 4:30-5:30 p.m.
Hosted via Microsoft Teams
Meeting ID/Login: 238 531 081 327
Passcode: kPc45
Call-in Option: (712) 274-3750; ID: 73476288

Q&A Session



Your input is important to us!

For questions or comments, we ask that you please use the provided comment cards to write down your question and we will answer your question in the order it was received.

THANK YOU!