

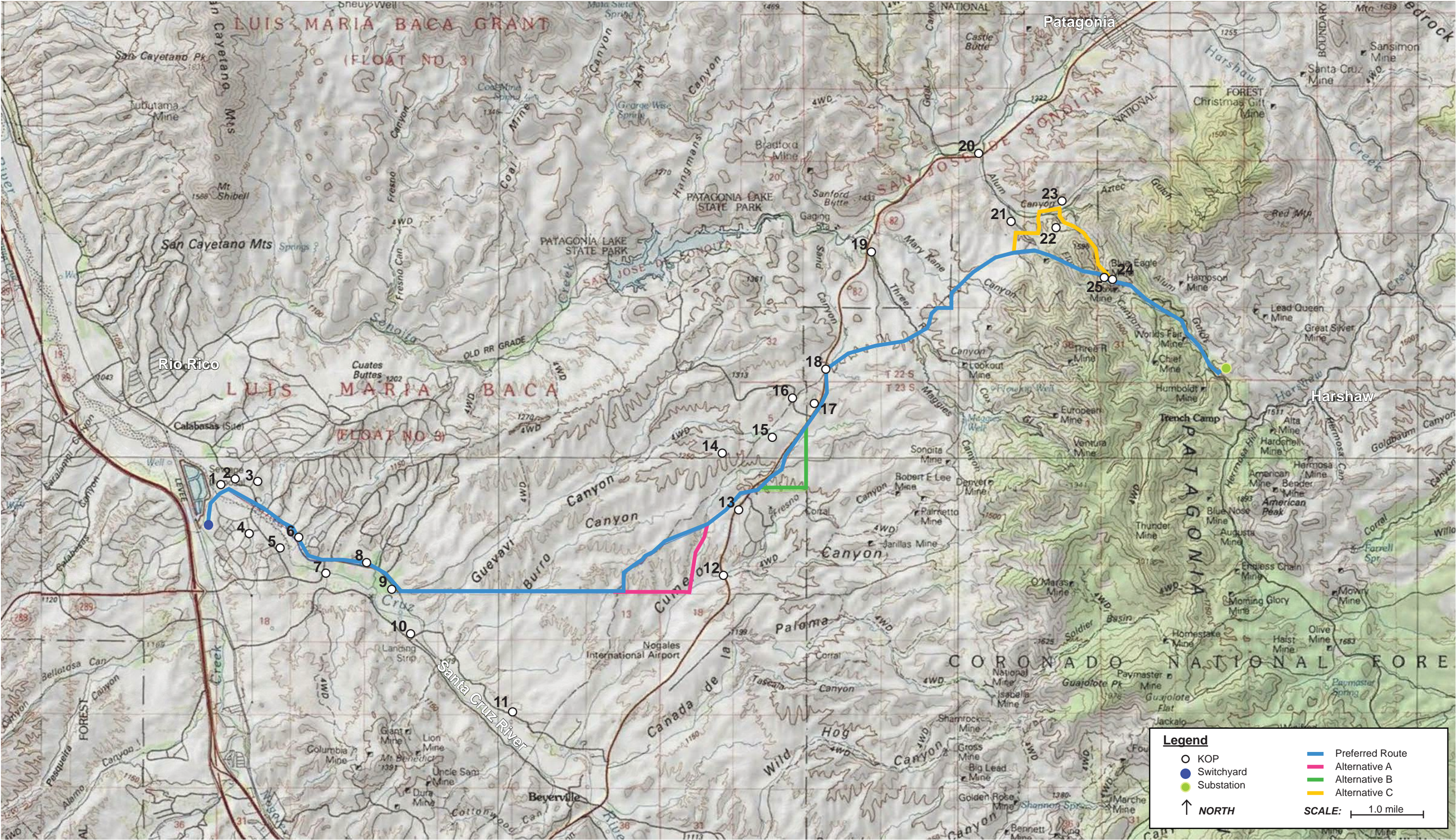


***Rio Rico to Harshaw 138kV Project
Visual Resource Exhibit***

Visual Simulations

Prepared By:
Jeremy Palmer | Sole Proprietor

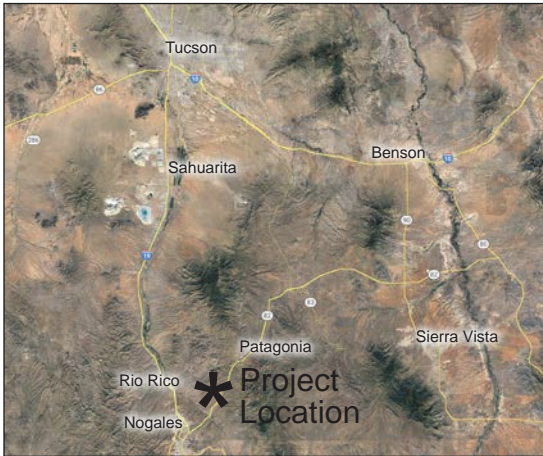
January 22nd, 2023



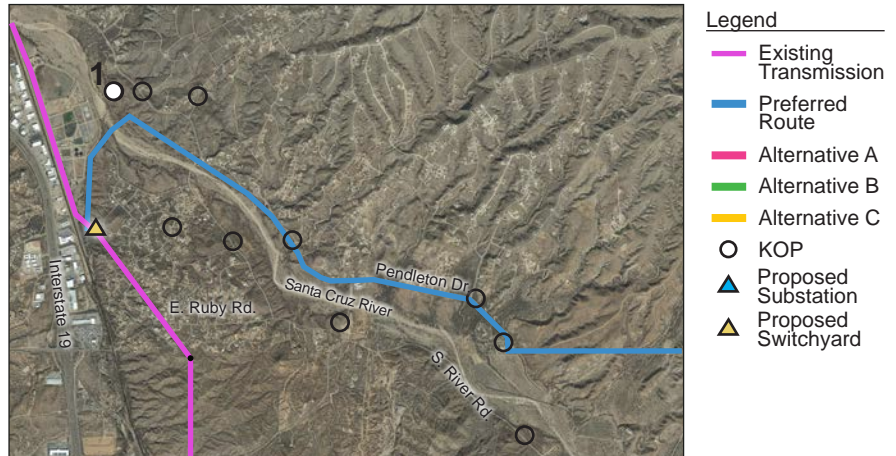
Key Observation Points - (KOPs)

Rio Rico to Harshaw 138kV Transmission Line Project

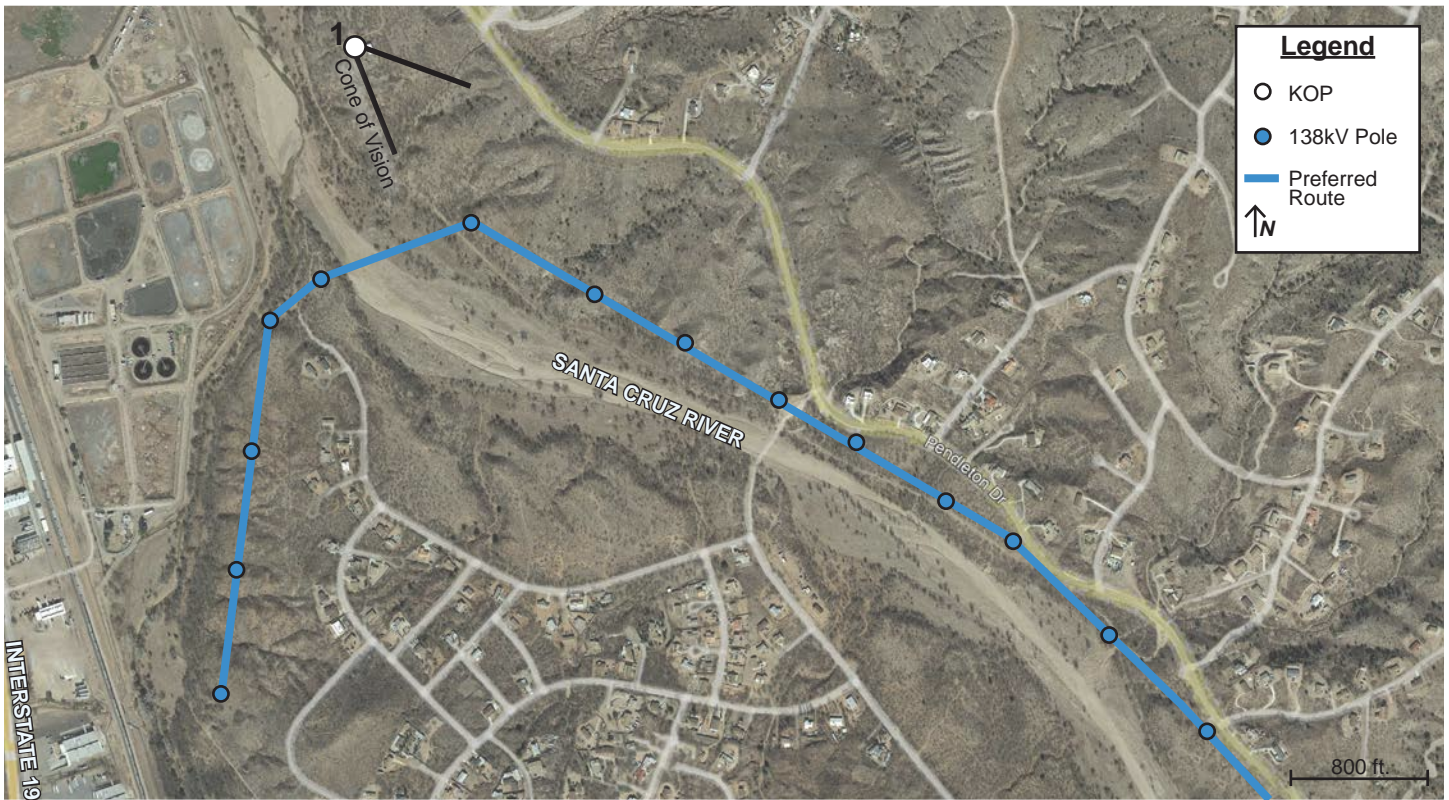
Key Observation Point (KOP) # 1



Vicinity Map



Project Map Enlargement



Notes:

Camera Information

- Type: Canon EOS RP
- Sensor: CMOS (Full-Frame) 35.9mm x 24mm
- Lens: Canon RF 24-105mm f/4-7.1 IS STM
- Focal Length: 24mm | F-Stop: f/9 | ISO:100
- Dimensions in pixel: 6240 x 4160

KOP

- Representative View for: visitors to National Historic Site
- Location: Mission San Cayetano de Calabasas
- Latitude: 31.452623° N; Longitude: 110.959677° W
- View Point Elevation at Eye Level: 3,505 ft.
- Looking: south southeast
- Poles Visible: Steel Monopoles
- Image File Name: IMG_1841.JPG

Simulation Notes

- Photo Taken: November 7, 2022 at 12:52 am
- The image is based on a single photo and represent approximately 73.7 degree horizontal field of view.
- This view is approximately 1,249 feet north northwest of the nearest pole represented in the simulation.
- The simulation is based on the best information available and is preliminary. Final alignment and structure locations are subject to change based on final engineering and other factors.

Rio Rico to Harshaw 138kV Transmission Line Project

Key Observation Point (KOP) #1



Existing Condition



Simulated Condition

Rio Rico to Harshaw 138kV Transmission Line Project

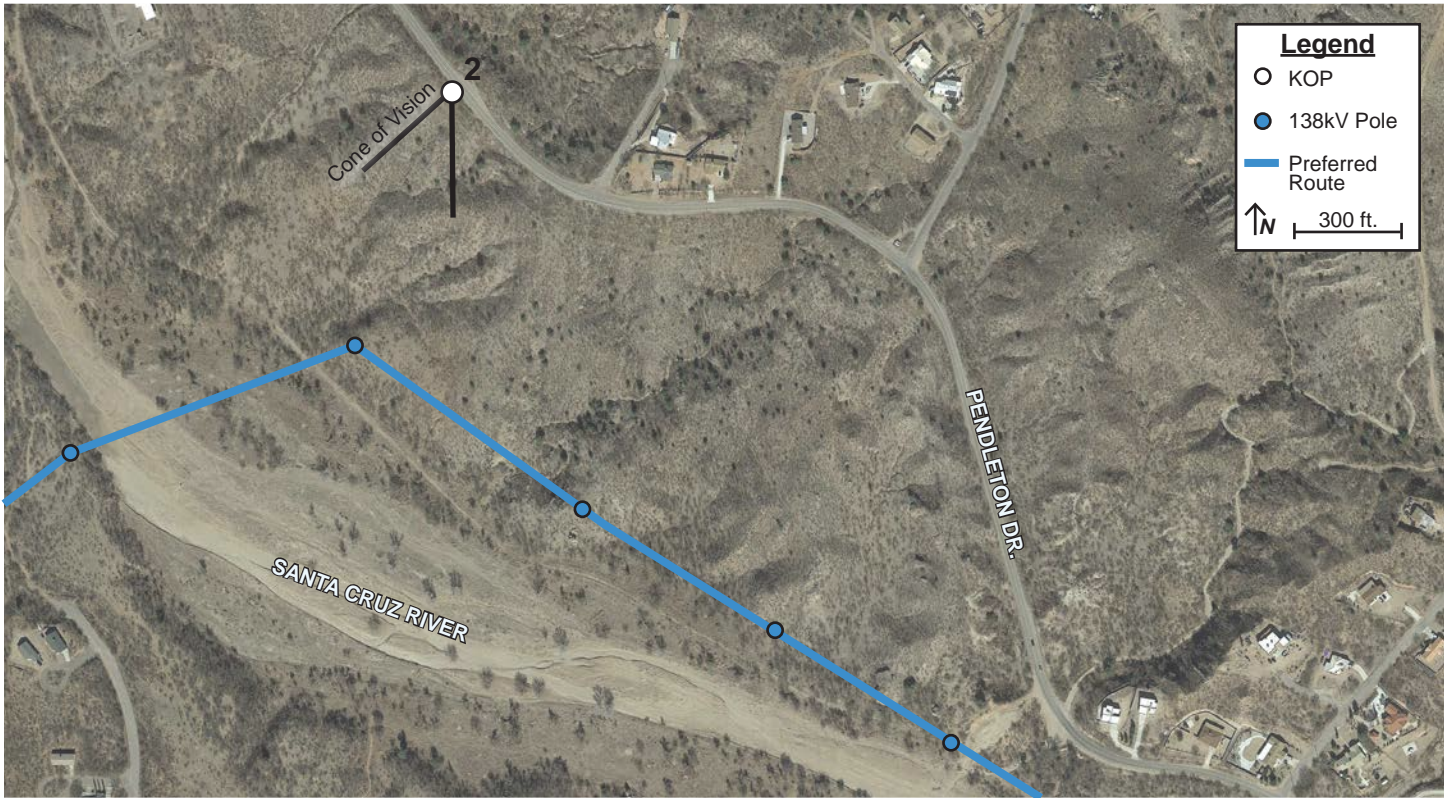
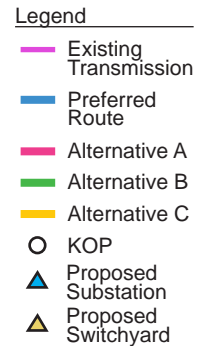
Key Observation Point (KOP) # 2



Vicinity Map



Project Map Enlargement



Notes:

Camera Information

- Type: Canon EOS RP
- Sensor: CMOS (Full-Frame) 35.9mm x 24mm
- Lens: Canon RF 24-105mm f/4-7.1 IS STM
- Focal Length: 50mm | F-Stop: f/9 | ISO:100
- Dimensions in pixel: 6240 x 4160

KOP

- Representative View for: residents, recreational user
- Location: 1033 Pendleton Dr.
- Latitude: 31.451847° N; Longitude: 110.956278° W
- View Point Elevation at Eye Level: 3,533 ft.
- Looking: south southwest
- Poles Visible: Steel Monopoles, Transmission Line
- Image File Name: IMG_1280.JPG

Simulation Notes

- Photo Taken: August 12th, 2022 at 11:26 am
- The image is based on a single photo and represent approximately 39.5 degree horizontal field of view.
- This view is approximately 781 feet north northeast of the nearest pole represented in the simulation.
- The simulation is based on the best information available and is preliminary. Final alignment and structure locations are subject to change based on final engineering and other factors.

Rio Rico to Harshaw 138kV Transmission Line Project

Key Observation Point (KOP) #2



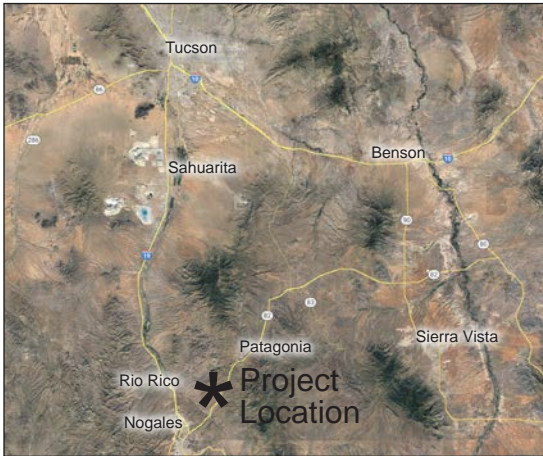
Existing Condition



Simulated Condition

Rio Rico to Harshaw 138kV Transmission Line Project

Key Observation Point (KOP) # 3

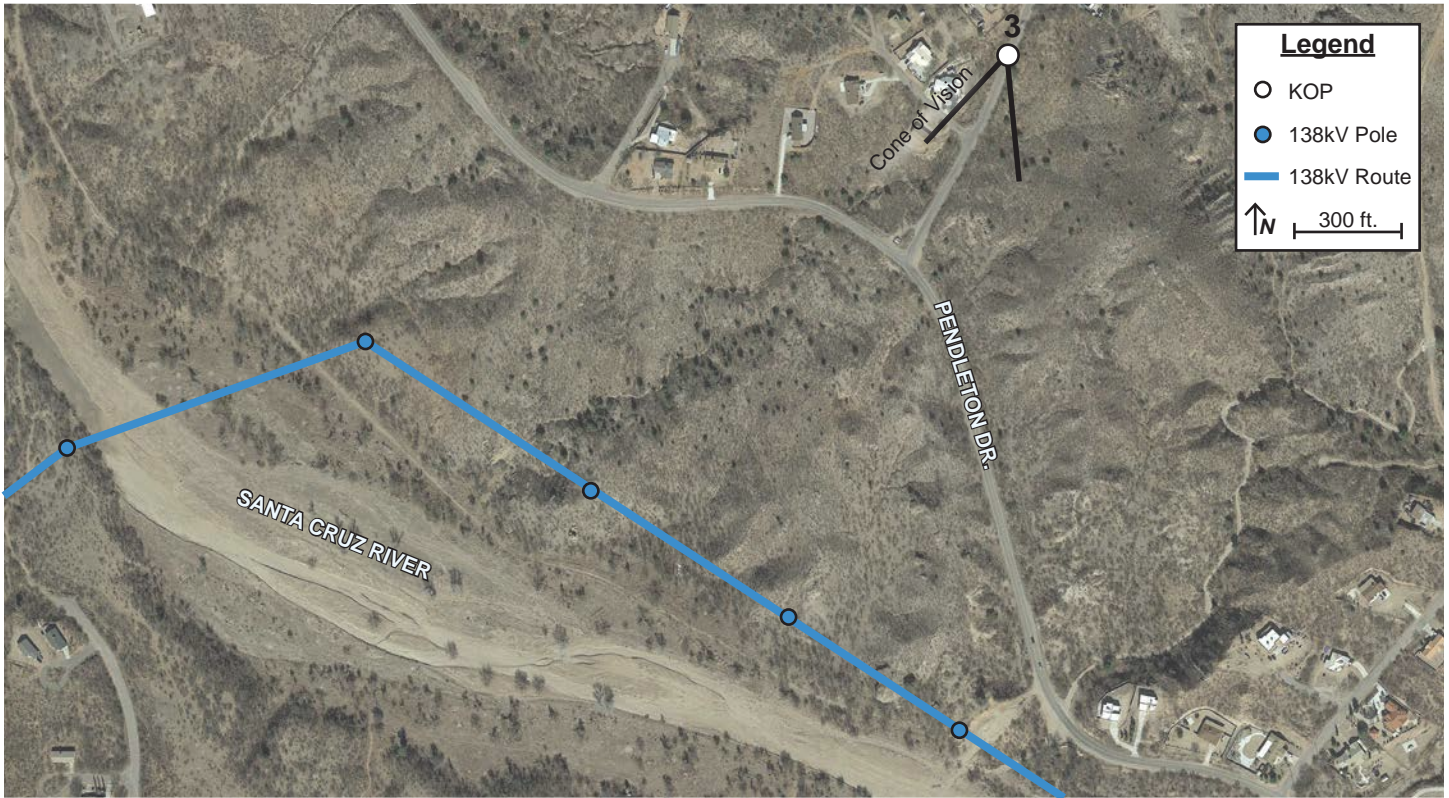


Vicinity Map



Project Map Enlargement

- Legend**
- Existing Transmission
 - Preferred Route
 - Alternative A
 - Alternative B
 - Alternative C
 - KOP
 - Proposed Substation
 - Proposed Switchyard



Notes:

Camera Information

- Type: Canon EOS RP
- Sensor: CMOS (Full-Frame) 35.9mm x 24mm
- Lens: Canon RF 24-105mm f/4-7.1 IS STM
- Focal Length: 50mm | F-Stop: f/10 | ISO:100
- Dimensions in pixel: 6240 x 4160

KOP

- Representative View for: residents
- Location: 130 Camino San Xavier
- Latitude: 31.453630° N; Longitude: 110.958166° W
- View Point Elevation at Eye Level: 3,573 ft.
- Looking: southwest
- Poles Visible: Structures
- Image File Name: IMG_1258.JPG

Simulation Notes

- Photo Taken: August 12, 2022, 11:18 AM
- The image is based on a single photo and represent approximately 39.5 degree horizontal field of view.
- This view is approximately 849 feet northeast of the nearest pole represented in the simulation.
- The simulation is based on the best information available and is preliminary. Final alignment and structure locations are subject to change based on final engineering and other factors.

Rio Rico to Harshaw 138kV Transmission Line Project

Key Observation Point (KOP) #3



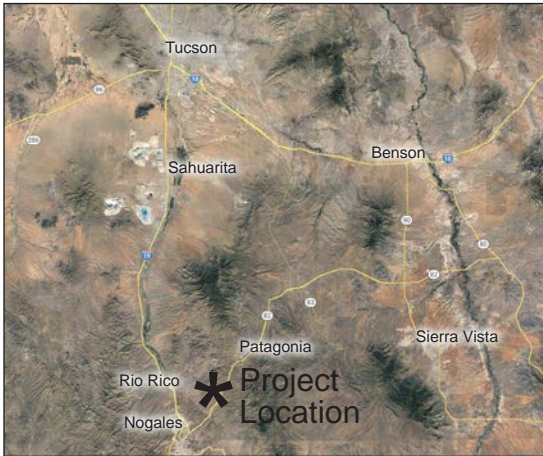
Existing Condition



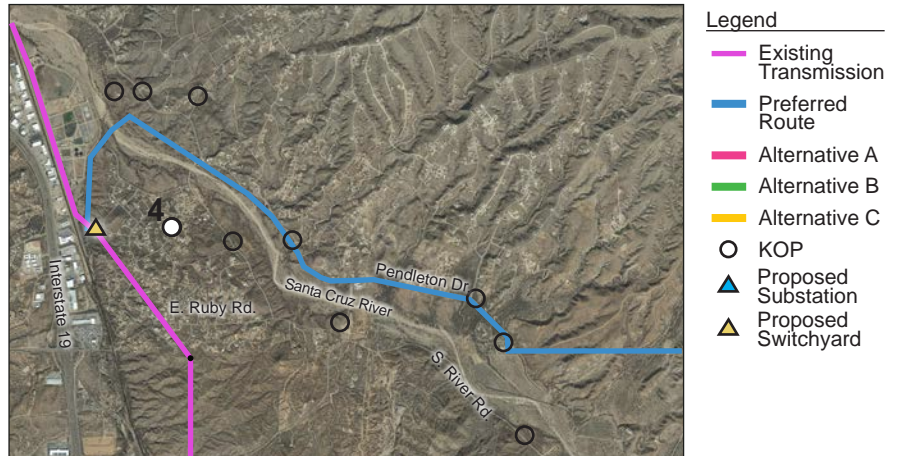
Simulated Condition

Rio Rico to Harshaw 138kV Transmission Line Project

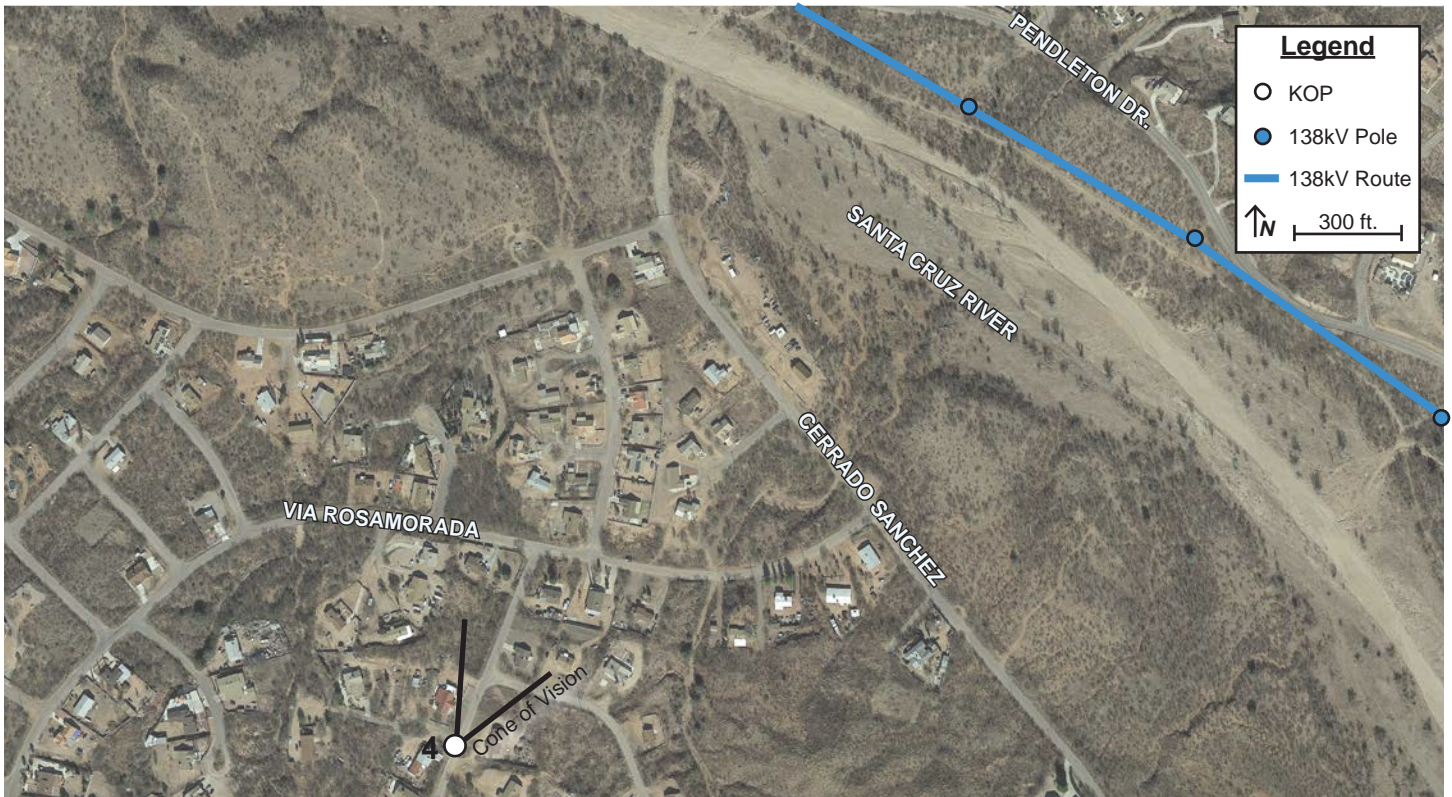
Key Observation Point (KOP) # 4



Vicinity Map



Project Map Enlargement



Notes:

Camera Information

- Type: Canon EOS RP
- Sensor: CMOS (Full-Frame) 35.9mm x 24mm
- Lens: Canon RF 24-105mm f/4-7.1 IS STM
- Focal Length: 50mm | F-Stop: f/8 | ISO:250
- Dimensions in pixel: 6240 x 4160

KOP

- Representative View for: residents
- Location: 111 Calle Quitana
- Latitude: 31.440483° N; Longitude: 110.954115° W
- View Point Elevation at Eye Level: 3,558 ft.
- Looking: north northeast
- Poles Visible: Structures
- Image File Name: IMG_1047.JPG

Simulation Notes

- Photo Taken: August 12, 2022, 9:50 AM
- The image is based on a single photo and represent approximately 39.5 degree horizontal field of view.
- This view is approximately 2,126 feet southwest of the nearest pole represented in the simulation.
- The simulation is based on the best information available and is preliminary. Final alignment and structure locations are subject to change based on final engineering and other factors.

Rio Rico to Harshaw 138kV Transmission Line Project

Key Observation Point (KOP) #4



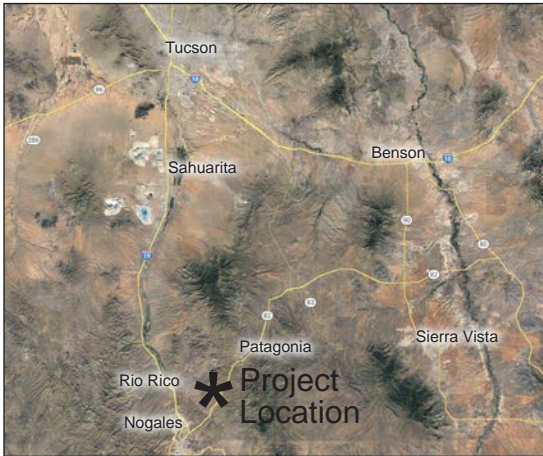
Existing Condition



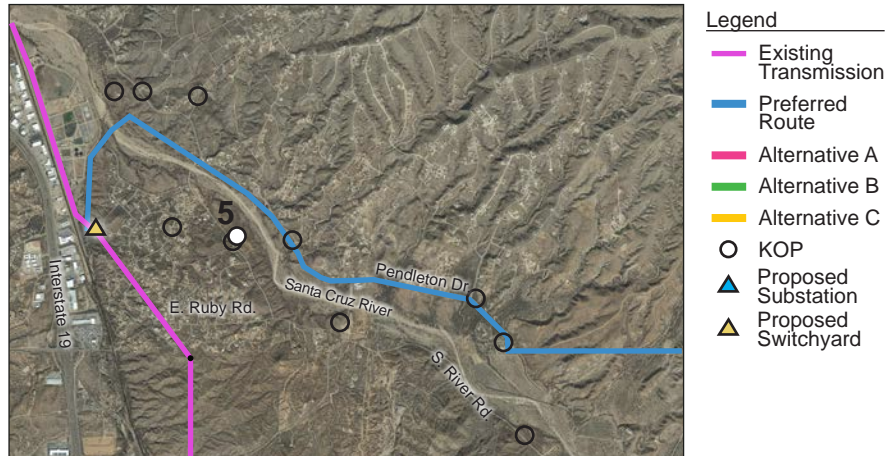
Simulated Condition

Rio Rico to Harshaw 138kV Transmission Line Project

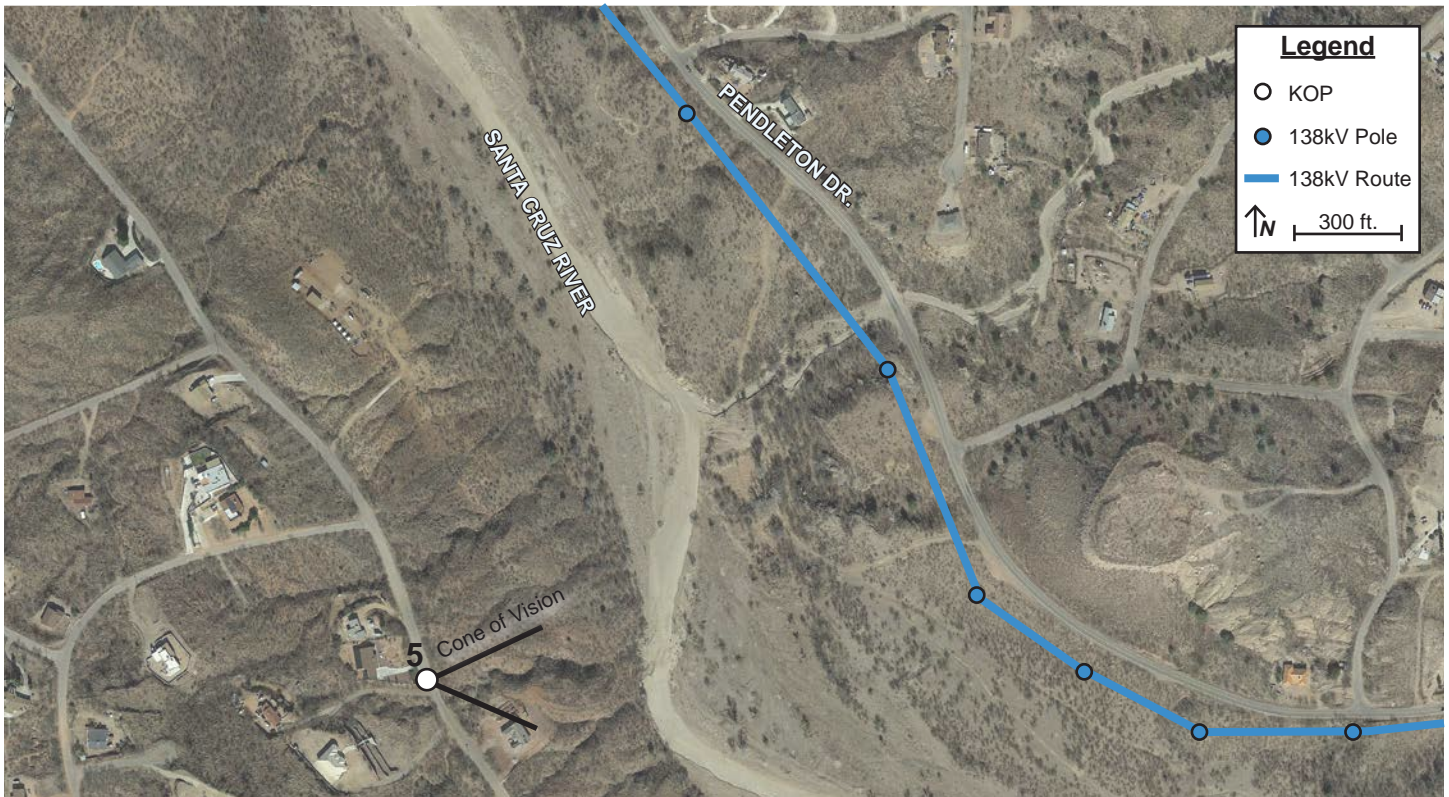
Key Observation Point (KOP) # 5



Vicinity Map



Project Map Enlargement



Notes:

Camera Information

- Type: Canon EOS RP
- Sensor: CMOS (Full-Frame) 35.9mm x 24mm
- Lens: Canon RF 24-105mm f/4-7.1 IS STM
- Focal Length: 50mm | F-Stop: f/5 | ISO:160
- Dimensions in pixel: 6240 x 4160

KOP

- Representative View for: residents
- Location: 890 Cerrado Sanchez
- Latitude: 31.434978° N; Longitude: 110.944313° W
- View Point Elevation at Eye Level: 3,575 ft.
- Looking: west
- Poles Visible: Structures
- Image File Name: IMG_1115.JPG

Simulation Notes

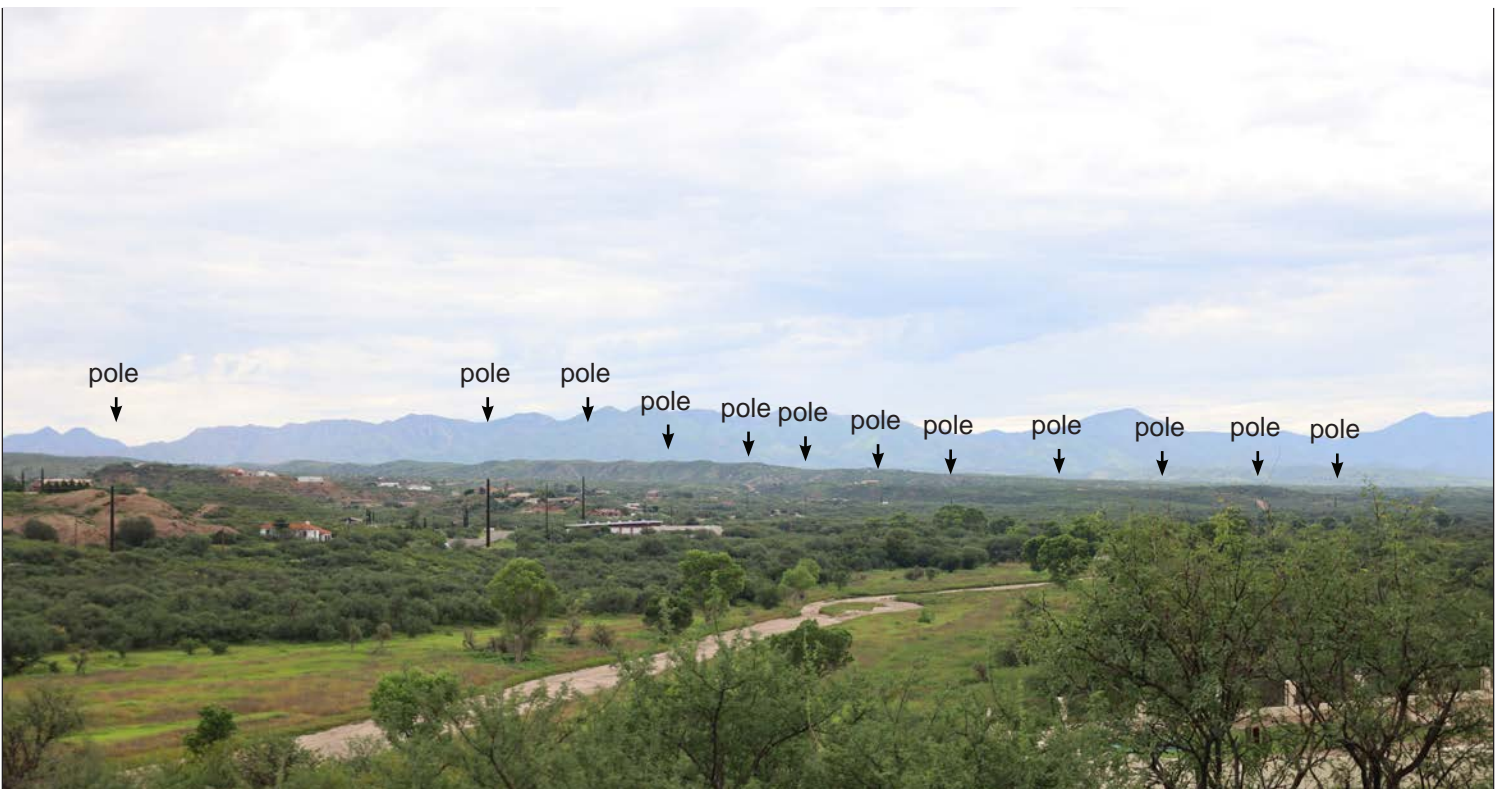
- Photo Taken: August 12, 2022, 10:18 AM
- The image is based on a single photo and represent approximately 39.5 degree horizontal field of view.
- This view is approximately 515 feet west of the nearest pole represented in the simulation.
- The simulation is based on the best information available and is preliminary. Final alignment and structure locations are subject to change based on final engineering and other factors.

Rio Rico to Harshaw 138kV Transmission Line Project

Key Observation Point (KOP) #5



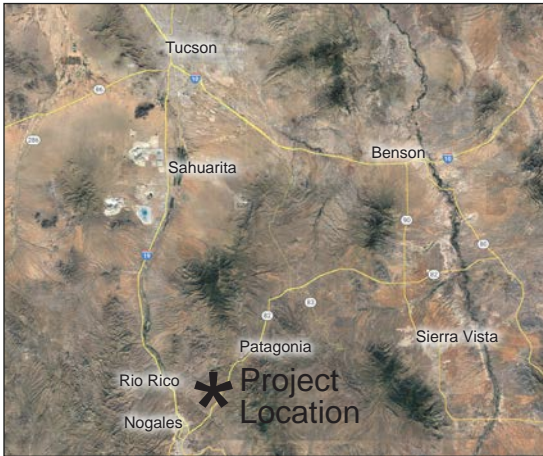
Existing Condition



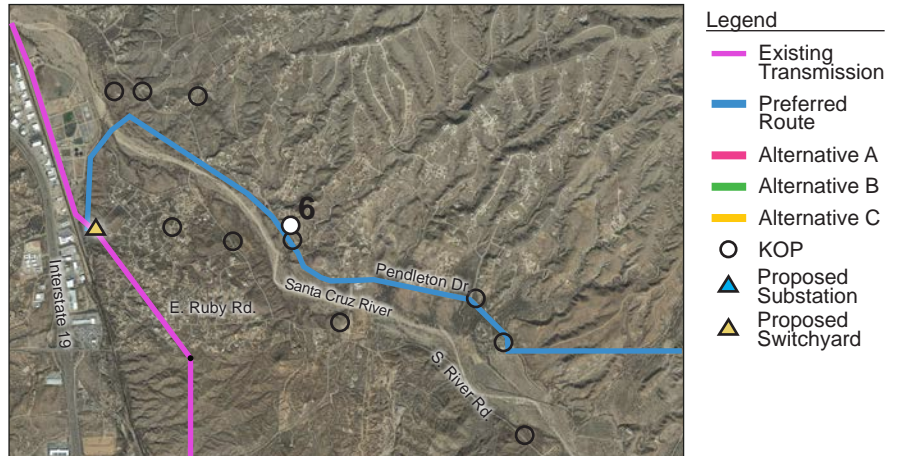
Simulated Condition

Rio Rico to Harshaw 138kV Transmission Line Project

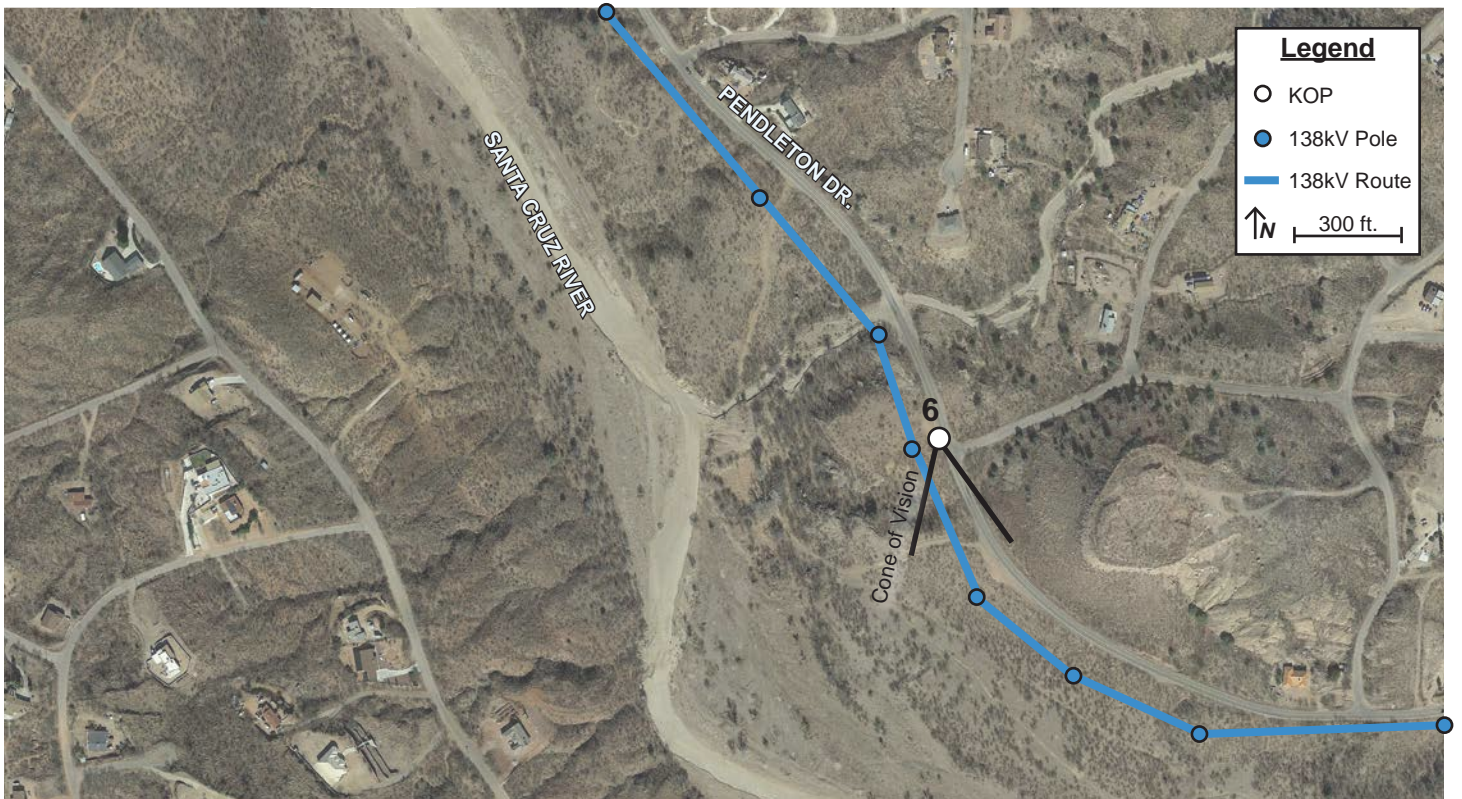
Key Observation Point (KOP) # 6



Vicinity Map



Project Map Enlargement



Notes:

Camera Information

- Type: Canon EOS RP
- Sensor: CMOS (Full-Frame) 35.9mm x 24mm
- Lens: Canon RF 24-105mm f/4-7.1 IS STM
- Focal Length: 24mm | F-Stop: f/9 | ISO:100
- Dimensions in pixel: 6240 x 4160

KOP

- Representative View for: residents
- Location: 858 Pendleton Drive
- Latitude: 31.438664° N; Longitude: 110.940822° W
- View Point Elevation at Eye Level: 3,535 ft.
- Looking: south southeast
- Poles Visible: Structures
- Image File Name: IMG_1236.JPG

Simulation Notes

- Photo Taken: August 12, 2022, 11:10 AM
- The image is based on a single photo and represent approximately 73.7 degree horizontal field of view.
- This view is approximately 200 feet north of the nearest pole represented in the simulation.
- The simulation is based on the best information available and is preliminary. Final alignment and structure locations are subject to change based on final engineering and other factors.

Rio Rico to Harshaw 138kV Transmission Line Project

Key Observation Point (KOP) #6



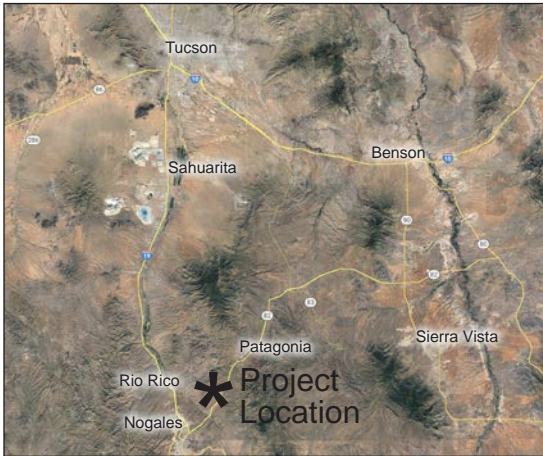
Existing Condition



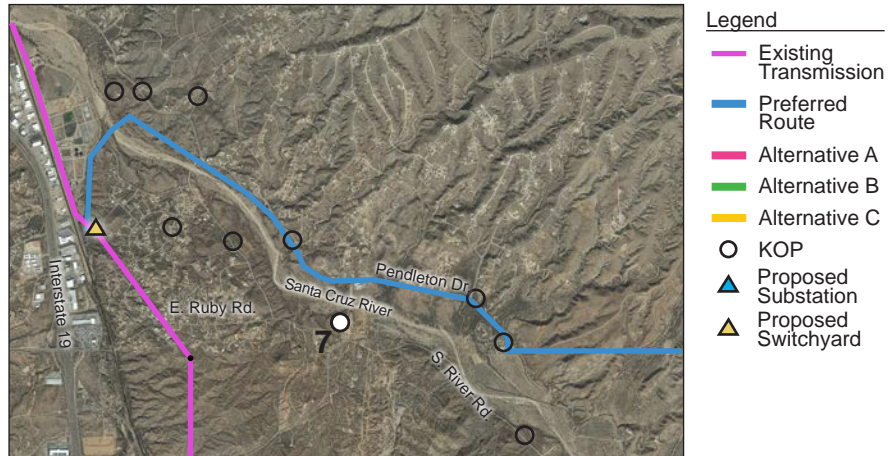
Simulated Condition

Rio Rico to Harshaw 138kV Transmission Line Project

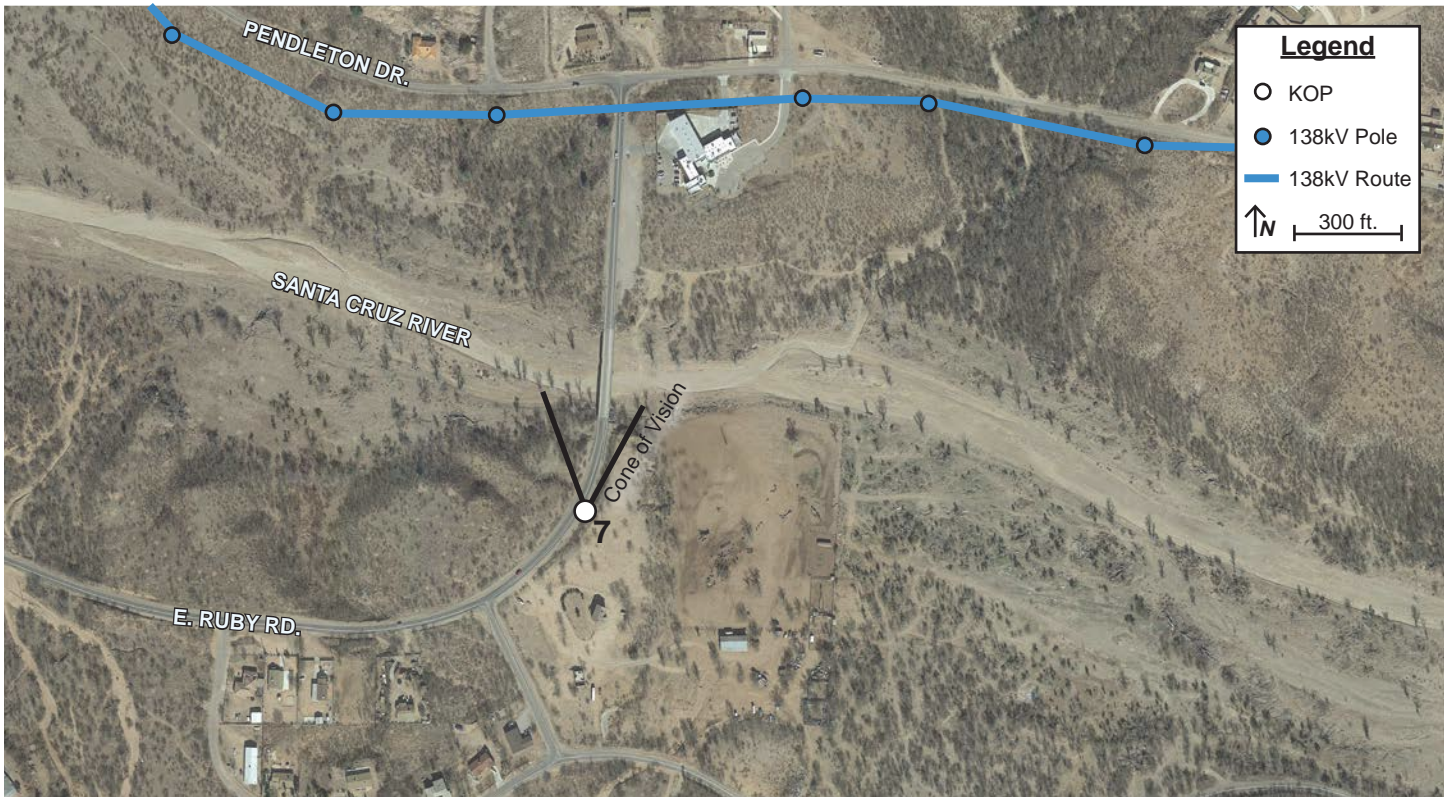
Key Observation Point (KOP) # 7



Vicinity Map



Project Map Enlargement



Notes:

Camera Information

- Type: Canon EOS RP
- Sensor: CMOS (Full-Frame) 35.9mm x 24mm
- Lens: Canon RF 24-105mm f/4-7.1 IS STM
- Focal Length: 35mm | F-Stop: f/6.3 | ISO:100
- Dimensions in pixel: 6240 x 4160

KOP

- Representative View for: residents
- Location: 500 East Ruby Road
- Latitude: 31.432876° N; Longitude: 110.935920° W
- View Point Elevation at Eye Level: 3,533 ft.
- Looking: north
- Poles Visible: Structures
- Image File Name: IMG_1137.JPG

Simulation Notes

- Photo Taken: August 12, 2022, 10:28 AM
- The image is based on a single photo and represent approximately 54 degree horizontal field of view.
- This view is approximately 58 feet south of the nearest pole represented in the simulation.
- The simulation is based on the best information available and is preliminary. Final alignment and structure locations are subject to change based on final engineering and other factors.

Rio Rico to Harshaw 138kV Transmission Line Project

Key Observation Point (KOP) #7



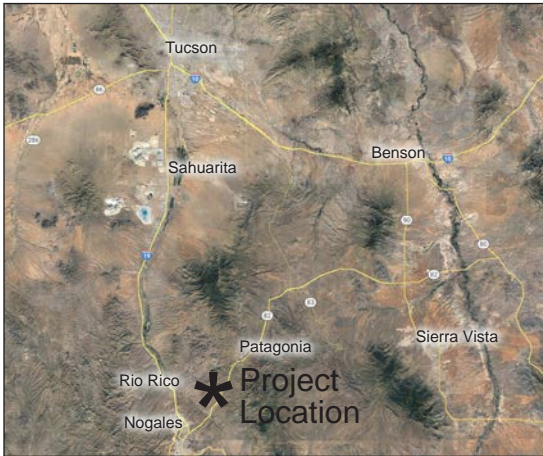
Existing Condition



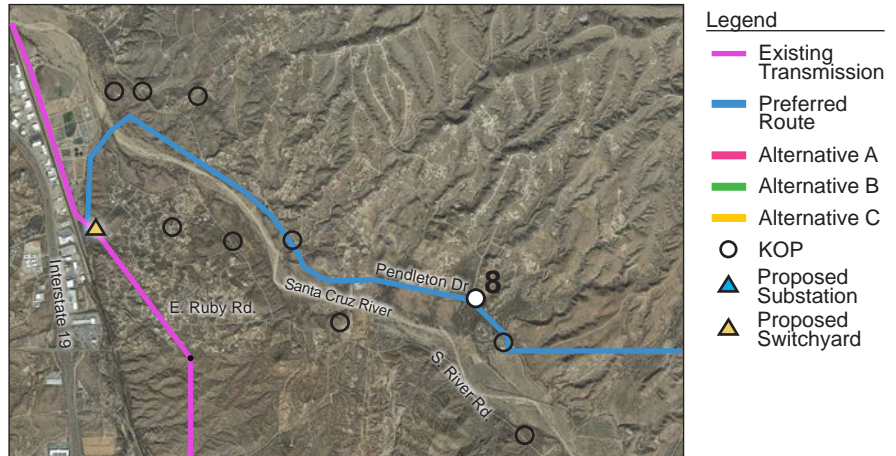
Simulated Condition

Rio Rico to Harshaw 138kV Transmission Line Project

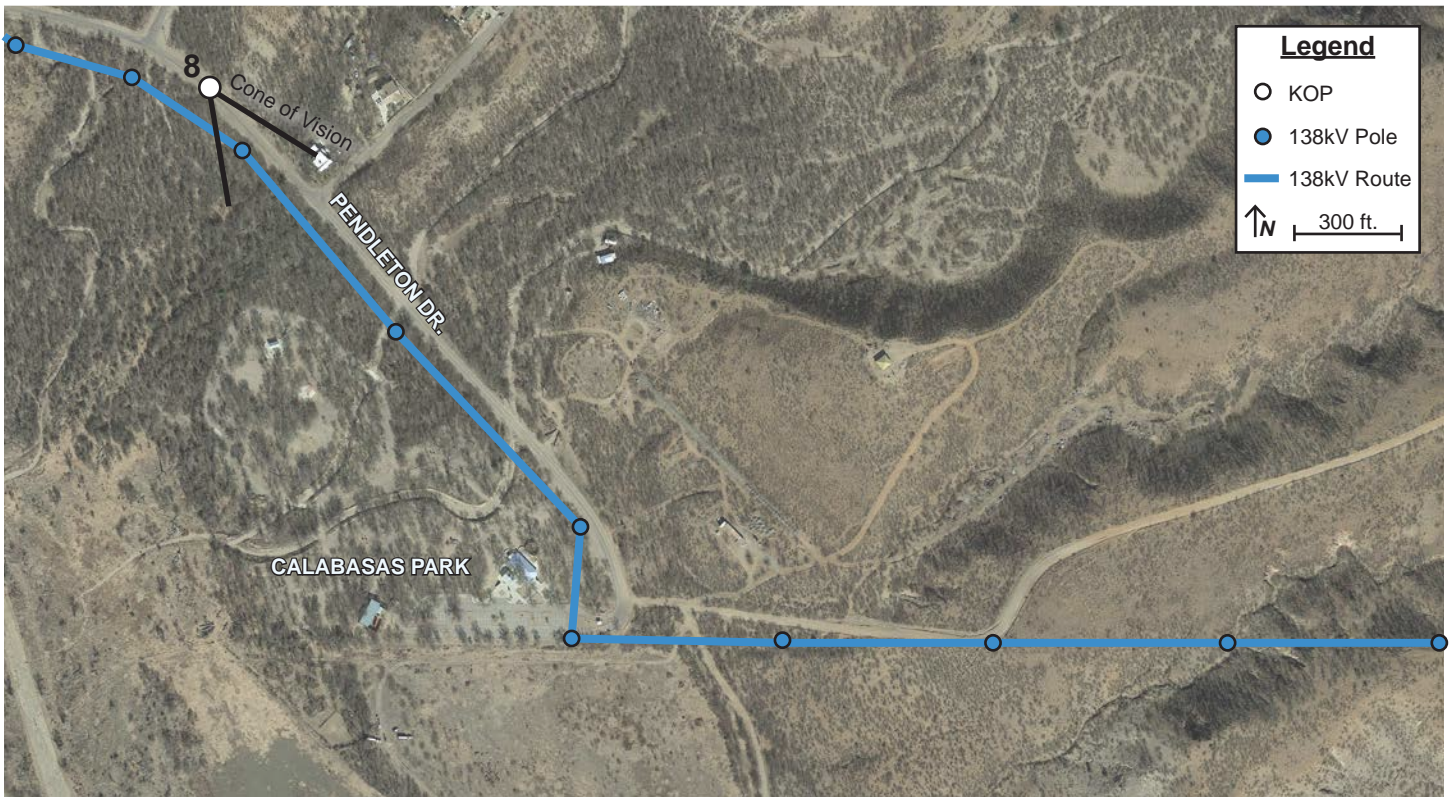
Key Observation Point (KOP) # 8



Vicinity Map



Project Map Enlargement



Notes:

Camera Information

- Type: Canon EOS RP
- Sensor: CMOS (Full-Frame) 35.9mm x 24mm
- Lens: Canon RF 24-105mm f/4-7.1 IS STM
- Focal Length: 35mm | F-Stop: f/9 | ISO:100
- Dimensions in pixel: 6240 x 4160

KOP

- Representative View for: residents and recreational users
- Location: 576 Pendleton Drive
- Latitude: 31.434022° N; Longitude: 110.922496° W
- View Point Elevation at Eye Level: 3,543 ft.
- Looking: south southeast
- Poles Visible: Structures
- Image File Name: IMG_1288.JPG

Simulation Notes

- Photo Taken: August 12, 2022, at 11:34 am
- The image is based on a single photo and represent approximately 39.5 degree horizontal field of view.
- This view is approximately 250 feet northwest of the nearest pole represented in the simulation.
- The simulation is based on the best information available and is preliminary. Final alignment and structure locations are subject to change based on final engineering and other factors.

Rio Rico to Harshaw 138kV Transmission Line Project

Key Observation Point (KOP) #8



Existing Condition



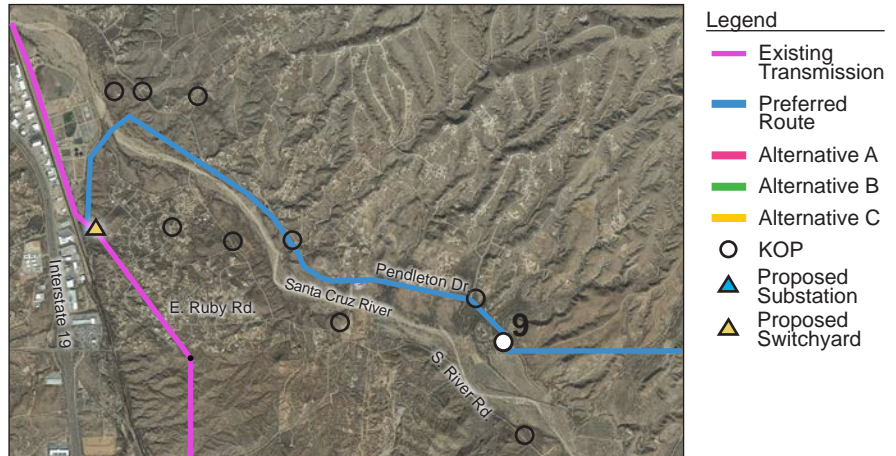
Simulated Condition

Rio Rico to Harshaw 138kV Transmission Line Project

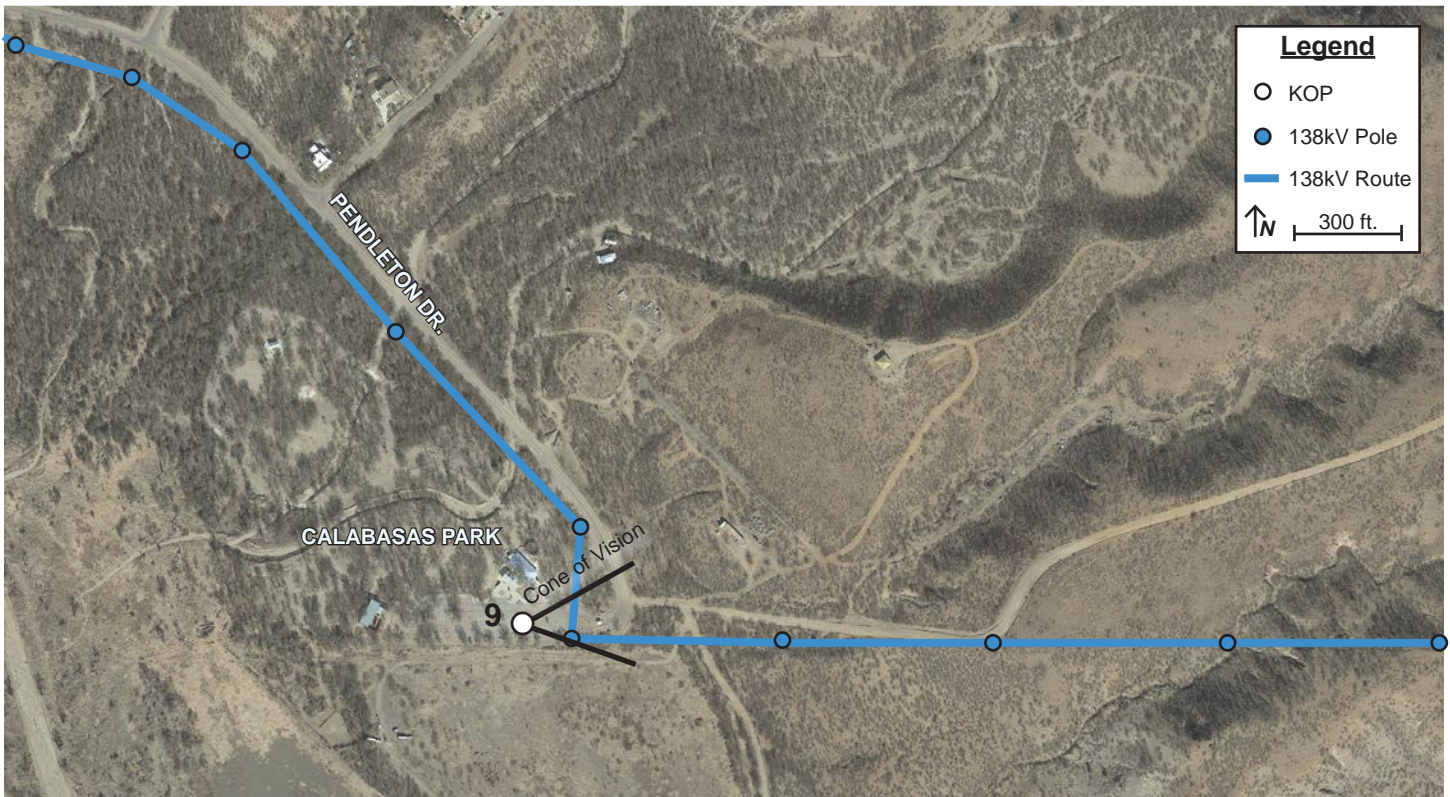
Key Observation Point (KOP) # 9



Vicinity Map



Project Map Enlargement



Notes:

Camera Information

- Type: Canon EOS RP
- Sensor: CMOS (Full-Frame) 35.9mm x 24mm
- Lens: Canon RF 24-105mm f/4-7.1 IS STM
- Focal Length: 24mm | F-Stop: f/10 | ISO:100
- Dimensions in pixel: 6240 x 4160

KOP

- Representative View for: recreational users
- Location: Calabasas Park
- Latitude: 31.429911° N; Longitude: 110.919970° W
- View Point Elevation at Eye Level: 3,537 ft.
- Looking: east
- Poles Visible: Structures
- Image File Name: IMG_1292.JPG

Simulation Notes

- Photo Taken: August 12, 2022, at 11:37 am
- The image is based on a single photo and represent approximately 73.7 degree horizontal field of view.
- This view is approximately 217 feet west of the nearest pole represented in the simulation.
- The simulation is based on the best information available and is preliminary. Final alignment and structure locations are subject to change based on final engineering and other factors.

Rio Rico to Harshaw 138kV Transmission Line Project

Key Observation Point (KOP) #9



Existing Condition



Simulated Condition

Rio Rico to Harshaw 138kV Transmission Line Project

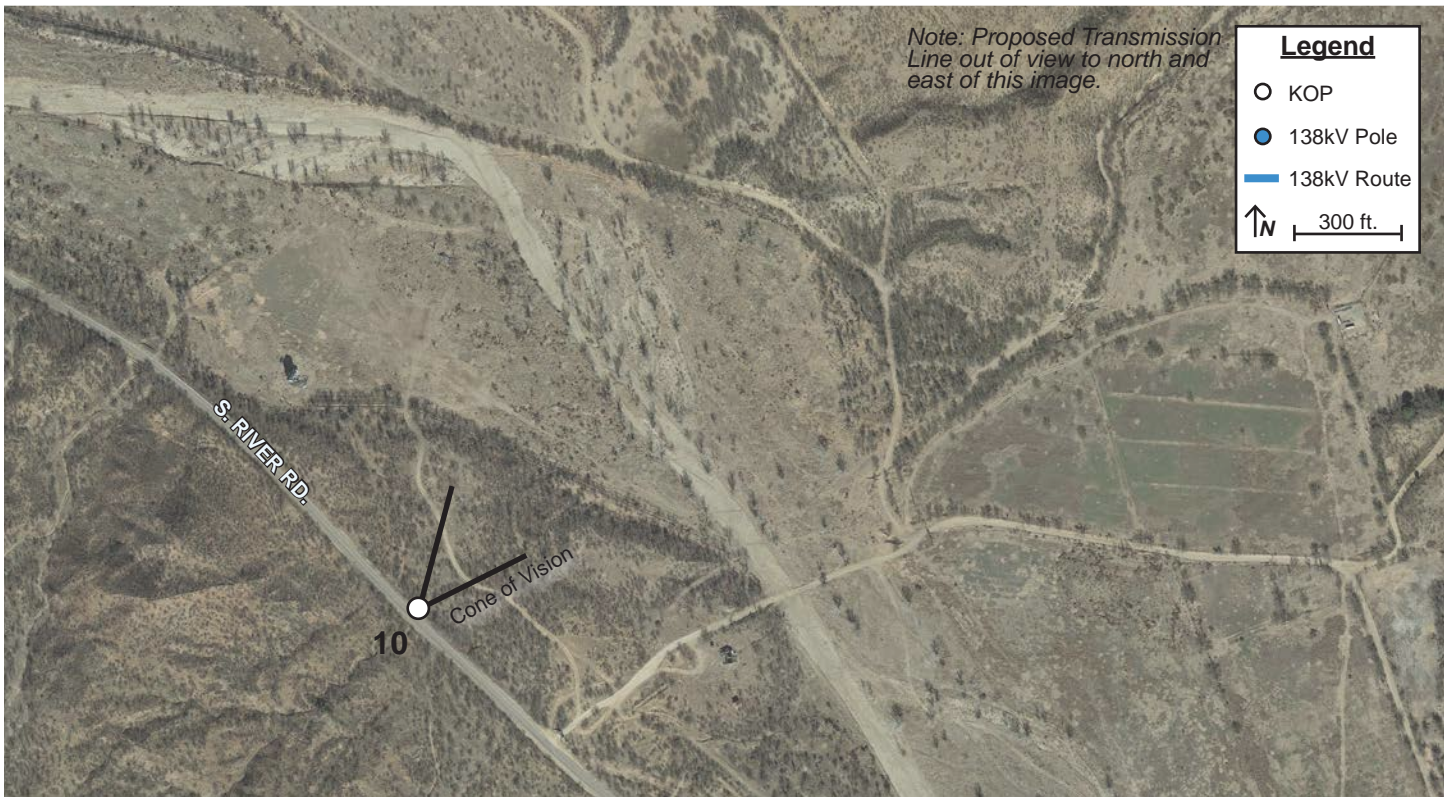
Key Observation Point (KOP) # 10



Vicinity Map



Project Map Enlargement



Notes:

Camera Information

- Type: Canon EOS RP
- Sensor: CMOS (Full-Frame) 35.9mm x 24mm
- Lens: Canon RF 24-105mm f/4-7.1 IS STM
- Focal Length: 35mm | F-Stop: f/9 | ISO:100
- Dimensions in pixel: 6240 x 4160

KOP

- Representative View for: recreational, tourists, residents
- Location: 1574 South River Road
- Latitude: 31.421225° N; Longitude: 110.916266° W
- View Point Elevation at Eye Level: 3,568 ft.
- Looking: northeast
- Poles Visible: Structures
- Image File Name: IMG_1202.JPG

Simulation Notes

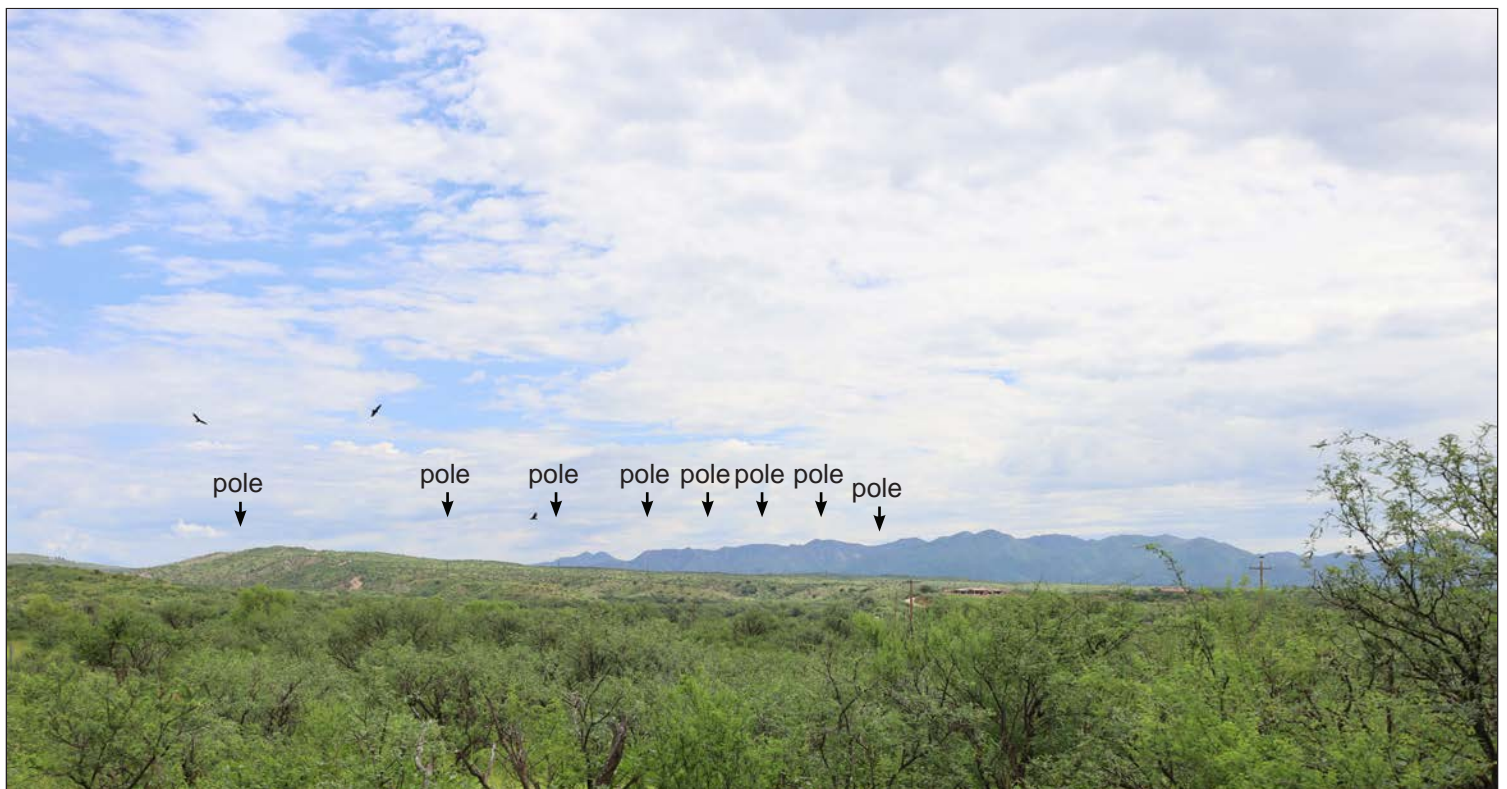
- Photo Taken: August 12, 2022, at 10:55 am
- The image is based on a single photo and represent approximately 54 degree horizontal field of view.
- This view is approximately 3,991 feet southwest of the nearest pole represented in the simulation.
- The simulation is based on the best information available and is preliminary. Final alignment and structure locations are subject to change based on final engineering and other factors.

Rio Rico to Harshaw 138kV Transmission Line Project

Key Observation Point (KOP) #10



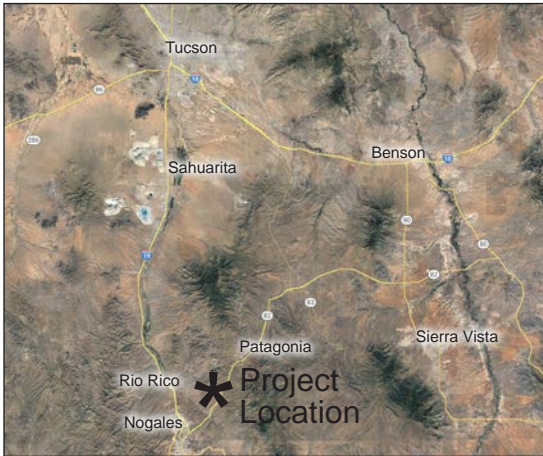
Existing Condition



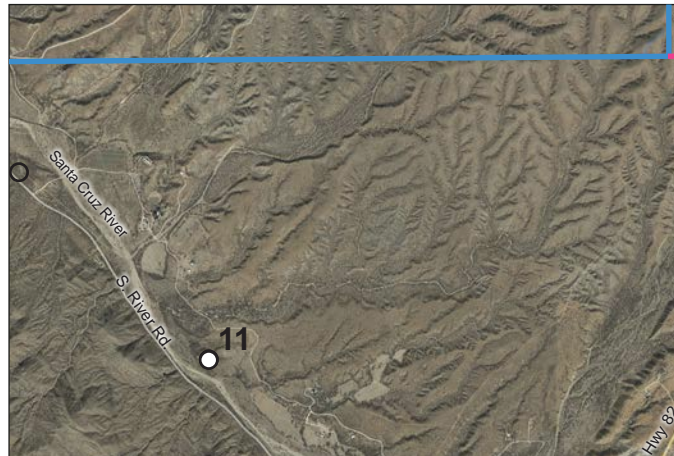
Simulated Condition

Rio Rico to Harshaw 138kV Transmission Line Project

Key Observation Point (KOP) # 11



Vicinity Map



Project Map Enlargement

- Legend**
- Existing Transmission
 - Preferred Route
 - Alternative A
 - Alternative B
 - Alternative C
 - KOP
 - Proposed Substation
 - Proposed Switchyard



Notes:

Camera Information

- Type: Canon EOS RP
- Sensor: CMOS (Full-Frame) 35.9mm x 24mm
- Lens: Canon RF 24-105mm f/4-7.1 IS STM
- Focal Length: 50mm | F-Stop: f/6.3 | ISO:100
- Dimensions in pixel: 6240 x 4160

KOP

- Representative View for: visitors of the National Historic Site
- Location: Mission Los Santos Angeles de Guevavi NHS
- Latitude: 31.410080° N; Longitude: 110.901834° W
- View Point Elevation at Eye Level: 3,595 ft.
- Looking: northeast
- Poles Visible: Steel Monopole Structures
- Image File Name: IMG_1821.JPG

Simulation Notes

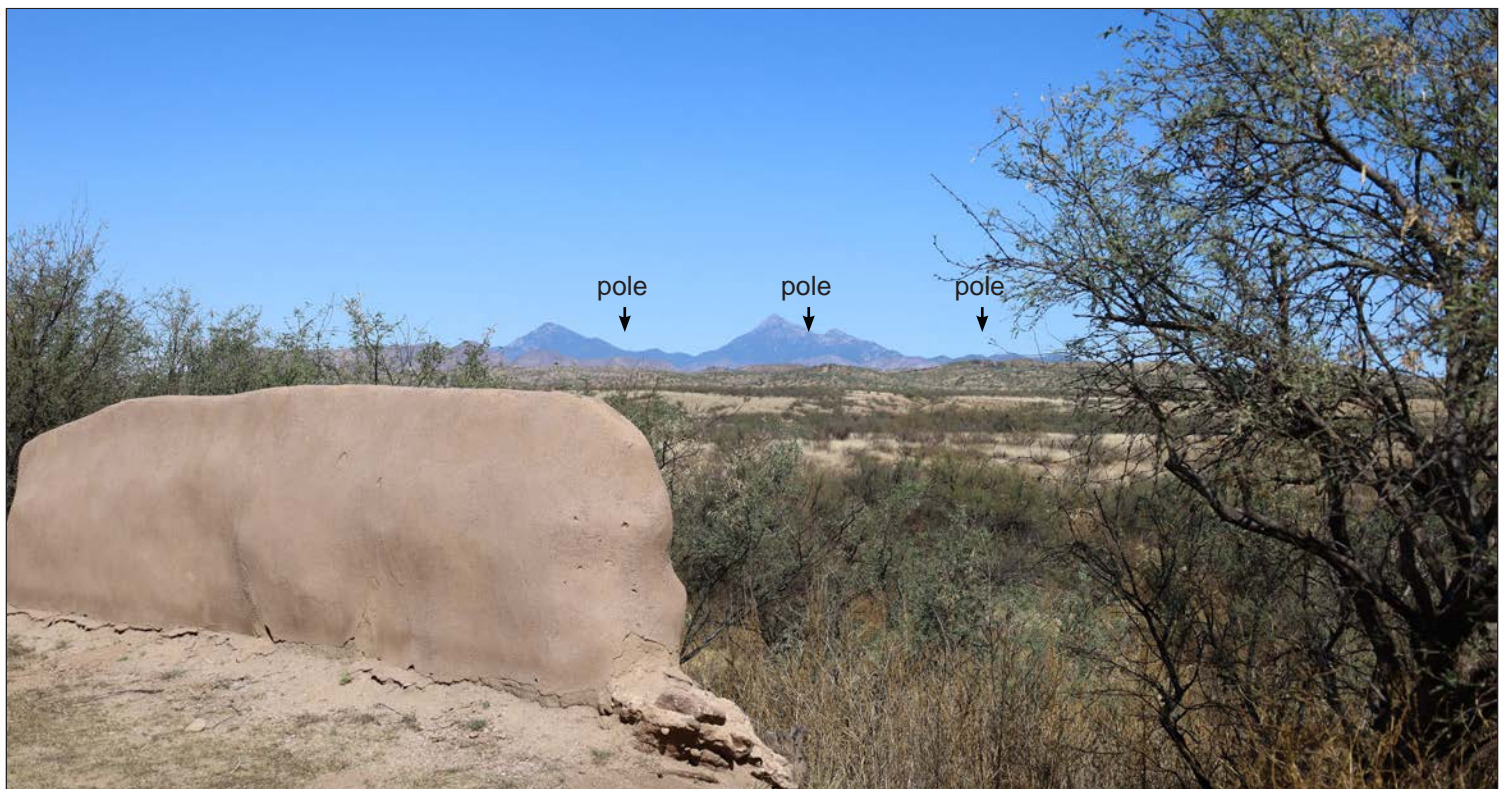
- Photo Taken: November 7, 2022 at 12:14 pm
- The image is based on a single photo and represent approximately 39.5 degree horizontal field of view.
- This view is approximately 7,831 feet southwest of the nearest pole represented in the simulation.
- The simulation is based on the best information available and is preliminary. Final alignment and structure locations are subject to change based on final engineering and other factors.

Rio Rico to Harshaw 138kV Transmission Line Project

Key Observation Point (KOP) #11



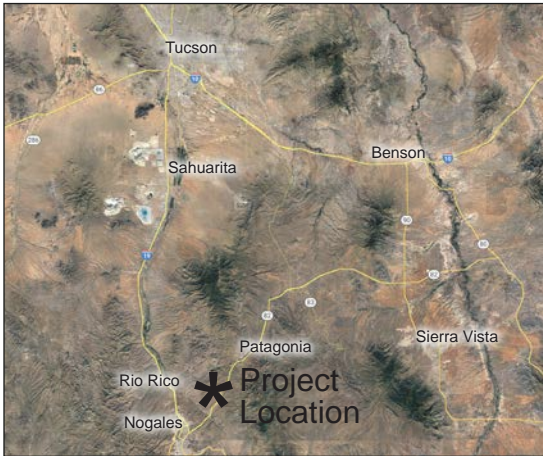
Existing Condition



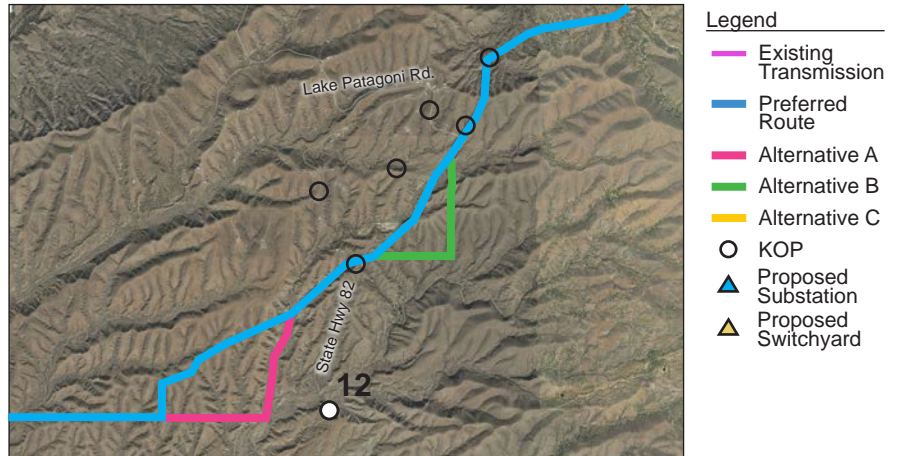
Simulated Condition

Rio Rico to Harshaw 138kV Transmission Line Project

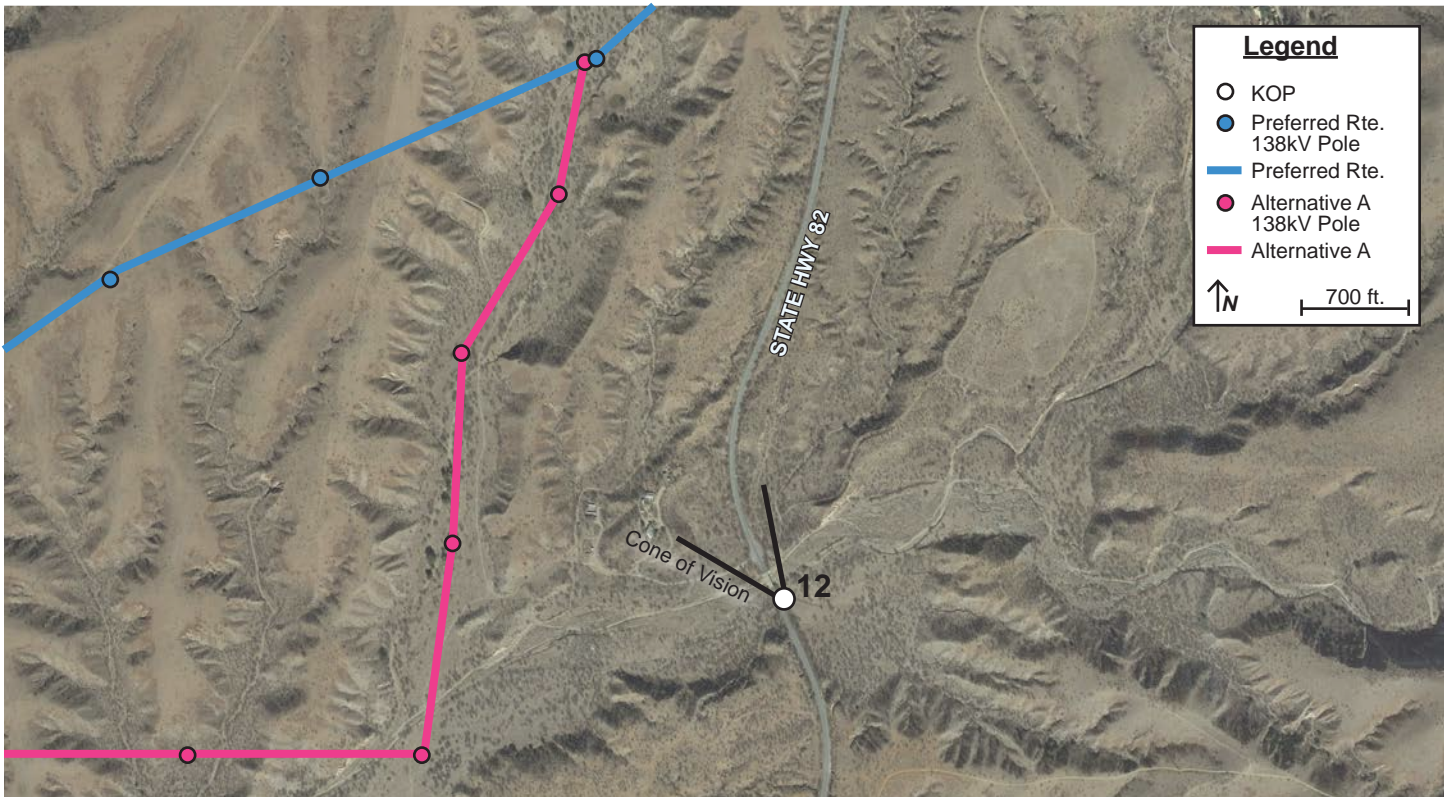
Key Observation Point (KOP) # 12



Vicinity Map



Project Map Enlargement



Notes:

Camera Information

- Type: Canon EOS RP
- Sensor: CMOS (Full-Frame) 35.9mm x 24mm
- Lens: Canon RF 24-105mm f/4-7.1 IS STM
- Focal Length: 50mm | F-Stop: f/9 | ISO:100
- Dimensions in pixel: 6240 x 4160

KOP

- Representative View for: recreational, tourists, residents
- Location: East Patagonia Highway
- Latitude: 31.430765° N; Longitude: 110.842494° W
- View Point Elevation at Eye Level: 3,926 ft.
- Looking: northwest
- Poles Visible: Structures
- Image File Name: IMG_1363.JPG

Simulation Notes

- Photo Taken: August 12, 2022, at 2:07 pm
- The image is based on a single photo and represent approximately 39.5 degree horizontal field of view.
- This view is approximately 3,516 feet southeast of the nearest pole represented in the simulation.
- The simulation is based on the best information available and is preliminary. Final alignment and structure locations are subject to change based on final engineering and other factors.

Rio Rico to Harshaw 138kV Transmission Line Project

Key Observation Point (KOP) #12



Existing Condition



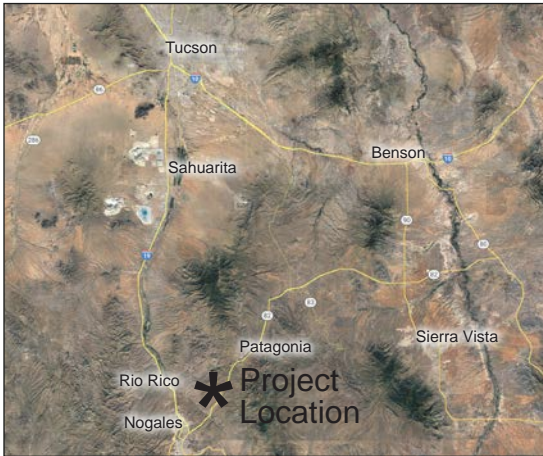
Simulated Condition - Preferred Route



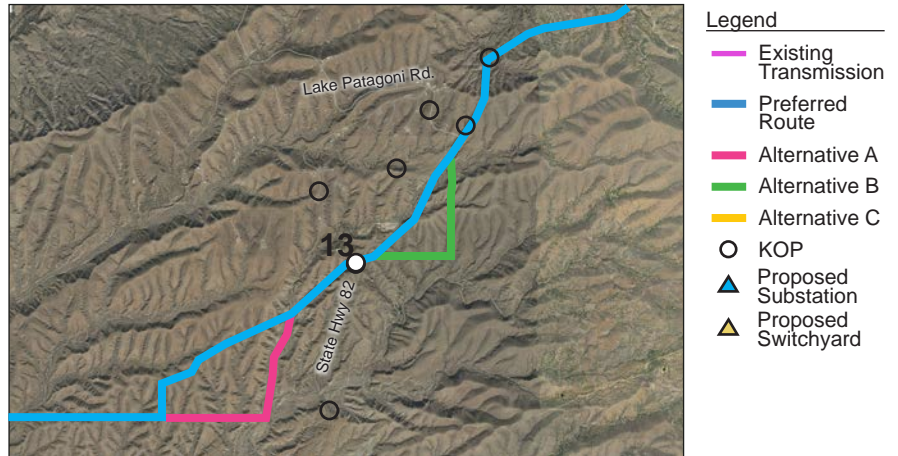
Simulated Condition - Alternative Route A

Rio Rico to Harshaw 138kV Transmission Line Project

Key Observation Point (KOP) # 13



Vicinity Map



Project Map Enlargement



Notes:

Camera Information

- Type: Canon EOS RP
- Sensor: CMOS (Full-Frame) 35.9mm x 24mm
- Lens: Canon RF 24-105mm f/4-7.1 IS STM
- Focal Length: 37mm | F-Stop: f/10 | ISO:100
- Dimensions in pixel: 6240 x 4160

KOP

- Representative View for: residents, recreational users
- Location: State Highway 82
- Latitude: 31.448761° N; Longitude: 110.838409° W
- View Point Elevation at Eye Level: 4,102 ft.
- Looking: northeast
- Poles Visible: Structures
- Image File Name: IMG_1371.JPG

Simulation Notes

- Photo Taken: August 12, 2022, at 2:11 pm
- The image is based on a single photo and represent approximately 54 degree horizontal field of view.
- This view is approximately 839 feet southwest of the nearest pole represented in the simulation.
- The simulation is based on the best information available and is preliminary. Final alignment and structure locations are subject to change based on final engineering and other factors.

Rio Rico to Harshaw 138kV Transmission Line Project

Key Observation Point (KOP) #13



Existing Condition



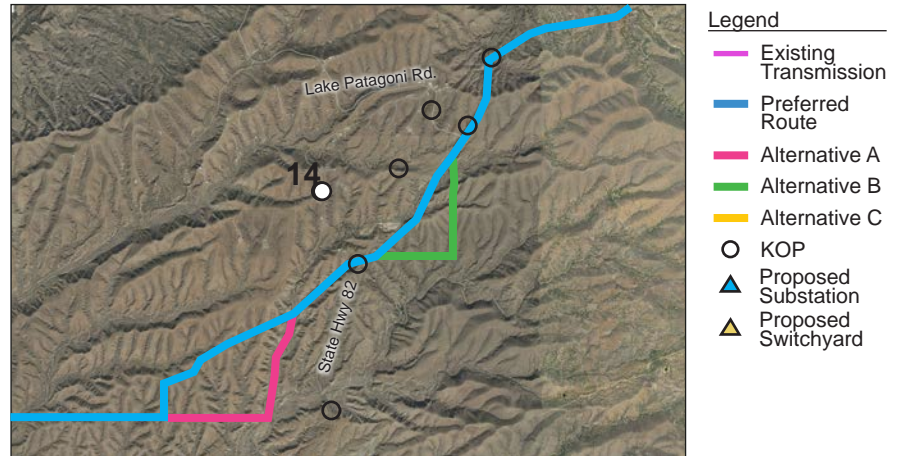
Simulated Condition

Rio Rico to Harshaw 138kV Transmission Line Project

Key Observation Point (KOP) # 14



Vicinity Map



Project Map Enlargement



Notes:

Camera Information

- Type: Iphone 12 Pro
- Sensor: Apple 12 MP 1/3.6-inch sensor
- Lens: Apple 26 mm-equivalent f/1.6 lens
- Focal Length: 4mm(26mm equivalent) | F-Stop: f/1.6 | ISO:32
- Dimensions in pixel: 4032 x 3024

KOP

- Representative View for: residents
- Location: 161 Lado De Loma Dr.
- Latitude: 31.457460° N; Longitude: 110.843947° W
- View Point Elevation at Eye Level: 4,151 ft.
- Looking: southeast
- Poles Visible: Structures
- Image File Name: IMG_4902.JPG

Simulation Notes

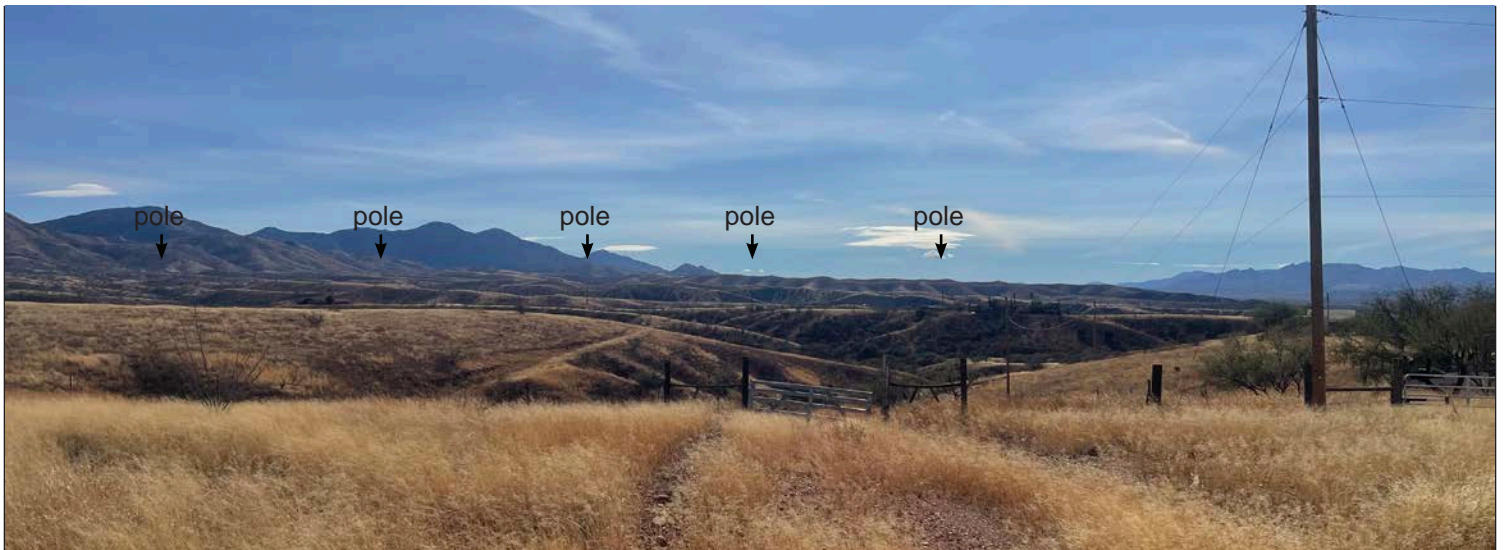
- Photo Taken: December 2, 2022, at 10:58 am
- The image is based on a single photo and represent approximately 71 degree horizontal field of view.
- This view is approximately 3,395 feet northwest of the nearest pole represented in the simulation.
- The simulation is based on the best information available and is preliminary. Final alignment and structure locations are subject to change based on final engineering and other factors.

Rio Rico to Harshaw 138kV Transmission Line Project

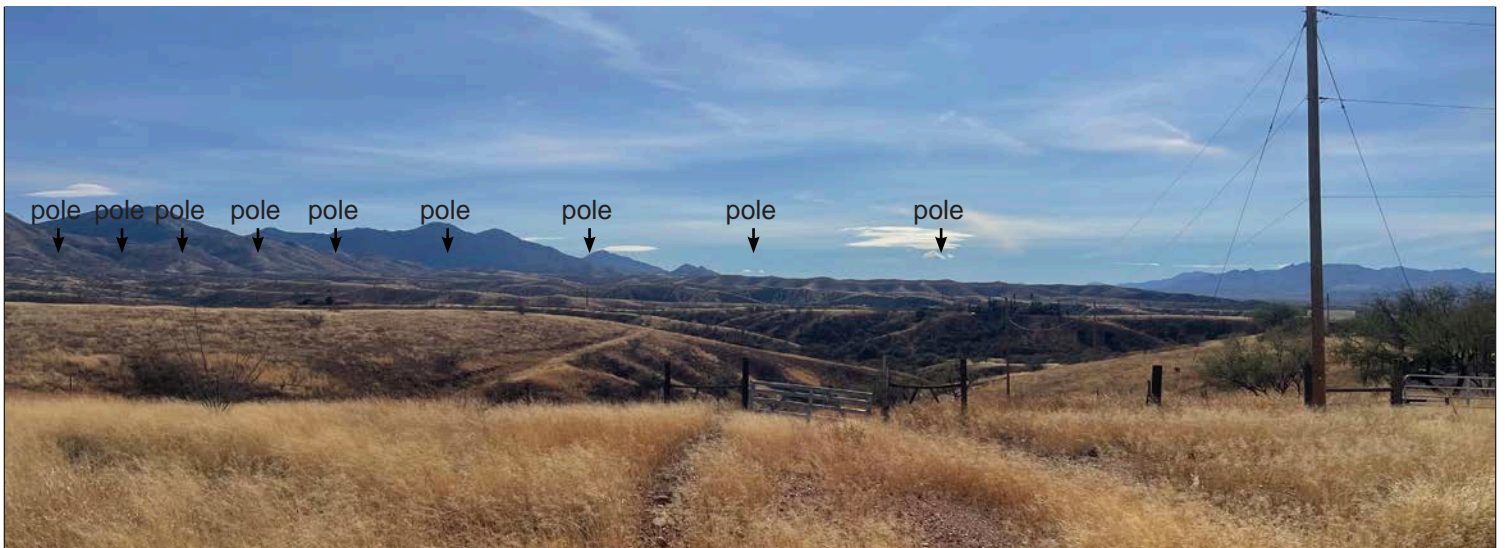
Key Observation Point (KOP) #14



Existing Condition



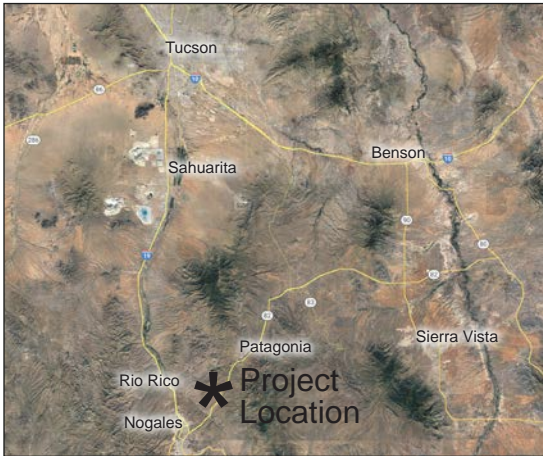
Simulated Condition - Preferred Route



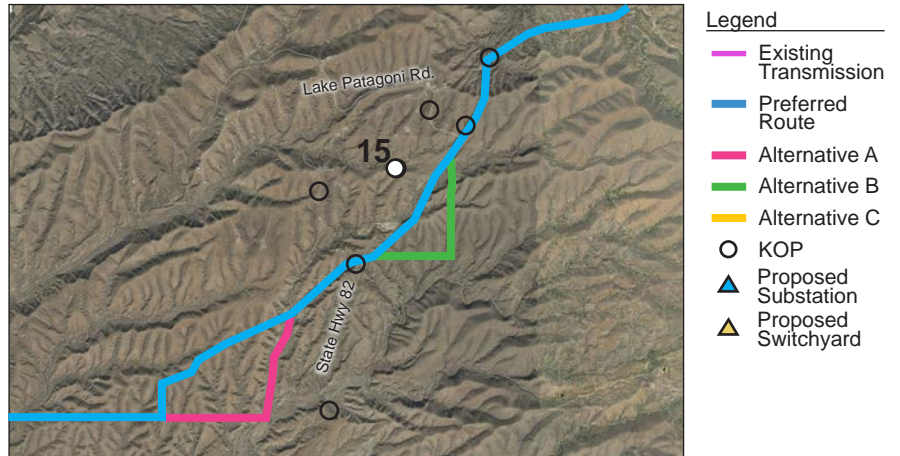
Simulated Condition - Alternative Route B

Rio Rico to Harshaw 138kV Transmission Line Project

Key Observation Point (KOP) # 15



Vicinity Map



Project Map Enlargement



Notes:

Camera Information

- Type: Iphone 12 Pro
- Sensor: Apple 12 MP 1/3.6-inch sensor
- Lens: Apple 26 mm-equivalent f/1.6 lens
- Focal Length: 4mm(26mm equivalent) | F-Stop: f/1.6 | ISO:32
- Dimensions in pixel: 4032 x 3024

KOP

- Representative View for: residents
- Location: Primitive Road
- Latitude: 31.460193° N; Longitude: 110.832784° W
- View Point Elevation at Eye Level: 4,221 ft.
- Looking: southeast
- Poles Visible: Structures
- Image File Name: IMG_4906.JPG

Simulation Notes

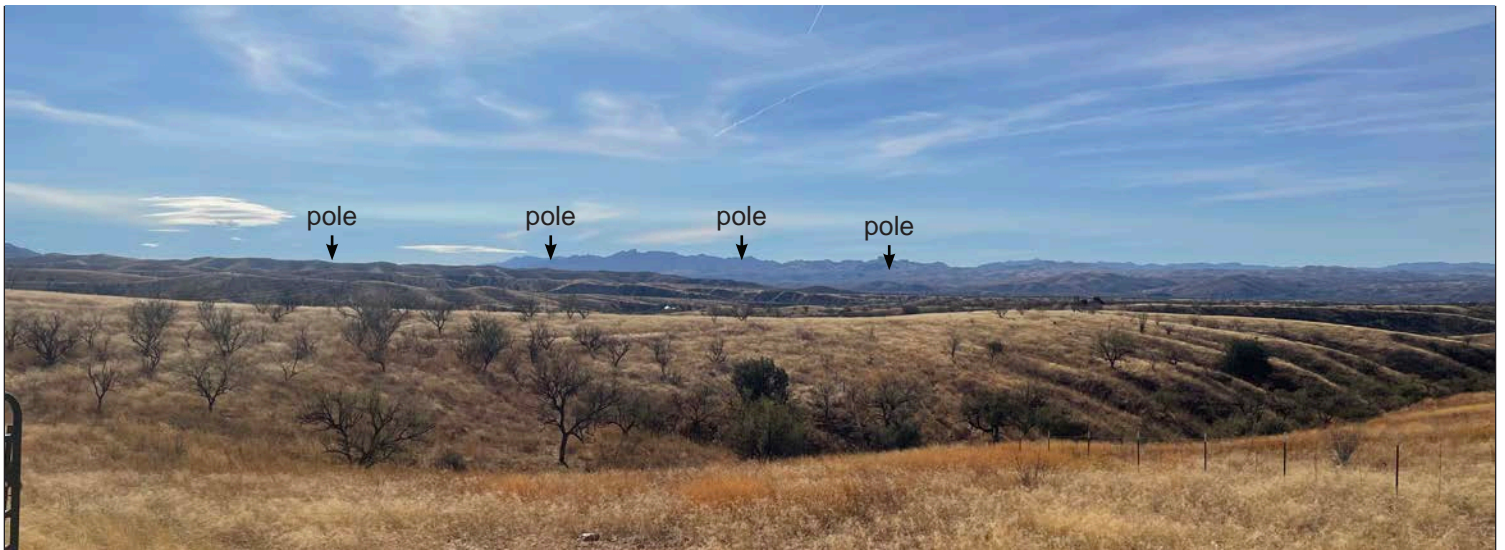
- Photo Taken: December 2, 2022, at 11:09 am
- The image is based on a single photo and represent approximately 71 degree horizontal field of view.
- This view is approximately 1,713 feet northwest of the nearest pole represented in the simulation.
- The simulation is based on the best information available and is preliminary. Final alignment and structure locations are subject to change based on final engineering and other factors.

Rio Rico to Harshaw 138kV Transmission Line Project

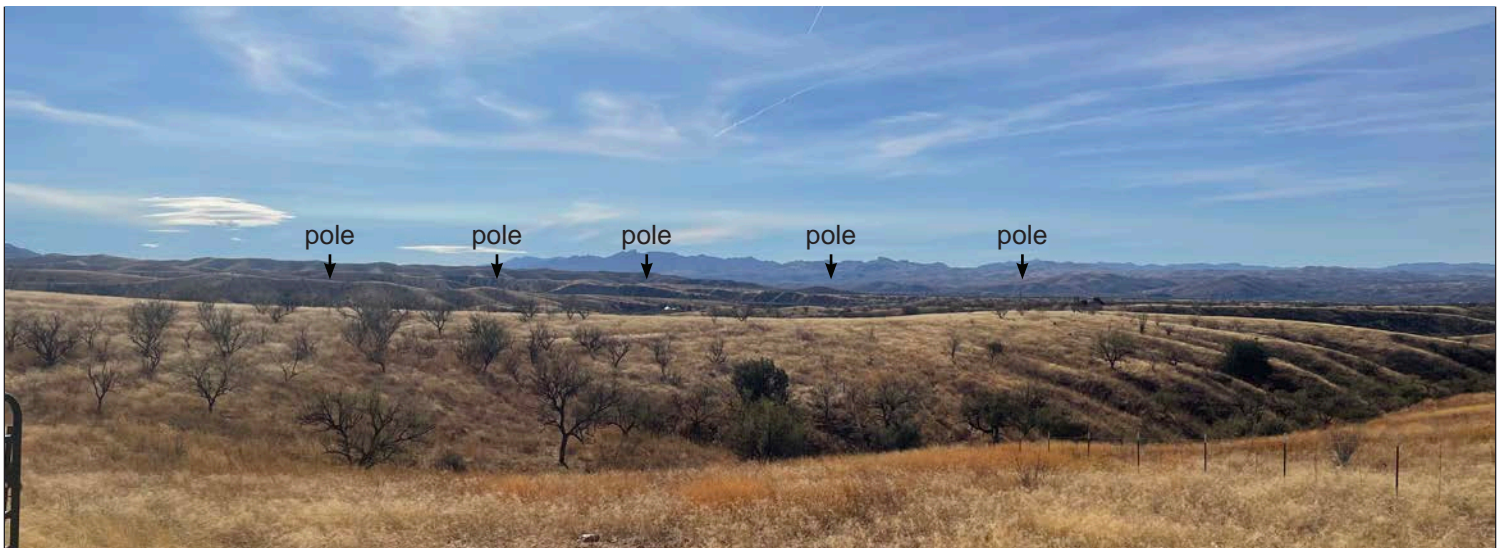
Key Observation Point (KOP) #15



Existing Condition



Simulated Condition - Preferred Route



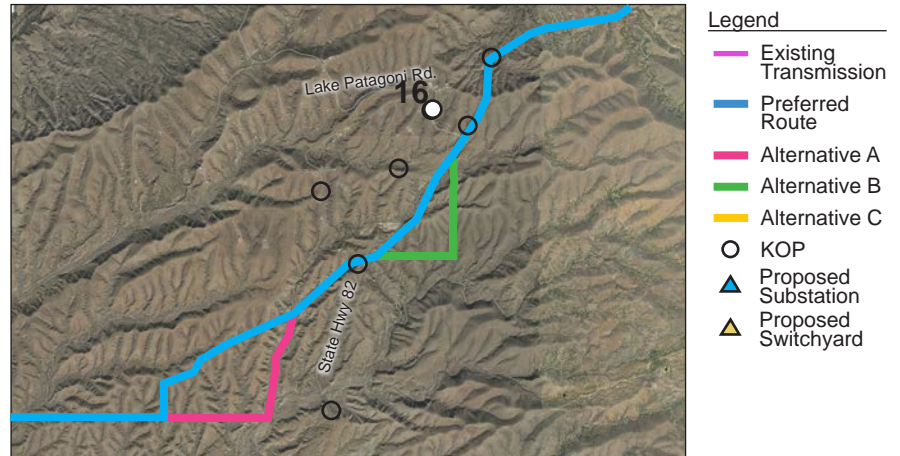
Simulated Condition - Alternative Route B

Rio Rico to Harshaw 138kV Transmission Line Project

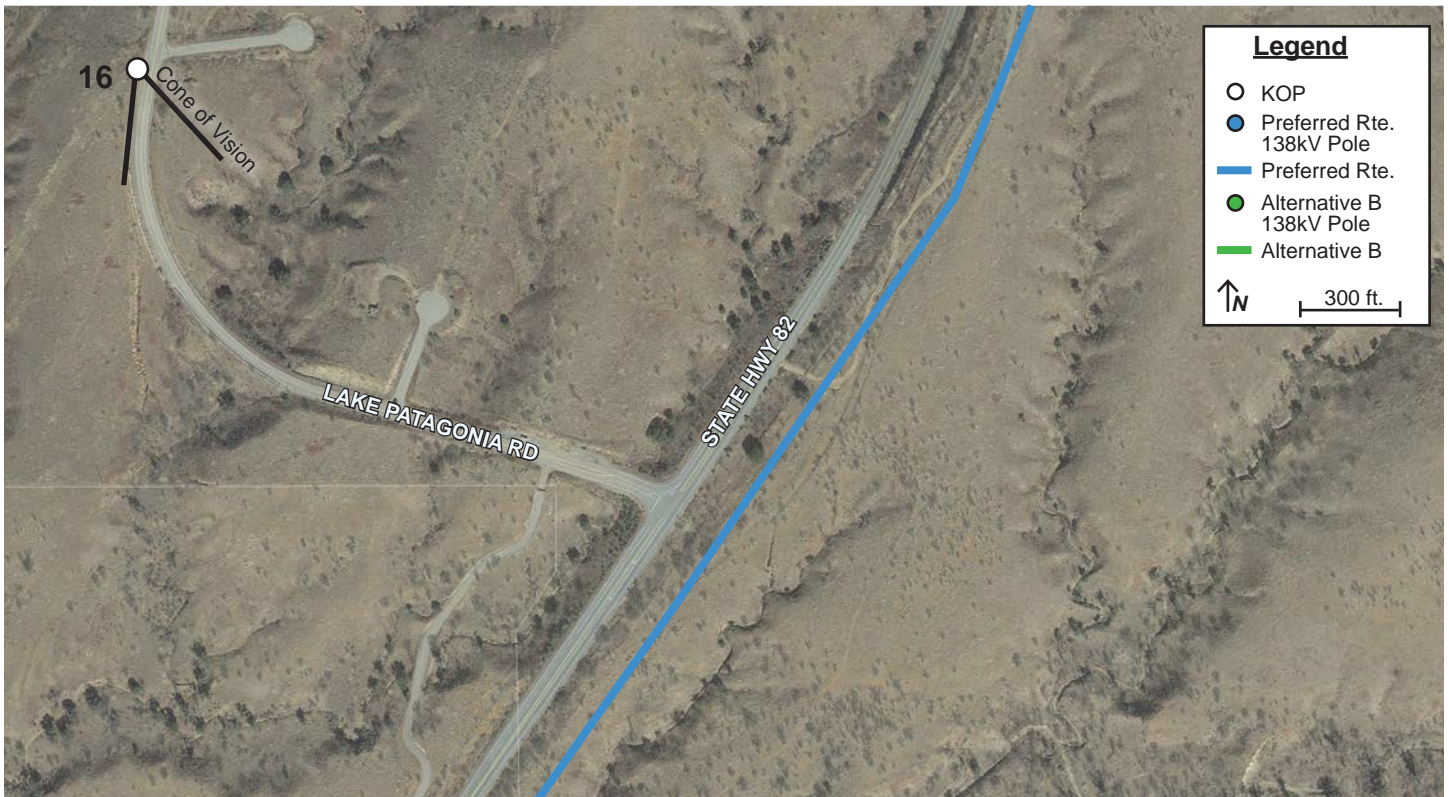
Key Observation Point (KOP) # 16



Vicinity Map



Project Map Enlargement



Notes:

Camera Information

- Type: Iphone 12 Pro
- Sensor: Apple 12 MP 1/3.6-inch sensor
- Lens: Apple 26 mm-equivalent f/1.6 lens
- Focal Length: 4mm(26mm equivalent) | F-Stop: f/1.6 | ISO:32
- Dimensions in pixel: 4032 x 3024

KOP

- Representative View for: residents and recreational users
- Location: 31 Lake Patagonia Road
- Latitude: 31.467340° N; Longitude: 110.828051° W
- View Point Elevation at Eye Level: 4,272 ft.
- Looking: south southeast
- Poles Visible: Structures
- Image File Name: IMG_4904.JPG

Simulation Notes

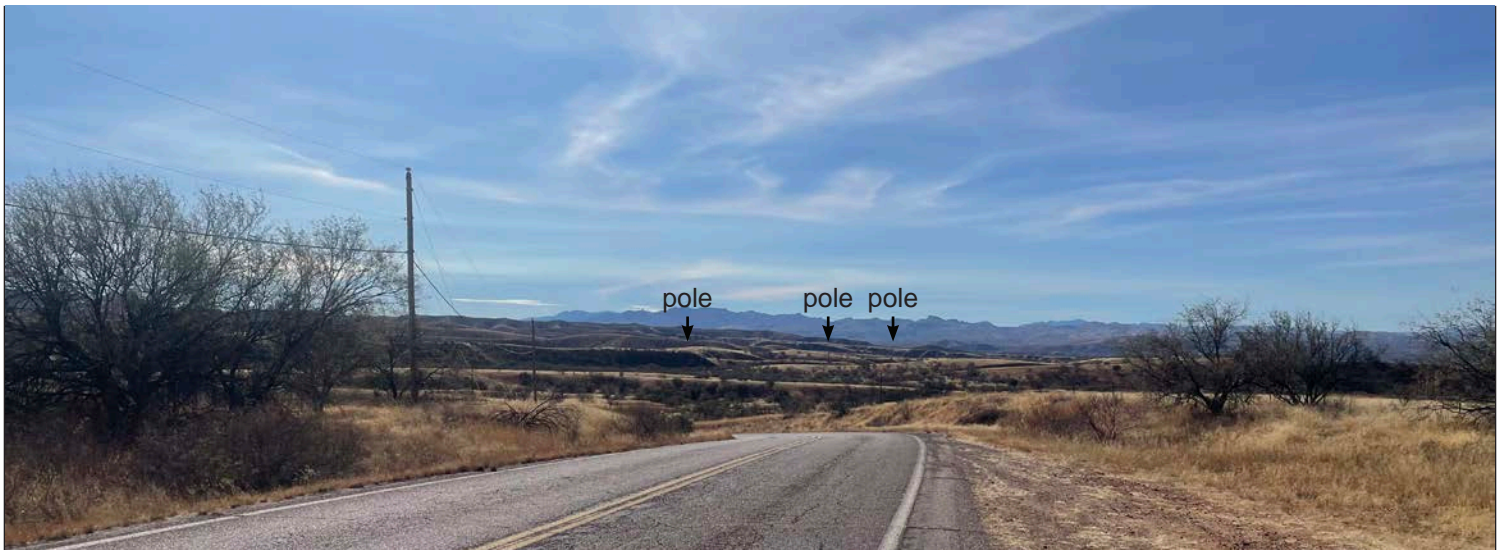
- Photo Taken: December 2, 2022, at 11:04 am
- The image is based on a single photo and represent approximately 71 degree horizontal field of view.
- This view is approximately 2,397 feet north northwest of the nearest pole represented in the simulation.
- The simulation is based on the best information available and is preliminary. Final alignment and structure locations are subject to change based on final engineering and other factors.

Rio Rico to Harshaw 138kV Transmission Line Project

Key Observation Point (KOP) #16



Existing Condition



Simulated Condition - Preferred Route



Simulated Condition - Alternative Route B

Rio Rico to Harshaw 138kV Transmission Line Project

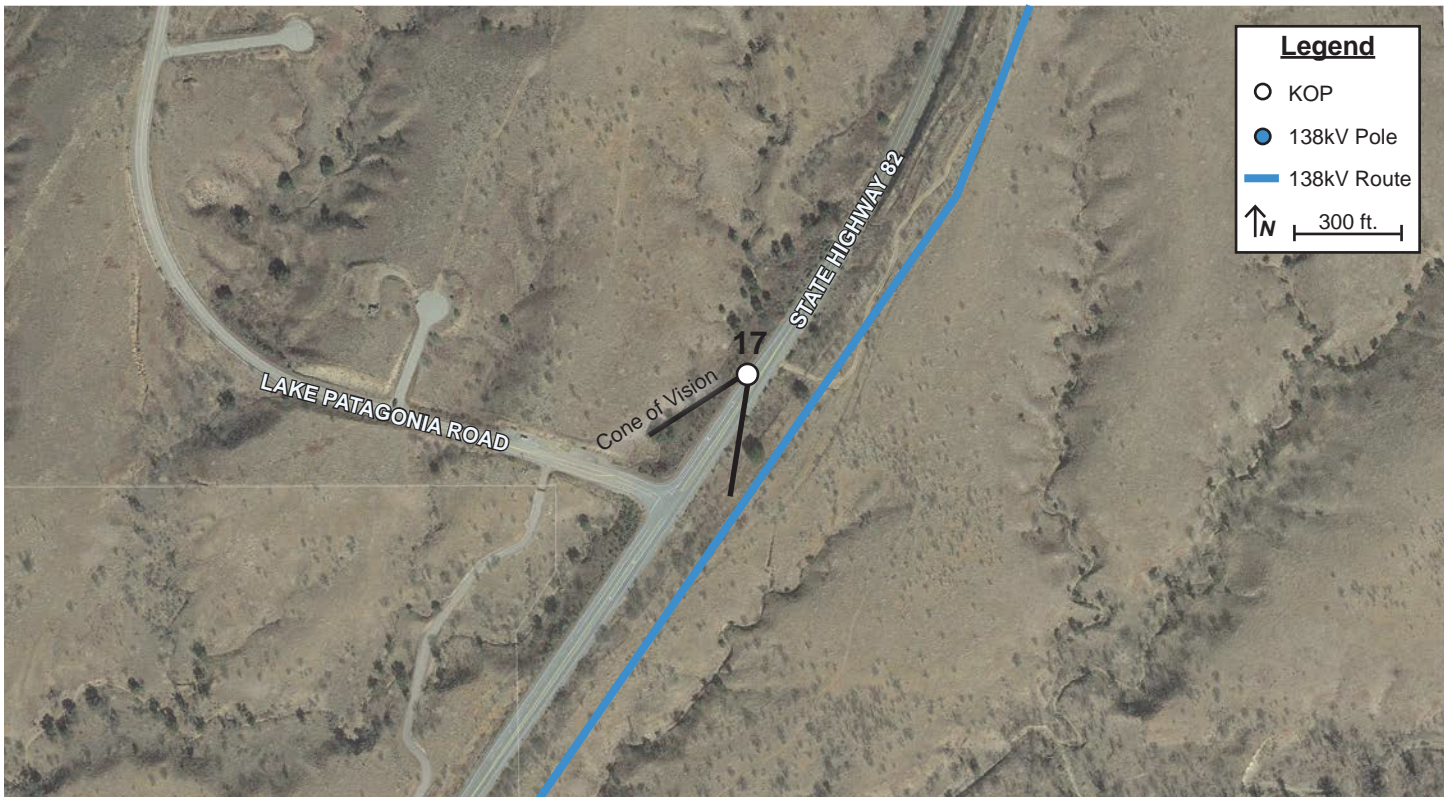
Key Observation Point (KOP) # 17



Vicinity Map



Project Map Enlargement



Notes:

Camera Information

- Type: Canon EOS RP
- Sensor: CMOS (Full-Frame) 35.9mm x 24mm
- Lens: Canon RF 24-105mm f/4-7.1 IS STM
- Focal Length: 35mm | F-Stop: f/7.1 | ISO:100
- Dimensions in pixel: 6240 x 4160

KOP

- Representative View for: residents and recreationalists
- Location: East Patagonia Hwy @ Lake Patagonia Road
- Latitude: 31.465274° N; Longitude: 110.823169° W
- View Point Elevation at Eye Level: 4,234 ft.
- Looking: southwest
- Poles Visible: Structures
- Image File Name: IMG_1412.JPG

Simulation Notes

- Photo Taken: August 12, 2022, at 2:28 pm
- The image is based on a single photo and represent approximately 54 degree horizontal field of view.
- This view is approximately 350 feet north of the nearest pole represented in the simulation.
- The simulation is based on the best information available and is preliminary. Final alignment and structure locations are subject to change based on final engineering and other factors.

Rio Rico to Harshaw 138kV Transmission Line Project

Key Observation Point (KOP) #17



Existing Condition



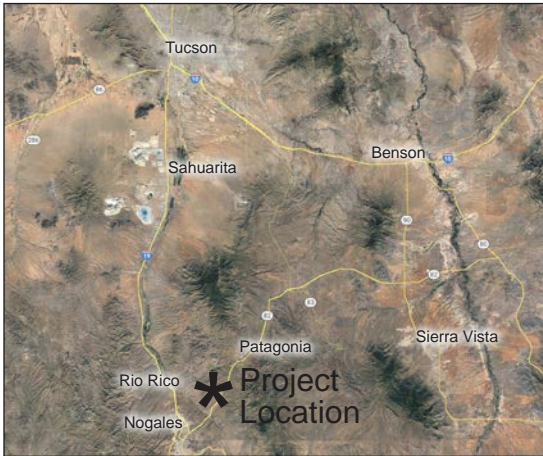
Simulated Condition - Preferred Route



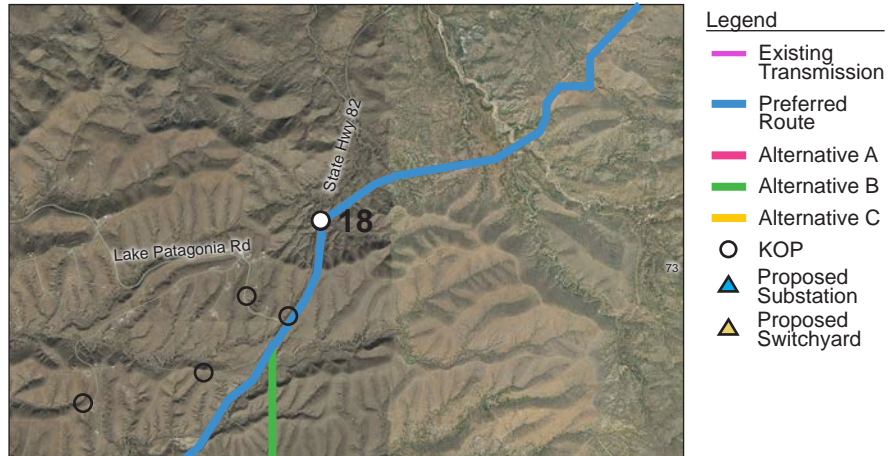
Simulated Condition - Alternative Route B

Rio Rico to Harshaw 138kV Transmission Line Project

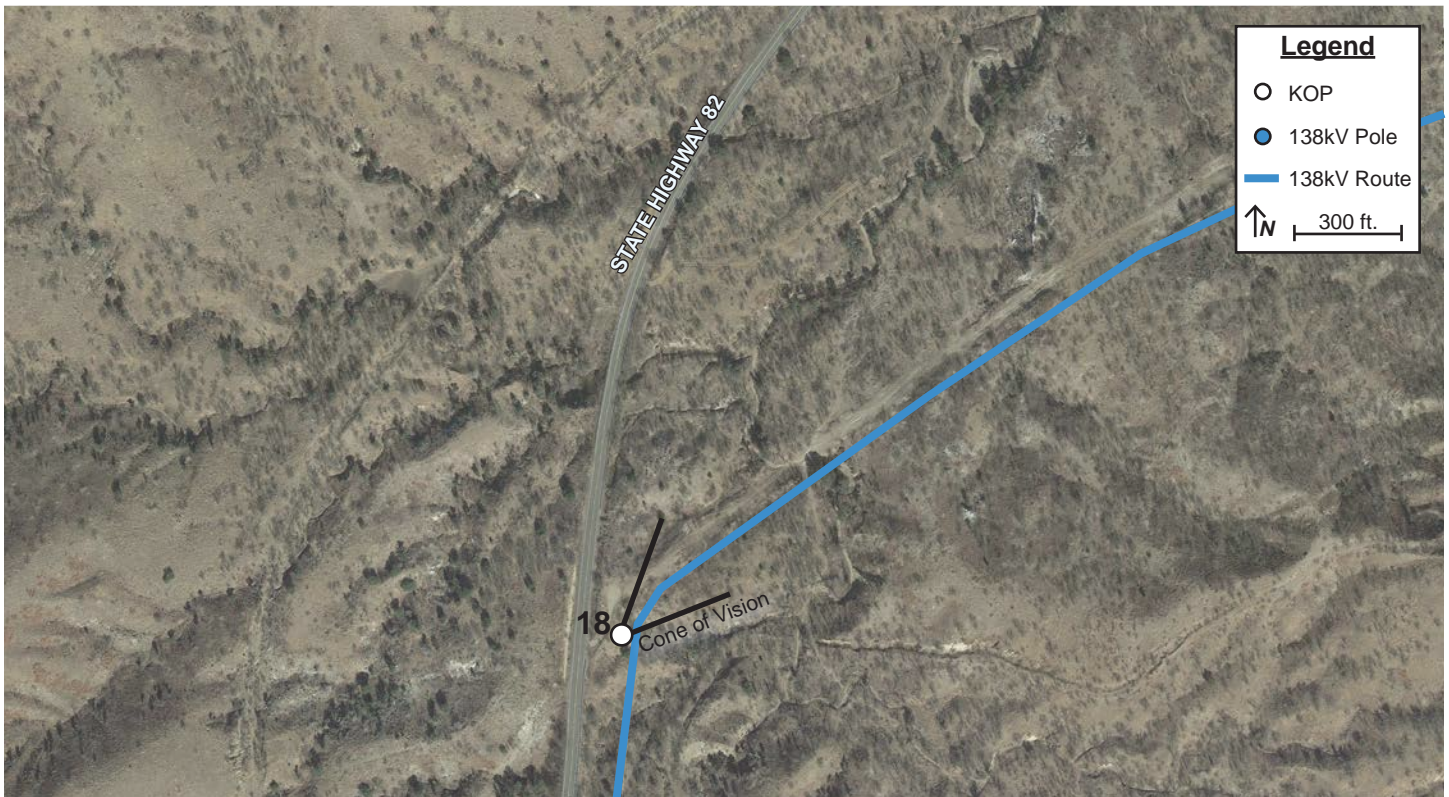
Key Observation Point (KOP) # 18



Vicinity Map



Project Map Enlargement



Notes:

Camera Information

- Type: Canon EOS RP
- Sensor: CMOS (Full-Frame) 35.9mm x 24mm
- Lens: Canon RF 24-105mm f/4-7.1 IS STM
- Focal Length: 50mm | F-Stop: f/9 | ISO:100
- Dimensions in pixel: 6240 x 4160

KOP

- Representative View for: recreationalists and tourists
- Location: East Patagonia Hwy @ El Paso Gas Easement
- Latitude: 31.473641° N; Longitude: 110.820149° W
- View Point Elevation at Eye Level: 4,144 ft.
- Looking: northeast
- Poles Visible: Structures
- Image File Name: IMG_1379.JPG

Simulation Notes

- Photo Taken: August 12, 2022, at 2:20 pm
- The image is based on a single photo and represent approximately 39.5 degree horizontal field of view.
- This view is approximately 50 feet west of the nearest pole represented in the simulation.
- The simulation is based on the best information available and is preliminary. Final alignment and structure locations are subject to change based on final engineering and other factors.

Rio Rico to Harshaw 138kV Transmission Line Project

Key Observation Point (KOP) #18



Existing Condition



Simulated Condition

Rio Rico to Harshaw 138kV Transmission Line Project

Key Observation Point (KOP) # 19

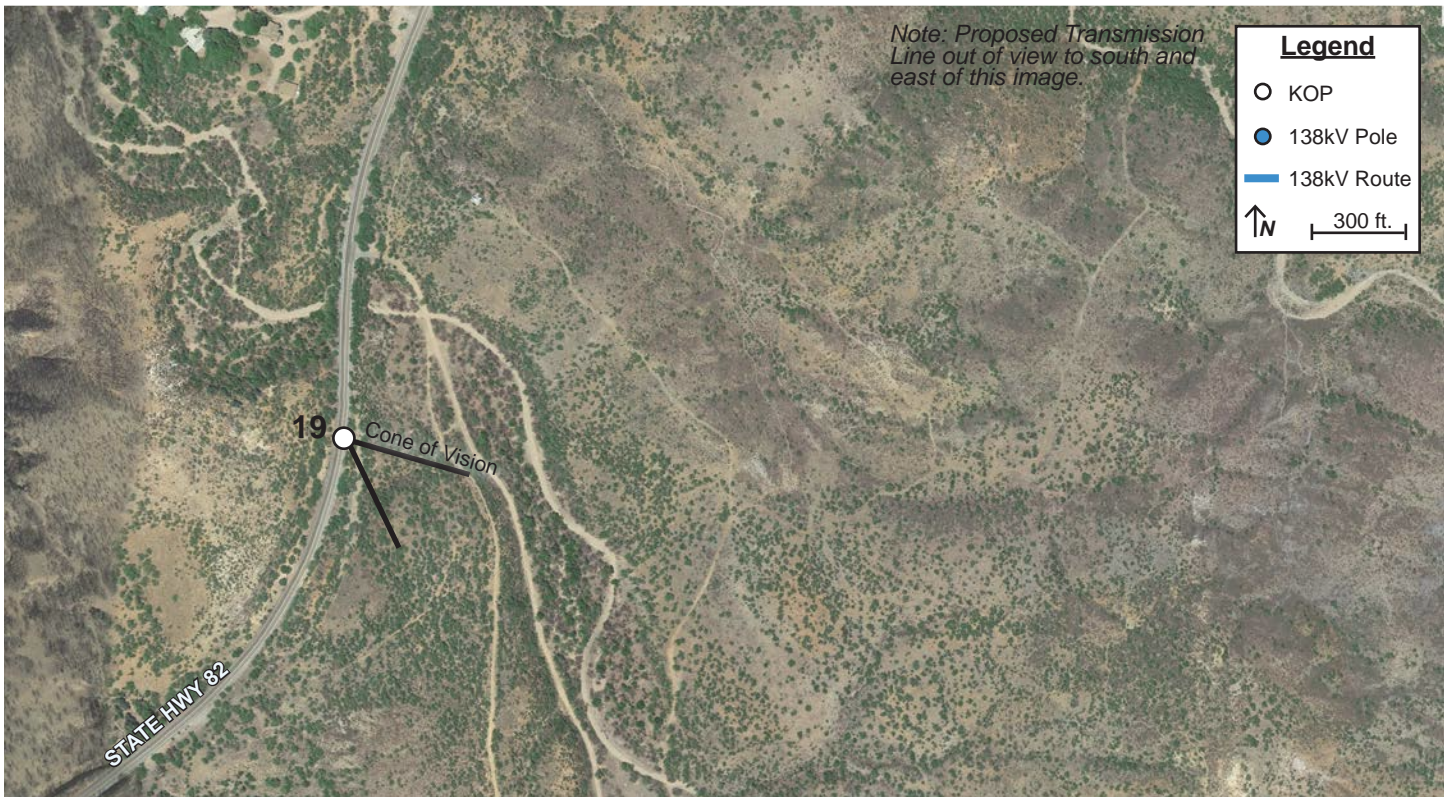


Vicinity Map



- Legend**
- Existing Transmission
 - Preferred Route
 - Alternative A
 - Alternative B
 - Alternative C
 - KOP
 - Proposed Substation
 - Proposed Switchyard

Project Map Enlargement



Notes:

Camera Information

- Type: Canon EOS RP
- Sensor: CMOS (Full-Frame) 35.9mm x 24mm
- Lens: Canon RF 24-105mm f/4-7.1 IS STM
- Focal Length: 50mm | F-Stop: f/9 | ISO:100
- Dimensions in pixel: 6240 x 4160

KOP

- Representative View for: recreationalists and residents
- Location: 1476 E. Patagonia Hwy / State Route 82
- Latitude: 31.495160° N; Longitude: 110.811227° W
- View Point Elevation at Eye Level: 3,946 ft.
- Looking: southeast
- Poles Visible: Structures
- Image File Name: IMG_2017.JPG

Simulation Notes

- Photo Taken: November 7, 2022, at 2:57 pm
- The image is based on a single photo and represent approximately 39.5 degree horizontal field of view.
- This view is approximately 6,191 feet northwest of the nearest pole represented in the simulation.
- The simulation is based on the best information available and is preliminary. Final alignment and structure locations are subject to change based on final engineering and other factors.

Rio Rico to Harshaw 138kV Transmission Line Project

Key Observation Point (KOP) #19



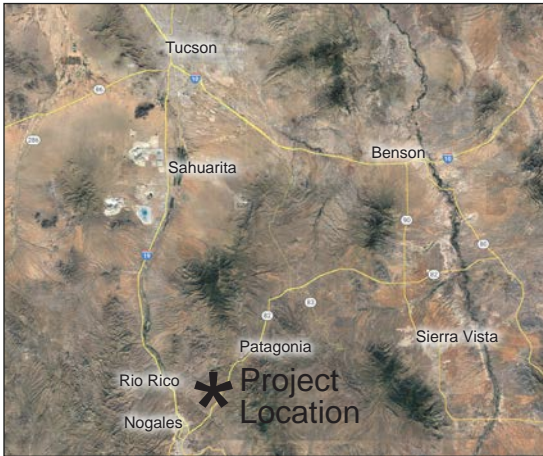
Existing Condition



Simulated Condition

Rio Rico to Harshaw 138kV Transmission Line Project

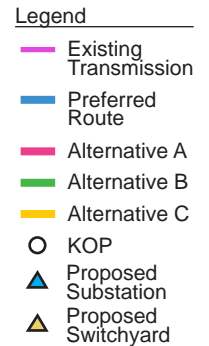
Key Observation Point (KOP) # 20



Vicinity Map



Project Map Enlargement



Notes:

Camera Information

- Type: Canon EOS RP
- Sensor: CMOS (Full-Frame) 35.9mm x 24mm
- Lens: Canon RF 24-105mm f/4-7.1 IS STM
- Focal Length: 50mm | F-Stop: f/9 | ISO:100
- Dimensions in pixel: 6240 x 4160

KOP

- Representative View for: recreationalists and residents
- Location: 1476 E. Patagonia Hwy @ Flux Canyon Rd.
- Latitude: 31.515542° N; Longitude: 110.786155° W
- View Point Elevation at Eye Level: 3,956 ft.
- Looking: southeast
- Poles Visible: Structures
- Image File Name: IMG_1940.JPG

Simulation Notes

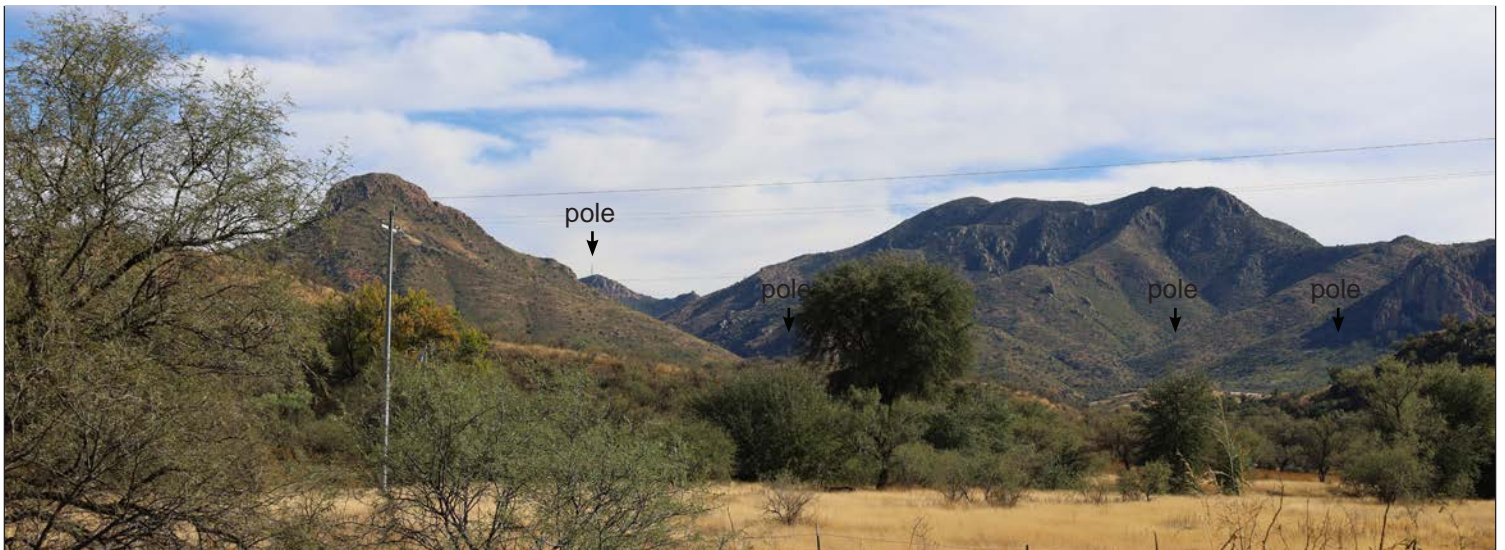
- Photo Taken: November 7, 2022, at 2:13 pm
- The image is based on a single photo and represent approximately 39.5 degree horizontal field of view.
- This view is approximately 6,323 feet northwest of the nearest pole represented in the simulation.
- The simulation is based on the best information available and is preliminary. Final alignment and structure locations are subject to change based on final engineering and other factors.

Rio Rico to Harshaw 138kV Transmission Line Project

Key Observation Point (KOP) #20



Existing Condition



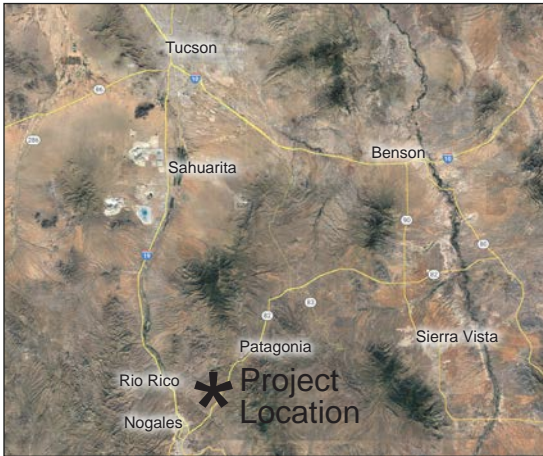
Simulated Condition - Preferred Route



Simulated Condition - Alternative Route C

Rio Rico to Harshaw 138kV Transmission Line Project

Key Observation Point (KOP) # 21

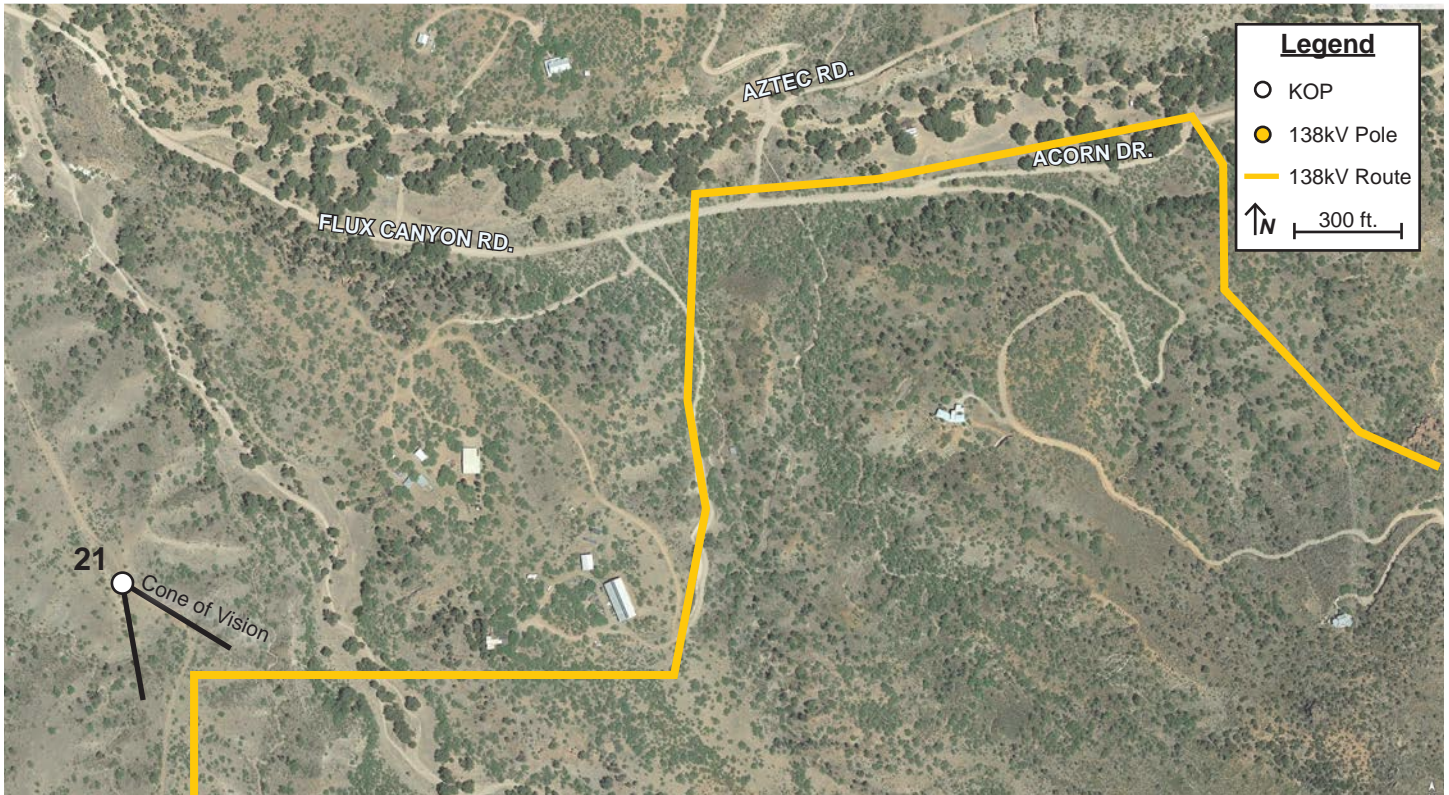


Vicinity Map



Project Map Enlargement

- Legend**
- Existing Transmission
 - Preferred Route
 - Alternative A
 - Alternative B
 - Alternative C
 - KOP
 - Proposed Substation
 - Proposed Switchyard



- Legend**
- KOP
 - 138kV Pole
 - 138kV Route
- ↑ N 300 ft.

Notes:

Camera Information

- Type: Iphone 12 Pro
- Sensor: Apple 12 MP 1/3.6-inch sensor
- Lens: Apple 26 mm-equivalent f/1.6 lens
- Focal Length: 4mm(26mm equivalent) | F-Stop: f/1.6 | ISO:32
- Dimensions in pixel: 4032 x 3024

KOP

- Representative View for: recreationalists and residents
- Location: USFS Land
- Latitude: 31.500780° N; Longitude: 110.777628° W
- View Point Elevation at Eye Level: 4,172 ft.
- Looking: southeast
- Poles Visible: Structures
- Image File Name: IMG_53.JPG

Simulation Notes

- Photo Taken: August 31, 2022, at 3:15pm
- The image is based on a single photo and represent approximately 71 degree horizontal field of view.
- This view is approximately 364 feet north northwest of the nearest pole represented in the simulation.
- The simulation is based on the best information available and is preliminary. Final alignment and structure locations are subject to change based on final engineering and other factors.

Rio Rico to Harshaw 138kV Transmission Line Project

Key Observation Point (KOP) #21



Existing Condition



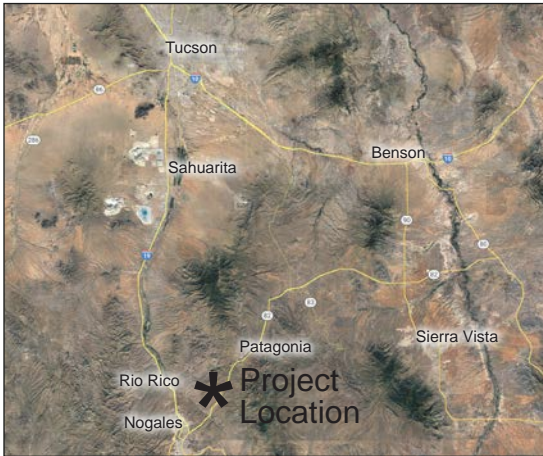
Simulated Condition - Preferred Route



Simulated Condition - Alternative Route C

Rio Rico to Harshaw 138kV Transmission Line Project

Key Observation Point (KOP) # 22

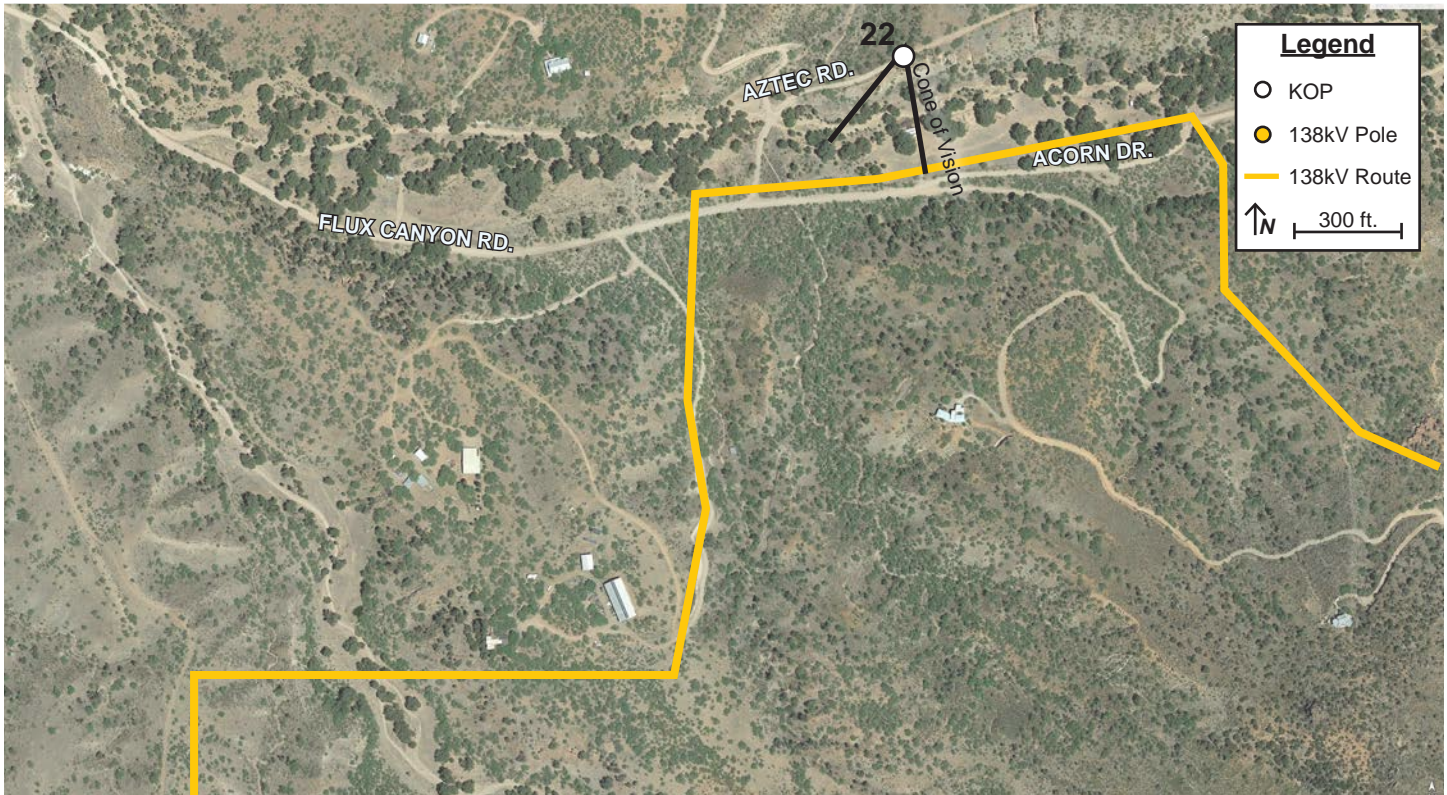


Vicinity Map



Project Map Enlargement

- Legend**
- Existing Transmission
 - Preferred Route
 - Alternative A
 - Alternative B
 - Alternative C
 - KOP
 - Proposed Substation
 - Proposed Switchyard



Notes:

Camera Information

- Type: Canon EOS RP
- Sensor: CMOS (Full-Frame) 35.9mm x 24mm
- Lens: Canon RF 24-105mm f/4-7.1 IS STM
- Focal Length: 35mm | F-Stop: f/9 | ISO:100
- Dimensions in pixel: 6240 x 4160

KOP

- Representative View for: residents
- Location: 21 Aztec Road
- Latitude: 31.505528° N; Longitude: 110.769360° W
- View Point Elevation at Eye Level: 4,116 ft.
- Looking: southwest
- Poles Visible: Structures
- Image File Name: IMG_1993.JPG

Simulation Notes

- Photo Taken: November 7, 2022, at 2:42 pm
- The image is based on a single photo and represent approximately 54 degree horizontal field of view.
- This view is approximately 405 feet northeast of the nearest pole represented in the simulation.
- The simulation is based on the best information available and is preliminary. Final alignment and structure locations are subject to change based on final engineering and other factors.

Rio Rico to Harshaw 138kV Transmission Line Project

Key Observation Point (KOP) #22



Existing Condition



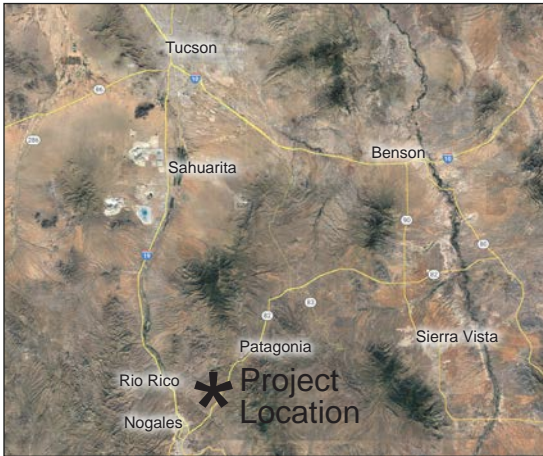
Simulated Condition - Preferred Route



Simulated Condition - Alternative Route C

Rio Rico to Harshaw 138kV Transmission Line Project

Key Observation Point (KOP) # 23

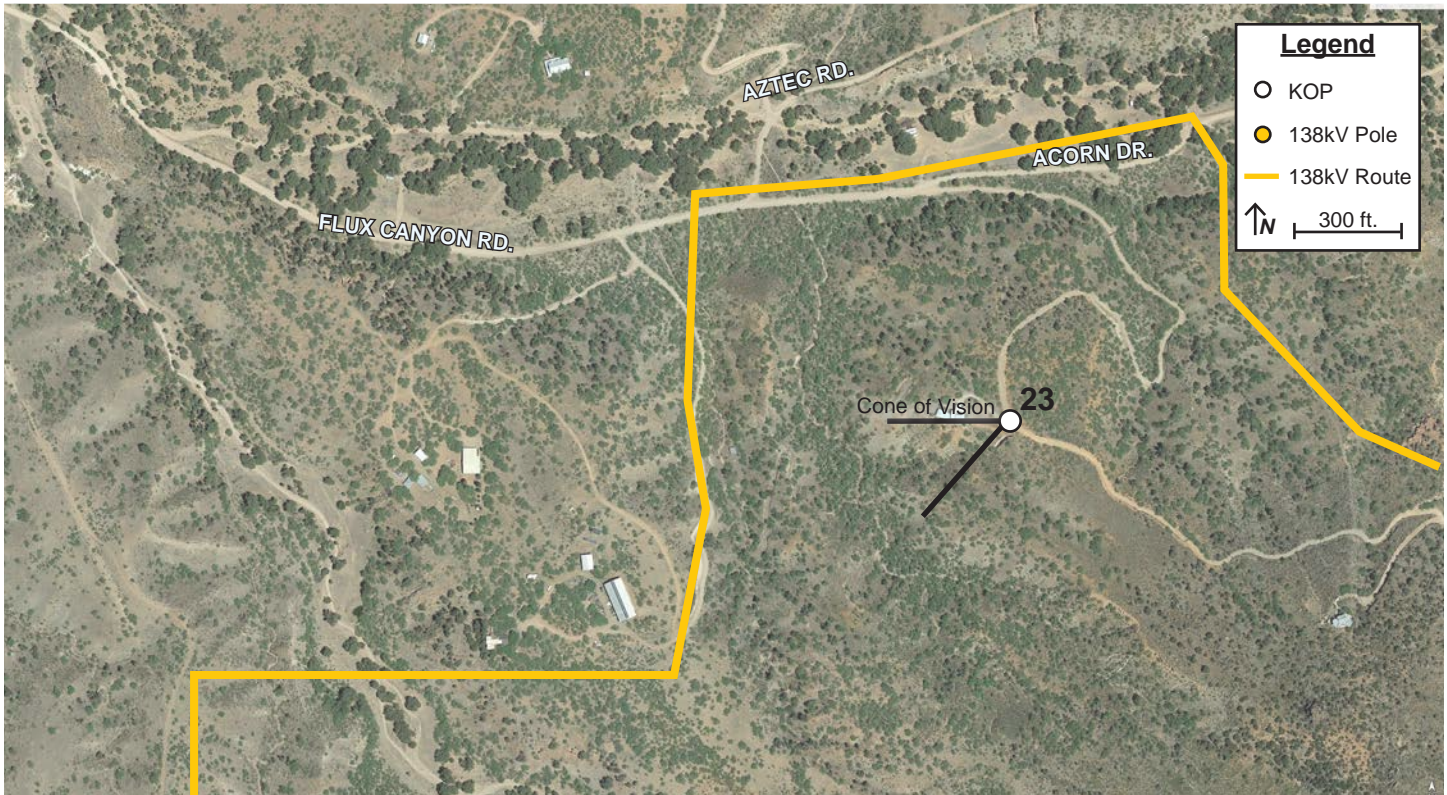


Vicinity Map



Project Map Enlargement

- Legend**
- Existing Transmission
 - Preferred Route
 - Alternative A
 - Alternative B
 - Alternative C
 - KOP
 - Proposed Substation
 - Proposed Switchyard



Notes:

Camera Information

- Type: Canon EOS RP
- Sensor: CMOS (Full-Frame) 35.9mm x 24mm
- Lens: Canon RF 24-105mm f/4-7.1 IS STM
- Focal Length: 24mm | F-Stop: f/9 | ISO:100
- Dimensions in pixel: 6240 x 4160

KOP

- Representative View for: residents
- Location: Flux Canyon Road
- Latitude: 31.502353° N; Longitude: 110.768662° W
- View Point Elevation at Eye Level: 4,214 ft.
- Looking: west
- Poles Visible: Structures
- Image File Name: IMG_1957.JPG

Simulation Notes

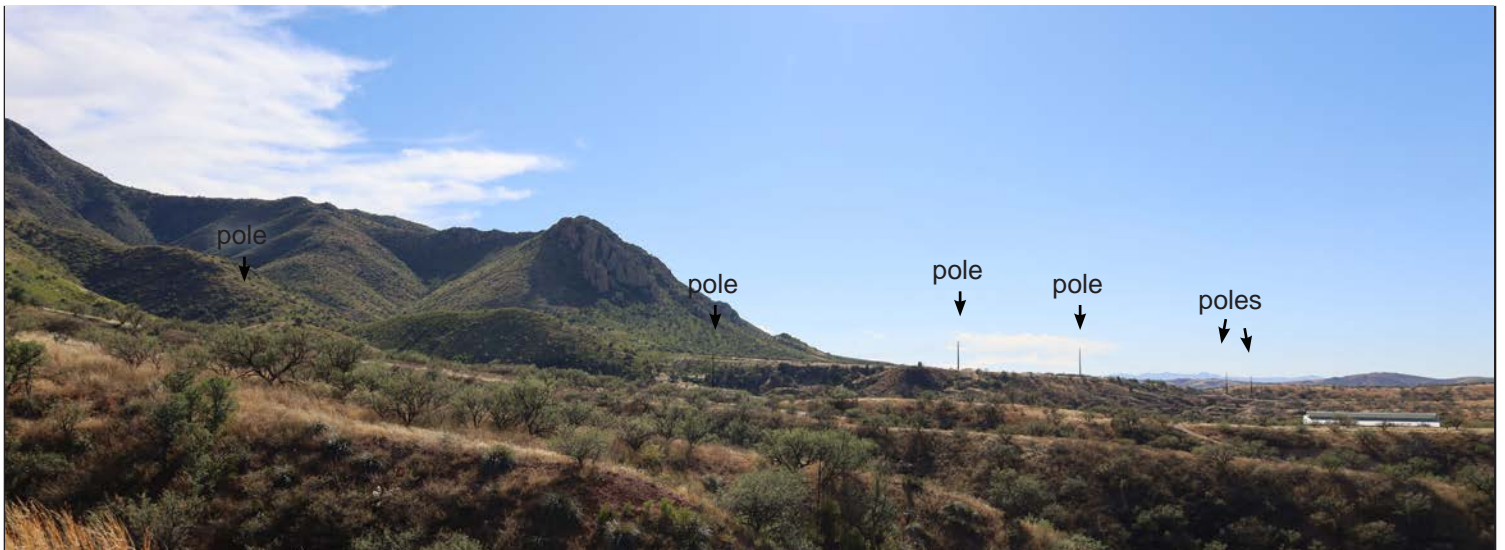
- Photo Taken: November 7, 2022, at 2:31pm
- The image is based on a single photo and represent approximately 73.7 degree horizontal field of view.
- This view is approximately 1031 feet east of the nearest pole represented in the simulation.
- The simulation is based on the best information available and is preliminary. Final alignment and structure locations are subject to change based on final engineering and other factors.

Rio Rico to Harshaw 138kV Transmission Line Project

Key Observation Point (KOP) #23



Existing Condition



Simulated Condition - Preferred Route



Simulated Condition - Alternative Route C

Rio Rico to Harshaw 138kV Transmission Line Project

Key Observation Point (KOP) # 24



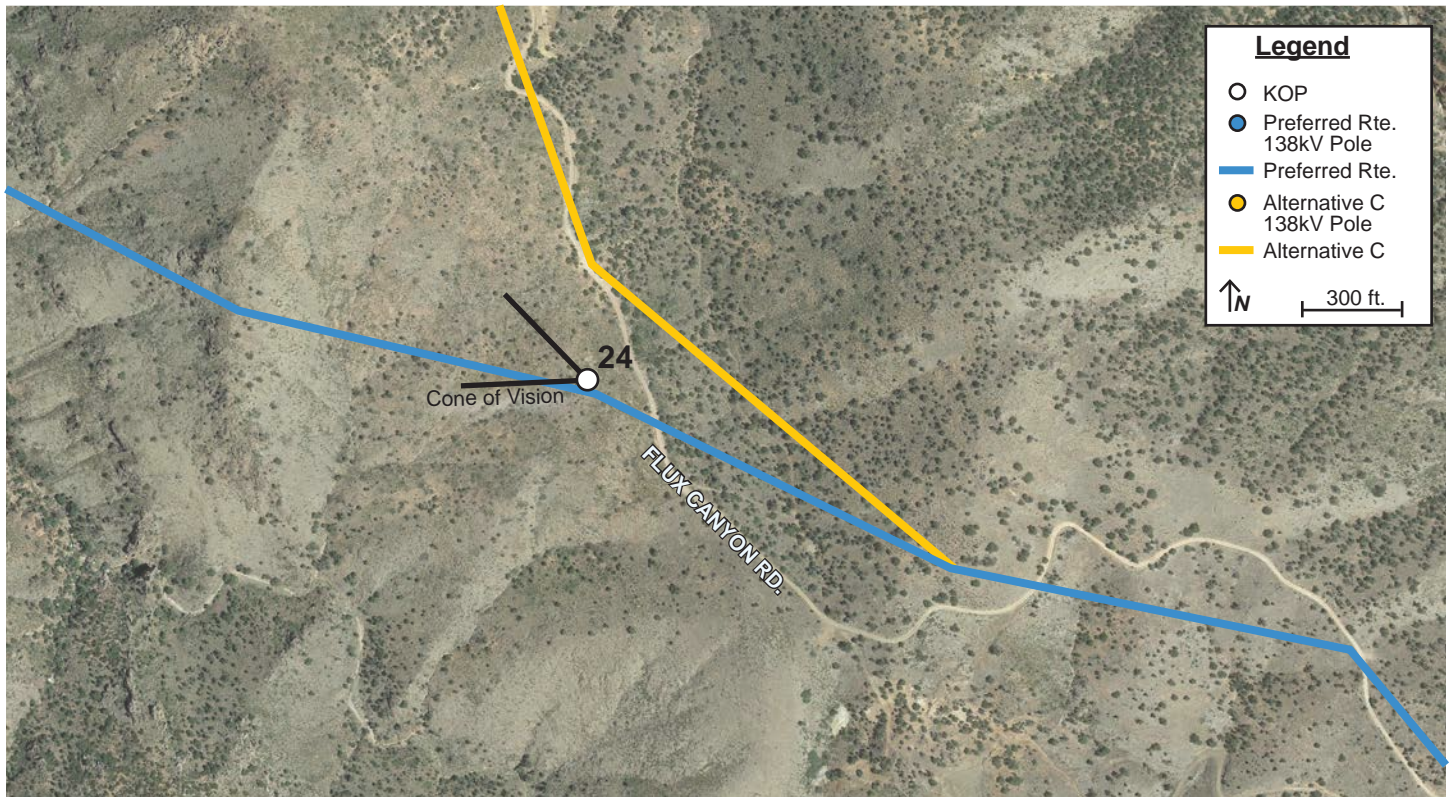
Vicinity Map



Project Map Enlargement

Legend

- Existing Transmission
- Preferred Route
- Alternative A
- Alternative B
- Alternative C
- KOP
- Proposed Substation
- Proposed Switchyard



Notes:

Camera Information

- Type: Iphone 12 Pro
- Sensor: Apple 12 MP 1/3.6-inch sensor
- Lens: Apple 26 mm-equivalent f/1.6 lens
- Focal Length: 4mm(26mm equivalent) | F-Stop: f/1.6 | ISO:32
- Dimensions in pixel: 1280 x 960

KOP

- Representative View for: commercial and recreational users
- Location: USFS Land
- Latitude: 31.491935° N; Longitude: 110.758192° W
- View Point Elevation at Eye Level: 4,926 ft.
- Looking: northwest
- Poles Visible: Structures
- Image File Name: IMG_49.JPG

Simulation Notes

- Photo Taken: August 31, 2022, at 8:34am
- The image is based on a single photo and represent approximately 71 degree horizontal field of view.
- This view is approximately 1,136 feet southeast of the nearest pole represented in the simulation.
- The simulation is based on the best information available and is preliminary. Final alignment and structure locations are subject to change based on final engineering and other factors.

Rio Rico to Harshaw 138kV Transmission Line Project

Key Observation Point (KOP) #24



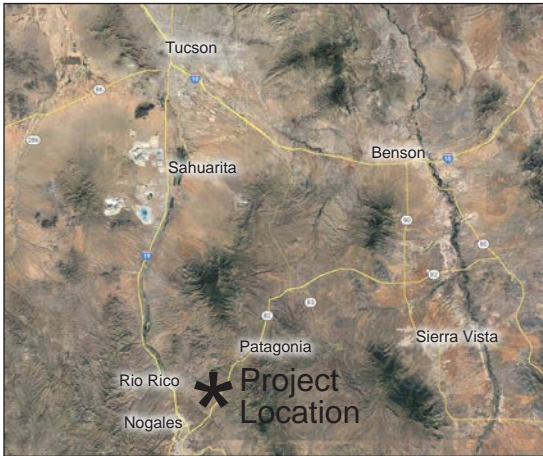
Existing Condition



Simulated Condition

Rio Rico to Harshaw 138kV Transmission Line Project

Key Observation Point (KOP) # 25

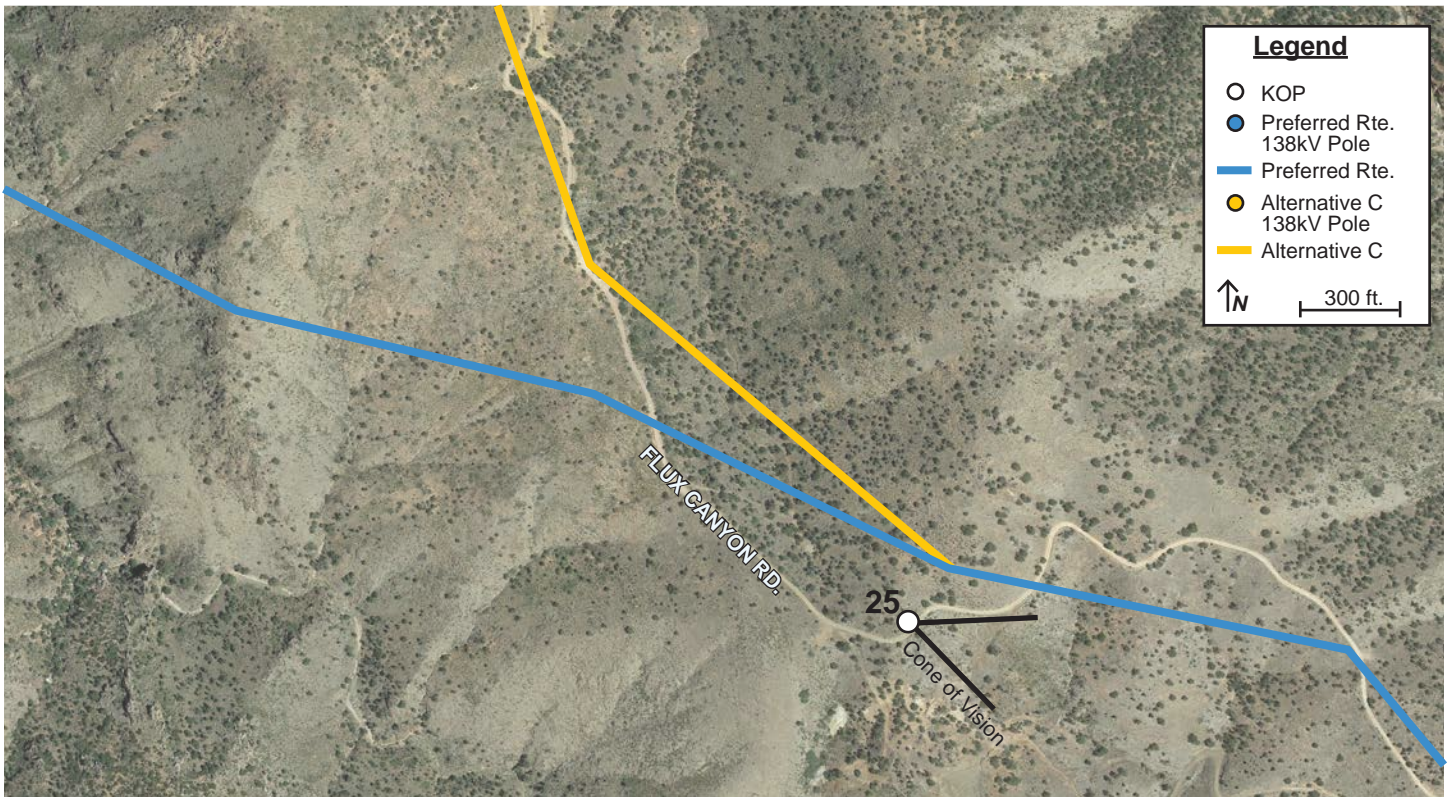


Vicinity Map



Project Map Enlargement

- Legend**
- Existing Transmission
 - Preferred Route
 - Alternative A
 - Alternative B
 - Alternative C
 - KOP
 - Proposed Substation
 - Proposed Switchyard



Notes:

Camera Information

- Type: Canon EOS RP
- Sensor: CMOS (Full-Frame) 35.9mm x 24mm
- Lens: Canon RF 24-105mm f/4-7.1 IS STM
- Focal Length: 24mm | F-Stop: f/7.1 | ISO:100
- Dimensions in pixel: 6240 x 4160

KOP

- Representative View for: recreationalists and residents
- Location: Flux Canyon Road
- Latitude: 31.489862° N; Longitude: 110.754737° W
- View Point Elevation at Eye Level: 4,953 ft.
- Looking: east
- Poles Visible: Structures
- Image File Name: IMG_1518.JPG

Simulation Notes

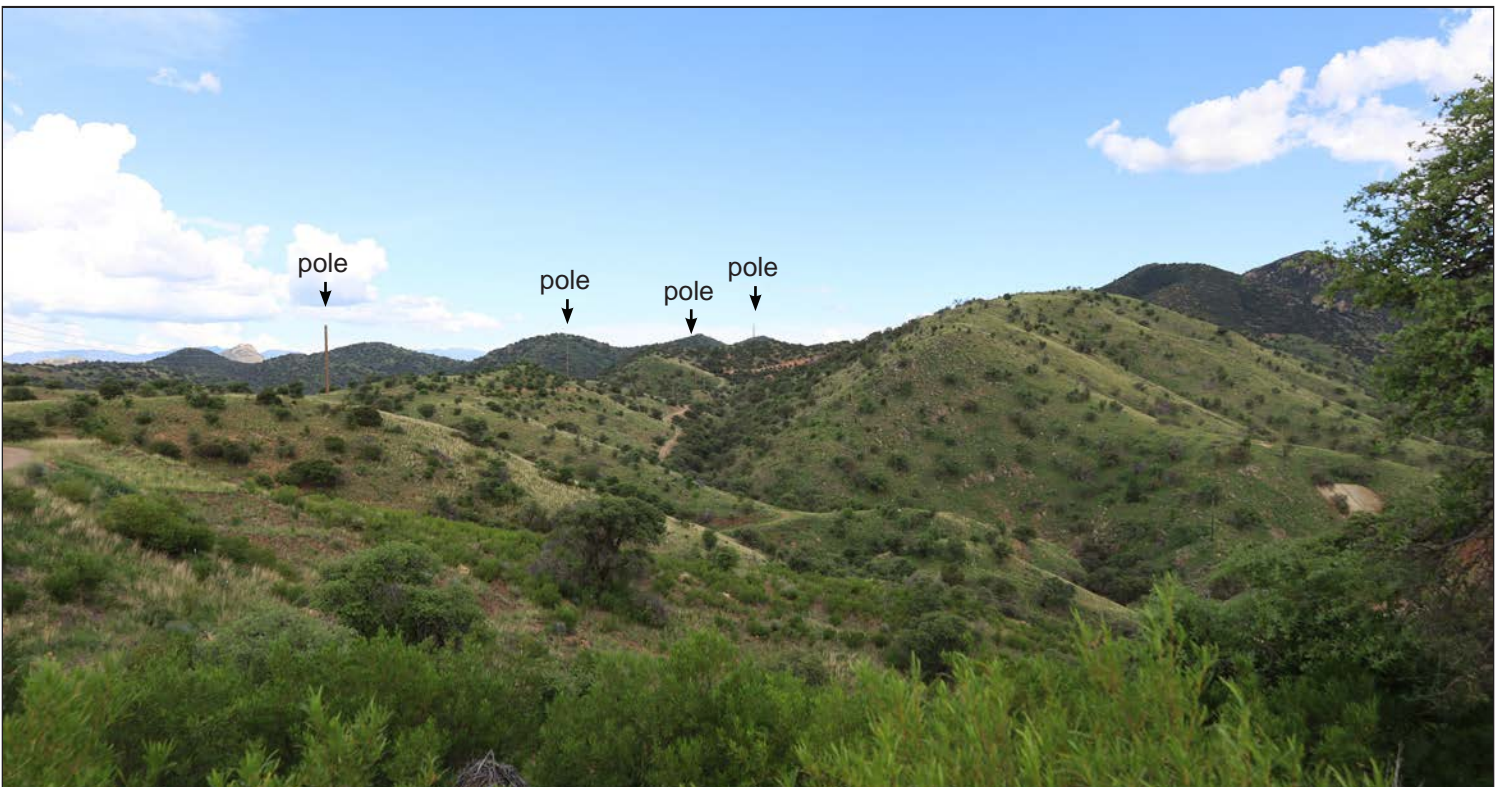
- Photo Taken: August 12, 2022, at 3:35 pm
- The image is based on a single photo and represent approximately 73.7 degree horizontal field of view.
- This view is approximately 587 feet west of the nearest pole represented in the simulation.
- The simulation is based on the best information available and is preliminary. Final alignment and structure locations are subject to change based on final engineering and other factors.

Rio Rico to Harshaw 138kV Transmission Line Project

Key Observation Point (KOP) #25



Existing Condition



Simulated Condition