

# AGENCY BRIEFING

August 21, 2024

10:00 a.m.

## Federal Agencies

- Bureau of Land Mgmt.
- Western Area Power Administration
- U.S. Fish & Wildlife Service

## Tribes

- Chemehuevi Indian Tribe
- Colorado River Indian Tribes
- Fort Mohave Indian Tribe
- Hopi Tribe
- Hualapai Tribe
- Moapa Band of Paiute Indians
- Navajo Nation
- Pueblo of Zuni
- Yavapai Apache Nation

## Please type into the chat:

- **Name**
- **Organization**
- **Title/Role**

## State of Arizona

- Office of Governor Katie Hobbs
- Department of Corrections
- Department of Environmental Quality
- Department of Transportation
- Department of Water Resources
- Game and Fish Department
- State Historic Preservation Office
- State Land Department

## Mohave County

- County Manager's Office
- County Attorney
- Development Services
- Economic Development and Tourism
- Flood Control
- Public Works
- Risk & Emergency Mgmt.

## Utilities

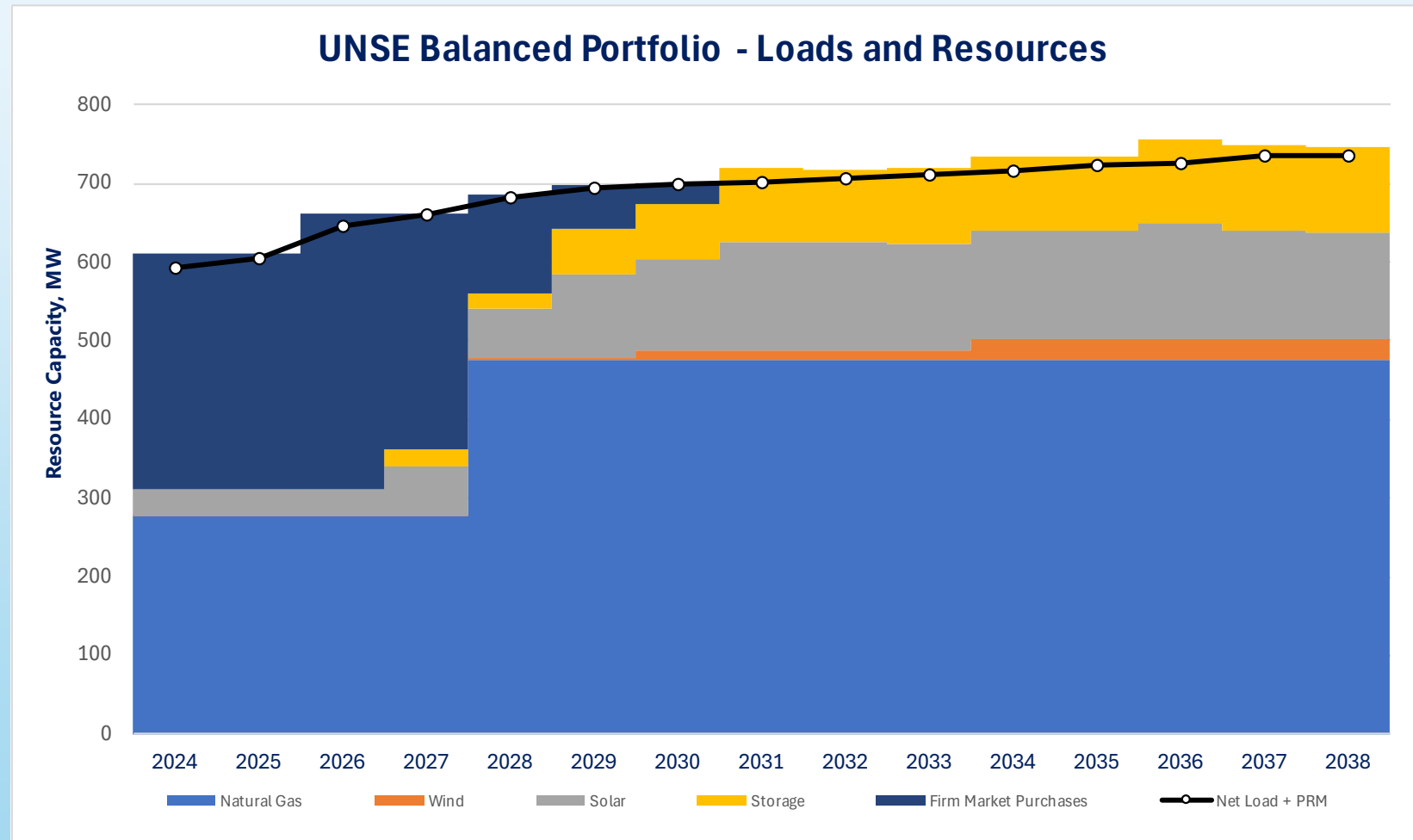
- UNS Gas
- Kinder Morgan

## Local Businesses

- Need and Purpose
- Project Details
  - BMGS Expansion and Switchyard
  - 230 kV Generation Tie Line
- Environmental Permitting Requirements
- Line Siting Process
- Study Area and Preliminary Segments
- Routing Criteria
- Schedule
- More Information
- How to Comment
- Questions

## Preserve Reliability

- UNSE buys much of its power from other providers on the regional energy market
- Reliable energy is increasingly unavailable in the desert Southwest, especially during extreme summer heat
- From 2015-2021, customers' peak energy demands increased by 16%



PRM = Planning Reserve Margin

## 2023 IRP UNSE Balanced Portfolio

2024-2038 Capacity Expansion Plan – 775 MW

2024-2038	Expansion Plan
Renewables	350
Storage	225
Natural Gas	200
<b>Total Expansion Plan</b>	<b>775</b>



**2027**  
50 MW - Storage  
50 MW - Solar



**2029**  
75 MW - Storage  
75 MW - Solar

**2030**  
25 MW - Storage  
25 MW - Solar  
50 MW - Wind



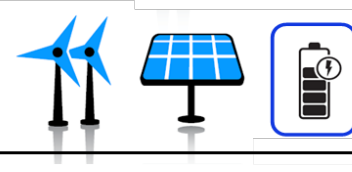
**Energy Efficiency & Demand Response**  
1% of Annual Retail Sales  
(2027-2038)



**Energy Efficiency & Demand Response**  
3-Year Savings Goal  
of 4.6% of Annual  
Retail Sales  
(2024-2026)



**2028**  
200 MW of  
Combustion  
Turbines



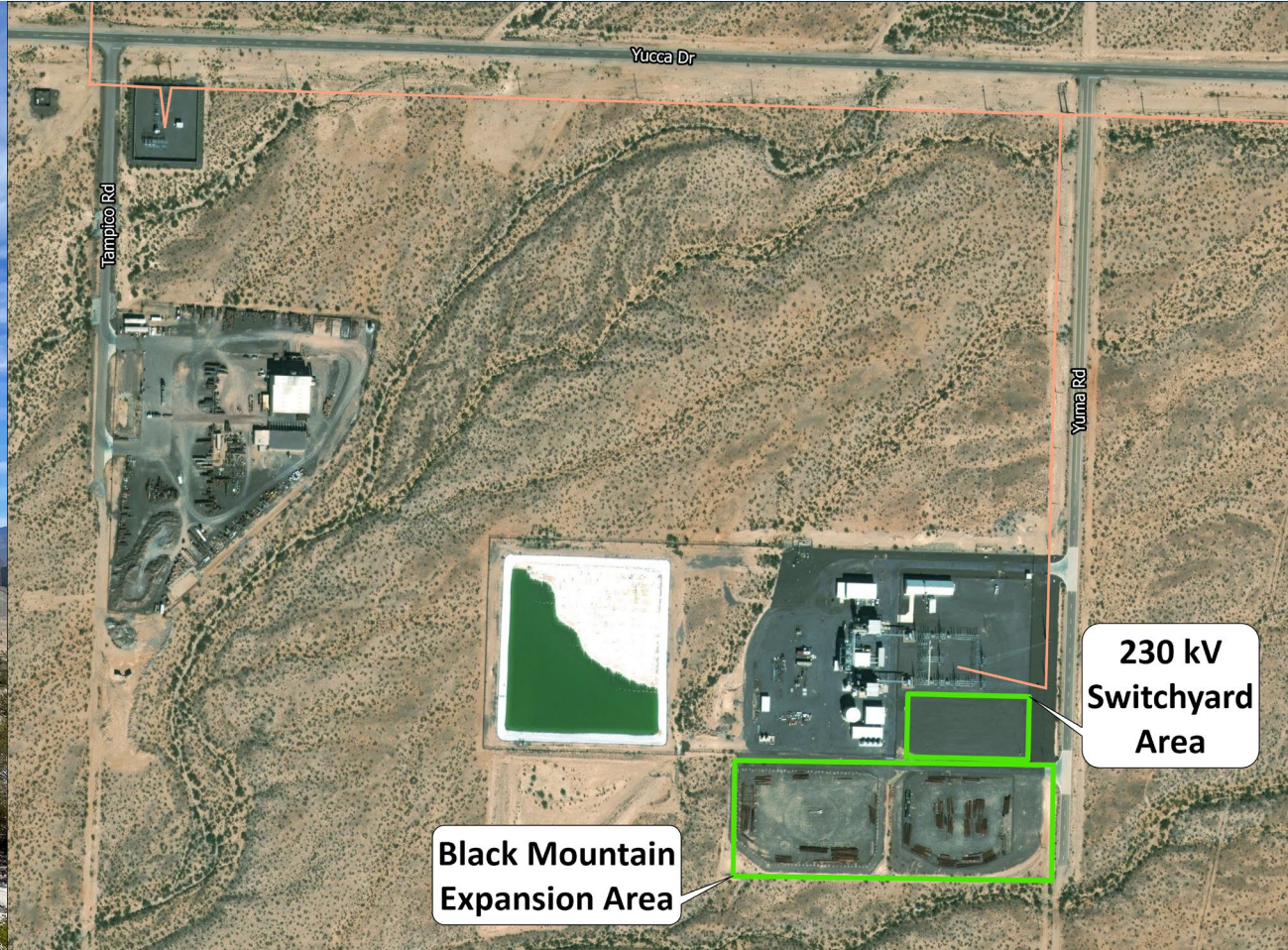
**2031 - 2036**  
75 MW - Wind  
75 MW - Solar  
75 MW - Storage

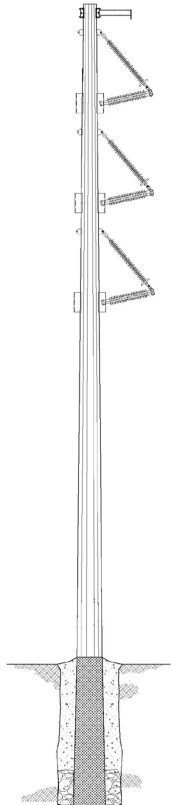
The UNSE 2023 Integrated Resource Plan calls for additional renewable, storage, and natural gas generating resources by 2038

# PROJECT LOCATION



# GENERATION EXPANSION AREA & SWITCHYARD





## Pole Characteristics

- Type: Tubular weathering steel monopoles
- Pole height: Typically, 85-125 feet
- Span length: 700-1,000 feet (distance between poles)
- 6-8 Structures per mile
- Right of way width: 125 feet





## Air Quality

- Expansion Project requires a Significant Permit Revision to the existing Title V Permit
- Application is under technical review by the Arizona Department of Environmental Quality (ADEQ) Public Notice and Comment to follow
- Air quality modeling demonstrates the Expansion Project will not cause or contribute to an exceedance of the National Ambient Air Quality Standards
- Turbines will be equipped with state-of-the-art emission controls and optimized processes for Criteria Pollutants, Hazardous Air Pollutants (HAPs) and carbon dioxide. Permit will include emission limits, as well as monitoring, record-keeping and reporting requirements.

## Water Use

- Facility is not located within an Active Management Area (AMA) or Irrigation Non-Expansion Area (INA)
- Water use permit not required
- Installation of new production wells (if necessary) will be permitted / registered with Arizona Department of Water Resources (ADWR)

## Wastewater

- Facility currently has an Aquifer Protection Permit (APP) for the existing lined evaporation pond
- The APP permit will be amended if an additional evaporation pond is required
- Industrial wastewater does not and will not discharge to the ground or a surface water

Undetermined  
Black Mountain  
to Griffith Route

Griffith  
Substation

Navajo Dr

Centennial Rd

Yuma Rd

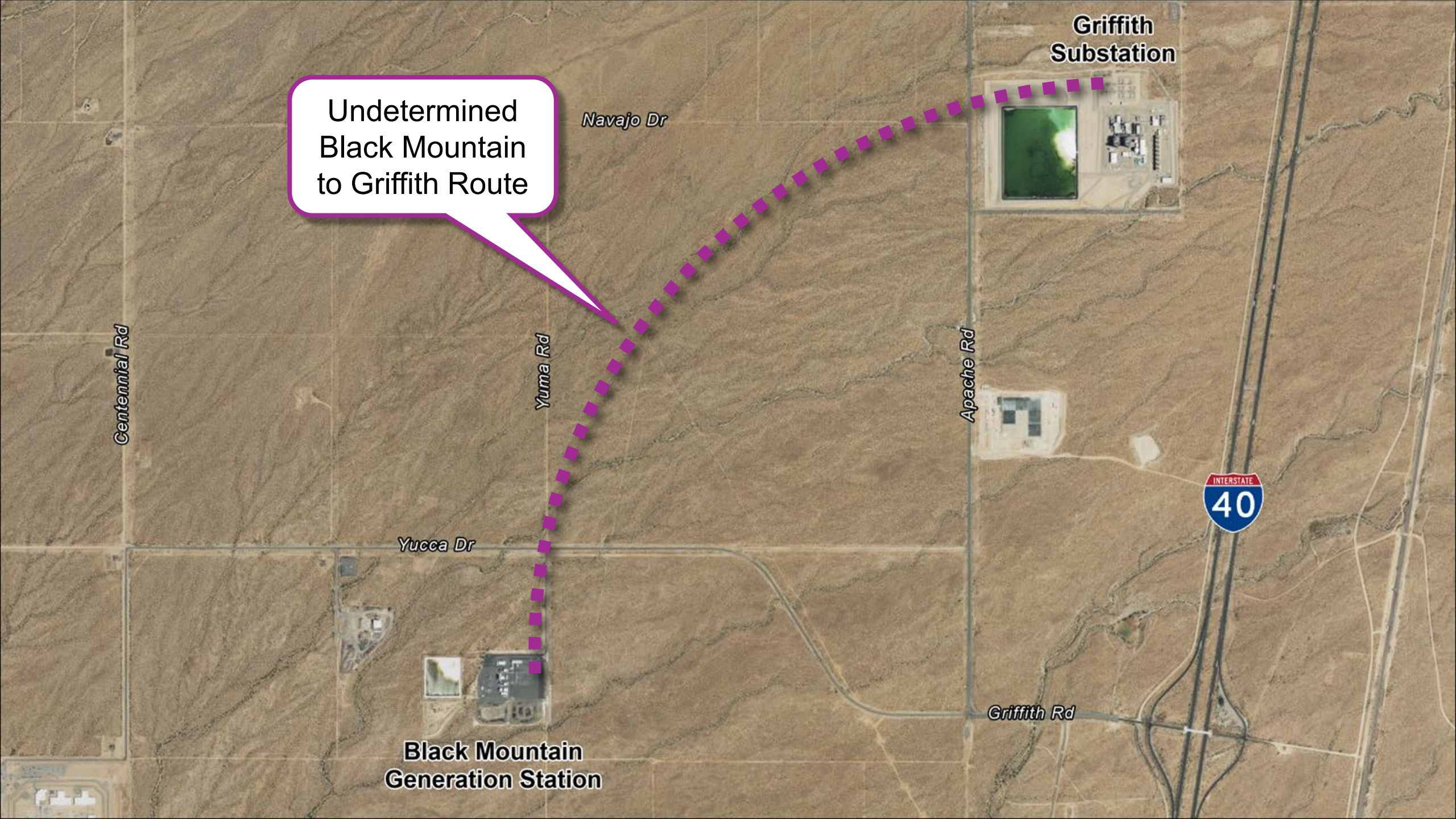
Apache Rd

Yucca Dr

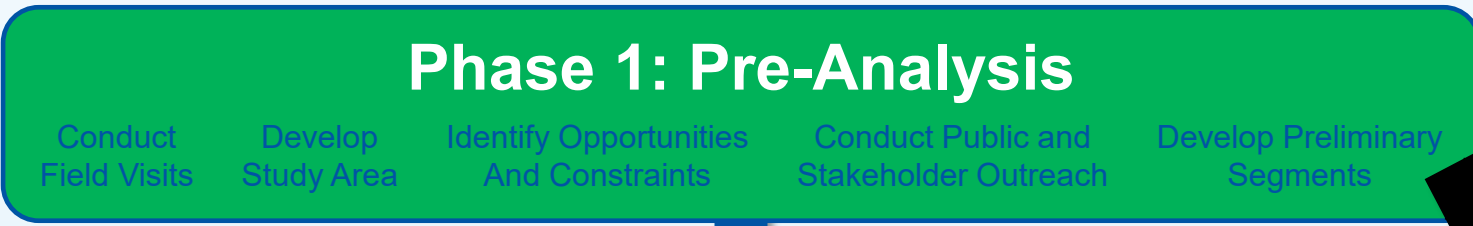
INTERSTATE  
40

Black Mountain  
Generation Station

Griffith Rd



# Planning and Siting Process



**July – August 2024**

**WE ARE HERE**



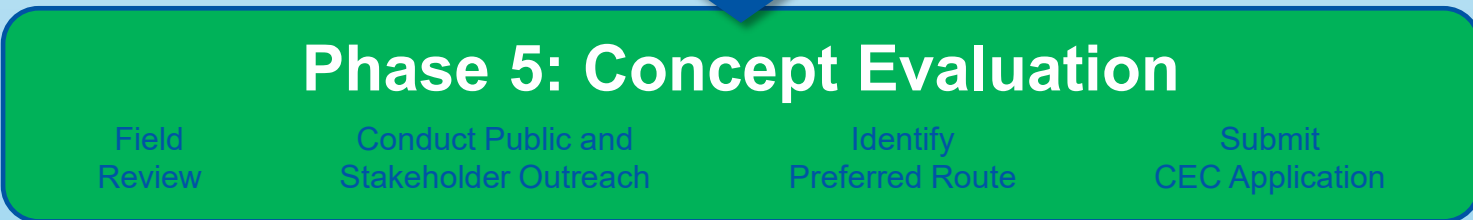
**August 2024**



**September 2024**



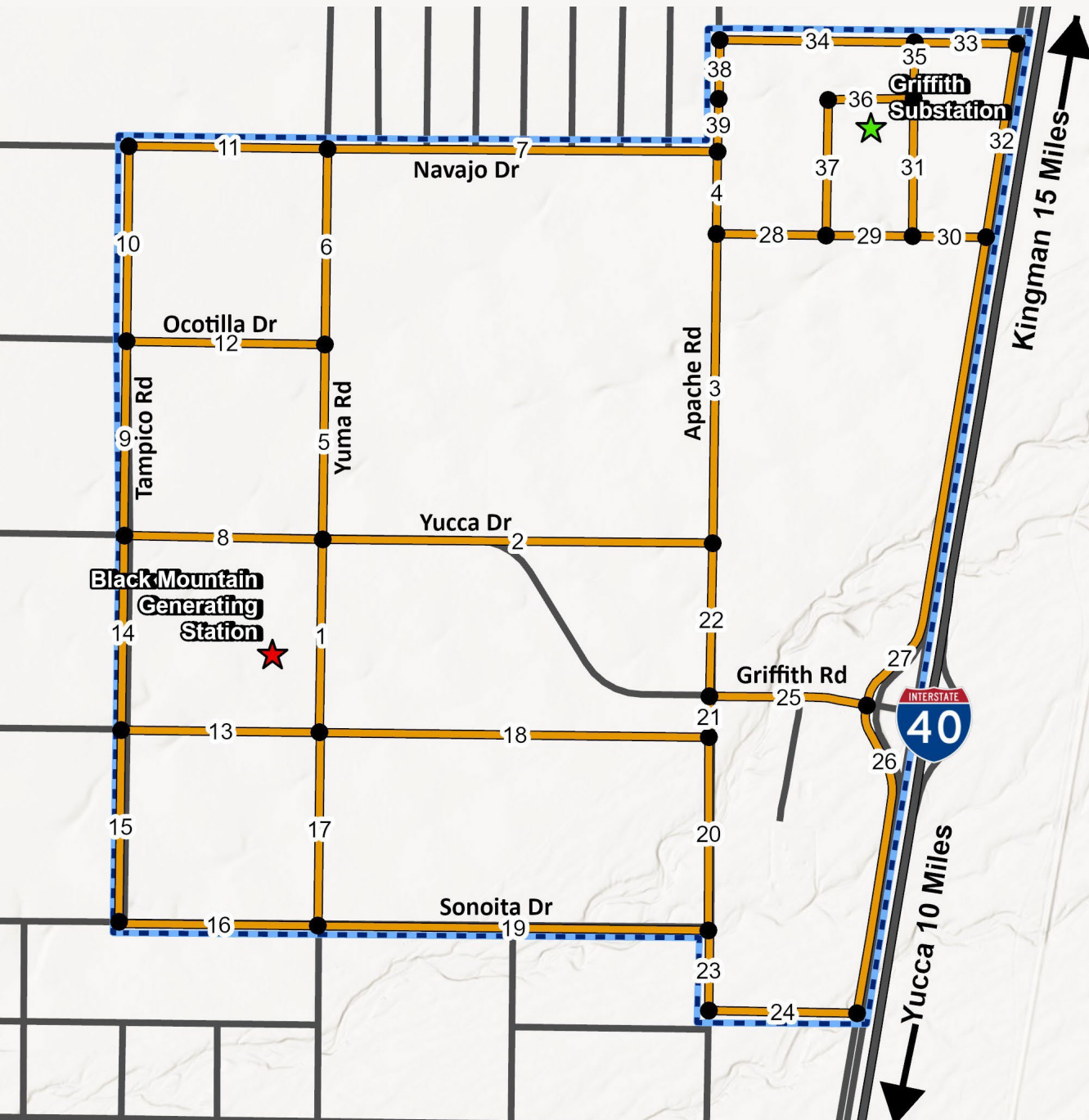
**October 2024**



**Nov. – Dec. 2024**

**Hearing – Arizona Power Plant and Transmission Line Siting Committee**

**Q1 2025**



## Black Mountain Expansion Project

- Segment End Point
- ★ Griffith Substation
- ★ Black Mountain Generating Station
- Preliminary Segments
- - - Study Area
- Interstate
- Roads

Sources: ESRI, UNS  
 Projection: NAD 83 UTM Zone 12N  
 Basemap: World Topographic

This map is for planning purposes only.  
 UNS makes no warranty of its accuracy.



**The Arizona Corporation Commission considers several factors before approving a Certificate of Environmental Compatibility.**

**These factors include:**

- Wildlife and plant life
- Scenic areas, historic sites and archaeological sites and structures
- Environment
- Noise emission levels and interference with communication signals
- Potential public recreational uses
- Existing development plans
- Engineering feasibility and challenges
- Project costs and potential impacts on customer rates
- Public input

- Q3-Q4 2024 – Planning and Siting Process
- Q4 2024 – CEC Application Submittal
- Q1 2025 – Line Siting Hearing
- Q2 2025 – ACC Open Meeting
- 2025 – Engineering Design, Right-of-Way Acquisition, Permitting, Procurement
- 2026-27 – Construction
- 2028 – Project In-service Date

For more project information please visit the project webpage:

[www.uesaz.com/black-mountain](http://www.uesaz.com/black-mountain)

Here, you will find:

- Project details including the project newsletter
- A print copy of this presentation
- Commonly asked questions & answers

In future, you will find:

- Resource studies and analyses
- Public & Stakeholder comments and UNSE responses



- Fill out an online comment form at [www.uesaz.com/black-mountain](http://www.uesaz.com/black-mountain)
- Send comments via email to [blackmountain@uesaz.com](mailto:blackmountain@uesaz.com)
- Call 1-928-681-6500 and leave a voicemail message
- Mail a letter with comments to:

C/O Sonoran Land Resources  
ATTN: Black Mountain  
Expansion Project  
P.O. Box 18873  
Tucson, Arizona 85731



**Please use the raise hand feature in MS Teams**

or

**Type your question into the chat**