

- Griffith Substation
- Black Mountain Generating Station
- Preferred Route
- Alternative Route
- Study Area
- Township-Range
- Surface Management**
- Bureau of Land Management
- Private
- State



Black Mountain to Griffith 230 kV Generation Tie Line

EXHIBIT 1
 Prefiling 12-11-2024

Location



Scale: 1:62,500
 Sources: Esri, Unisource Energy Services, Bureau of Land Management, and Mohave County
 Projection: NAD 1983 UTM Zone 12N
 Basemap: Esri World Topographic Map

This map is for planning purposes only. UNSE makes no warranty of its accuracy.

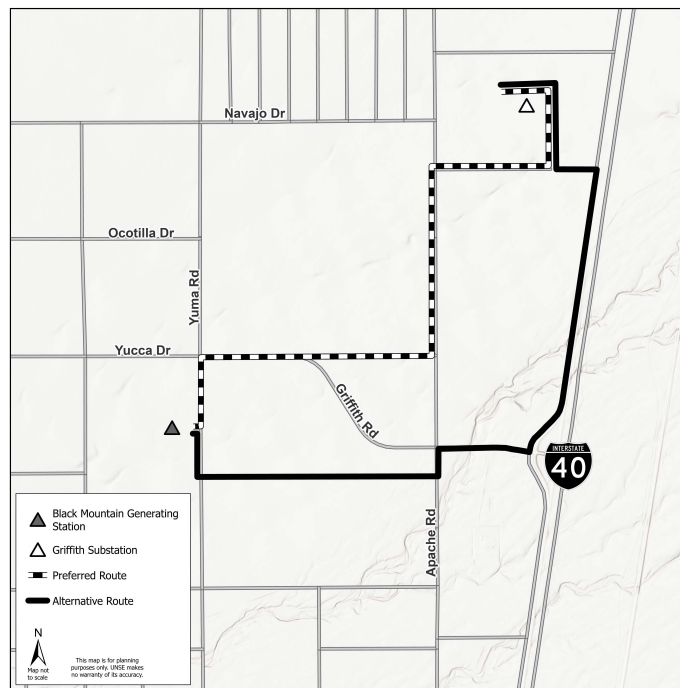


NOTICE OF PUBLIC HEARING

Black Mountain to Griffith 230 Kilovolt Generation Tie Line

UniSource invites the public to an upcoming hearing before the Arizona Power Plant and Transmission Line Siting Committee.

DATE	TIME	LOCATION
February 3, 2025	1 p.m.—5 p.m.	Beale Celebrations 201 N. 4th Street Kingman, AZ
February 4-7, 2025	9 a.m.—5 p.m.	



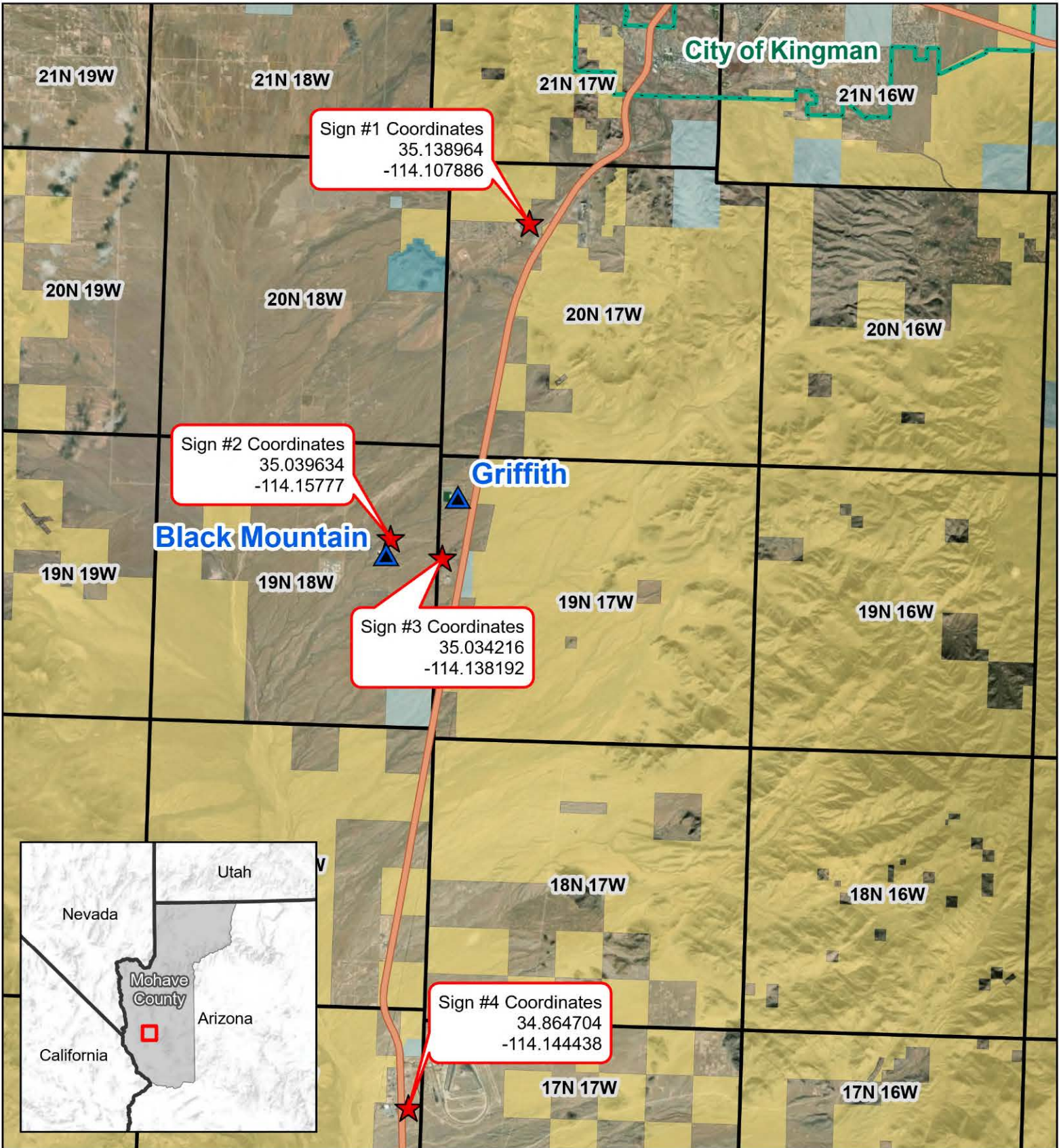
Public Comments will be accepted during the hearing on February 3, 2025, beginning at 5:30 p.m. Comments will be taken in-person at the Beale Celebrations Event Center or virtually.



For information on commenting virtually, please visit: uesaz.com/black-mountain/ or call 928-681-6500.

EXHIBIT 2
Prefiling 12-11-2024

Arizona Corporation Commission Docket No. **L-00000C-24-XXXX-00XXX**





Sign #1 Coordinates
35.138964
-114.107886

Sign #2 Coordinates
35.039634
-114.15777

Sign #3 Coordinates
35.034216
-114.138192

Sign #4 Coordinates
34.864704
-114.144438

-  Sign Location
-  Substation / Generating Station
-  Incorporated City Boundary
-  Bureau of Land Management
-  Local or State Parks
-  Private
-  State
-  State Wildlife Area

Sources: ESRI, UNS Electric, Mohave County, and Bureau of Land Management
Projection: NAD 1983 UTM Zone 12N

This map is for planning purposes only. UNSE makes no warranty of its accuracy.

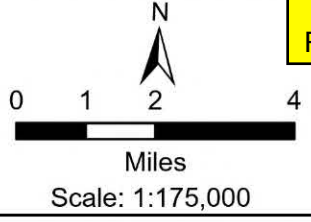


EXHIBIT 3
Prefiling 12-11-2024



**Black Mountain
Generating Station
Expansion Project**
**Notice of Hearing
Sign Locations**