

Antares to Meadview 69kV Transmission Line Upgrade



October 6, 2021



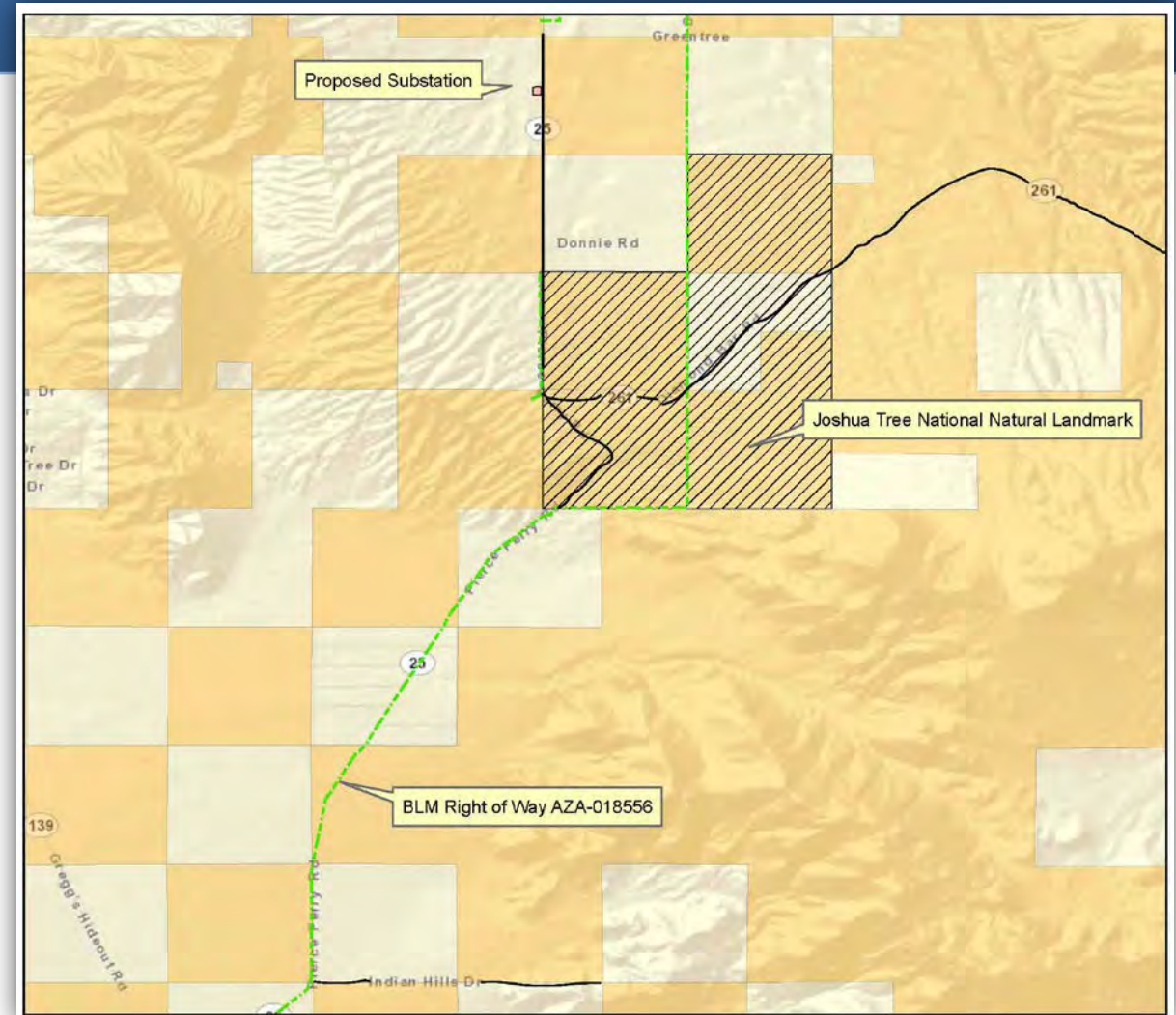
PROJECT LOCATION

- Proposing a 9-mile (+/-) transmission line upgrade from Indian Hill Road to the planned Meadview Substation
- Alignment within existing corridor of Pierce Ferry Road
- Crosses private land and federal public land managed by Bureau of Land Management (BLM)
- Power line within county road ROW for most of the route
- Existing distribution line would be decommissioned and removed



EXISTING RIGHT OF WAY

- Requesting amendment to existing BLM ROW AZA-018556
- Amendment request:
 - Relocate line to opposite side of road
 - Construct transmission line
 - Relocate distribution line to transmission line structures and remove existing poles
- Avoiding disturbance of the National Natural Landmark
- BLM Classification is Visual Resource Management Class (VRM) II
- Remain in road corridor to reduce visual impact





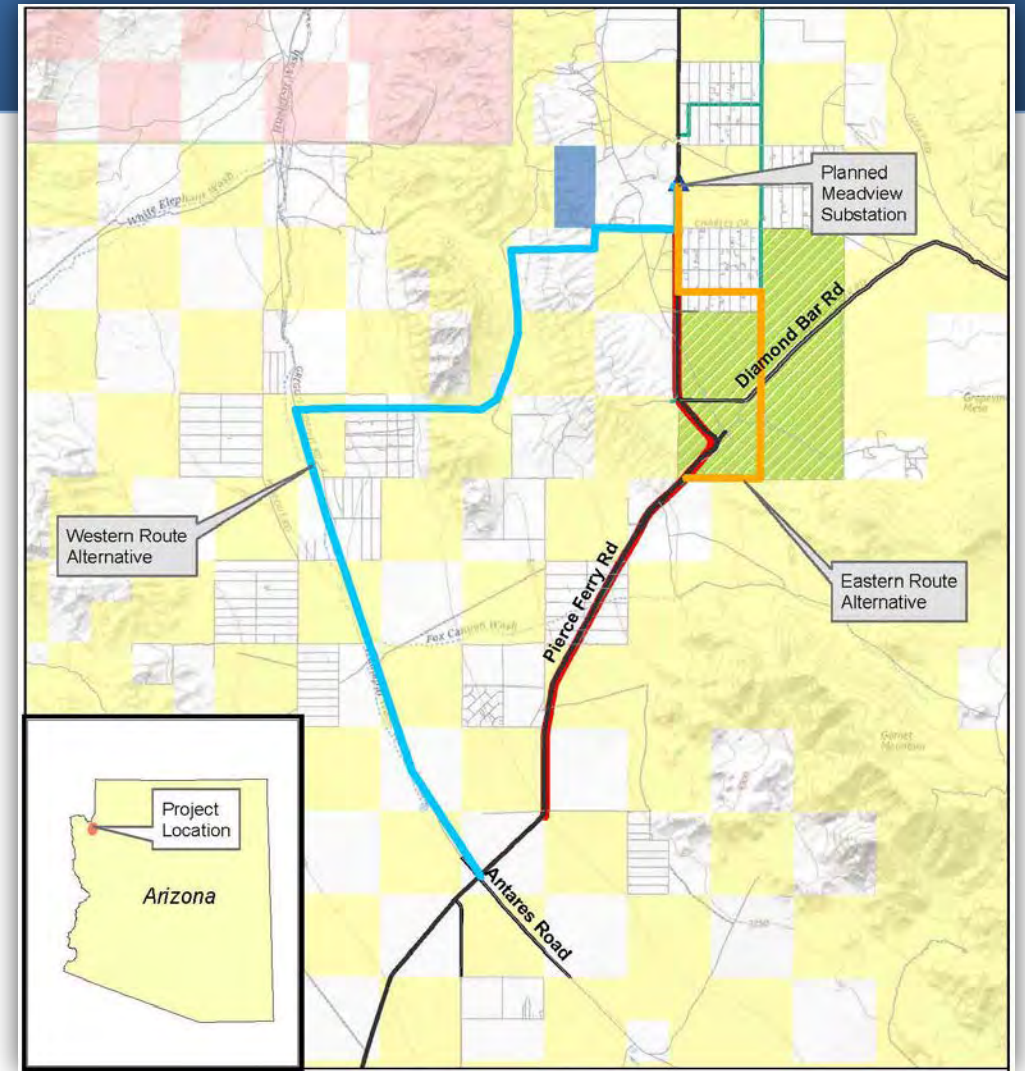
NEPA PROCESS

- Requirement for BLM, as a Federal agency, to comply with National Environmental Policy Act (1970) NEPA, which requires:
 - obtaining public comment
 - conducting resource surveys
 - reviewing potential impacts to the environment
- Public scoping to solicit comment from interested parties, stakeholders, e.g.:
 - Federal agencies
 - State agencies
 - County agencies
 - Local agencies (e.g., cities, towns)
 - Community organizations



NEPA PROCESS

- Review potential Alternatives to meet the Project purpose and need, including the No Action
- Alternatives dismissed from analysis:
 - Western route (blue): would go through undisturbed native habitat
 - Eastern route (orange): building new line in this location would disturb the Joshua Tree NNL
- EA will analyze and disclose the environmental impacts of the proposed project
- Result in Decision Record (DR) and Finding of no Significant Impact (FONSI) (if appropriate)



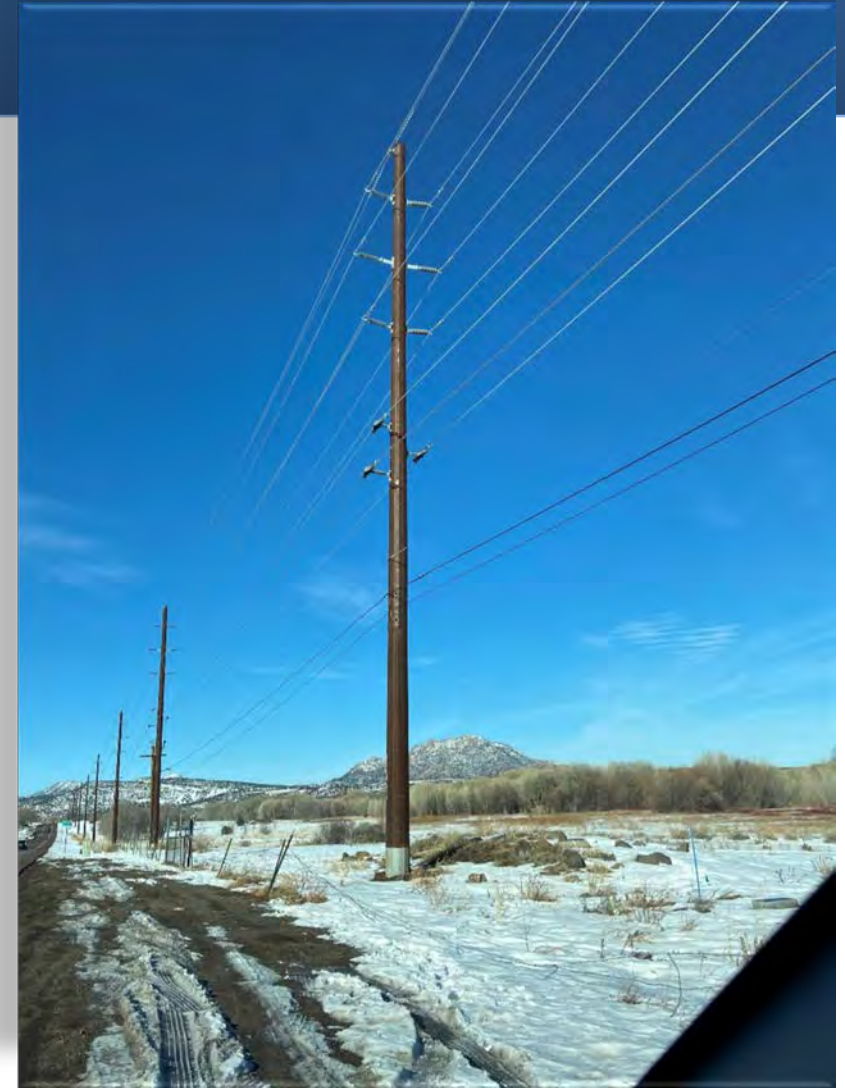
PURPOSE AND NEED

- Improve power quality and reliability for customers in Meadview, Arizona
 - Existing distribution line does not carry enough voltage to provide sufficient power to meet the needs in Meadview
 - Transmission line, carrying higher voltage, will provide the required power to support customers in Meadview
 - Maintain constant voltage to eliminate drops and surges in power
- Strengthen the local energy grid
- Create a system to remove the need for temporary generators



REPRESENTATIVE STRUCTURES

- Pole structure types: steel monopole, 75' +/-
- One upper set of 3 wires (3 phase) and one lower set of distribution wires (3 phase)
- Existing distribution line wooden poles to be removed





CURRENT STATUS

- BLM NEPA Compliance – initiated Sep 2021
 - Public scoping – in process; public scoping document was distributed September 20, 2021
 - Cultural Resources Survey – in process 2021
 - Biological Resources Survey – in process 2021
 - Land Survey – preliminary survey completed 2021
- Meadview Substation – land acquisition and design in process
- Dolan Springs Substation to Antares 69kV – in construction





NEXT STEPS

- Complete public scoping and receive comments through October 20, 2021
- Complete cultural and biological surveys
- Conduct a visual resource survey
- Prepare Environmental Assessment (EA) for BLM review, public review and comment: Q4 2021
- BLM to Finalize EA, issue a FONSI, and DR (if appropriate)
- BLM issues amended ROW grant
- UNSE initiates construction: Q3 2022
- UNSE coordinates Native Plant salvage within ACEC
- Energized/in-service: Q1 2023





COMMENTS?

- Submit comments by:
 - Project website online form
 - <https://www.uesaz.com/antares-meadview/>
 - Email: AntaresMeadview69kV@uesaz.com
 - Mail:

UNSE Antares-Meadview
c/o DockIt Consulting
PO Box 2706
Oak Harbor, WA 98277

The screenshot shows the UniSource Energy Services website. The header includes the company logo and navigation links: Accounts & Services, Renewable Energy, Energy Efficiency, Community, and What's New. The main heading is "Antares to Meadview 69 Kilovolt Transmission Line Project". Below this, a paragraph states: "UniSource Energy Services has proposed building a new approximately 10-mile transmission line to strengthen the local energy grid and improve power quality and reliability for customers in the community of Meadview, located northwest of Kingman, Arizona. UNS Electric, Inc. (UNSE), a subsidiary of UniSource Energy Services, has requested an amendment to an existing right of way from the Bureau of Land Management (BLM) to support the proposed Antares-Meadview 69 Kilovolt (kV) Transmission Line Project." To the right, there is a "Project Information" section with a map and two links: "Route Overview Map" and "Comment Form".



CONTACT INFORMATION

- **BLM**

- Maria Nicoletti
- mnicoletti@blm.gov
- 928-718-3719

- **UNSE**

- Leslie Carpenter
- lcarpenter@tep.com
- 520-419-9684

