

GOLDEN VALLEY 230 KILOVOLT TRANSMISSION LINE PROJECT

Fact Sheet – June 2019

UNS Electric, Inc. (UNSE), a subsidiary of UniSource Energy Services, has requested a grant of right-of-way from the Bureau of Land Management (BLM) for their proposed Golden Valley 230 Kilovolt (kV) Transmission Line Project (Project), an approximately 20-mile line that would improve reliability, replace aging equipment, and help meet Mohave County customers’ future energy needs.

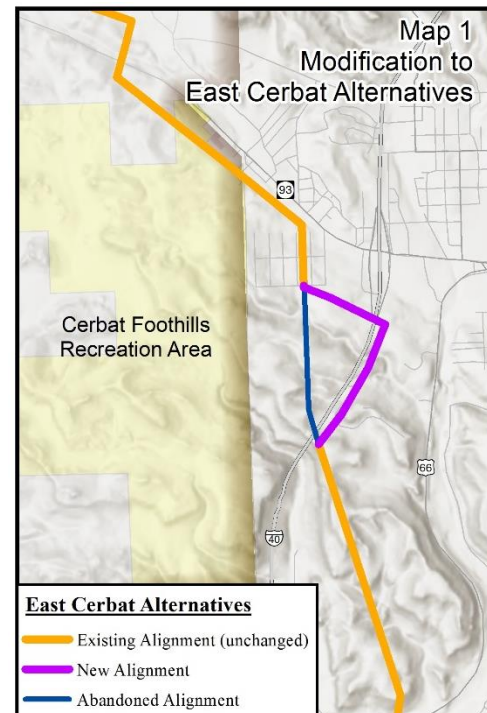
UNSE has provided project details to the BLM and has been working with the BLM to refine alternative alignments. The BLM Kingman Field Office is currently drafting an Environmental Assessment (EA), which is required to comply with the National Environmental Policy Act (NEPA) and other relevant regulations. This analysis considers how the Project could affect land use, natural resources, cultural resources, visual resources, socioeconomic conditions, and other factors.

The Project is still under review with the BLM. The BLM is considering six alternative alignments (see Map 2). The two East Cerbat alternatives generally follow U.S. Route 93 through the Cerbat Foothills Recreation Area. The four West Cerbat alternatives continue along, north of, or south of Shinarump Drive and then extend north along the western edge of the Cerbat Foothills Recreation Area.

UNSE recently modified the East Cerbat alternative alignments (see Map 1) to cross Interstate 40 (I-40) at the same location as an existing UNSE-owned 69kV transmission line, minimizing visual impacts and keeping transmission lines within a common corridor. The updated alignment would cross I-40 approximately one half-mile north of their original alignments.

PROJECT PERMITTING

The draft EA is expected to be completed in late 2019. Once the EA is published, the public will have 30 days to submit comments. When the draft EA is available for review, notification will be sent via mail to the Project notification list.

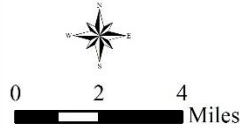
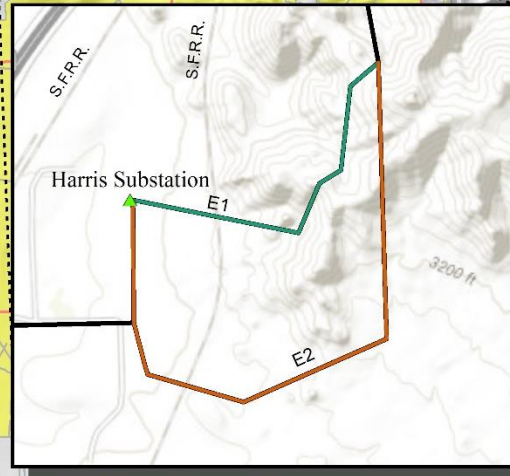
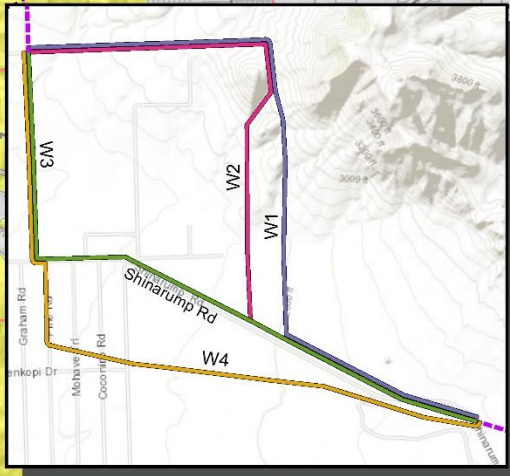
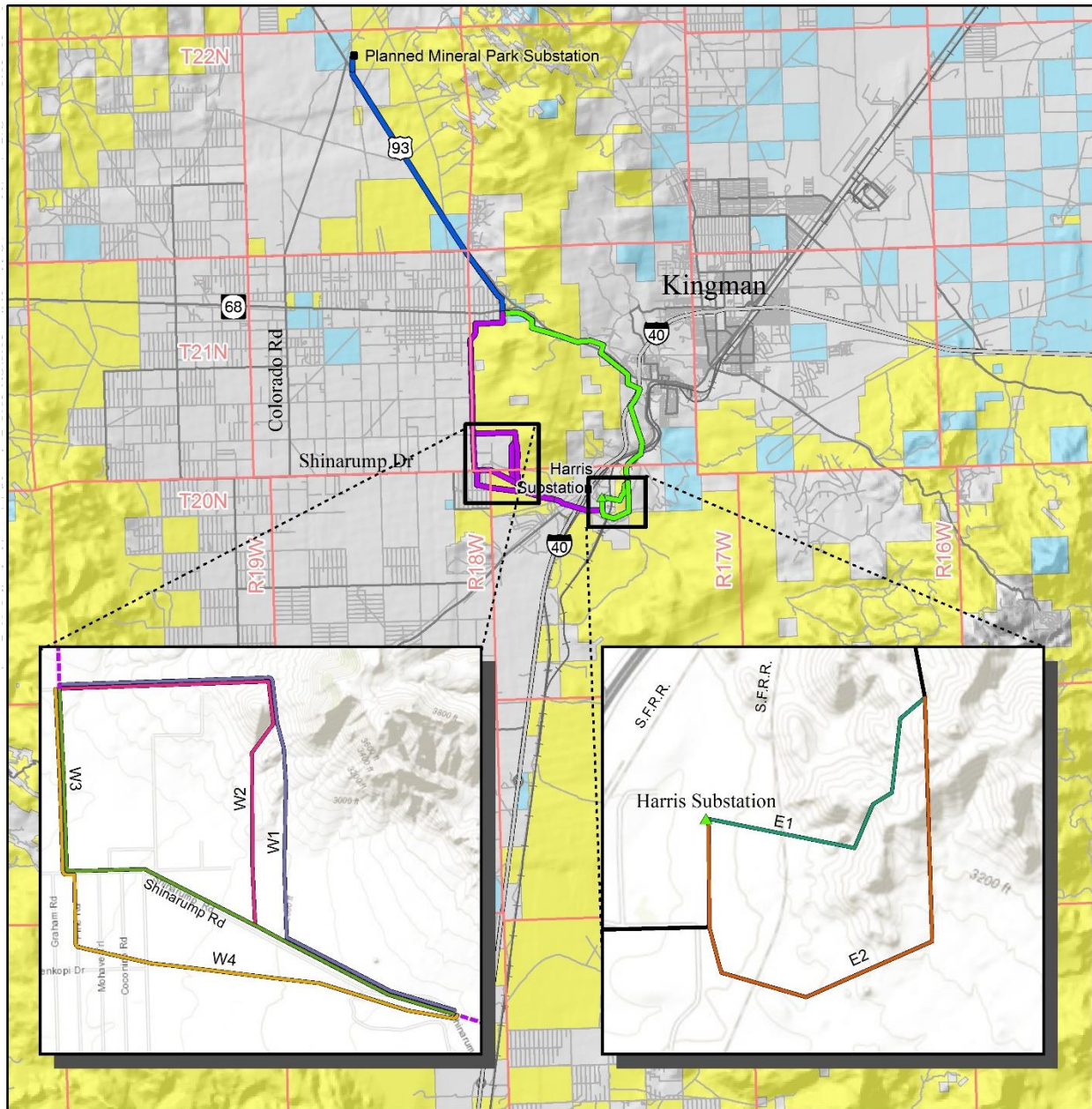


The Arizona Corporation Commission (ACC) must approve a Certificate of Environmental Compatibility (CEC) for the Project before it can be built. After UNSE applies for a CEC, the Arizona Power Plant and Transmission Line Siting Committee will review the application in a public process that includes opportunities for the public to provide comments. If the applicant is successful, the Line Siting Committee will send a proposed CEC to the ACC for final review and approval. The schedule for the CEC process will depend on timing and results of the EA.

Learn more: <https://www.uesaz.com/golden-valley/>

GOLDEN VALLEY 230 KILOVOLT TRANSMISSION LINE PROJECT

Fact Sheet – June 2019



- Legend**
- Common to all alternatives
 - East Cerbat Alternatives
 - West Cerbat Alternatives
 - Bureau of Land Management
 - Private Land
 - State Trust Land

**Map 2
Project Vicinity**

Golden Valley 230kV
Transmission Line Project

UNS Electric