

GOLDEN VALLEY 230KV TRANSMISSION LINE PROJECT

Project Fact Sheet – March 2017 Update

BACKGROUND INFORMATION AND PROJECT UPDATE

UNS Electric (UNSE), a subsidiary of UniSource Energy Services, delivers electric service to more than 80,000 customers in Mohave County, Arizona. In order to improve reliability, replace aged equipment and accommodate future customer electricity demands, UNSE proposes to construct a new 230 kilovolt (kV) electrical transmission line and substation near Golden Valley and Kingman, Arizona. This project, which is being called the Golden Valley 230kV Transmission Line Project (project), would be located on lands managed by the Bureau of Land Management (BLM), the State of Arizona, the City of Kingman, and on private land (see maps on pages 3-5). The new transmission line would originate at the Harris Substation, located southwest of Kingman, and extend north nearly 20 miles to an area near the intersection of Mineral Park Road and U.S. Route 93 at the proposed Mineral Park Substation. The tables on the right compare alternative routes and describe each in relation to BLM-designated utility corridors, existing transmission lines and UNSE rights-of-way.

In June 2016, two public meetings were held in Kingman and Golden Valley, Arizona, to inform residents about the proposed project, answer questions, and accept public comments. Comments also were accepted via U.S. Postal Service and email through August 8, 2016. The scoping period was extended from July 28, 2016 to allow for additional input. The BLM received more than 60 comments raising over 160 concerns (see pie chart on page 2).

The BLM Kingman Field Office is currently drafting an Environmental Assessment (EA), which is required to comply with the National Environmental Policy Act (NEPA) and other relevant regulations. The EA, which will consider comments received from the public and other agencies, will analyze each alternative and potential impacts on biological resources, land use, socioeconomics including property values, visual resources and other resources.

Four alternatives were presented at the June 2016 public meetings. The BLM added two additional alternatives for consideration and analysis after reviewing public comments. E1 and E2 Alternatives, referred to as the East Cerbat Alternatives, follow U.S. Route 93 through the Cerbat Foothills Recreation Area. The West Cerbat Alternatives are partially comprised of the W1 and W2 Alternatives, which follow the western edge of the Cerbat Foothills Recreation Area. Also part of the West Cerbat Alternatives are the W3 and W4 Alternatives, which the BLM added after reviewing public comments. The W3 Alternative would follow the north side of Shinarump Road and turn north to follow Tooman Road, and the W4 Alternative, which generally follows the Western Area Power Administration Davis–Prescott Transmission Line alignment located south of Shinarump Road, turns north to follow Pine Road and continues north along Tooman Road (see maps on pages 3-5).

MILES OF ALTERNATIVES BY LAND OWNERSHIP				
SEGMENT	PRIVATE	BLM	STATE	TOTAL LENGTH
<i>WEST CERBAT ALTERNATIVES</i>				
W1	7.5	8.9	1.2	17.6
W2	7.5	9.0	1.2	17.7
W3	9.0	7.2	1.2	17.4
W4	9.4	7.0	1.2	17.6
<i>EAST CERBAT ALTERNATIVES</i>				
E1	10.5	4.4	1.8	16.7
E2	11.1	4.8	1.8	17.7

ALTERNATIVES COMPARISON	
WITHIN A BLM-DESIGNATED UTILITY CORRIDOR	
<i>WEST CERBAT ALTERNATIVES</i>	
W1	68%
W2	68%
W3	75%
W4	75%
<i>EAST CERBAT ALTERNATIVES</i>	
E1	100%
E2	100%
PARALLEL TO AN EXISTING TRANSMISSION LINE	
<i>WEST CERBAT ALTERNATIVES</i>	
W1	50%
W2	50%
W3	51%
W4	60%
<i>EAST CERBAT ALTERNATIVES</i>	
E1	72%
E2	72%
WITHIN A UNSE-TRANSMISSION LINE RIGHT-OF-WAY	
<i>WEST CERBAT ALTERNATIVES</i>	
W1	44%
W2	44%
W3	45%
W4	44%
<i>EAST CERBAT ALTERNATIVES</i>	
E1	72%
E2	68%

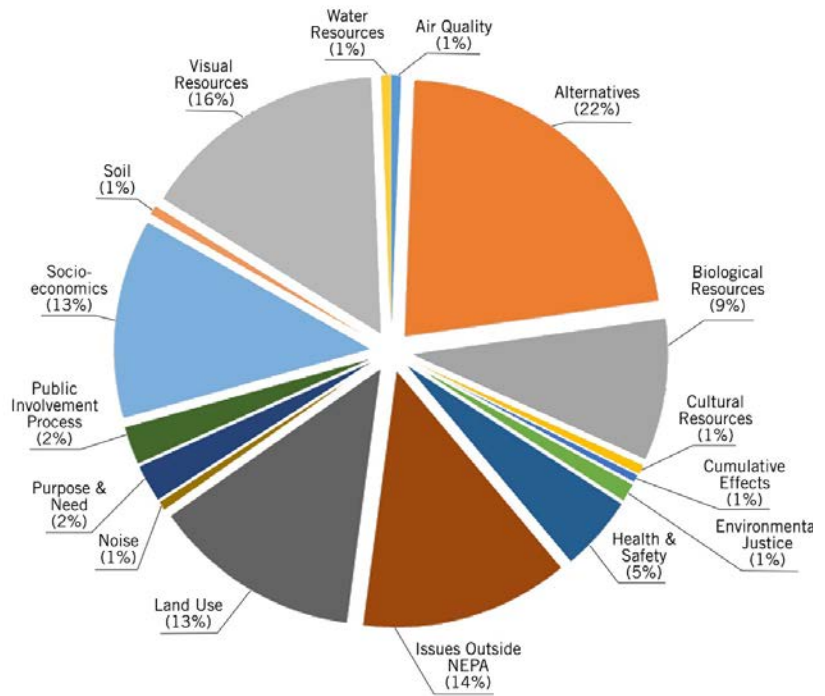
GOLDEN VALLEY 230KV TRANSMISSION LINE PROJECT

Project Fact Sheet – March 2017 Update

PROJECT TIMELINE

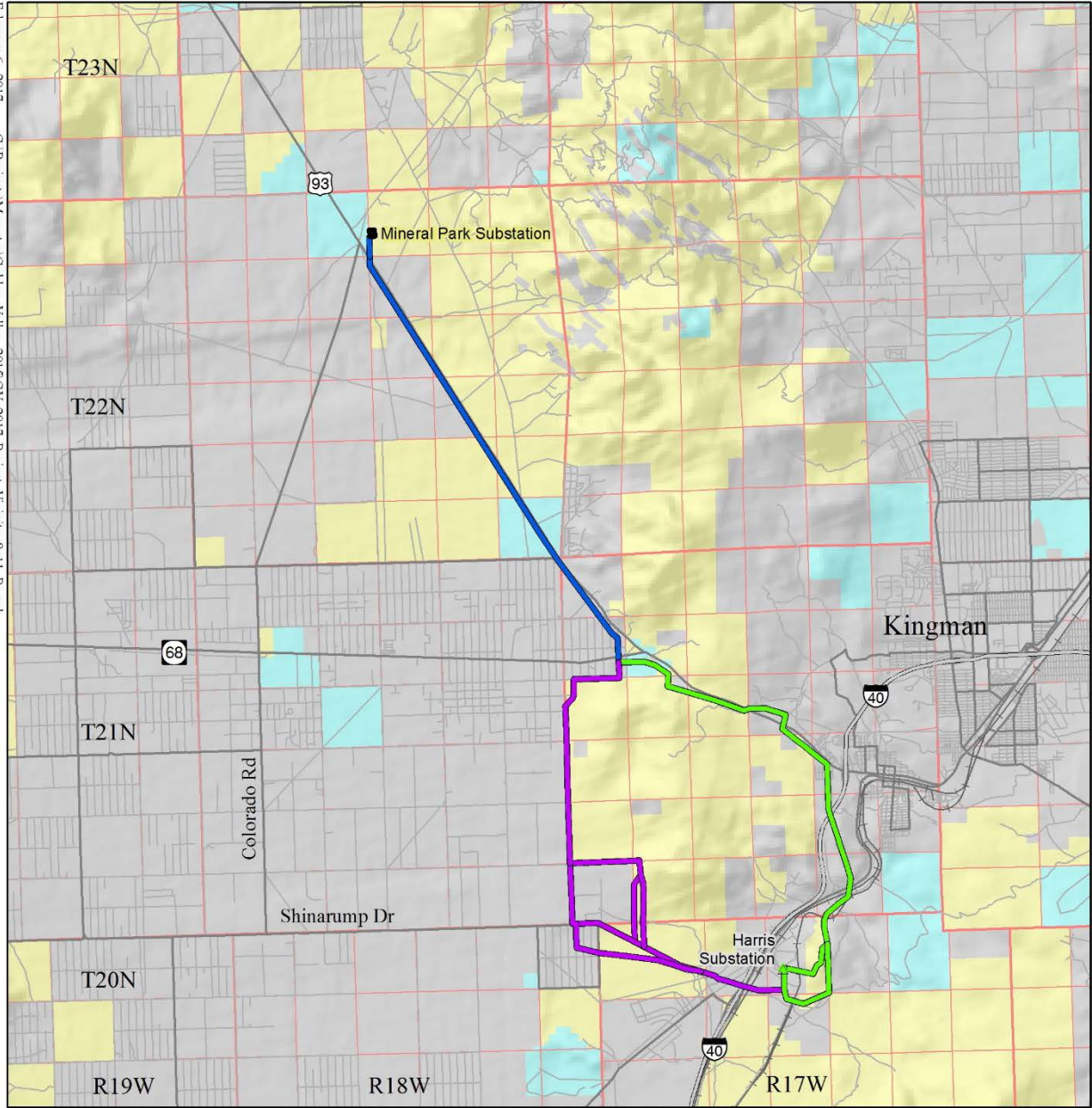
The first phase of public and agency scoping started in June 2016 and comments were collected until August 2016. Environmental studies were conducted through 2016 and into 2017. Once the draft EA is published, which is projected to occur in June, the public will have 30 days to submit comments. An additional notification will be sent when the draft EA is available for public review. Transcon Environmental, an Arizona-based environmental consulting firm, is assisting UNSE with siting and environmental compliance activities. The Arizona Corporation Commission (ACC) Arizona Power Plant and Transmission Line Siting Committee must review the project for environmental compatibility through their Certificate of Environmental Compatibility (CEC) process. There is currently no schedule for submitting an application to the ACC, although it is expected an application will be submitted following completion of the NEPA process, which will occur once a final EA is published.

Subject Matter of Concerns Raised by Commenters



FOR ADDITIONAL INFORMATION

Another notification will be mailed once the draft EA is published. The project website (uesaz.com/projects/transmission/golden/) has additional information including an interactive map for viewing the project alternatives. If you have questions regarding this project, contact Mr. Andy Whitefield, BLM Project Manager, at (928) 718-3746 or awhitefi@blm.gov.

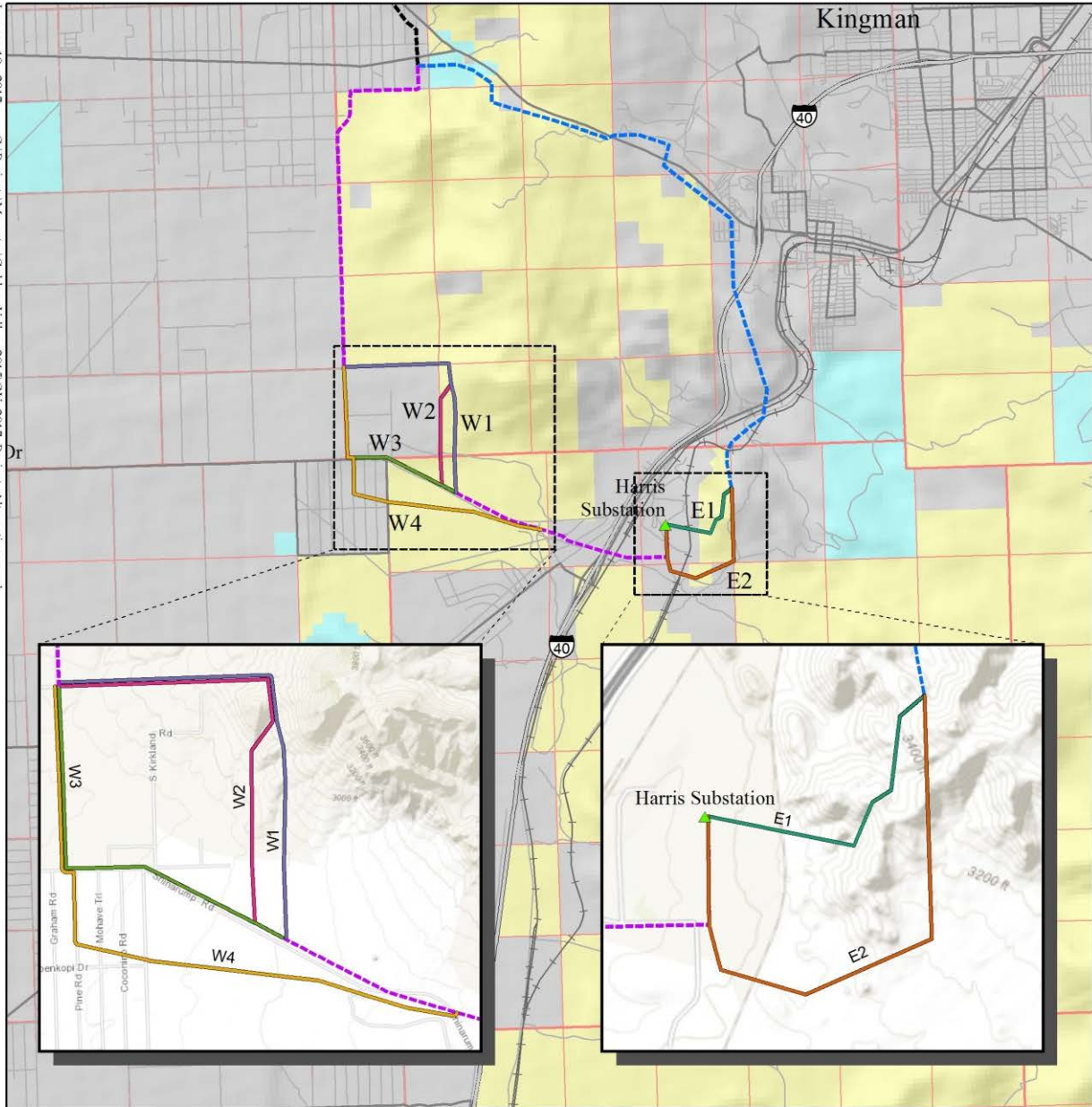


Legend

- Common Alignment
- East Cerbat Alternatives
- West Cerbat Alternatives

Project Vicinity Map

Golden Valley 230kV
Transmission Line Project
UNS Electric



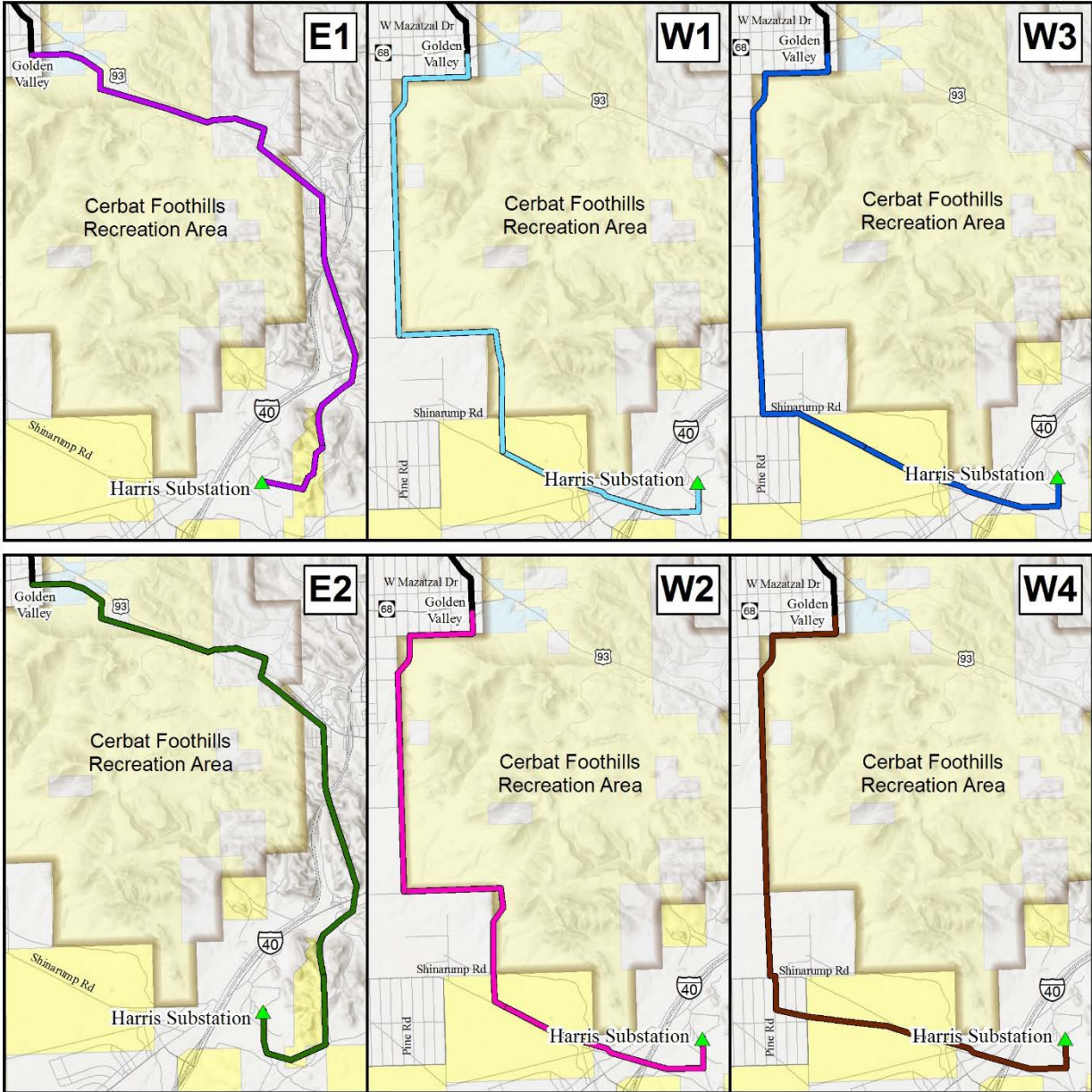
Legend

- E1
- E2
- Common alignment (East Cerbat Alts)
- W1
- W2
- W3
- W4
- Common alignment (West Cerbat Alts)
- Common alignment (all alts)

Project Alternatives

Golden Valley 230kV
Transmission Line Project

UNS Electric



ARIZONA
Project Location

Legend

- E1
- E2
- W1
- W2
- W3
- W4
- Common alignment
- ▲ Existing Substation

- Arizona Game and Fish Department
- Bureau of Land Management
- Private Land
- State Trust Land

Golden Valley Alternatives

Golden Valley 230kV
Transmission Line Project

UNS Electric

0 9,000 Feet