

# **EXHIBIT A**

## EXHIBIT A – LOCATION AND LAND USE MAPS

---

As stated in Exhibit A of Exhibit 1 to the Rules of Practice and Procedure Before Power Plant and Transmission Line Siting Committee:

1. ***“Where commercially available, \*\* a topographic map, 1:250,000 scale, showing the proposed plant site and the adjacent area within 20 miles thereof. If application is made for alternative plant sites, all sites may be shown on the same map, if practicable, designated by applicant's order of preference.”***
2. ***“Where commercially available,\*\* a topographic map, 1:62,500 scale, or each proposed plant site, showing the area within two miles thereof. The general land use plan within this area shall be shown on the map, which shall also show the areas of jurisdiction affected and any boundaries between such areas of jurisdiction. If the general land use plan is uniform throughout the area depicted, it may be described in the legend in lieu of an overlay.”***
3. ***“Where commercially available,\*\* a topographic map, 1:250,000 scale, showing any proposed transmission line route of more than 50 miles in length and the adjacent area. For routes of less than 50 miles in length, use a scale of 1:62,500. If application is made for alternative transmission line routes, all routes may be shown on the same map, if practicable, designated by applicant’s order of preference.”***
4. ***“Where commercially available,\*\* a topographic map, 1:62,500 scale, of each proposed transmission line route of more than 50 miles in length showing that portion of the route within two miles of any subdivided area. The general land use plan within the area shall be shown on a 1:62,500 map required for Exhibit A-3, and for the map required by this Exhibit A-4, which shall also show the areas of jurisdiction affected and any boundaries between such areas of jurisdiction. If the general land use plan is uniform throughout the area depicted, it may be described in the legend in lieu of on an overlay.”***

---

\*\* If a topographic map is not commercially available, a map of similar scale, which reflects prominent or important physical features of the area in the vicinity of the proposed site or route shall be substituted.

The following maps are provided pursuant to Exhibit A.

Exhibit A-1	Overview Map of Plant Sites (Not Applicable)
Exhibit A-2	Jurisdiction and Land Use Maps for Plant Sites (Not Applicable)
Exhibit A-3	Overview Map of CEC Transmission Facilities
Exhibit A-3(a)	Jurisdiction and Land Use Map for the Nogales Interconnection Project Alternative Route 1
Exhibit A-3(b)	Jurisdiction and Land Use Map for the Nogales Interconnection Project Alternative Route 2
Exhibit A-3(c)	Jurisdiction and Land Use Map for the Nogales Interconnection Project Alternative Route 3
Exhibit A-3(d)	Jurisdiction and Land Use Map for the Nogales Interconnection Project Alternative Route 4
Exhibit A-3(e)	Jurisdiction and Land Use Map for the Nogales Tap to Kantor Upgrade Project Alternative Route 1
Exhibit A-3(f)	Jurisdiction and Land Use Map for the Nogales Tap to Kantor Upgrade Project Alternative Route 2
Exhibit A-3(g)	Jurisdiction and Land Use Map for the Nogales Tap to Kantor Upgrade Project Alternative Route 3
Exhibit A-4	Maps of Proposed 1,000-Foot Certificated Corridor for CEC Transmission Facilities
Exhibit A-4(a)	Proposed 1,000-Foot Certificated Corridor for the Nogales Interconnection Project Alternative Route 1
Exhibit A-4(b)	Proposed 1,000-Foot Certificated Corridor for the Nogales Interconnection Project Alternative Route 2
Exhibit A-4(c)	Proposed 1,000-Foot Certificated Corridor for the Nogales Interconnection Project Alternative Route 3
Exhibit A-4(d)	Proposed 1,000-Foot Certificated Corridor for the Nogales Interconnection Project Alternative Route 4
Exhibit A-4(e)	Proposed 1,000-Foot Certificated Corridor for the Nogales Tap to Kantor Upgrade Project Alternative Route 1

Exhibit A-4(f)	Proposed 1,000-Foot Certificated Corridor for the Nogales Tap to Kantor Upgrade Project Alternative Route 2
Exhibit A-4(g)	Proposed 1,000-Foot Certificated Corridor for the Nogales Tap to Kantor Upgrade Project Alternative Route 3

Exhibit A-3 provides an overview of the CEC Transmission Facilities. Exhibits A-3(a) through A-3(d) and A-3(e) through A-3(g) show land use, the areas of affected jurisdictions, and any boundaries between such areas of jurisdiction for the alternative routes for the Nogales Interconnection Project and the Nogales Tap to Kantor Upgrade Project, respectively.

Exhibits A-4(a) through A-4(d) and A-4(e) through A-4(g) show the proposed 1,000-foot certificated corridor (500 feet on either side of the centerline, except in certain circumstances where constraints prevent the full 1,000-foot corridor) for the alternative routes for the Nogales Interconnection Project and the Nogales Tap to Kantor Upgrade Project, respectively. Exhibit A-4(c) shows an example of Applicants' proposed exception to the 1,000-foot certificated corridor for route segment variations 11, 13, and 15 of the Nogales Interconnection Project, whereby the western buffer area would not include Coronado National Forest land.

Pursuant to Footnote 1 of Exhibit 1 to the Rules of Practice and Procedure Before Power Plant and Line Siting Committee, Applicants refer the Committee to the following studies for additional analysis of land use and zoning in the vicinity of the Nogales Interconnection Project:

- Exhibit B-1(a): PP EA (Section 3.1)
- Exhibit B-1(b): DOE Draft EA (Sections 3.6.1, 3.6.2, 3.6.3)
- Exhibit H: Land Use

## **Exhibit A-1 – Overview Map of Plant Sites (Not Applicable)**

---

Exhibit A-1 is not required because Applicants' CEC Transmission Facilities do not include generation plant sites.

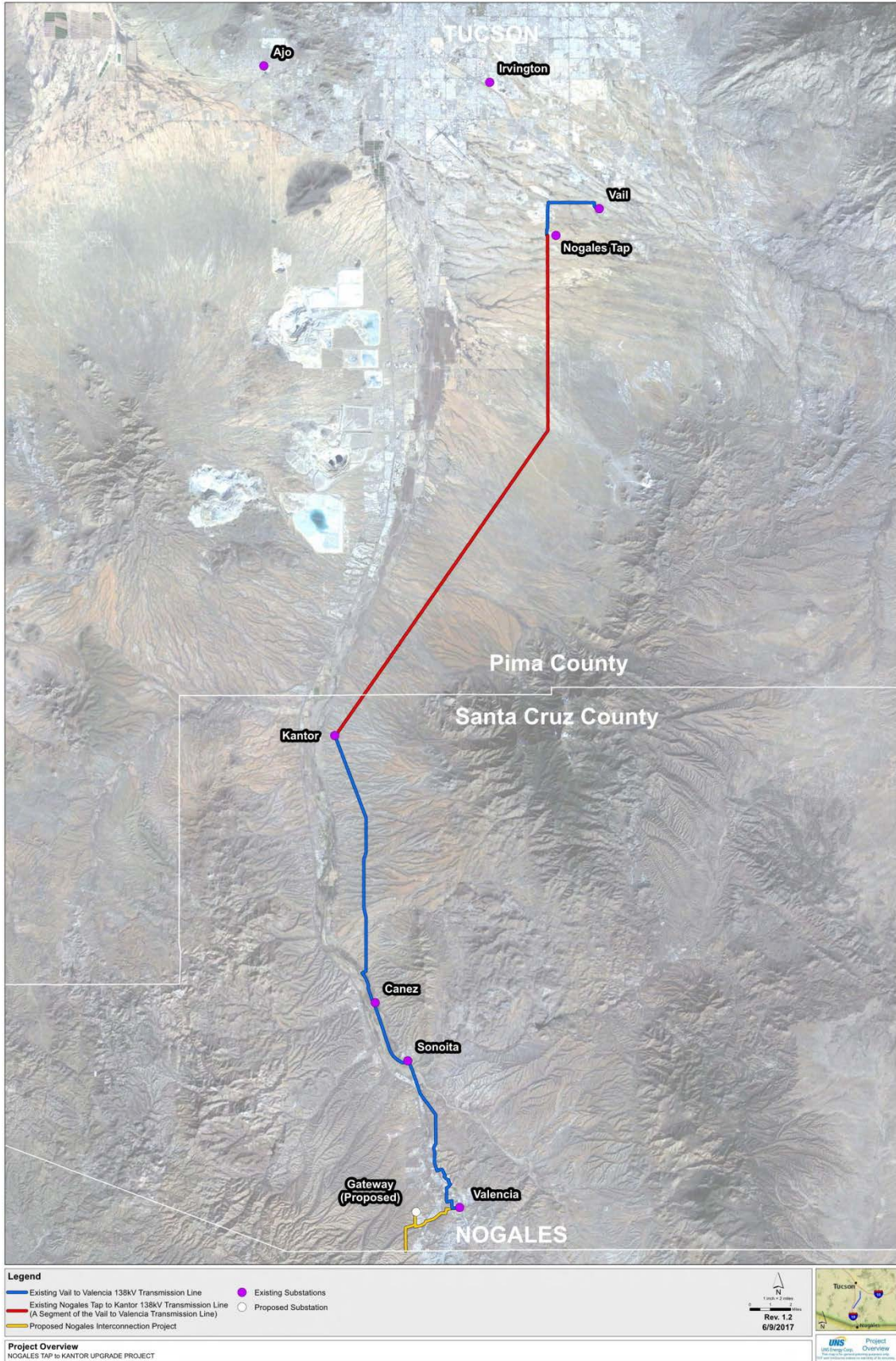
## **Exhibit A-2 – Jurisdiction and Land Use Maps for Plant Sites (Not Applicable)**

---

Exhibit A-2 is not required because Applicants' CEC Transmission Facilities do not include generation plant sites.

# Exhibit A-3 – Overview Map of CEC Transmission Facilities

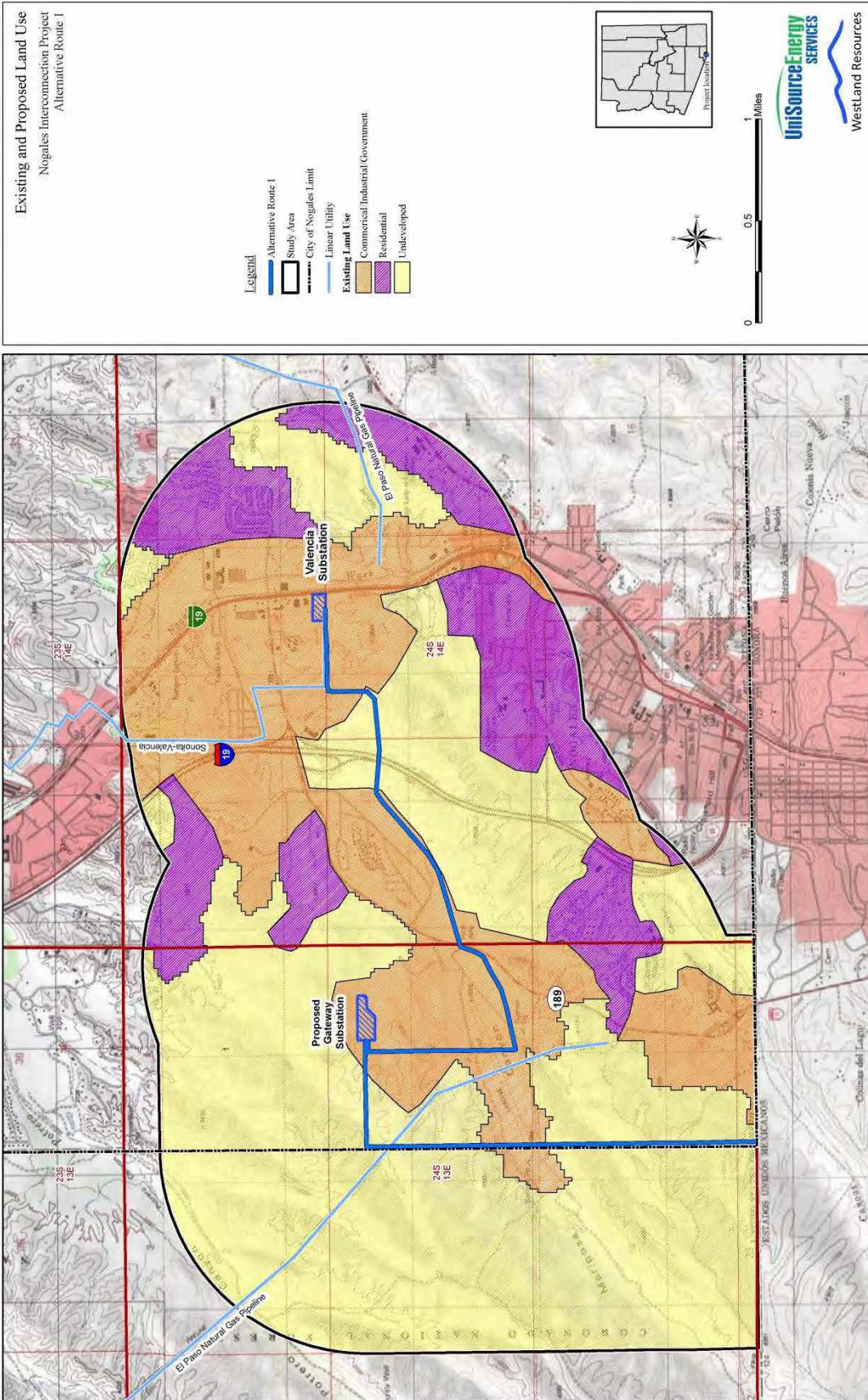
---





## **Exhibit A-3(a) – Land Use Map for the Nogales Interconnection Project Alternative Route 1**

---



## **Exhibit A-3(b) – Land Use Map for the Nogales Interconnection Project Alternative Route 2**

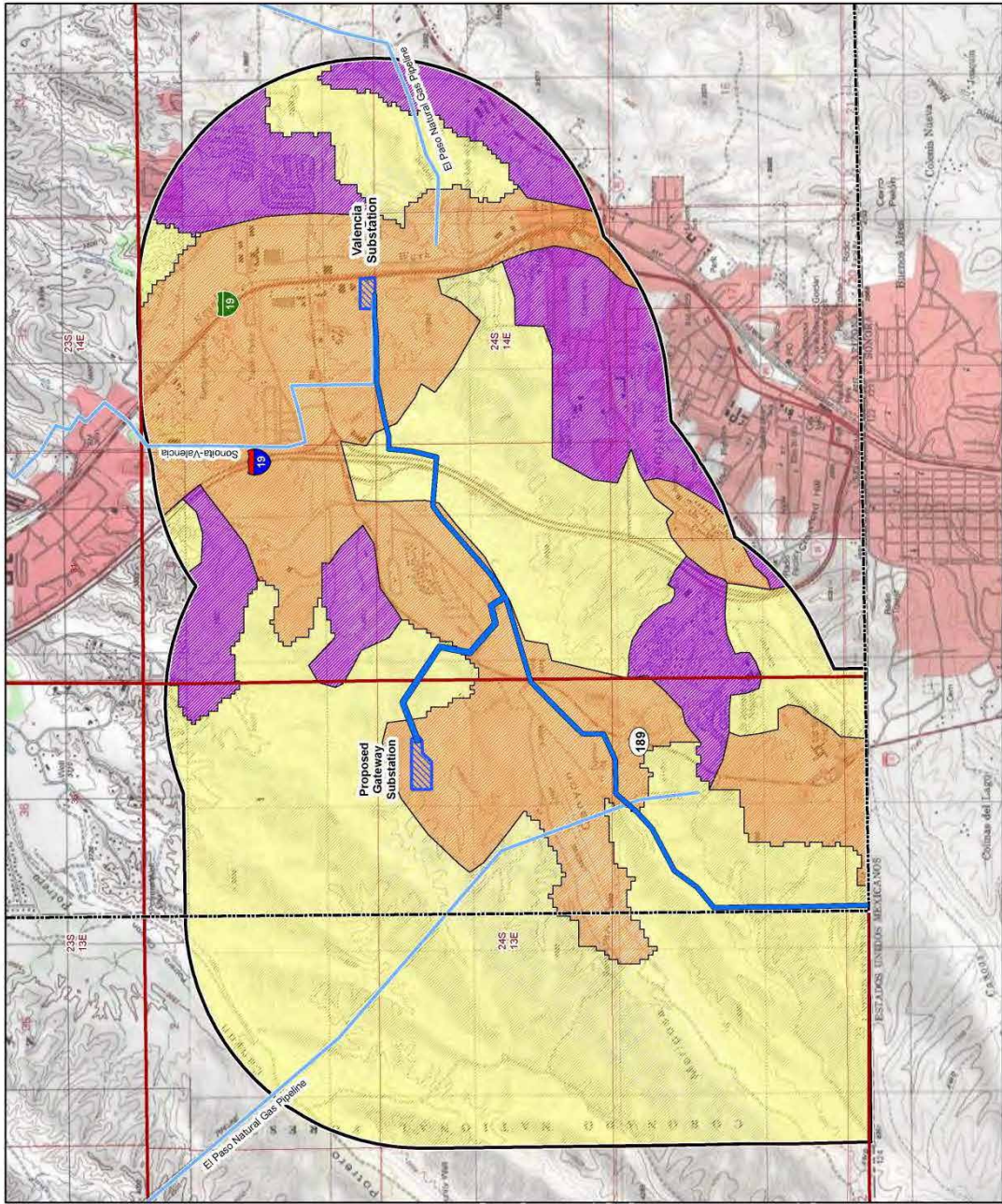
---

**Existing and Proposed Land Use**  
 Nogales Interconnection Project  
 Alternative Route 2

**Legend**

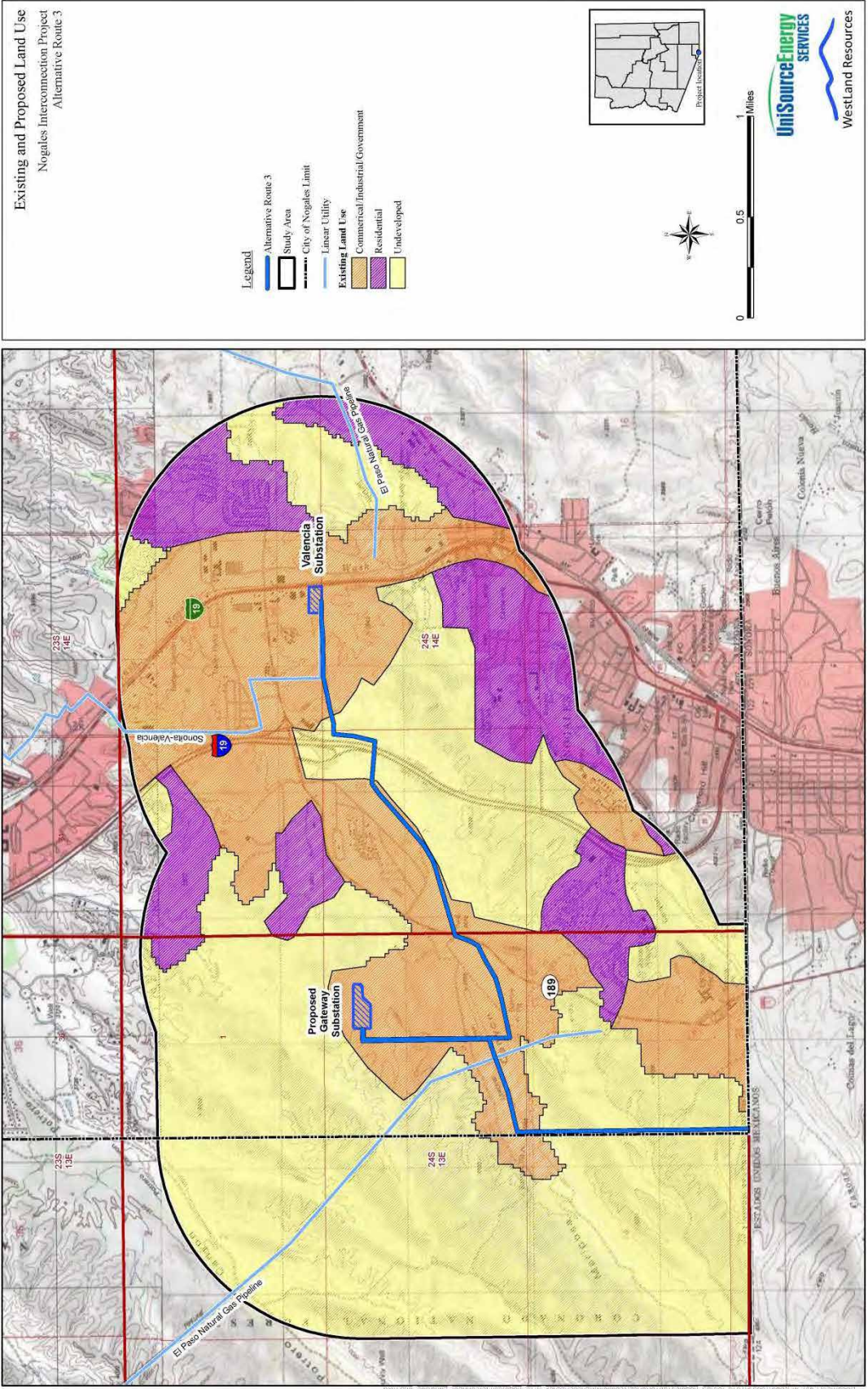
- Alternative Route 2
- Study Area
- City of Nogales Limit
- Linear Utility
- Existing Land Use
  - Commercial/Industrial/Government
  - Residential
  - Undeveloped

North arrow and scale bar (0 to 1 mile).  
 UniSourceEnergy SERVICES  
 WestLand Resources



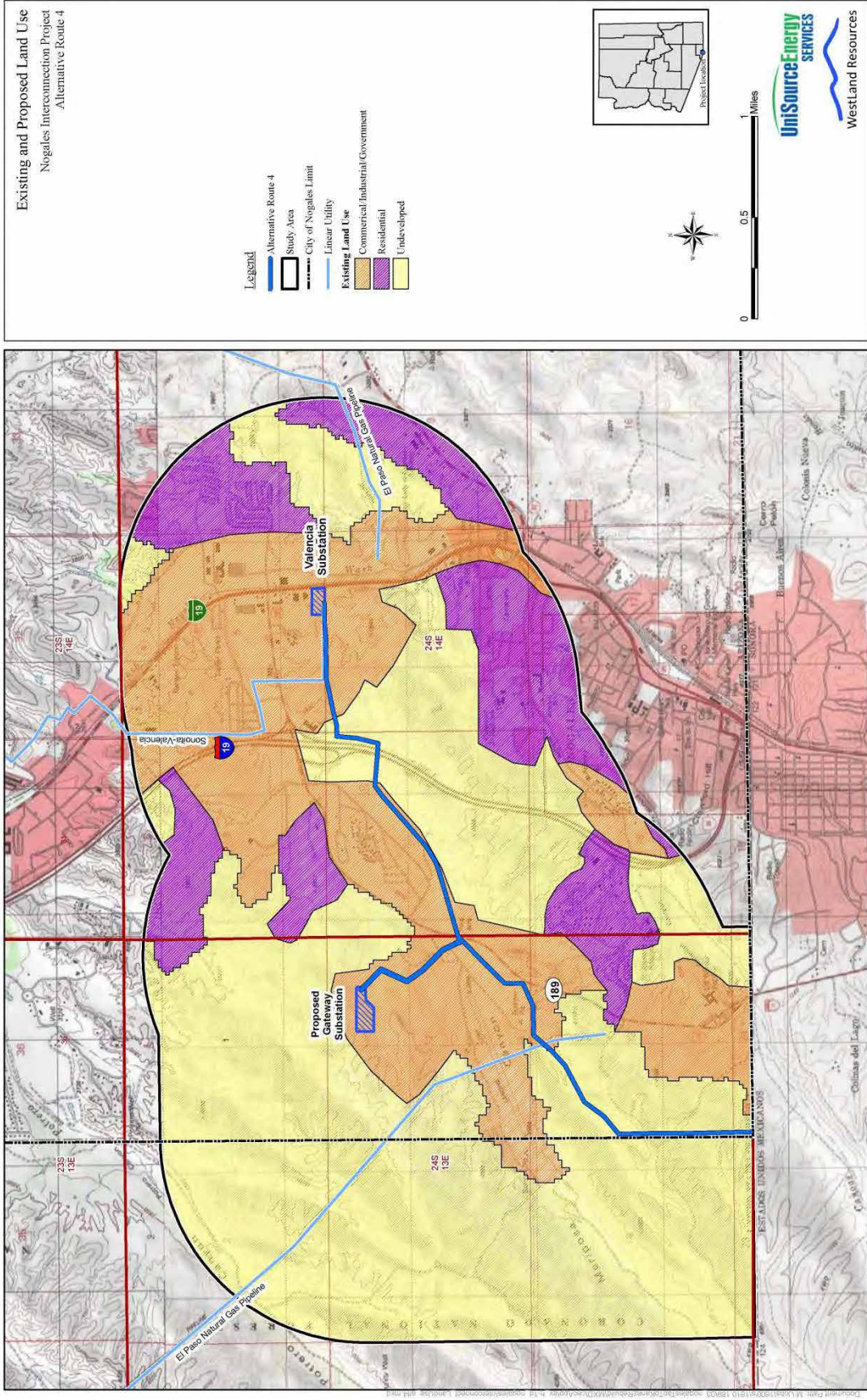
## **Exhibit A-3(c) – Land Use Map for the Nogales Interconnection Project Alternative Route 3**

---



## **Exhibit A-3(d) – Land Use Map for the Nogales Interconnection Project Alternative Route 4**

---





## **Exhibit A-3(e) – Land Use Map for the Nogales Tap to Kantor Upgrade Alternative Route 1**

---

**Existing and Proposed Land Ownership**  
 Nogales Tap to Kantor Upgrade Project  
 Alternative Route 1

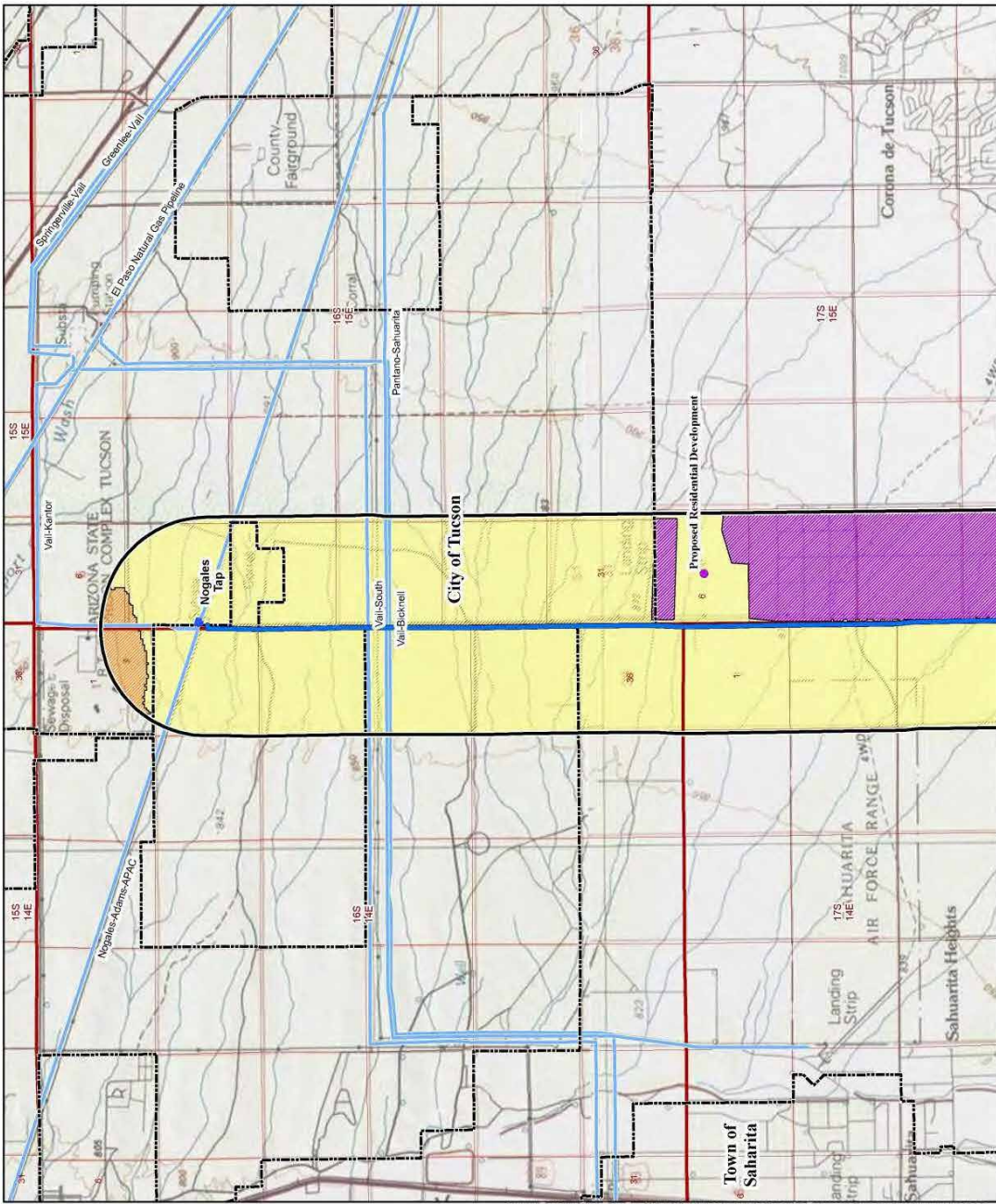
**Legend**

- Alternative Route 1
- Study Area
- City Limit
- Linear Utility
- Existing Land Use**
  - Commercial/Industrial Government
  - Residential
  - Undeveloped
- Proposed Land Use
  - Proposed Residential Development

Scale: 0 to 2 miles

Map Panel 1 of 3

Logos: UniSourceEnergy SERVICES, WestLand Resources



**Existing and Proposed Land Ownership**  
 Nogales Tap to Kantor  
 Upgrade Project  
 Alternative Route 1

**Legend**

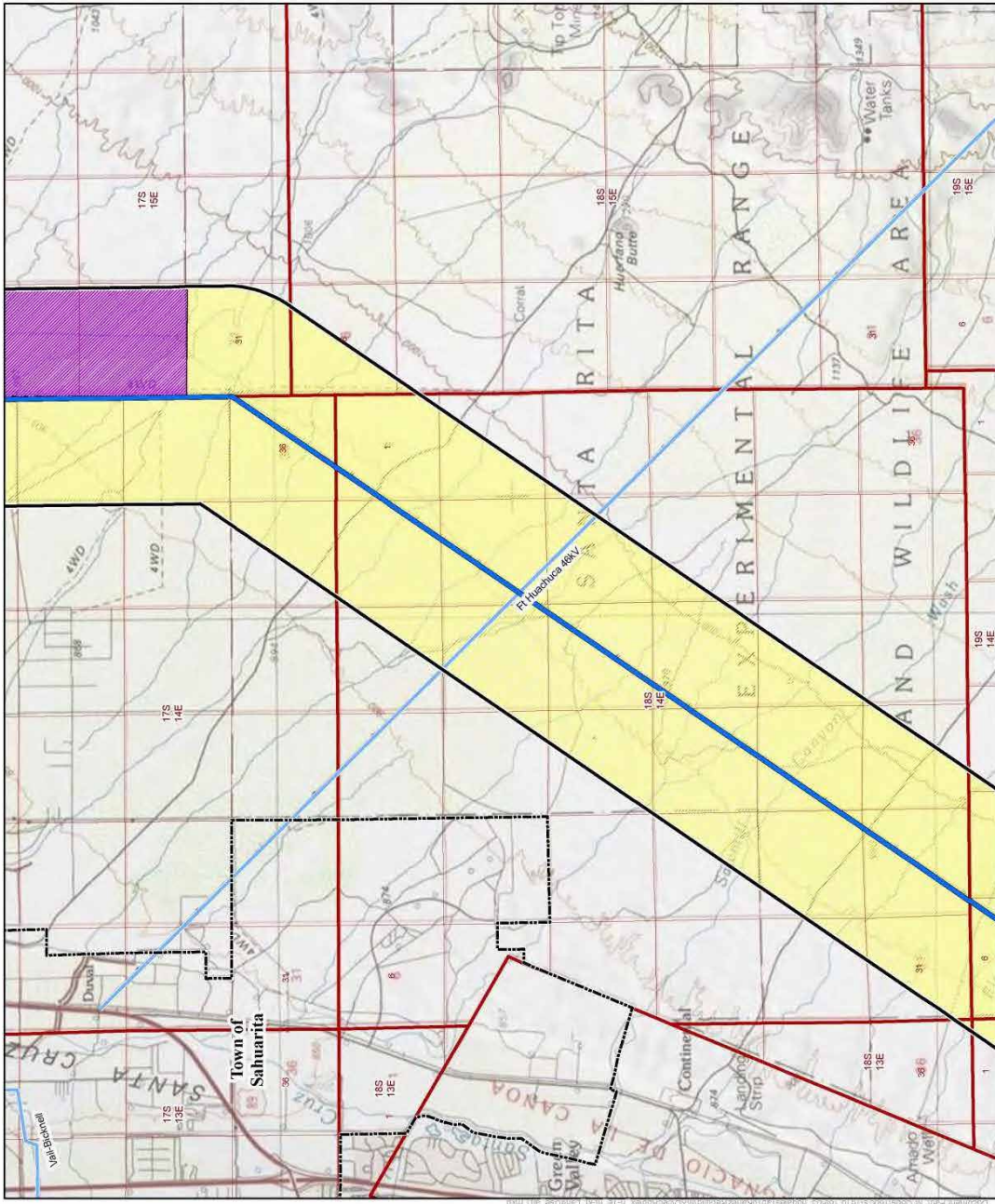
- Alternative Route 1
- Study Area
- City Limit
- Linear Utility
- Existing Land Use
- Residential
- Undeveloped

0 1 2 Miles

UniSourceEnergy SERVICES

WestLand Resources

MAP PANEL 2 of 3



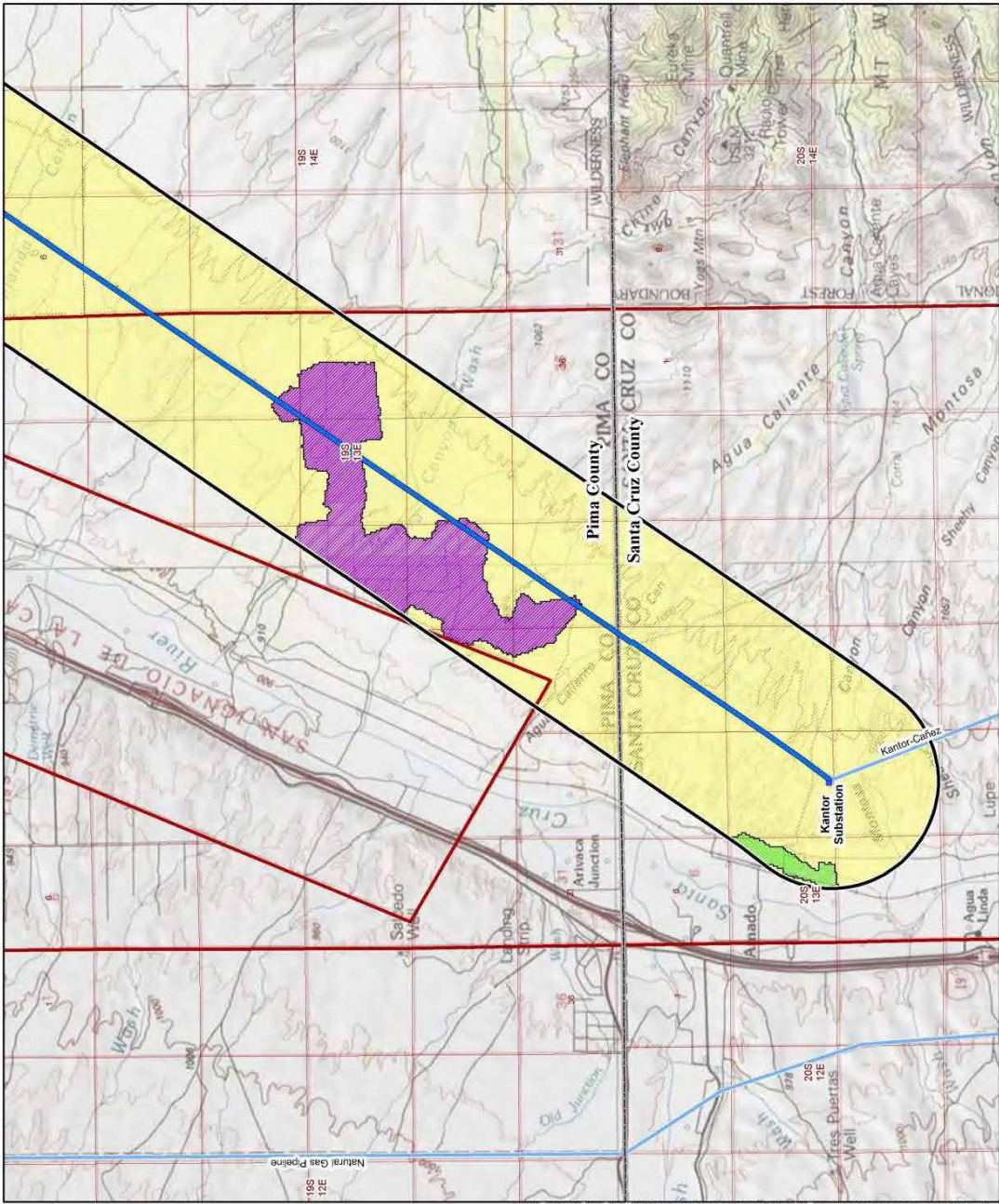
**Existing and Proposed Land Ownership**  
 Nogales Tap to Kantor Upgrade Project  
 Alternative Route 1

**Legend**

- Alternative Route 1
- Study Area
- County Line
- Linear Utility
- Existing Land Use
  - Farmland
  - Residential
  - Undeveloped

0 1 2 Miles

MAP PANEL 3 of 3

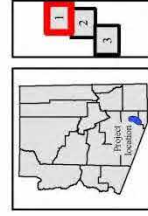


## **Exhibit A-3(f) – Land Use Map for the Nogales Tap to Kantor Upgrade Alternative Route 2**

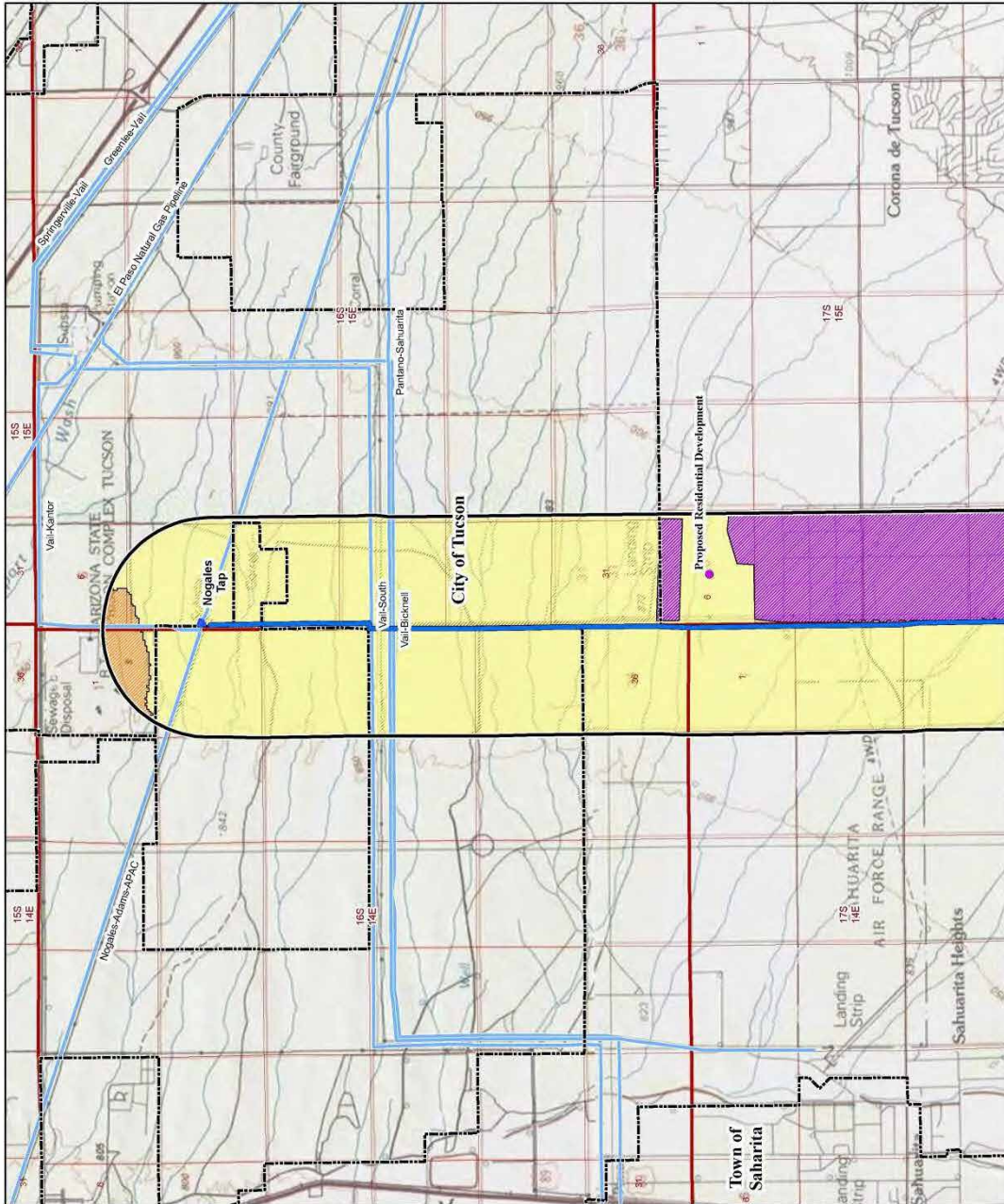
---

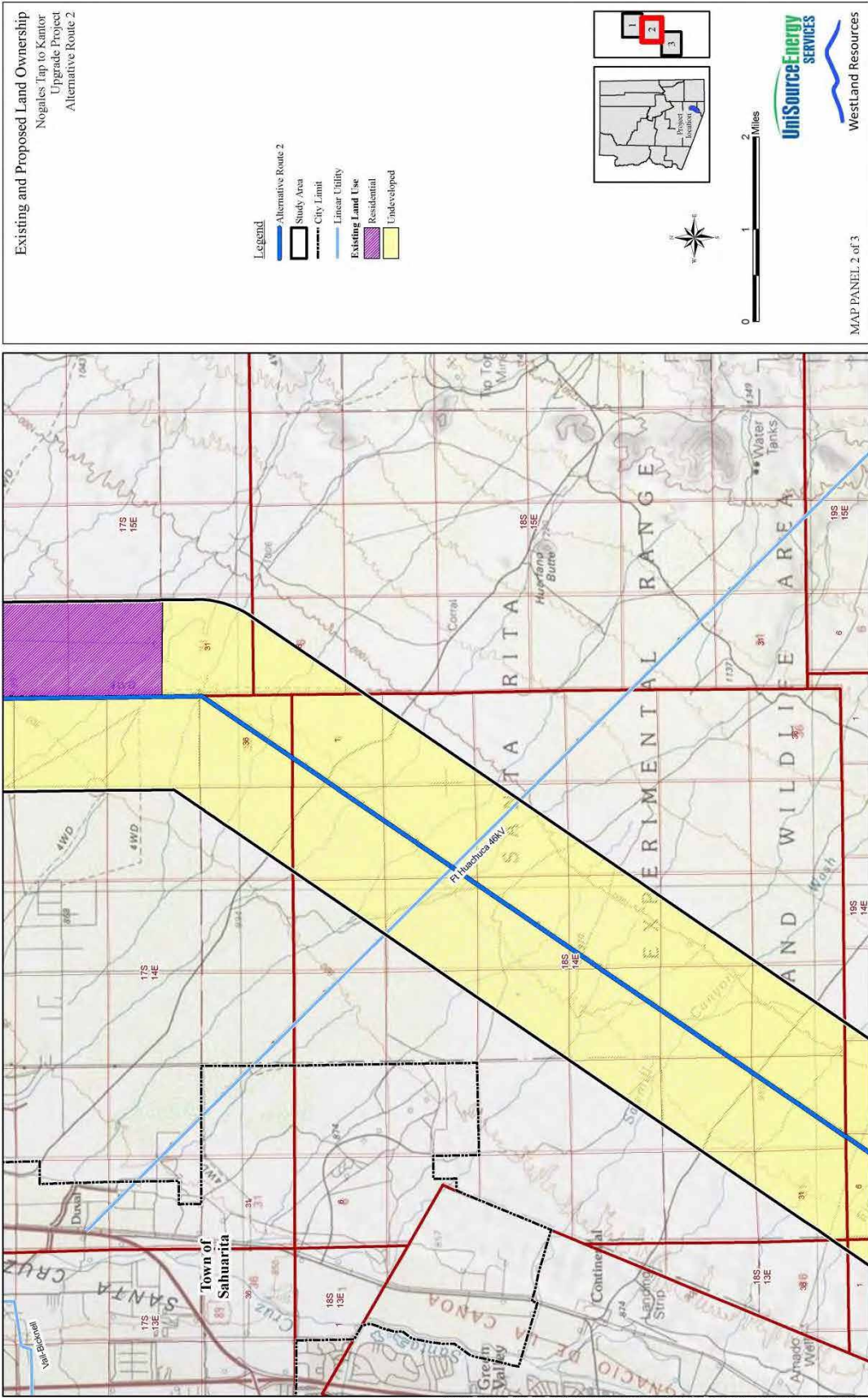
**Existing and Proposed Land Ownership**  
Nogales Tap to Kantor  
Upgrade Project  
Alternative Route 2

- Legend**
- Alternative Route 2
  - Study Area
  - City Limit
  - Linear Utility
  - Existing Land Use**
    - Commercial/Industrial/Government
    - Residential
    - Undeveloped
  - Proposed Land Use



MAP PANEL 1 of 3





**Existing and Proposed Land Ownership**  
 Nogales Tap to Kantor  
 Upgrade Project  
 Alternative Route 2

**Legend**

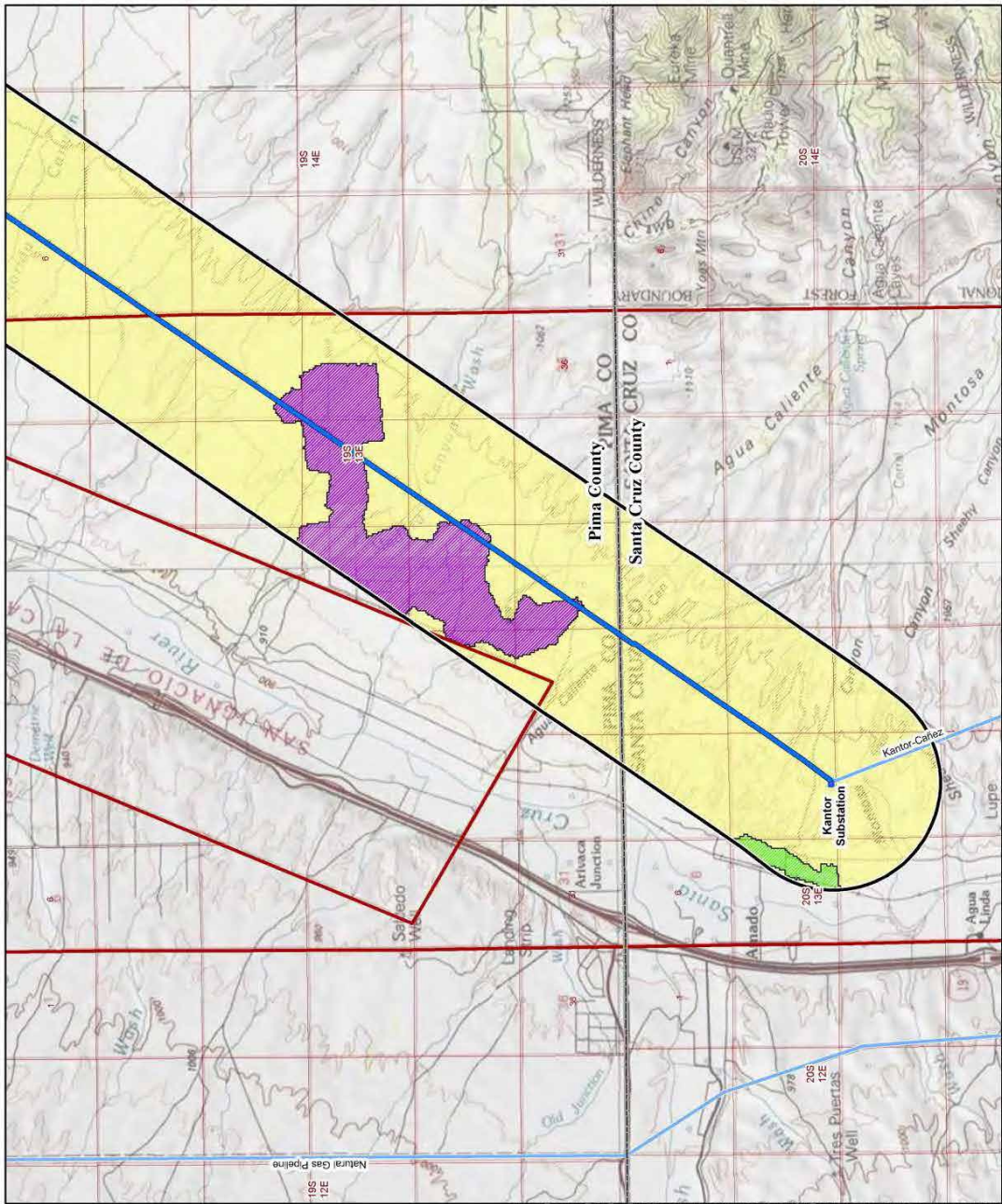
- Alternative Route 2
- Study Area
- County Line
- Linear Utility
- Existing Land Use
  - Farmland
  - Residential
  - Undeveloped

0 1 2 Miles

Westland Resources

UniSourceEnergy SERVICES

MAP PANEL 3 of 3





## **Exhibit A-3(g) – Land Use Map for the Nogales Tap to Kantor Upgrade Alternative Route 3**

---

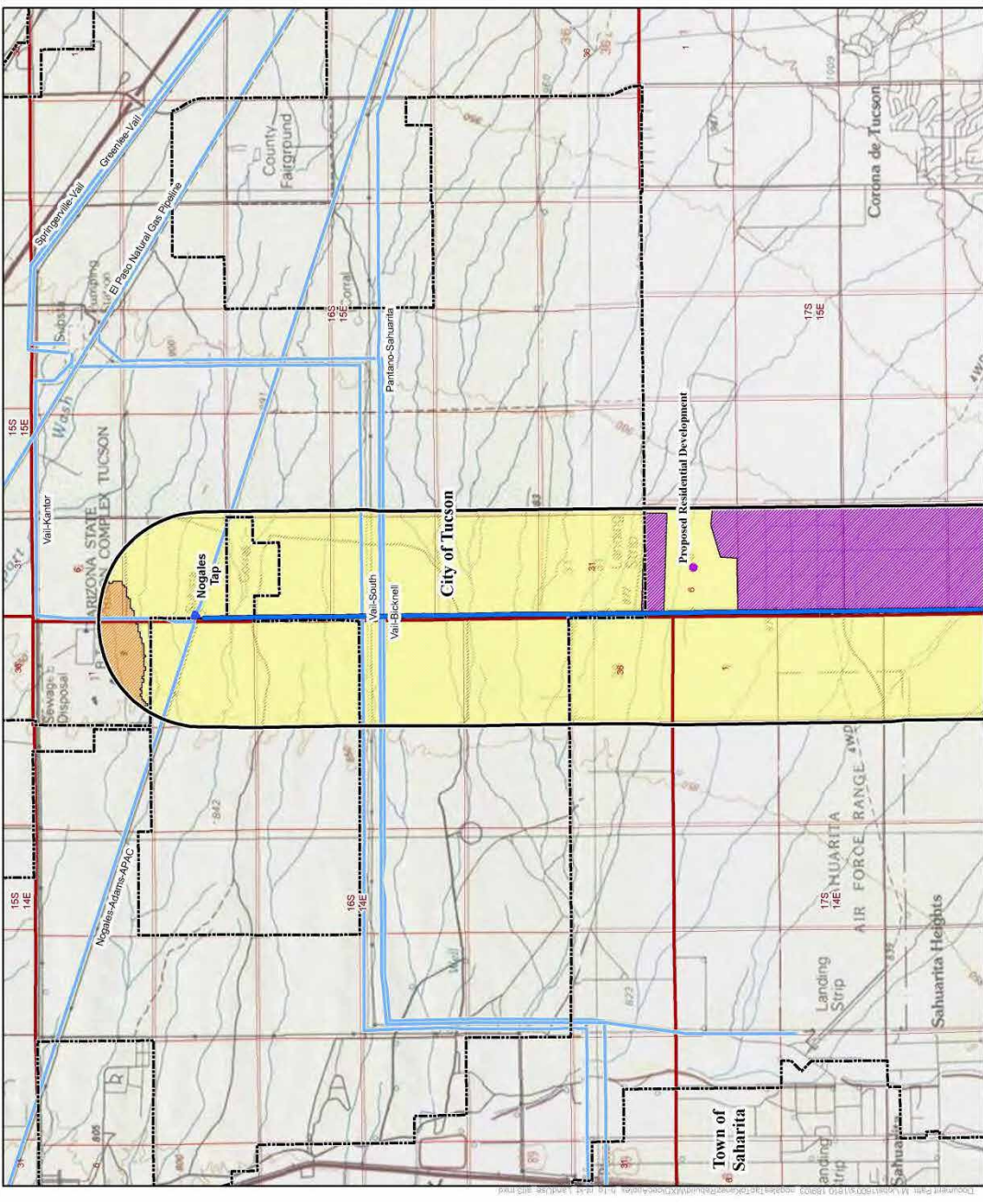
**Existing and Proposed Land Ownership**  
 Nogales Tap to Kantor Upgrade Project  
 Alternative Route 3

**Legend**

- Alternative Route 3 (Existing)
- Study Area
- City Limit
- Linear Utility
- Existing Land Use
- Commercial/Industrial Government
- Residential
- Undeveloped
- Proposed Land Use

MAP PANEL 1 of 3

UniSourceEnergy SERVICES  
 WestLand Resources



**Existing and Proposed Land Ownership**  
 Nogales Tap to Kamior Upgrade Project  
 Alternative Route 3

**Legend**

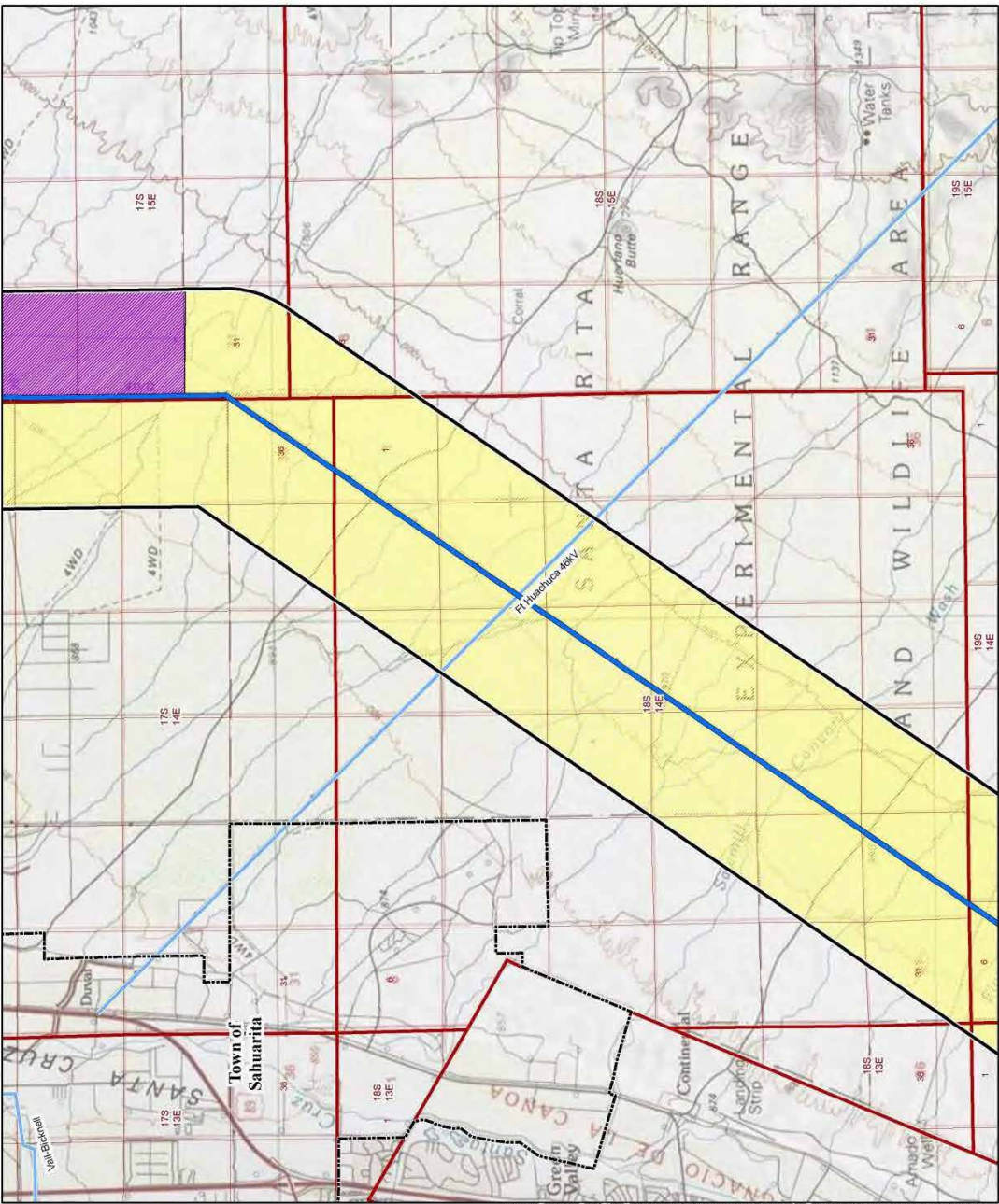
- Alternative Route 3 (Existing)
- Study Area
- City Limit
- Linear Utility
- Existing Land Use
  - Residential
  - Undeveloped
- Undeveloped

0 1 2 Miles

**UniSource ENERGY SERVICES**

WestLand Resources

MAP PANEL 2 of 3



**Existing and Proposed Land Ownership**  
 Nogales Tap to Kantor  
 Upgrade Project  
 Alternative Route 3

**Legend**

- Alternative Route 3 (Existing)
- Study Area
- County Line
- Linear Utility
- Existing Land Use
- Farmland
- Residential
- Undeveloped

0 1 2 Miles

UniSourceEnergy SERVICES

WestLand Resources

**Exhibit A-4 – Maps of Proposed 1,000-foot Certificated Corridor for  
CEC Transmission Facilities**

---

**Exhibit A-4(a) – Proposed 1,000-Foot Certificated Corridor for the  
Nogales Interconnection Project Alternative Route 1**

---

**Land Ownership and Jurisdiction**  
 Nogales Interconnection Project  
 Alternative Route 1  
 Refer to Exhibit H for Land Use

**Legend**

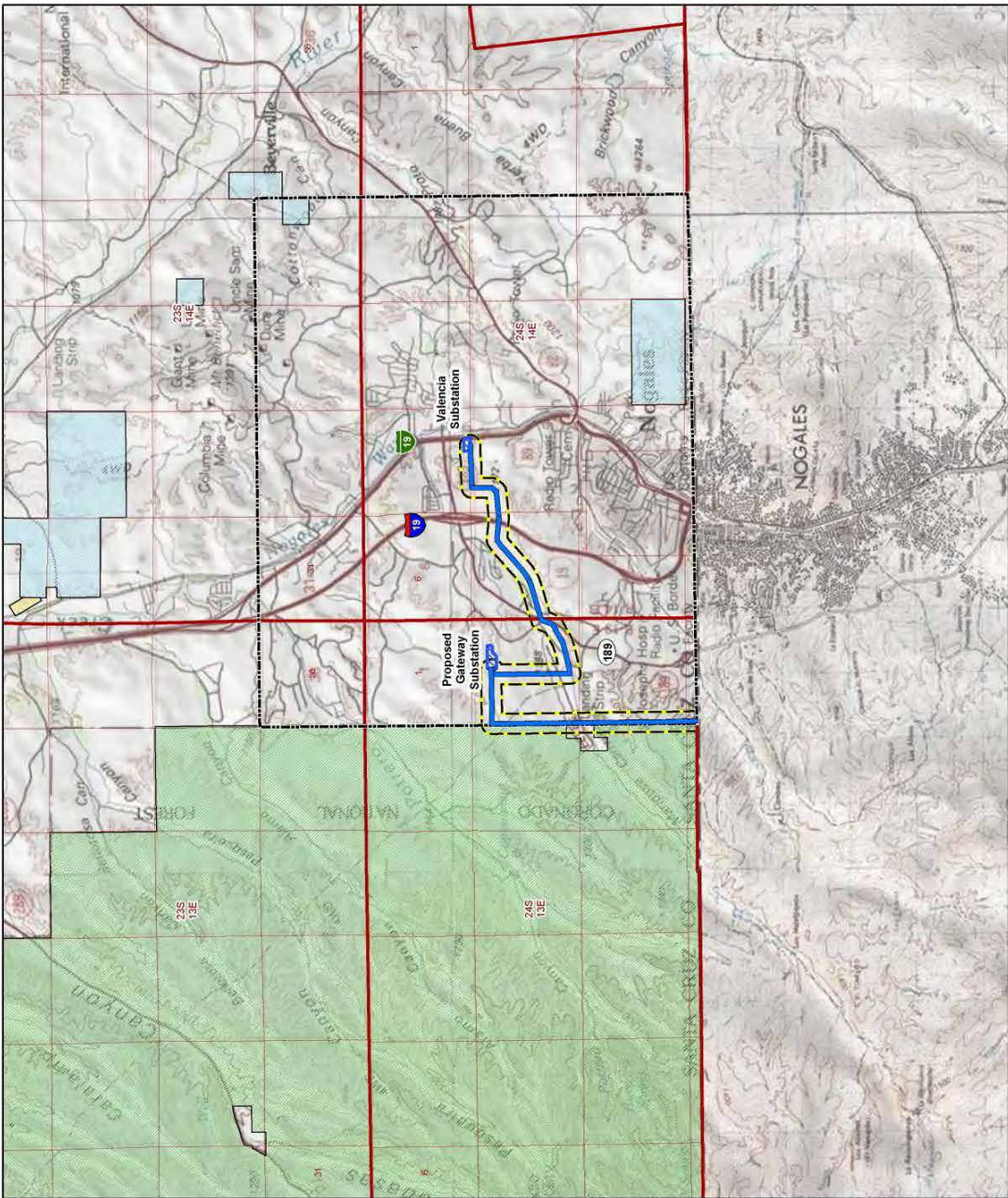
- Alternative Route 1
- Requested 1,000 foot Certified Corridor
- City of Nogales Limit

**Surface Management**

- Bureau of Land Management (BLM)
- Private Land (No Color)
- State Tract Land
- Coronado National Forest

0 1 2 Miles  
 1:63,360 1in = 1mi

UniSource Energy SERVICES  
 WestLand Resources




**Exhibit A-4(b) – Proposed 1,000-Foot Certificated Corridor for the  
Nogales Interconnection Project Alternative Route 2**

---



**Land Ownership and Jurisdiction**  
 Nogales Interconnection Project  
 Alternative Route 2  
 Refer to Exhibit H for Land Use



**Legend**

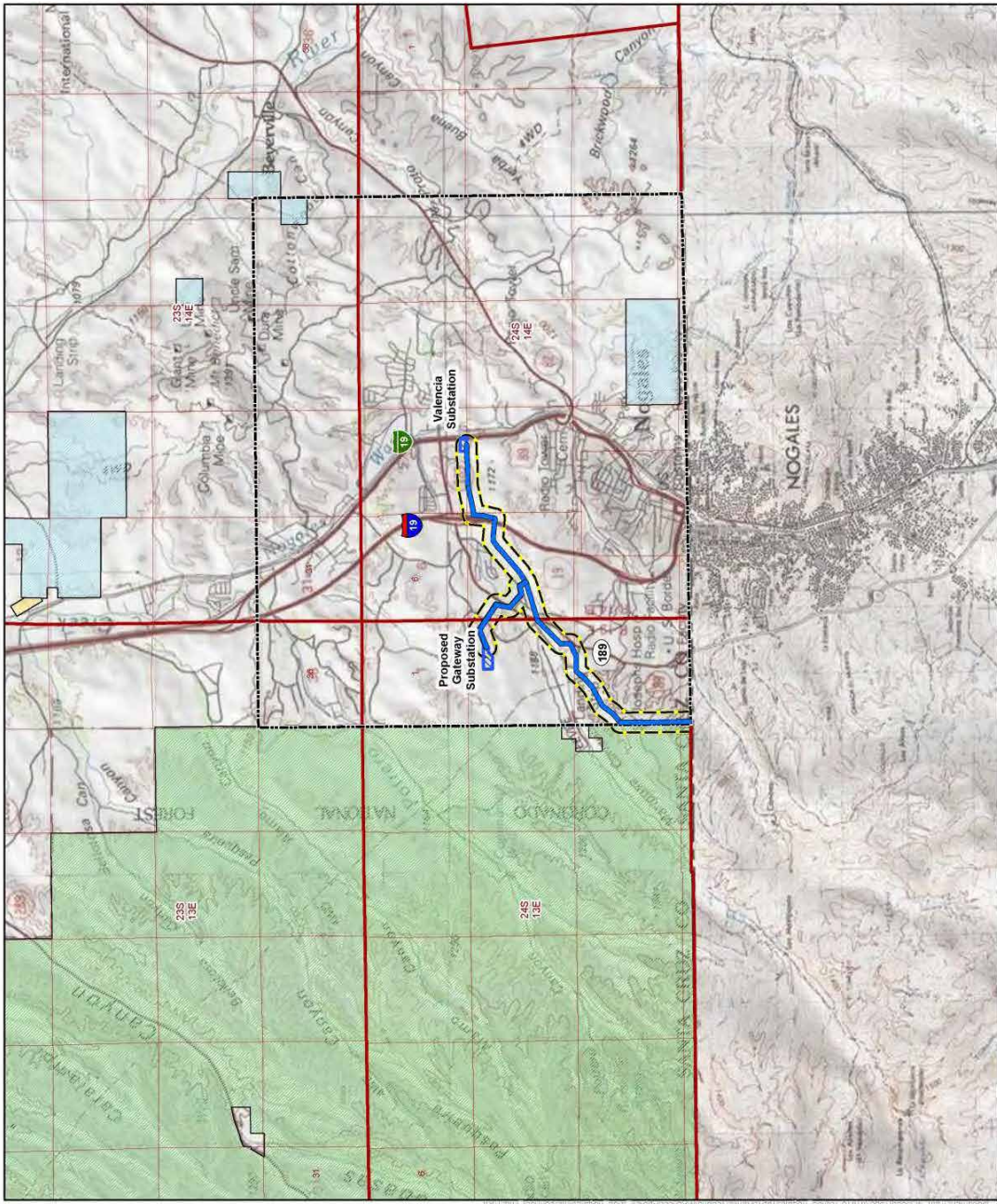
- Alternative Route 2
- Requested 1,000 foot Certified Corridor
- City of Nogales Limit

**Surface Management**

- Bureau of Land Management (BLM)
- Private Land (No Color)
- State Trust Land
- Coronado National Forest

0 1 2 Miles  
 1:63,360 1 in = 1 mi

UniSource Energy SERVICES  
 WestLand Resources



**Exhibit A-4(c) – Proposed 1,000-Foot Certificated Corridor for the  
Nogales Interconnection Project Alternative Route 3**

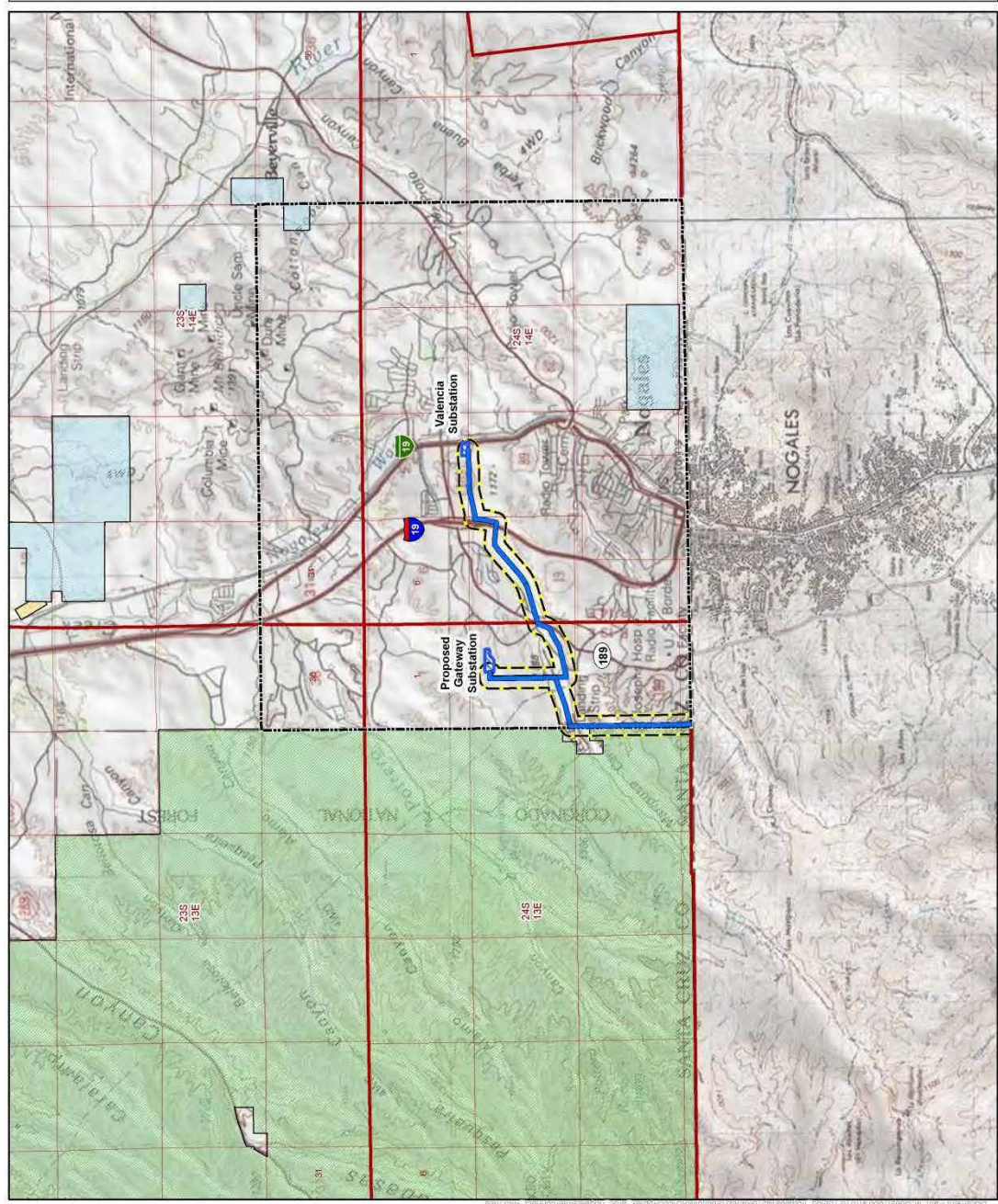
---

**Land Ownership and Jurisdiction**  
 Nogales Interconnection Project  
 Alternative Route 3  
 Refer to Exhibit H for Land Use

- Legend**
- Alternative Route 3
  - Requested 1,000 foot Certified Corridor
  - City of Nogales Limit
- Surface Management**
- Bureau of Land Management (BLM)
  - Private Land (No Color)
  - State Trust Land
  - Coronado National Forest

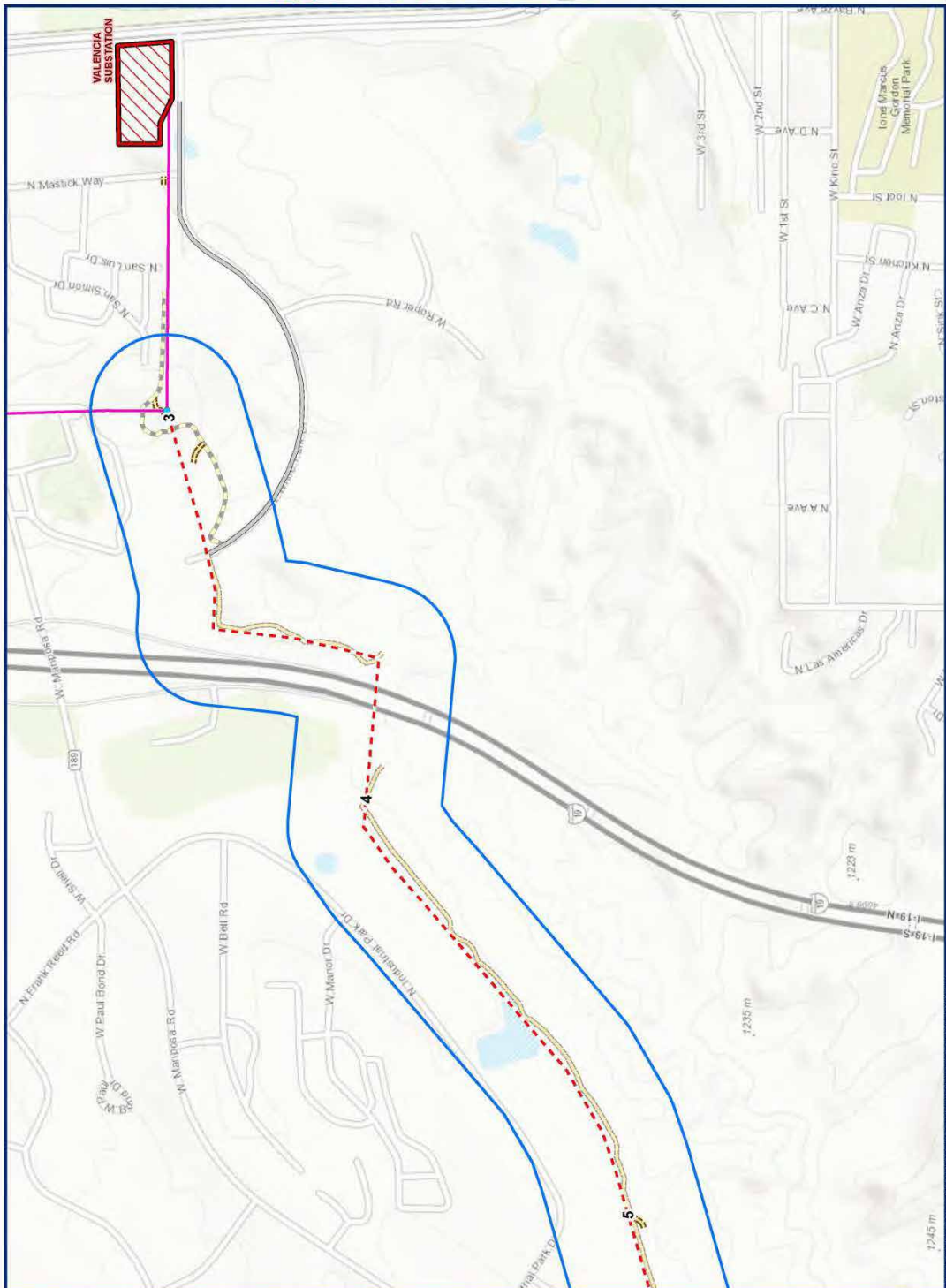


1:63,360 1 in = 1 mi

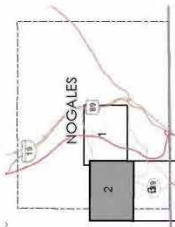


**ALTERNATIVE 3**  
**JULY, 2017**  
**NOGALES INTERCONNECTION**

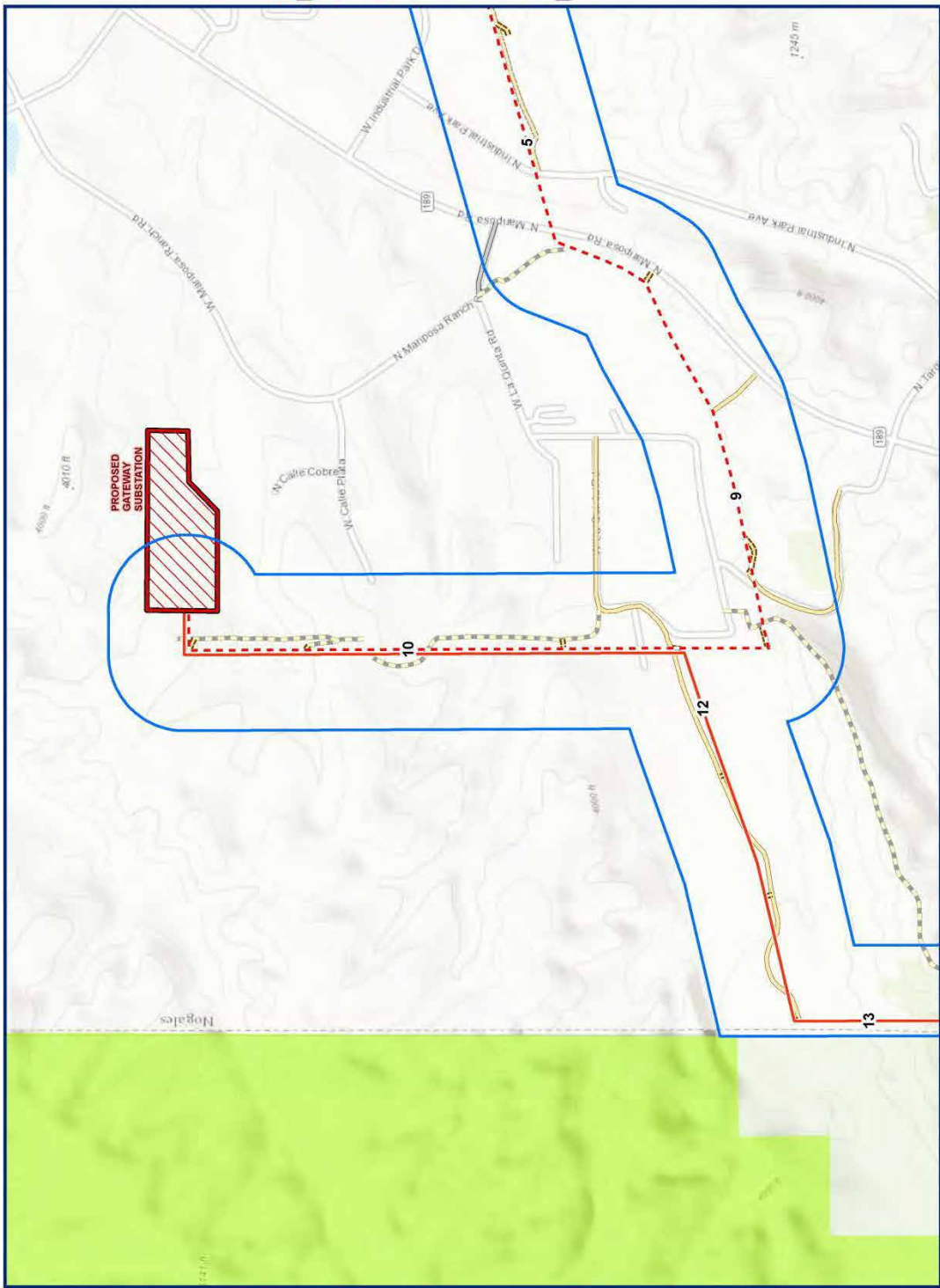
- Border Crossing
- Origination Point
- ▭ CEC Route Corridor
- ▭ Substation Site
- Existing UniSource Energy Services
- Vail to Valencia 138 KV
- Alternative 3**
- 230 KV Route Alternative
- 138 KV Double Circuit Route Alternative
- Access Road Type**
- A - Existing Private Dirt
- B - Existing Public Paved
- C - Existing, To Be Improved
- D - New Dirt
- E - New Spur
- ▭ International Border
- ▭ Coronado National Forest



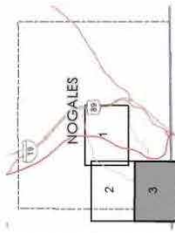
**ALTERNATIVE 3**  
**JULY, 2017**  
**NOGALES INTERCONNECTION**



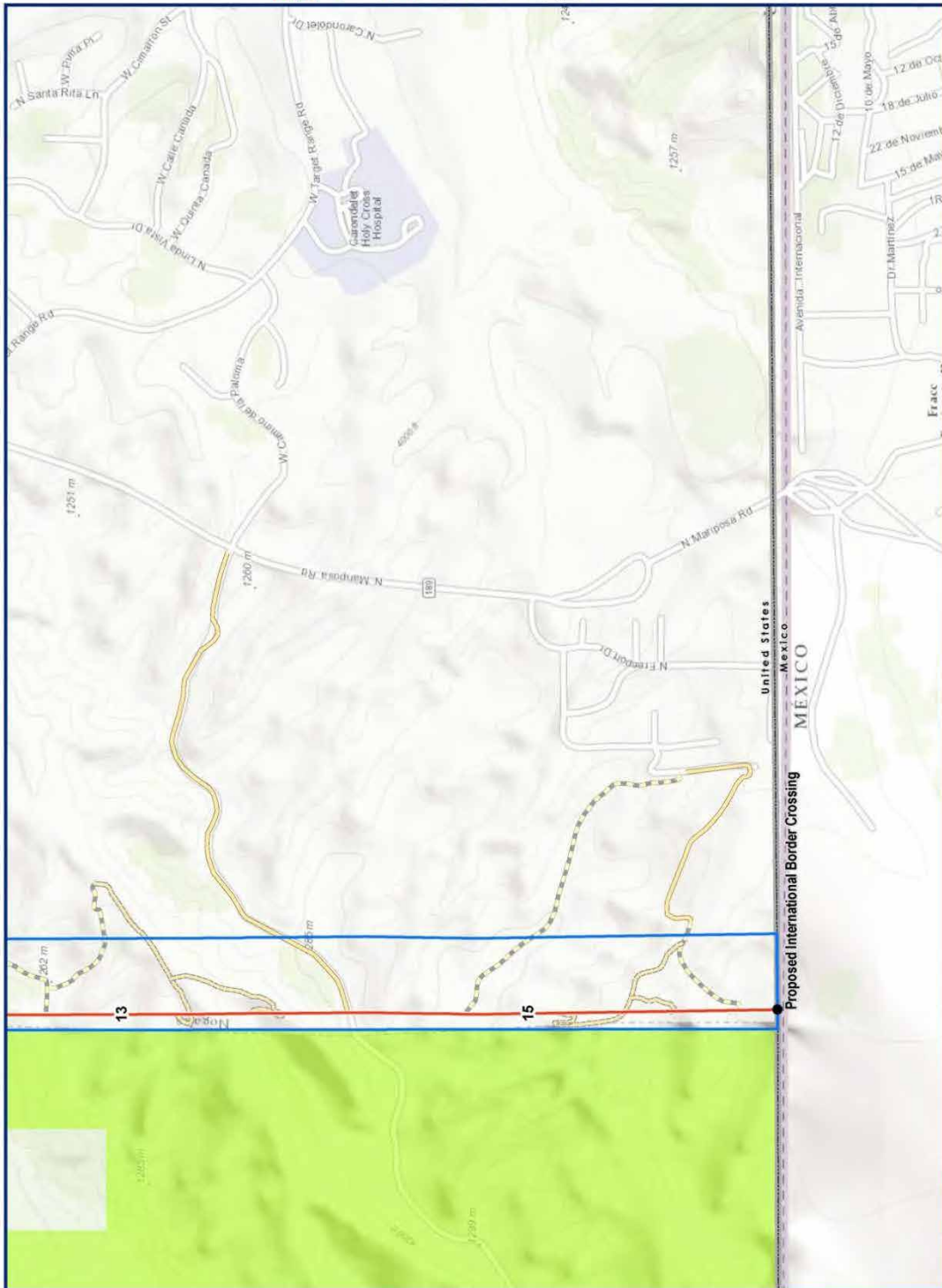
- Border Crossing
  - Origination Point
  - CEC Route Corridor
  - ▭ Substation Site
  - Existing UniSource Energy Services
  - Vail to Valencia 138 kV
- Alternative 3**
- 230 kV Route Alternative
  - 138 kV Double Circuit Route Alternative
- Access Road Type**
- A - Existing Private Dirt
  - B - Existing Public Paved
  - C - Existing, To Be Improved
  - D - New Dirt
  - E - New Spur
- International Border
  - Coronado National Forest



**ALTERNATIVE 3**  
**JULY, 2017**  
**NOGALES INTERCONNECTION**

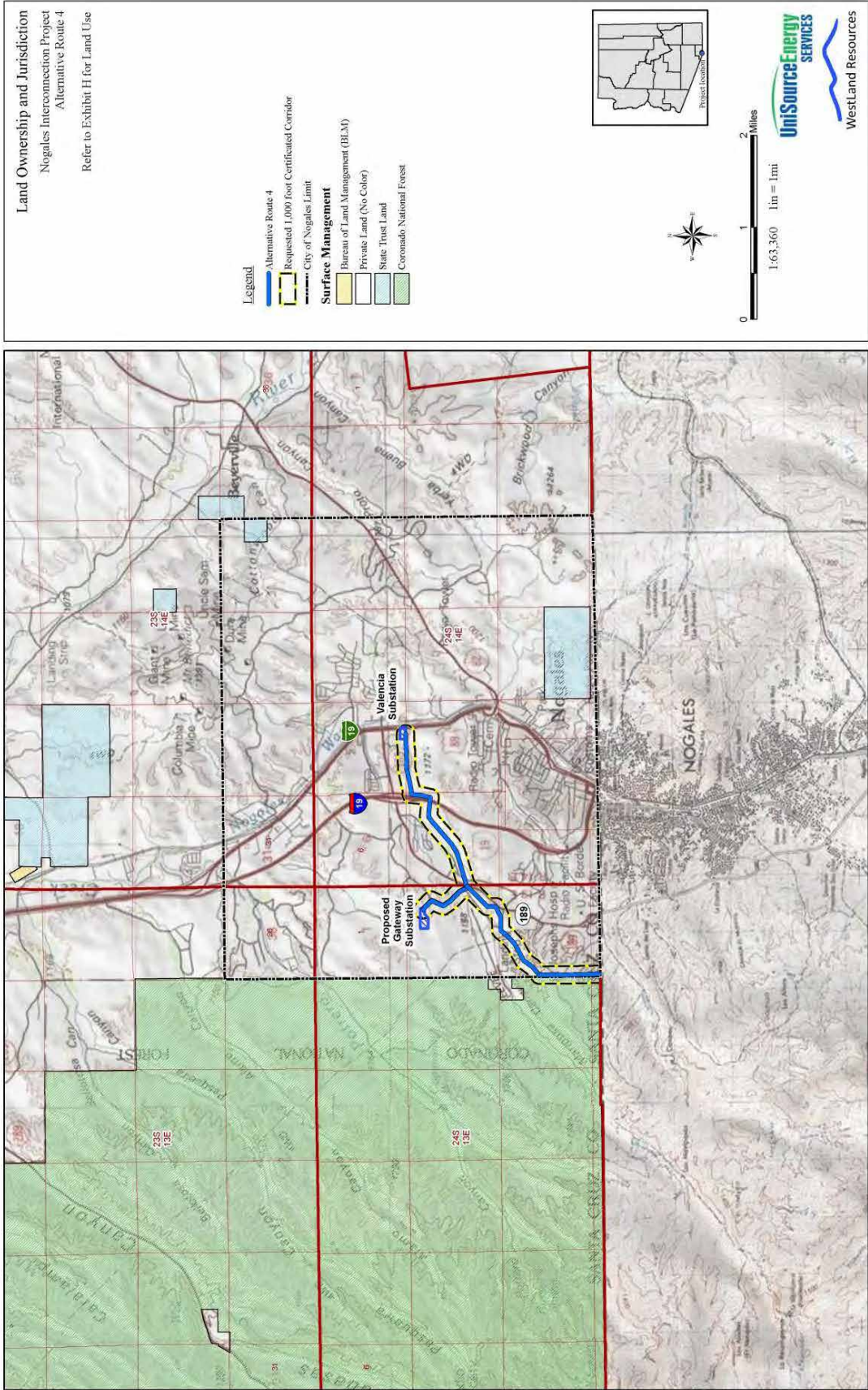


- Border Crossing
  - Origination Point
  - CEC Route Corridor
  - Substation Site
  - Existing UniSource Energy Services
  - Vail to Valencia 138 kV
- Alternative 3**
- 230 kV Route Alternative
  - 138 kV Double Circuit Route Alternative
- Access Road Type**
- A - Existing Private Dirt
  - B - Existing Public Paved
  - C - Existing, To Be Improved
  - D - New Dirt
  - E - New Spur
- International Border
  - Coronado National Forest



**Exhibit A-4(d) – Proposed 1,000-Foot Certificated Corridor for the  
Nogales Interconnection Project Alternative Route 4**

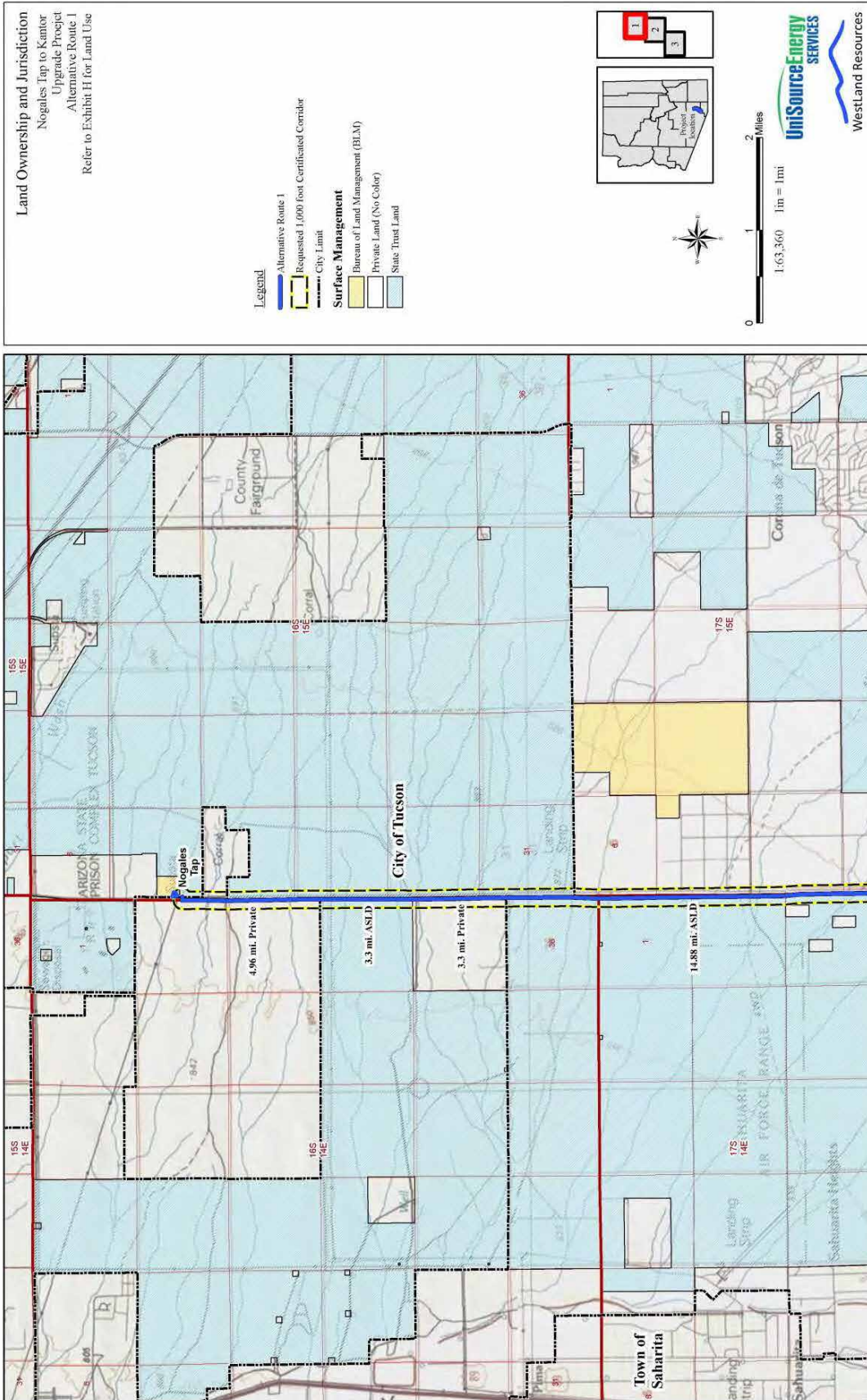
---

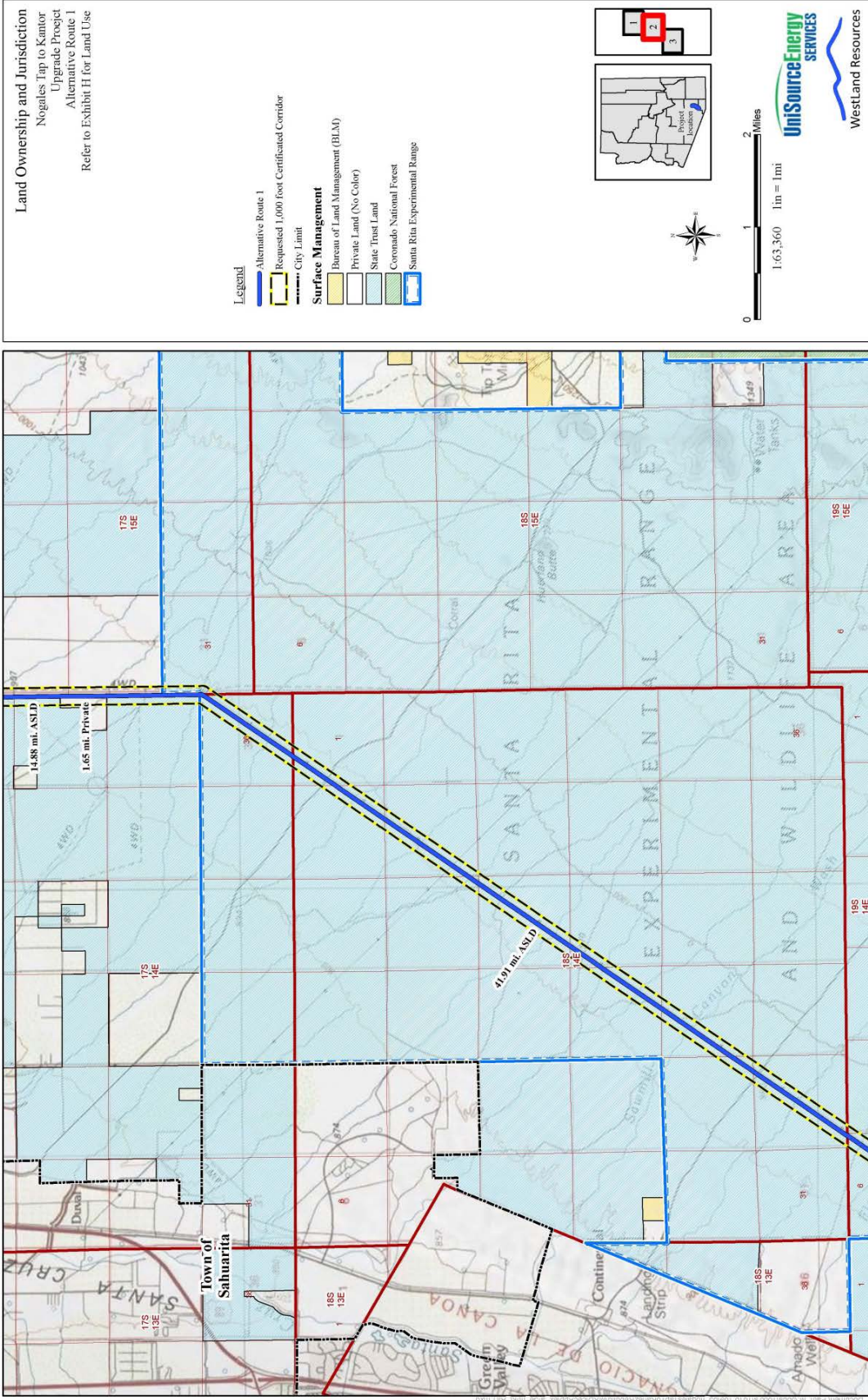


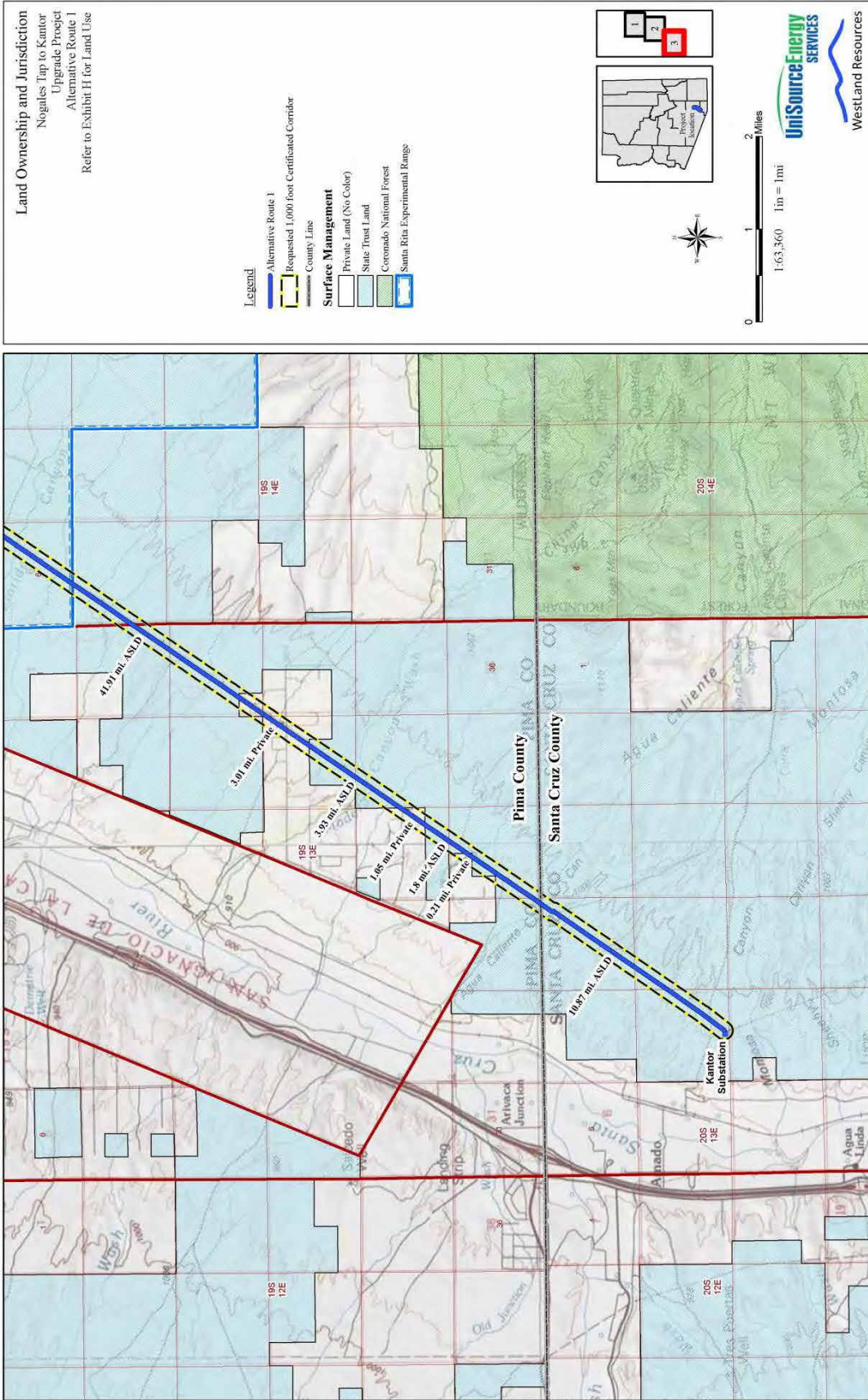


**Exhibit A-4(e) – Proposed 1,000-Foot Certificated Corridor for the  
Nogales Tap to Kantor Upgrade Alternative Route 1**

---

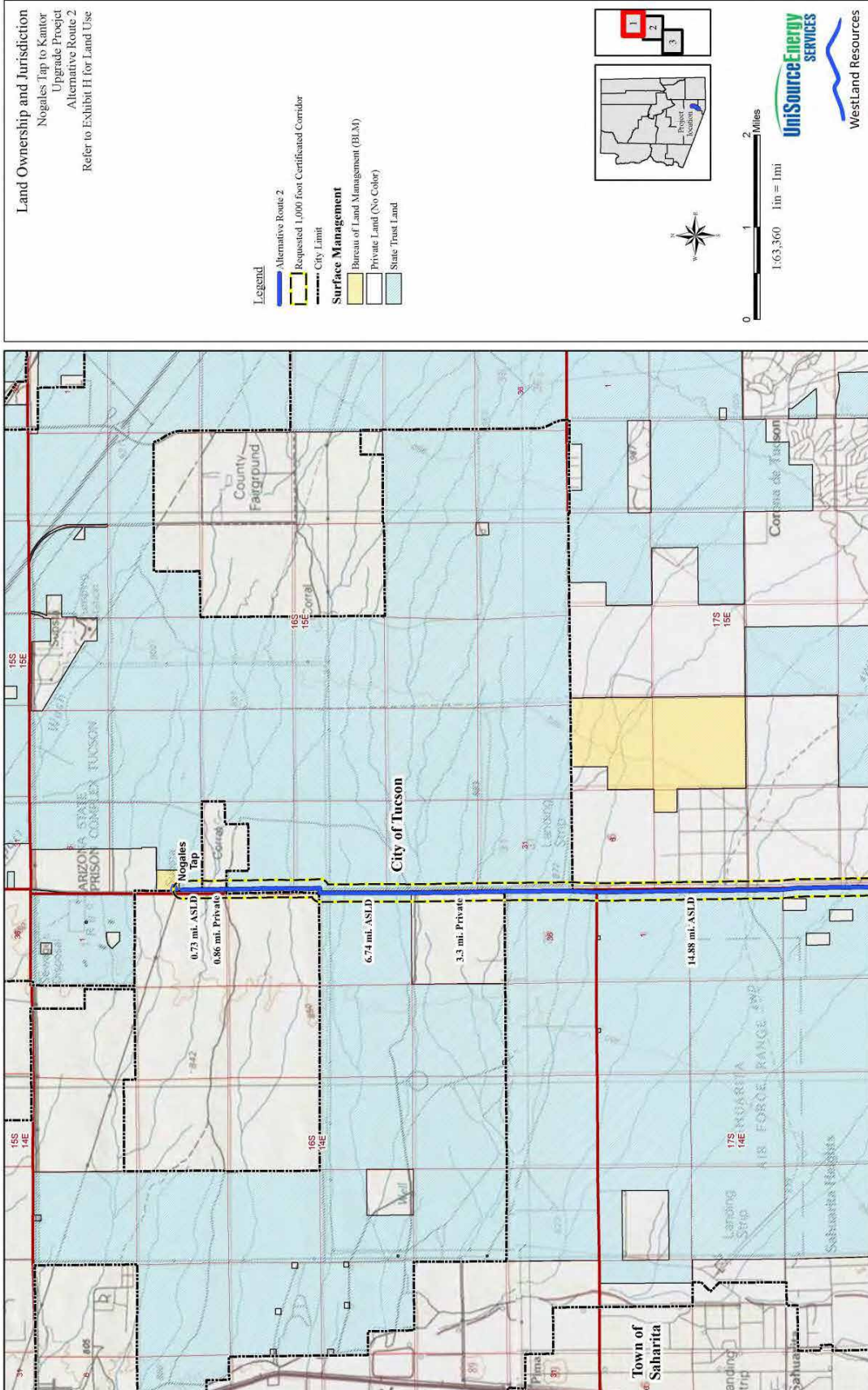


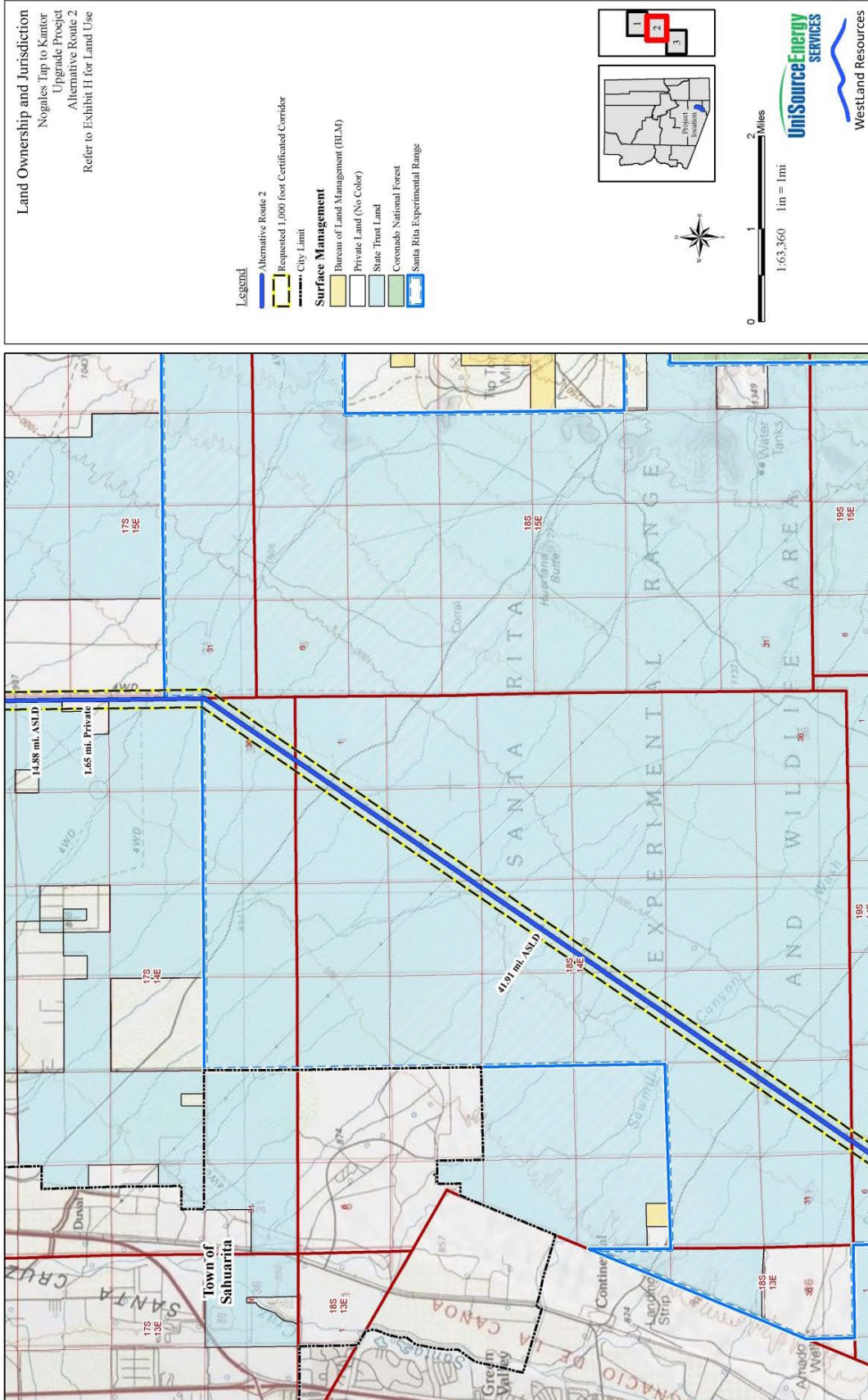


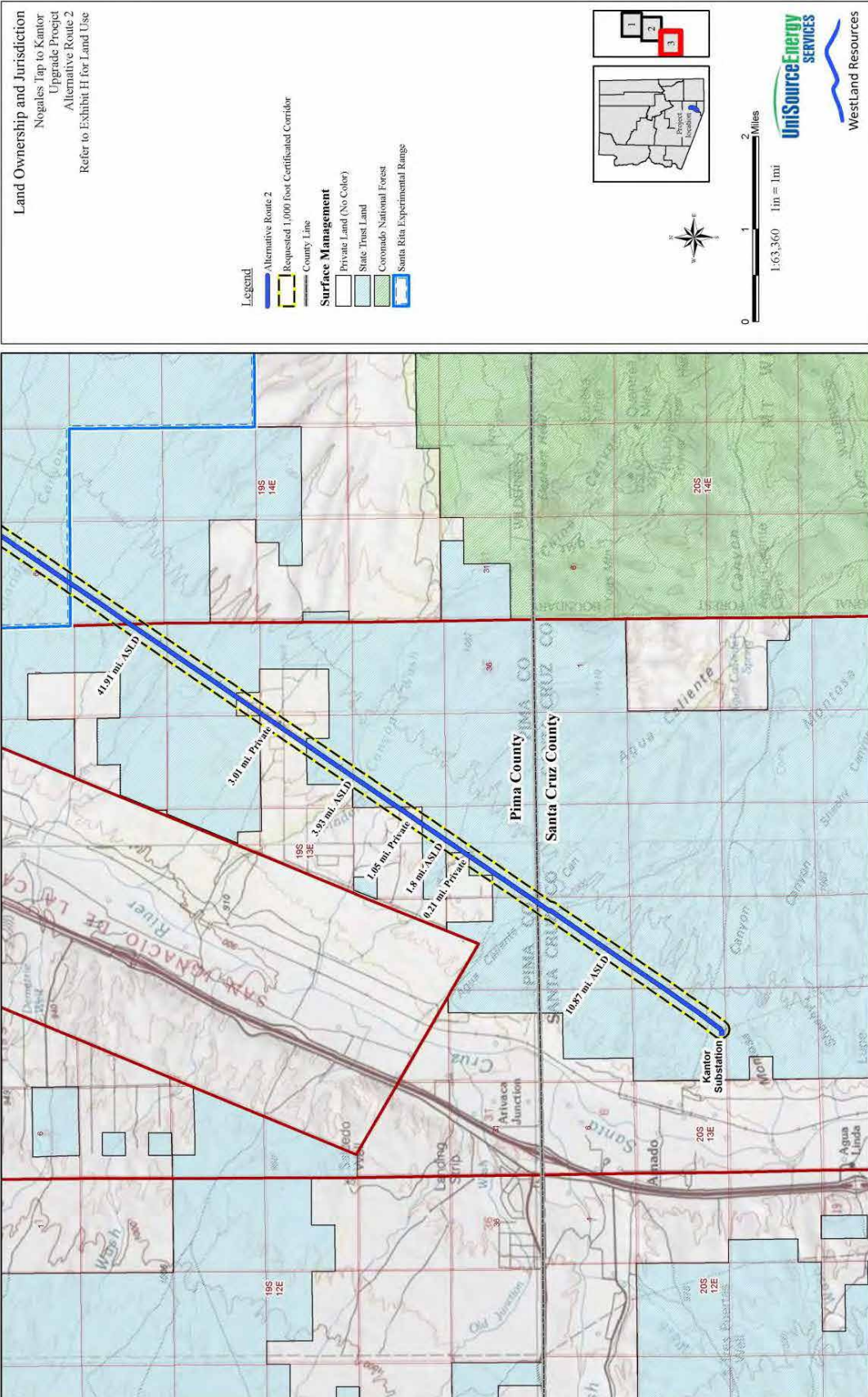


**Exhibit A-4(f) – Proposed 1,000-Foot Certificated Corridor for the Nogales Tap to Kantor Upgrade Alternative Route 2**

---









**Exhibit A-4(g) – Proposed 1,000-Foot Certificated Corridor for the  
Nogales Tap to Kantor Upgrade Alternative Route 3**

---

**Land Ownership and Jurisdiction**  
 Nogales Tap to Kanitor Upgrade Project  
 Alternative Route 3  
 Refer to Exhibit H for Land Use

**Legend**

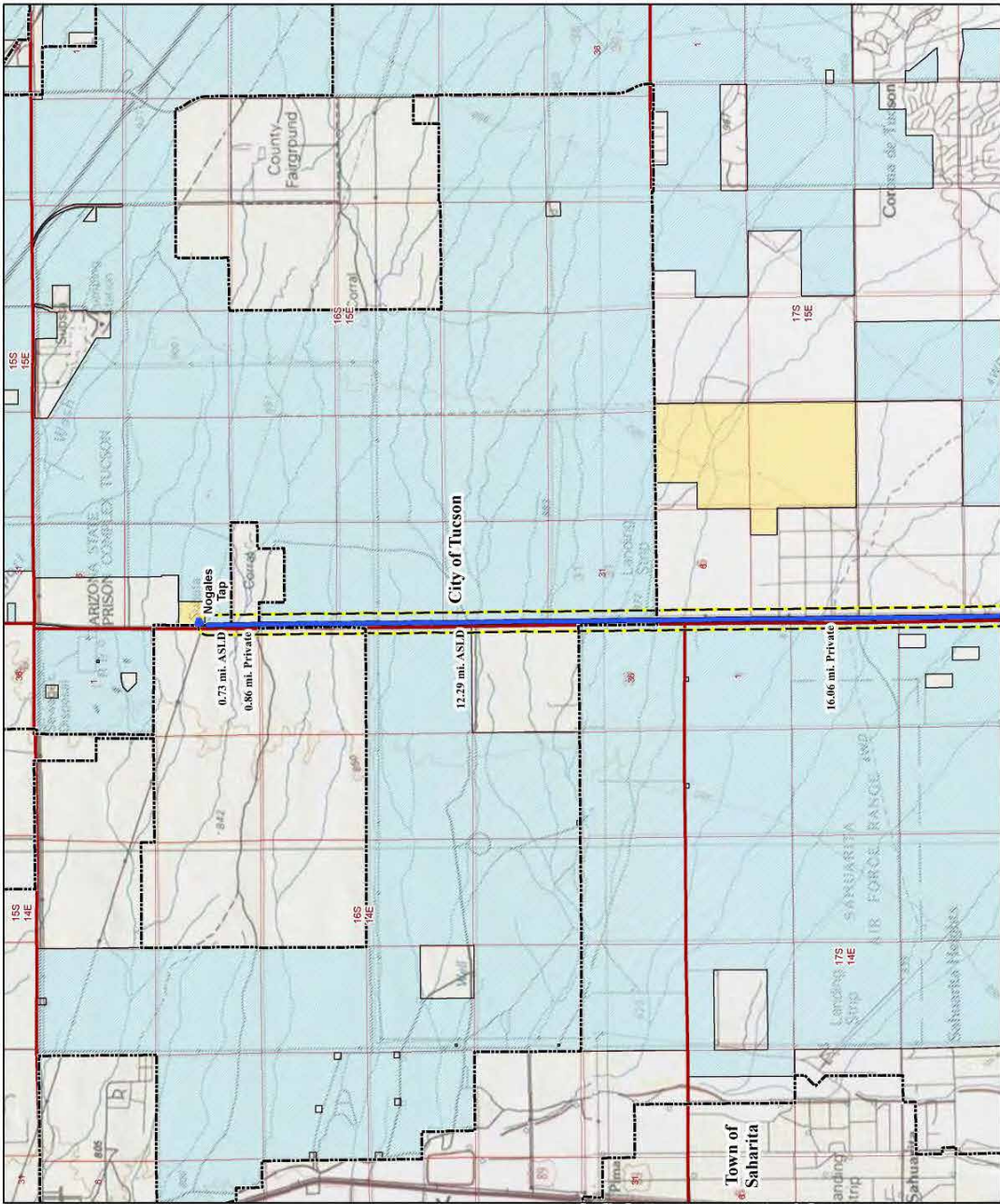
- Alternative Route 3 (Existing)
- Requested 1,000 Foot Certified Corridor
- City Limit

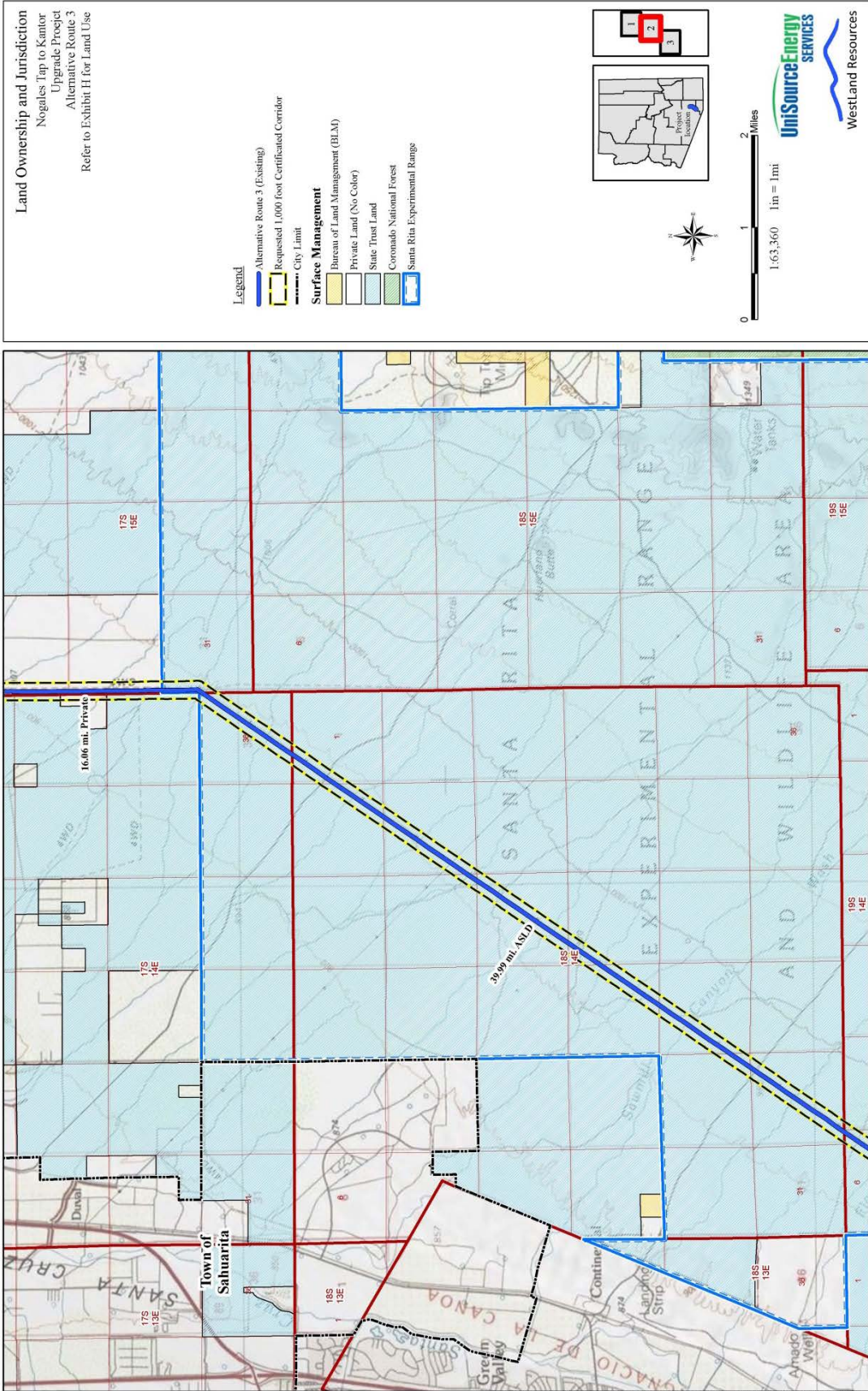
**Surface Management**

- Bureau of Land Management (BLM)
- Private Land (No Color)
- State Trust Land

0 1 2 Miles  
 1:63,360 1in = 1mi

UniSource Energy SERVICES  
 Westland Resources





**Land Ownership and Jurisdiction**  
 Nogales Tap to Kantor Upgrade Project  
 Alternative Route 3  
 Refer to Exhibit H for Land Use

**Legend**

- Alternative Route 3 (Existing)
- Requested 1,000 foot Certificated Corridor
- County Line

**Surface Management**

- Private Land (No Color)
- State Trust Land
- Coronado National Forest
- Santa Rita Experimental Range

0 1 2 Miles  
 1:63,360 1 in = 1 mi

UniSourceEnergy SERVICES  
 WestLand Resources

