

## **GOLDEN VALLEY 230KV TRANSMISSION LINE PROJECT**

### *Project Fact Sheet*

#### **PROJECT INFORMATION**

UNS Electric (UNSE), a subsidiary of UniSource Energy Services, delivers electric service to more than 80,000 customers in Mohave County, Arizona. In order to improve reliability, replace aged equipment, and accommodate future customer electricity demands, UNSE plans to construct a new 230 kilovolt (kV) electrical transmission line and substation near Golden Valley and Kingman, Arizona. The project will be located on lands managed by the Bureau of Land Management (BLM), the State of Arizona, the City of Kingman, and on private land (see enclosed map). The new line would originate at the Harris Substation southwest of Kingman, extend north approximately 20 miles, and end near the intersection of Mineral Park Road and US 93 at the new Mineral Park 230kV Substation.

This project was initiated in 2007 and stopped in 2008 when the primary need for the power, the Mineral Park Mine, no longer wanted to pursue the project. Public outreach was performed during that time and previous comments received will be reviewed and analyzed as part of this project.

#### **NEED FOR THE PROJECT**

UNSE has a need to develop a double-circuit 230kV transmission line from the Harris Substation to the new Mineral Park Substation to improve reliability, replace aged equipment, and accommodate a projected 5 to 35 megawatt increase in load over the next decade in the north Golden Valley area. Power within the UNSE Mohave service territory is transmitted primarily over a 69kV transmission network. The current 69kV transmission network has limited ability to serve the expected load growth in the northern portions of the service territory; it is also subject to outages of lines, transformers, or buses, which may lead to the interruption of power to customers. The proposed project would enhance the electrical infrastructure near Golden Valley and support long-term infrastructure plans for the UNSE network.

#### **SITING STUDY**

A siting study was previously conducted to locate the facilities where they would be most compatible with existing and proposed environmental conditions. Based on the study and public and agencies input, two alternatives were selected for analysis. The alternatives are illustrated on the enclosed map.

#### **ENVIRONMENTAL ANALYSIS**

UNSE is required to conduct environmental studies and obtain necessary permits for the proposed project. Because the project would cross federal public land managed by the BLM, it must be in compliance with the National Environmental Policy Act (NEPA) and other relevant regulations. To comply with NEPA, an Environmental Assessment (EA) is being prepared under the direction of the BLM Kingman Field Office. The EA will consider potential effects from the proposed project to the environment, including physical, biological, social, and economic resources. In addition, because the project involves a transmission line greater than 115kV, it requires approval by the Arizona Corporation Commission (ACC). The Arizona Power Plant and Transmission Line Siting Committee of the ACC will first review this project for environmental compatibility through their Certificate of Environmental Compatibility (CEC) process.

Transcon Environmental, an Arizona-based environmental consulting firm, is assisting UNSE with siting and environmental compliance activities.

#### **PROJECT TIMELINES**

Contact with the public and interested agencies will begin this month (June 2016), and environmental studies will take place through the summer of 2016. The CEC process is expected to be underway in early 2017, and the first phase of project construction is anticipated to begin in 2018.

## **GOLDEN VALLEY 230KV TRANSMISSION LINE PROJECT**

### *Project Fact Sheet*

#### **GETTING INVOLVED OR MAKING COMMENTS**

Two public open houses are scheduled to present the proposed project, answer questions, and accept public comments. The first will be held June 28, 2016 between 5:30 p.m. and 7:30 p.m. at the Hampton Inn & Suites, 1791 Sycamore Avenue, Kingman, Arizona 86409. The second will be held June 29, 2016 between 5:30 p.m. and 7:30 p.m. at the Golden Valley Public Safety Training Center, 423 Colorado Road, Golden Valley, Arizona 86413.

Your comments are welcome and important to establish the level and scope of analysis. Before including your address, phone number, e-mail address, or other personal identifying information in your comment, be advised that your entire comment—including your personal identifying information—may be made publicly available at any time. While you can ask us in your comment to withhold from public review your personal identifying information, we cannot guarantee that we will be able to do so.

You may submit comments by:

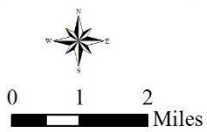
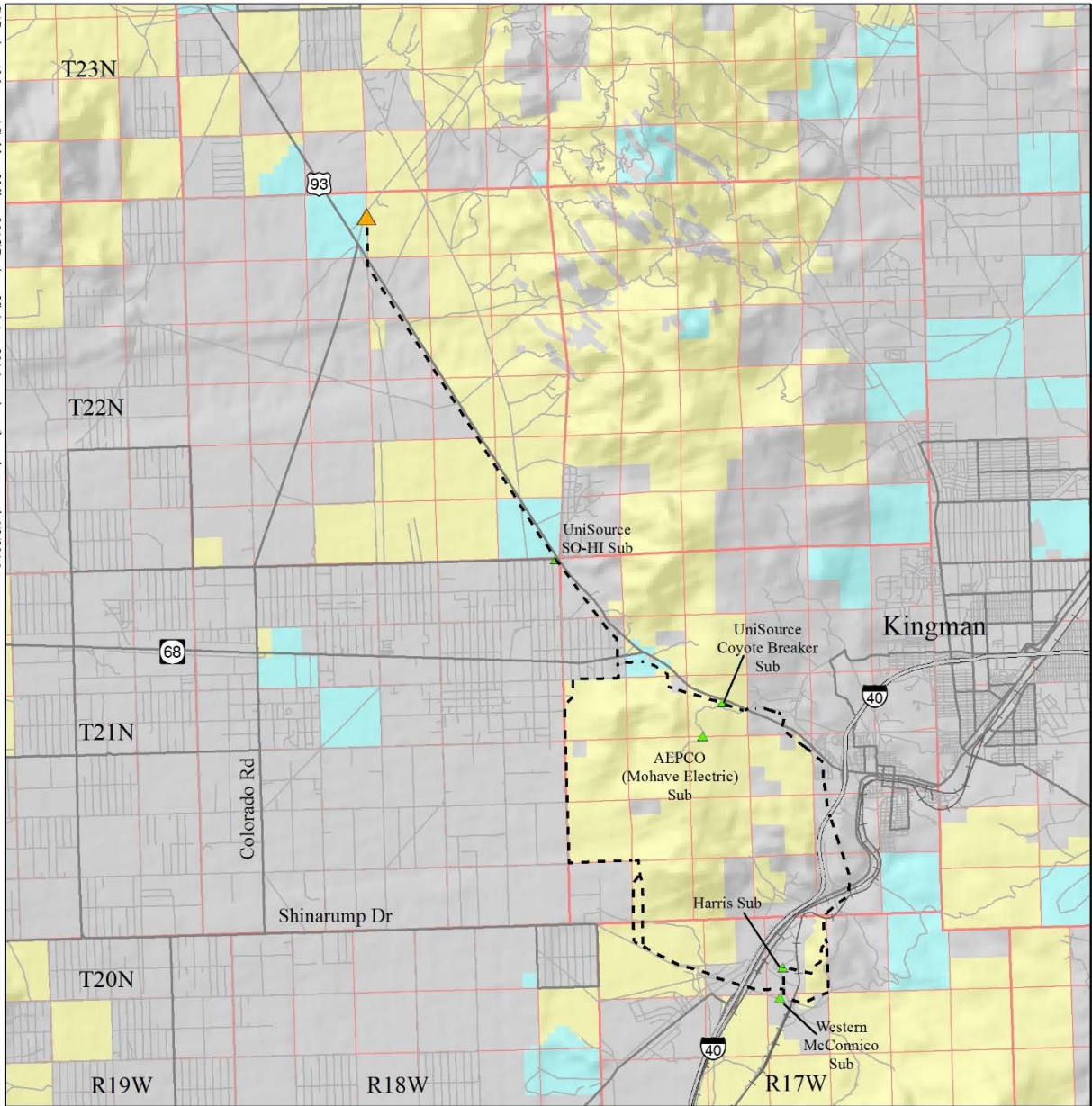
- Mailing written comments to:  
Andy Whitefield, BLM Project Manager  
c/o Transcon Environmental, Inc.  
1745 South Alma School Road, Suite 220  
Mesa, Arizona 85210
- Providing written or verbal comments during the public open house
- E-mailing written comments to [awhitefi@blm.gov](mailto:awhitefi@blm.gov)
- Calling and leaving a message on the Project Information Phone Line at (844) 882-8899

For project information and updates, please visit the project website at:

<https://www.uesaz.com/projects/transmission/golden/>.

If you have questions regarding this project, please contact Mr. Andy Whitefield, BLM Project Manager, at (928) 718-3746 or by email at [awhitefi@blm.gov](mailto:awhitefi@blm.gov).

G:\Projects\Meridian\Golden\_Valley\_2015\Project\_Vicinity\_2016\_project\_fat\_sheet.mxd 6/2/2016



### Legend

- Project Alternatives
- ▲ Proposed Substation
- ▲ Existing Substation
- Bureau of Land Management
- Private
- State

### Project Vicinity Map

Golden Valley 230kV  
Transmission Line Project

UNS Electric

