

PROJECT INFORMATION

This is the third Fact Sheet provided on the Golden Valley 230kV Transmission Line Project. The first and second Fact Sheets were circulated in October 2007 and February 2008 to area landowners, agencies, organizations, business owners, and residents. This Fact Sheet provides an update on the evaluation process of alternatives and announces a series of public open houses. A map depicting the study area is contained on the opposite side of this Fact Sheet.

PROJECT BACKGROUND

In order to meet increased electrical demands and growth, UNS Electric, Inc. (UNSE) plans to construct a new electrical transmission line in the Golden Valley area near Kingman. The project involves the construction of a 230 kilovolt (kV) transmission line and two substations to serve the existing and planned electrical loads within Golden Valley and the Mineral Park Mine. The primary and initial electrical need is at the Mineral Park Mine, which is located approximately 20 miles northwest of Kingman along the east side of US Route 93 (US 93) on the western slope of the Cerbat Mountains. Additionally, the new transmission line will enhance the electrical infrastructure to the developing Golden Valley area.

SITING STUDY AND ENVIRONMENTAL ANALYSIS

The siting study determines where the transmission line can and should be placed. Route selection includes consideration of potential issues with transmission line operations, as well as potential effects of the route on the environment, current and anticipated land uses, and how the line will appear on the landscape. A study area has been defined and is illustrated on the map. Alternatives have previously been identified and evaluated by the project team. Comments from the public have been received on these alternatives. The public is invited to offer additional alternatives for consideration.

Once alternatives have been evaluated, UNSE will seek project approval and alternative selection from both the Bureau of Land Management (BLM) and Arizona Corporation Commission (ACC). First, an Environmental Assessment (EA) will be prepared, the BLM will review the EA, and make a decision about whether or not to authorize the right-of-way across BLM lands. Second, an application for a Certificate of Environmental Compatibility will be submitted to the ACC, a public hearing will be held before the Arizona Power Plant and Transmission Line Siting Committee, and finally the ACC will make their determination.

PROJECT TIMELINES

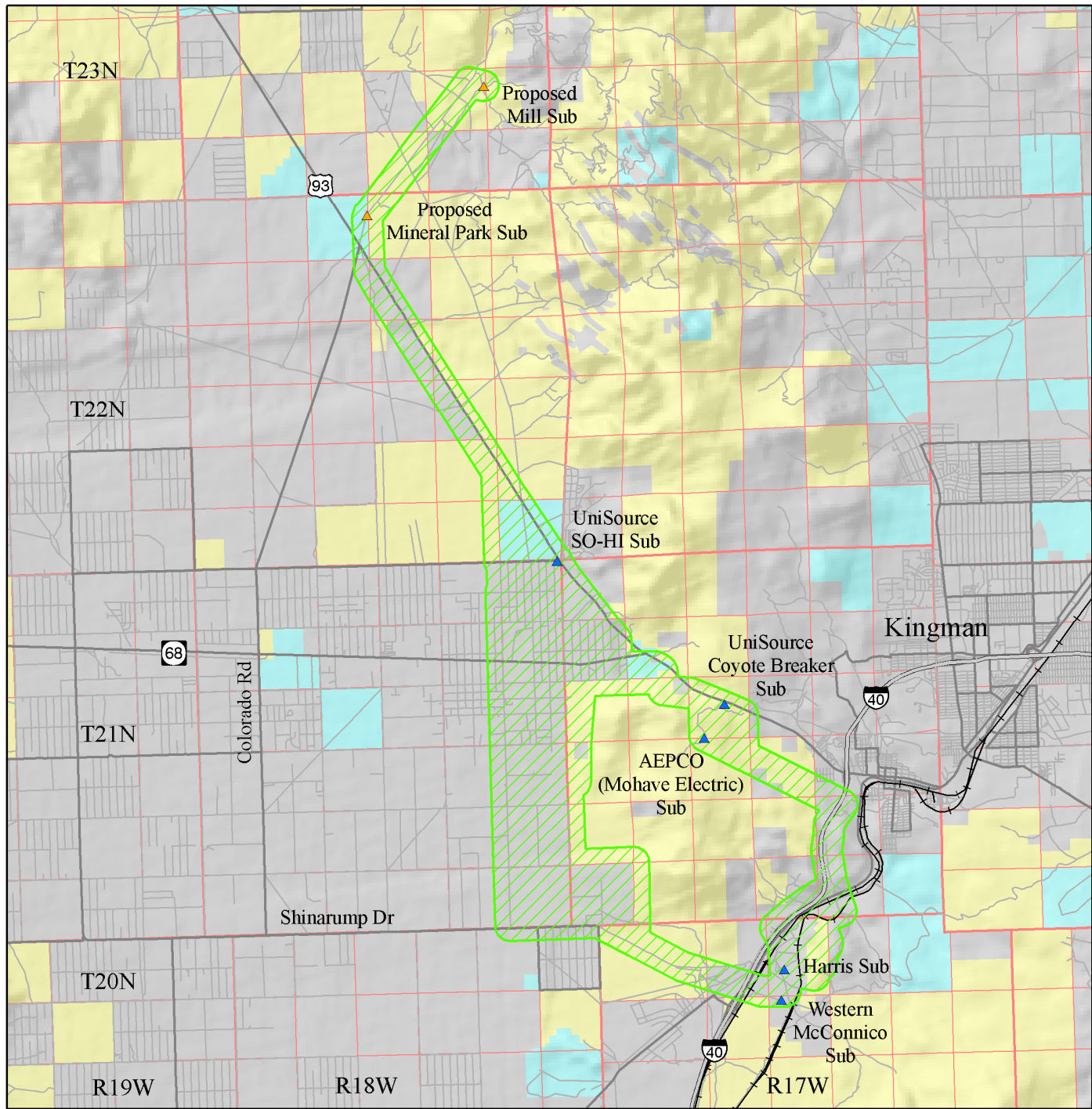
Contact with the public and agencies will continue. These contacts will assist in defining the final route submitted to the ACC. The application to the ACC is expected to be submitted in 2008. If approved, construction could begin in the latter part of 2008 or early 2009.

GETTING INVOLVED OR MAKING COMMENTS





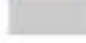

A series of public open houses have been scheduled on May 6, 7, and 8, 2008. Each of the open houses will be held at Black Mountain Elementary and Golden Valley Middle School, 3404 N. Santa Maria Road, Golden Valley, Arizona 86413, between 6:30 p.m. and 8:30 p.m. The open houses are designed to provide an informal forum in which the public may ask questions, receive answers, and provide comment. Specifically, UNSE would like to provide an opportunity at the open houses to:

- Discuss the process
- Suggest or offer alternatives
- Comment on alternatives
- Visit directly with siting and design team
- Discuss health and safety concerns
- Discuss right-of-way needs

Your comments regarding this project are welcome. Comments will assist UNSE and the involved agencies in making sound choices for the project. You may address written comments to Transcon Environmental, 3740 E. Southern Ave., Suite 218, Mesa, Arizona 85206, or you may make written or verbal comments during any of the public open houses. If you have questions regarding the proposed project, please call the Project Information Phone Line at (928) 415-0213 or toll-free at (866) 453-2401.



Legend

-  Siting Area
-  Existing Substation
-  Proposed Substation
-  Bureau of Land Management
-  Private
-  State

Project Location
 Golden Valley
 230kV Transmission
 Line Project

UNS Electric Inc.

