

PROJECT INFORMATION

This is the second Fact Sheet provided on the Golden Valley 230kV Transmission Line Project. Approximately 500 Fact Sheets were circulated in October 2007 to area landowners, agencies, organizations, business owners, and residents. The first Fact Sheet provided a description of the project and announced a public meeting to identify public concerns prior to initiating siting activities. This Fact Sheet provides an update on the process for selecting a new transmission line alignment, announces the remaining alternative routes, describes the next steps in the approval process, provides a status report on the permitting process, and announces a public meeting where people will have an opportunity to meet with the project team, review the project, and provide comments.

WHY THIS PROJECT IS NEEDED

The primary purpose of this project is to address the immediate electric needs at Mineral Park Mine including the operation of its mill. Active milling operations at the mine have created additional jobs in the area and more jobs are expected once the milling operations are underway. Additionally, a new transmission line would enhance the electrical infrastructure to serve the developing Golden Valley area.

SITING STUDY AND ENVIRONMENTAL ANALYSIS

The siting study determines where the transmission line can and should be placed. Route selection includes consideration of potential issues with transmission line operations, as well as potential affects of the route on the environment, current and anticipated land uses, and how the line will look on the landscape. During the initial public meeting, local landowners and other members of the public expressed a preference to locate the line, to the extent possible, on Bureau of Land Management (BLM) managed land and to use areas that already have existing lines. The BLM eliminated some areas from consideration across the Cerbat Foothills and urged the use of existing corridors.

After review of potential environmental impacts and issues expressed by the public, the planning team has identified two routes for consideration. Both routes utilize BLM land on the east side of Golden Valley and along Route 93 where an existing line would be rebuilt to allow for the new 230kV circuit. The routes diverge at the intersection of Tooman Road and Collins Drive, and include an eastern route (Alternative A) and a western route (Alternative B), both of which rejoin to a single route on BLM land north of Golden Valley. A map of the alternative routes is included in this newsletter.

The approval of this transmission line involves two different regulatory processes. The first process is performed by the BLM and involves the completion of an environmental review as part of compliance with the National Environmental Policy Act. This process is underway and a preliminary Environmental Assessment (EA) is being reviewed by the BLM. The EA examines potential impacts to the environment and current, as well as anticipated, use of land in the project area. The BLM's review will result in a decision about whether or not to authorize the right-of-way across BLM lands. That decision may include conditions for approval (e.g., avoiding plants and animals during construction, re-seeding disturbed areas, etc.).

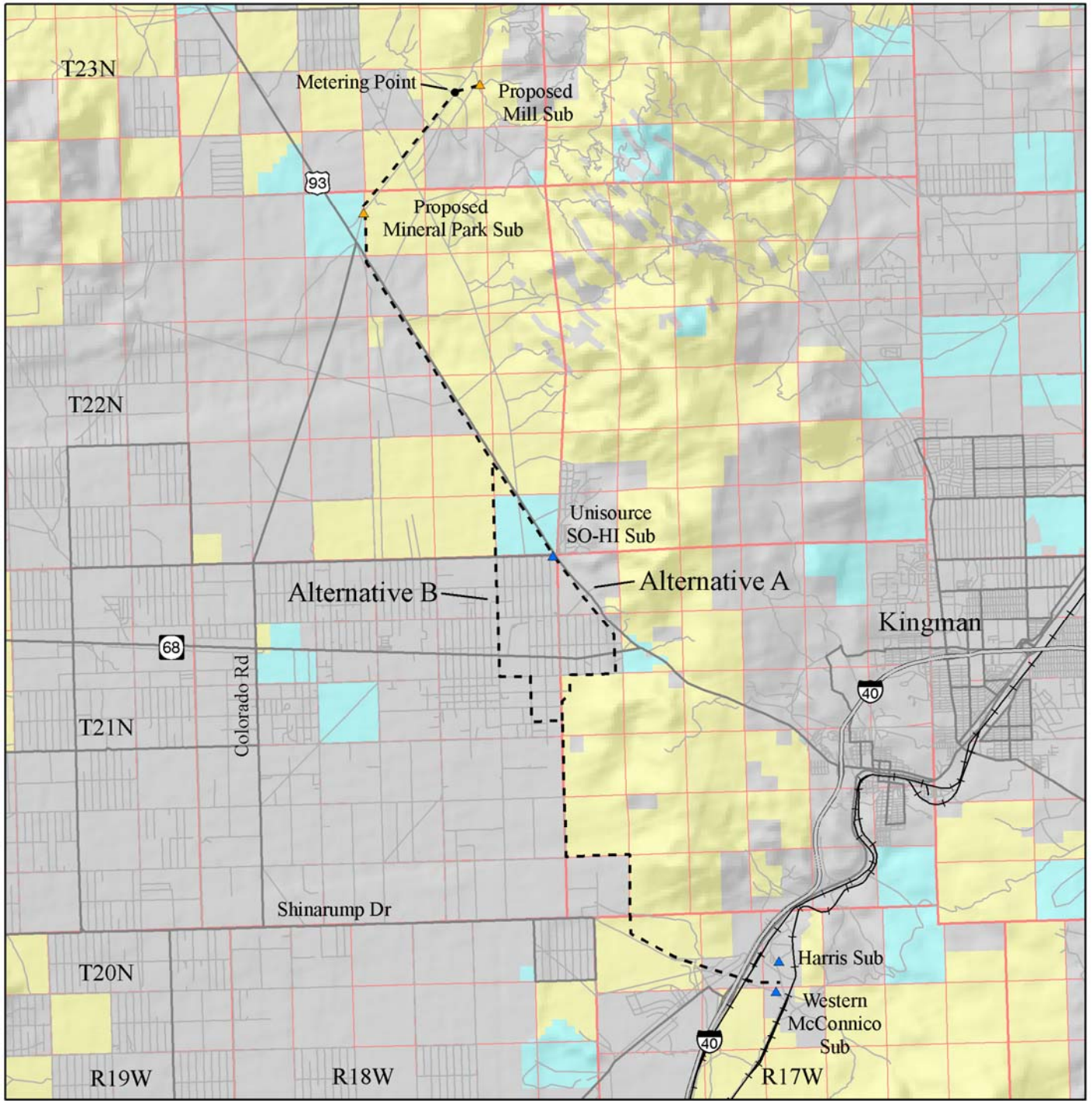
The second approval is performed by the Arizona Corporation Commission (ACC) and the Arizona Power Plant and Transmission Line Siting Committee (Committee). The Committee evaluates the application for the project, including the purpose and need for the project and to what extent the proposed transmission line is compatible with existing land use and the environment. This analysis incorporates information from the EA as well as other agency documents. If the Committee decides the project should proceed, it is sent to the ACC for final approval. The application to the ACC is being prepared, but it has not yet been submitted.

PROJECT TIMELINES

Contact with the public and agencies will continue. These contacts will assist in defining the final route submitted to the ACC. The application to the ACC is expected to be submitted in early 2008. If approved, construction would begin in the last half of 2008.

GETTING INVOLVED OR MAKING COMMENTS

A public open house is scheduled for February 12, 2008. It will be held at Black Mountain Elementary and Golden Valley Middle Schools, 3404 N. Santa Maria Road, Golden Valley, Arizona 86413, between 6:30 p.m. and 8:00 p.m. Your comments regarding this project are welcome. Comments will assist UniSource and the involved agencies in making sound choices for the project. You may address written comments to Transcon Environmental, 3740 E. Southern Ave., Suite 218, Mesa, AZ 85206 or you may make written or verbal comments during the public open house. If you have questions regarding the proposed project, please call the Project Information Phone Line at (928) 415-0213 or toll-free at (866) 453-2401.



Legend

- Project Alternatives
- ▲ Existing Substation
- ▲ Proposed Substation
- Bureau of Land Management
- Private
- State

Project Study Area
 Golden Valley
 230kV Transmission
 Line Project
 UNS Electric Inc.

