

---

## **GOLDEN VALLEY 230kV TRANSMISSION LINE PROJECT**

### **PROJECT INFORMATION**

UNSE Electric, Inc. (UNSE) is a subsidiary of UniSource Energy Services and delivers electric service to more than 90,000 customers in northern Arizona. In order to meet increased electrical demands and growth, UNSE plans to construct a new electrical transmission line in the Golden Valley area near Kingman. The project involves the construction of a 230 kilovolt (kV) transmission line and two substations to serve the existing and planned electrical loads within Golden Valley and the Mineral Park Mine. The primary and initial electrical need is at the Mineral Park Mine, which is located approximately 20 miles northwest of Kingman along the east side of US Route 93 (US 93) on the western slope of the Cerbat Mountains.

The proposed substations and transmission line alignments are located on lands under the jurisdiction of the Bureau of Land Management, the State of Arizona, and on private land. A map on the reverse side of this page depicts areas currently under review for possible transmission line alignments. The new line would originate at an existing substation located near the McConnico facility in Kingman, extend along the east side of Golden Valley, and end at the Mineral Park Mine.

### **NEED FOR THE PROJECT**

An increase in current and projected future electrical service needs in the area is resulting in the need for a new transmission line and substations. The immediate need is driven by the planned operations at the Mineral Park Mine, which include restoration of a mill at the mine that cannot operate effectively with the current electrical supply. Active milling operations at the mine are expected to create additional jobs in the area. Additionally, a new transmission line would enhance the electrical infrastructure to serve the developing Golden Valley area.

### **SITING STUDY**

A siting study is being conducted to locate these facilities where they would be most compatible with existing and proposed environmental conditions. The study area is illustrated on the map on the reverse side of this page. The siting study incorporates the identification and evaluation of alternatives with public coordination.

### **ENVIRONMENTAL ANALYSIS**

UNSE is required to conduct environmental studies and obtain the necessary permits for the proposed project. The project would cross Federal public land managed by the Bureau of Land Management, therefore, compliance with the National Environmental Policy Act and other relevant regulations must be satisfied. In addition, because the project involves a transmission line greater than 115,000 volts (115kV), it requires approval by the Arizona Corporation Commission. The Arizona Power Plant and Transmission Line Siting Committee would first review this project for environmental compatibility through their Certificate of Environmental Compatibility (CEC) process. Transcon Environmental, an Arizona-based environmental consulting firm, is assisting UNSE with siting and environmental compliance activities.

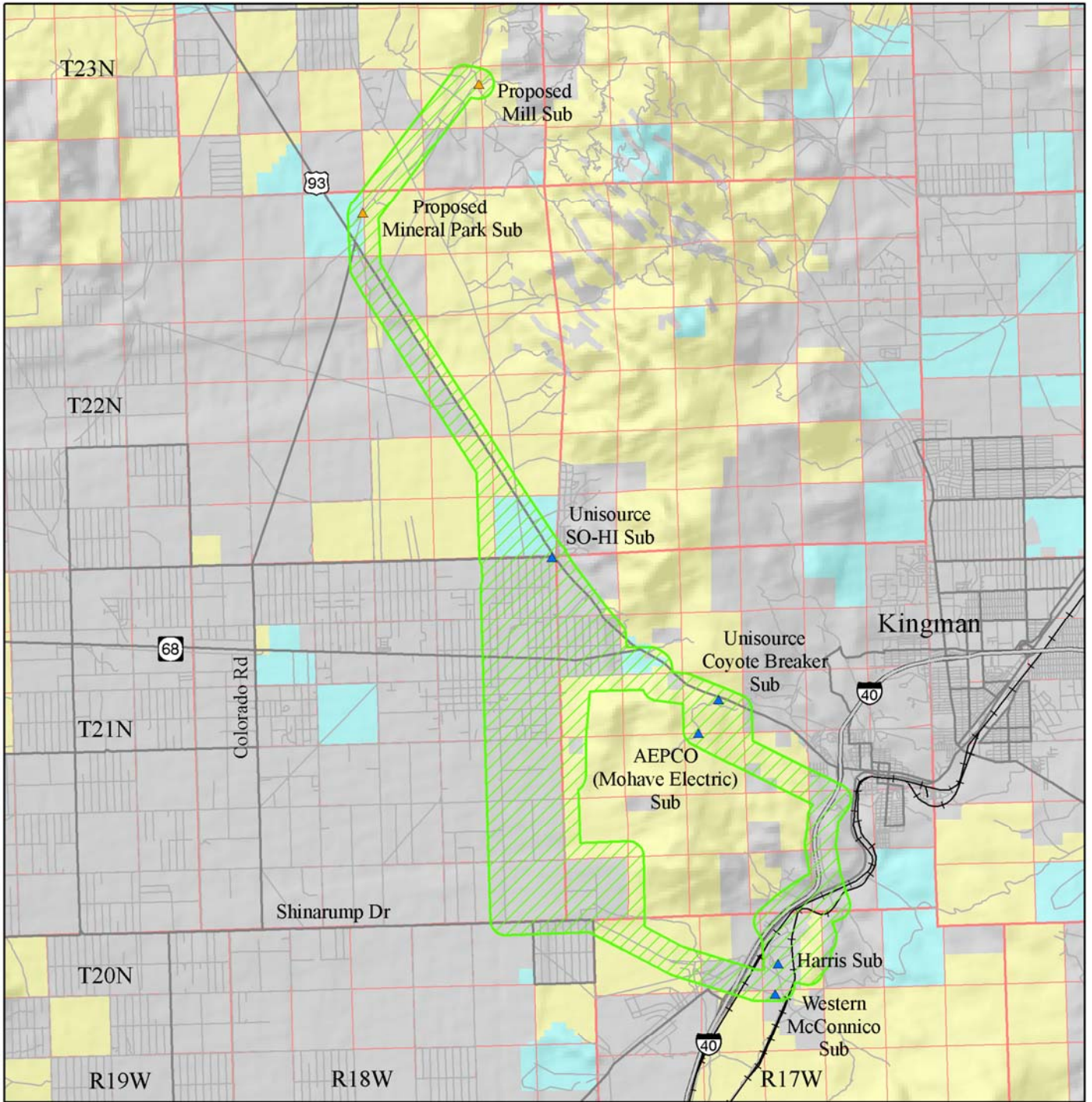
### **PROJECT TIMELINES**

Contact with the public and interested agencies begins this month (August 2007), and environmental studies will take place through the summer and fall of 2007. The CEC process should be underway in late 2007. Construction of the project is anticipated to begin in 2008.






### **GETTING INVOLVED OR MAKING COMMENTS**

A public open house is scheduled for August 16, 2007. It will be held at Black Mountain Elementary and Golden Valley Middle Schools, 3404 N. Santa Maria Road, Golden Valley, Arizona 86413, between 6:30 p.m. and 8:00 p.m.

Your comments regarding this project are welcome. Comments will assist UNSE and the involved agencies in making sound choices for the project. You may address written comments to Transcon Environmental, 3740 E. Southern Ave., Suite 218, Mesa, AZ 85206 or you may make written or verbal comments during the public open house. If you have questions regarding the proposed project, please call the Project Information Phone Line at (928) 415-0213 or toll-free at (866) 453-2401.



**Legend**

-  Siting Area
-  Existing Substation
-  Proposed Substation
-  Bureau of Land Management
-  Private
-  State

**Project Location**  
**Golden Valley**  
**230kV Transmission**  
**Line Project**

